



iVMS-4200 Client Software

Quick Start Guide

V1.02

Contents

1	Description	2
1.1	Running Environment	2
1.2	Surveillance System Architecture with an Performance of iVMS-4200	3
2	Starting iVMS-4200	5
2.1	Installing the Software	5
2.2	Uninstalling the Software.....	8
2.3	User Registration.....	8
2.4	Wizard for Importing Device	9
2.5	User Login.....	15
3	Control Panel and Main Menu Bar Introduction	16
4	Live View.....	19

1 Description

iVMS-4200 is a video management software using a distributed structure to manage all the connectable devices. It can manage the NVR, DVR, IP cameras, compression card and decoders. With different management and configuration modules and a reasonable collocation, it provides many solutions for different surveillance scenario, medium or small scale. It is a steady and reliable system with functions like real-time monitoring, video recording and searching, file backup, TV wall displaying, etc.

This user manual describes the function, configuration and operation steps of iVMS-4200 software. To ensure the properness and stability of the software, please refer to the contents below and read the manual carefully before installation and operation. This user manual can be acquired from your supplier.

1.1 Running Environment

Operating system: Microsoft Windows 7/Windows 2008 (32/64 bit operating system), Windows 2003/2000/Windows XP(32 bit operating system)

CPU: Intel Pentium IV 3.0 GHz or above

Memory: 1G or above

Display: 1024*768 or above



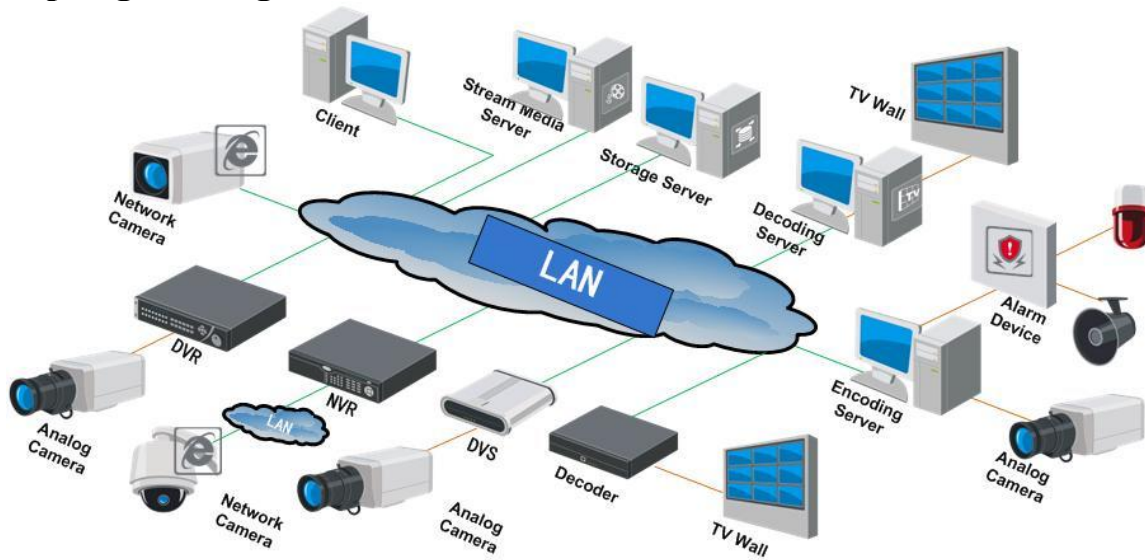
Note:

To simultaneously live view for many channels, or for the channel with high resolution, the higher hardware configuration is needed.

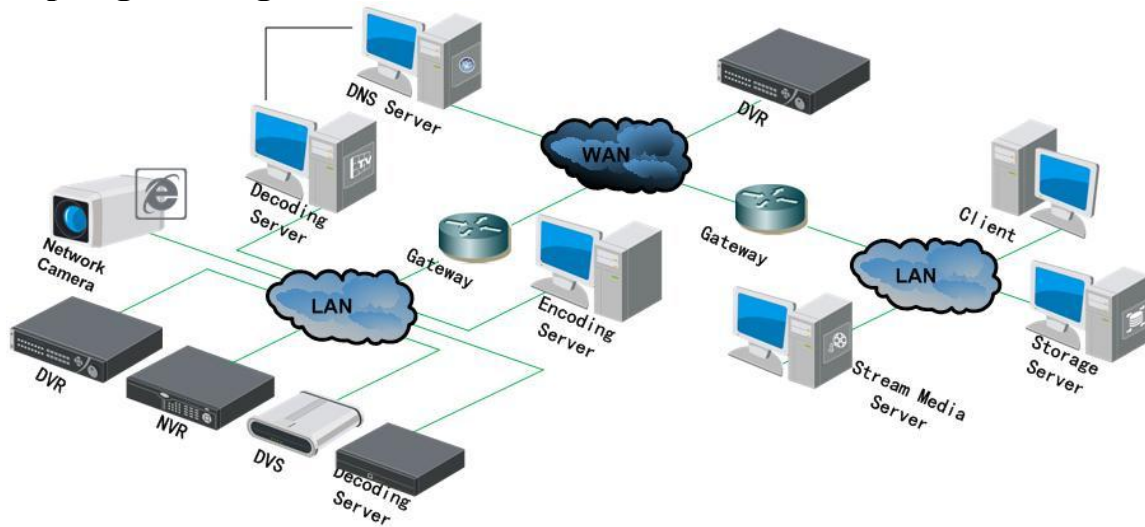
The software does not support 64 bit operating system; the above mentioned 64 bit operating system refers to the system which supports 32 bit operating system as well.

1.2 Surveillance System Architecture with an Performance of iVMS-4200

Topological Diagram of LAN Connection:



Topological Diagram of WAN Connection:



1.3 Feature Description:

- Up to 256 devices and 1024 channels can be added.
- Up to 256 camera groups can be added, and for each group 64 cameras can be added.
- A camera can be added to different groups.
- Up to 64 decoding devices can be added.
- 64 division screen layout and 64 channels simultaneous live view.
- 16 channels simultaneous playback and 4 channels synchronized playback.
- Up to 16 stream media servers can be added, the maximum channels forwarded by the stream media can be 200 channels (2M).
- 16 storage servers can be added.

User Friendly Operation:

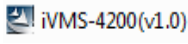
- Logical menu hierarchy;
- Movable tab sequence;
- Live view in multi-screen;
- Easy drag and draw channels selecting;
- Wizard for guiding basic operation;

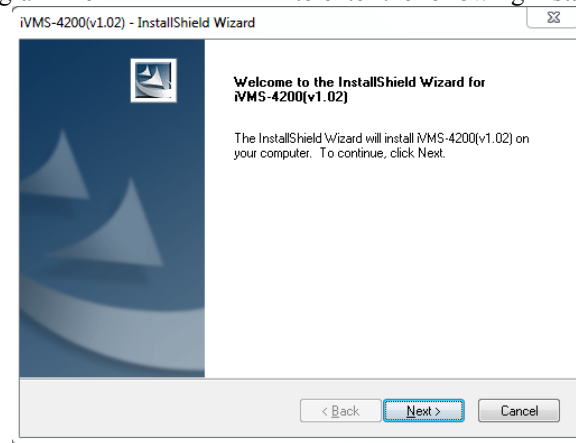
2 Starting iVMS-4200

2.1 Installing the Software

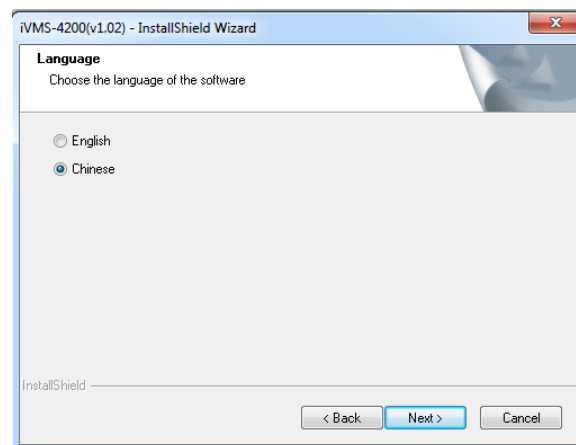
Follow the installation prompts to install the software.

Steps:

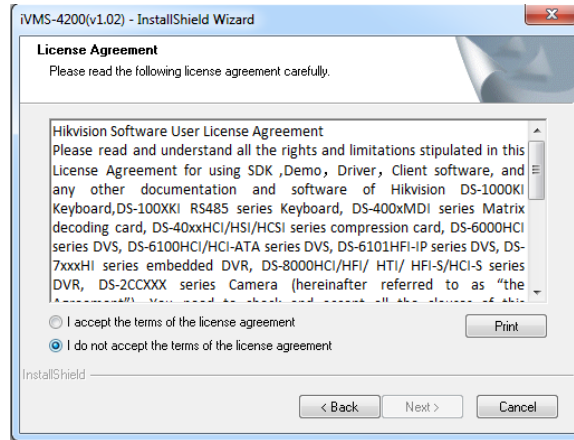
1. Double click the program file  to enter the following InstallShield Wizard.



2. Click “Next” to start the InstallShield Wizard. Select the language (English) for installation, and then click “Next” to continue.



3. In the License Agreement dialog box, check the checkbox with “I accept the terms of the license agreement”.



4. Choose the application you need in the next interface.

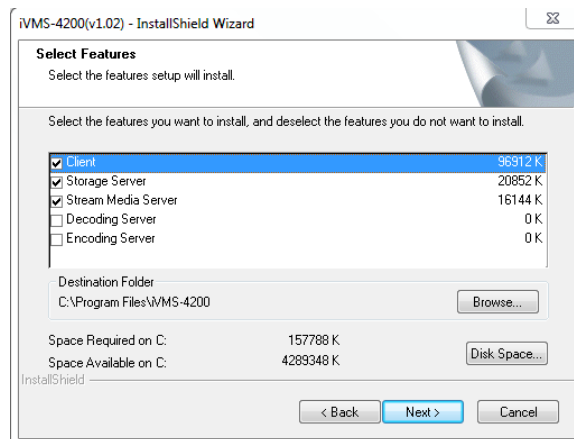
User Client is the application of the iVMS-4200.

PC NVR server is the same with the storage server; if you want to use the PC as a NVR, you can install this application.

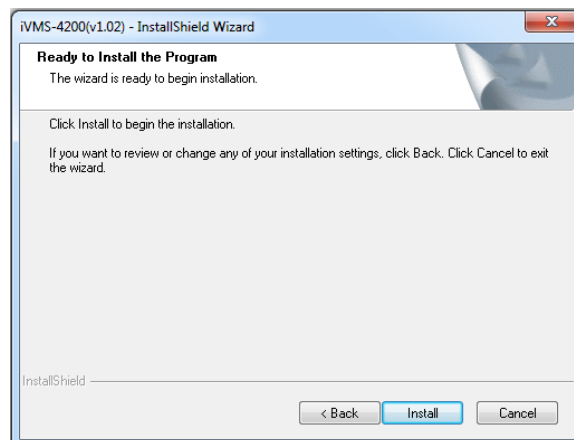
Stream media server is for forwarding the video stream and lowering the resource consumption.

Decoding Server enables you to decoding the video source and displays them on the TV wall.

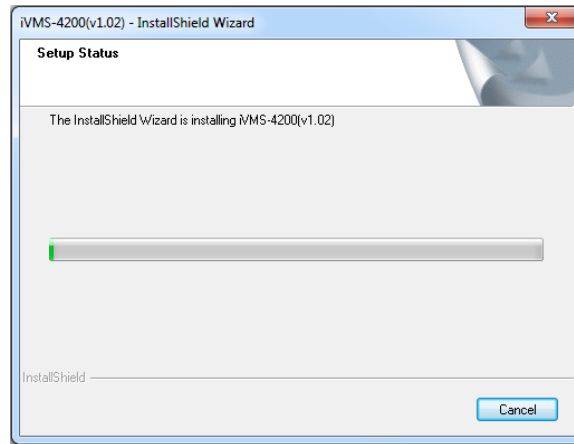
Encoding Server can be run as an encoding device. Decoder server and encoder server are alternative.



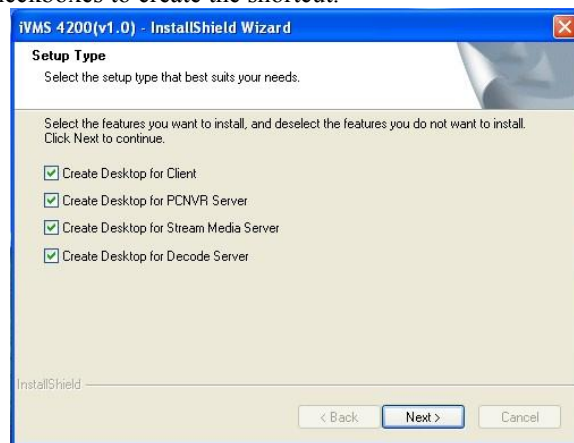
5. Click Next button to enter the following interface.



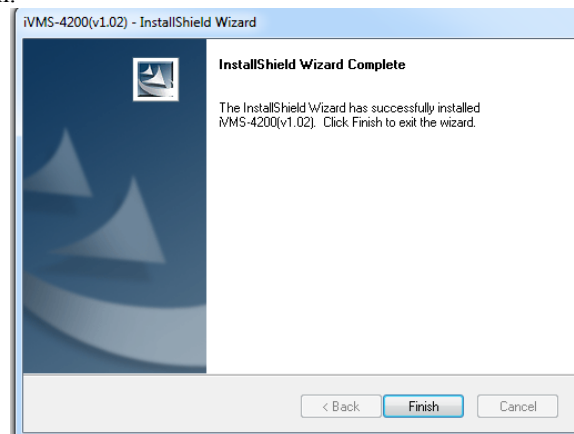
6. Click Install button to install the software.



7. You can check the checkboxes to create the shortcut.




8. Click the **Next** button.

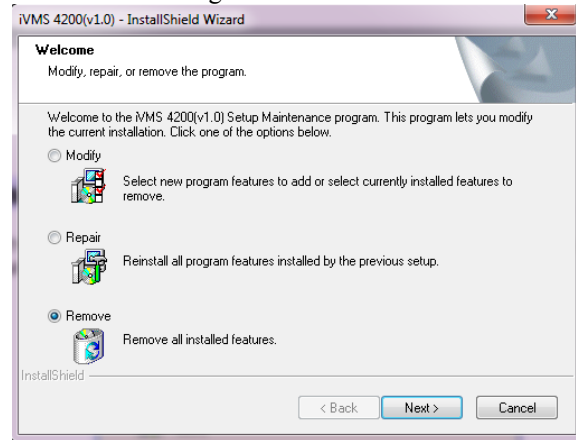


9. Click **Finish** button to finish the installation.

2.2 Uninstalling the Software

1. Click Start→All Programs→4200 client and select “Uninstall iVMS-4200” option.

 Uninstall iVMS-4200 to enter the following interface:



2. Select “Remove” to remove all the installed features and then click “Next” to uninstall iVMS-4200 according to the prompt.

2.3 User Registration

For the first time to use the iVMS-4200 software, you need to register a super user for login.

Enter the super user name, password and confirm the password in the dialog box and click **Register**. Then, you can log in as the super user.

Note:

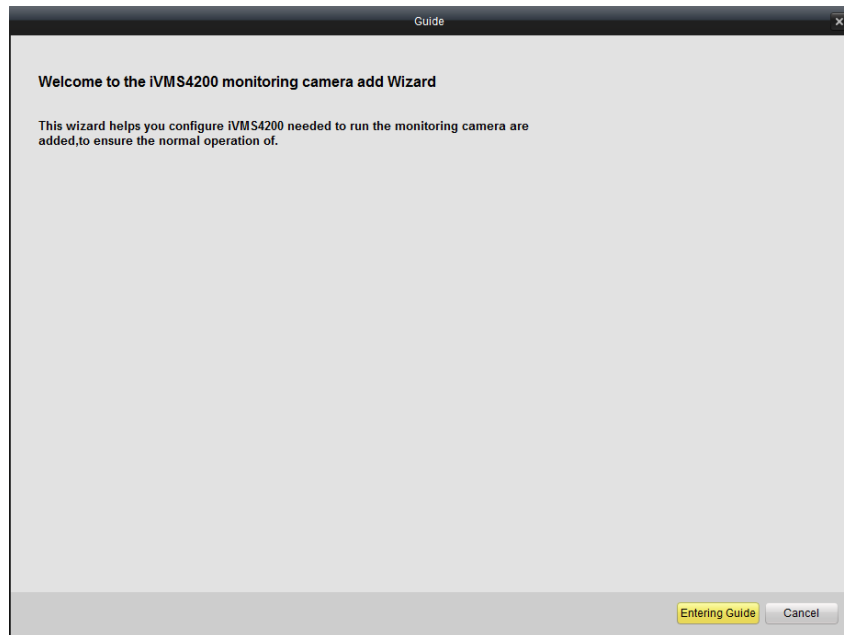
Enter, Space, and TAB keys are invalid for the user name and password. The password cannot be empty, and it should not be less than six characters and can't be copied and pasted.

2.4 Wizard for Importing Device

Purpose:

The main function of the iVMS-4200 is to manage devices remotely. Thus the task on the top hierarchy is to add the device to the management list. All the devices managed by the iVMS-4200 must be connected to the IP network.

For the first time user, the wizard message box pops up to ask you whether you want to be guided for the basic operation of the client software.

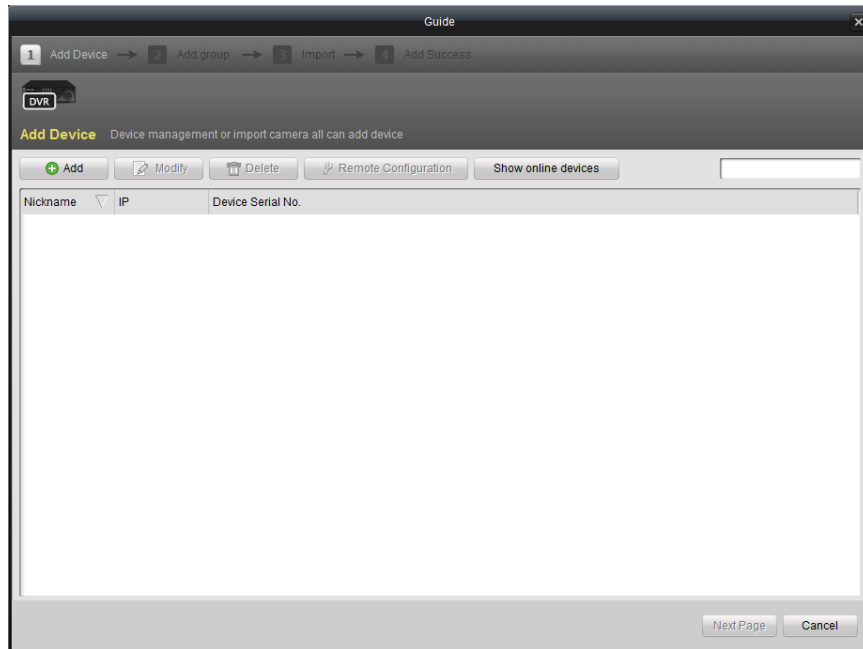


If this is not the first time you use the client software, the wizard doesn't pop up, and you can also use the wizard, click Help and Open Wizard.

Click **Entering Guide** to start the wizard, or click **Cancel** to exit the wizard.

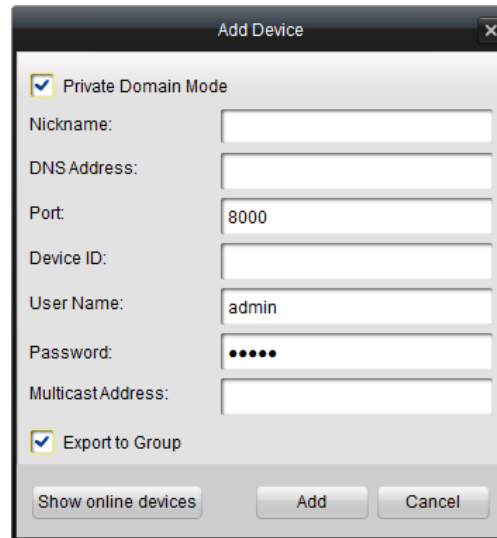
Steps:

1. According to the hint, click **Add** icon to add devices to the management list of the software.



2. Create a nickname for the device, enter the IP address and the port number of the remote device, enter the user name, and the password of the device.
3. Click Add icon to add the device.

If you add the device with a domain name, you can check the Private Domain Mode checkbox. And create a nickname, enter the domain name and port number, and enter the admin name and password of the device to add the device.



Add Device

☒ Private Domain Mode

Nickname:

DNS Address:

Port:

Device ID:

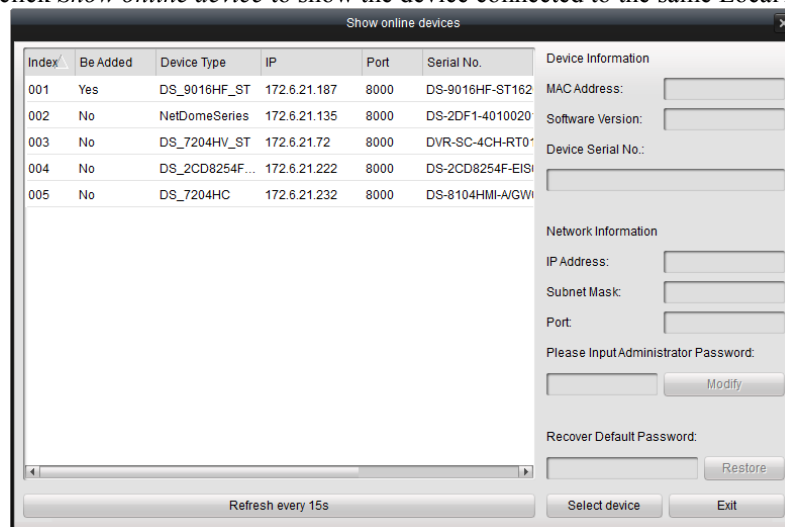
User Name:

Password:

MulticastAddress:

☒ Export to Group

You can also click *Show online device* to show the device connected to the same Local Area Network.



Show online devices

Index	Be Added	Device Type	IP	Port	Serial No.
001	Yes	DS_9016HF_ST	172.6.21.187	8000	DS-9016HF-ST162
002	No	NetDomeSeries	172.6.21.135	8000	DS-2DF1-4010020
003	No	DS_7204HV_ST	172.6.21.72	8000	DVR-SC-4CH-RT0
004	No	DS_2CD8254F...	172.6.21.222	8000	DS-2CD8254F-EIS
005	No	DS_7204HC	172.6.21.232	8000	DS-8104HMI-A/GW

Device Information

MAC Address:

Software Version:

Device Serial No.:

Network Information

IP Address:

Subnet Mask:

Port:

Please Input Administrator Password:

Recover Default Password:

Steps:

- 1) Select the device in the device list, and the information of the device such as the MAC address the software version and the serial number is shown in the left part. The information in this part can't be modified.
- 2) In the Network information area, you can modify the IP address the Subnet Mask and the Port number with entering the admin password of the device.
- 3) You can also recover the default password for the device, with the code provided by the authorized engineers.

The 'Show online devices' window displays a table of online devices. The sidebar on the right shows details for the selected device, DS-2CD8254F-EIS0120111124CCRR...

Device Type	IP	Port	Serial No.
DS_2CD8254F...	172.6.21.222	8000	DS-2CD8254F-EIS0120111124CCRR...
NetDomeSeries	172.6.21.135	8000	DS-2DF1-4010020110816BCWR1234...
DS_7204HC	172.6.21.232	8000	DS-8104HMI-A/GW0120111030BCWR...
DS_9016HF_ST	172.6.21.187	8000	DS-9016HF-ST1620111021BBRR403...
DS_7204HV_ST	172.6.21.72	8000	DVR-SC-4CH-RT0120111104AAWR00...

Device Information

MAC Address: 00-40-48-71-cd-49

Software Version: V3.0build 111216

Device Serial No.: DS-2CD8254F-EIS0120111124CCRR405

Network Information

IP Address: 172.6.21.222

Subnet Mask: 255.255.255.0

Port: 8000

Please Input Administrator Password:

Recover Default Password:

Refresh every 15s

4. Camera Group Adding

When adding a device, you can check the Export to group checkbox to export the device you added to certain management group. By default, the name of the group is the same with the name of the device you just added.

The 'Add Device' window contains the following fields and controls:

☐ Private Domain Mode

Nickname:

Address:

Port: 8000

User Name:

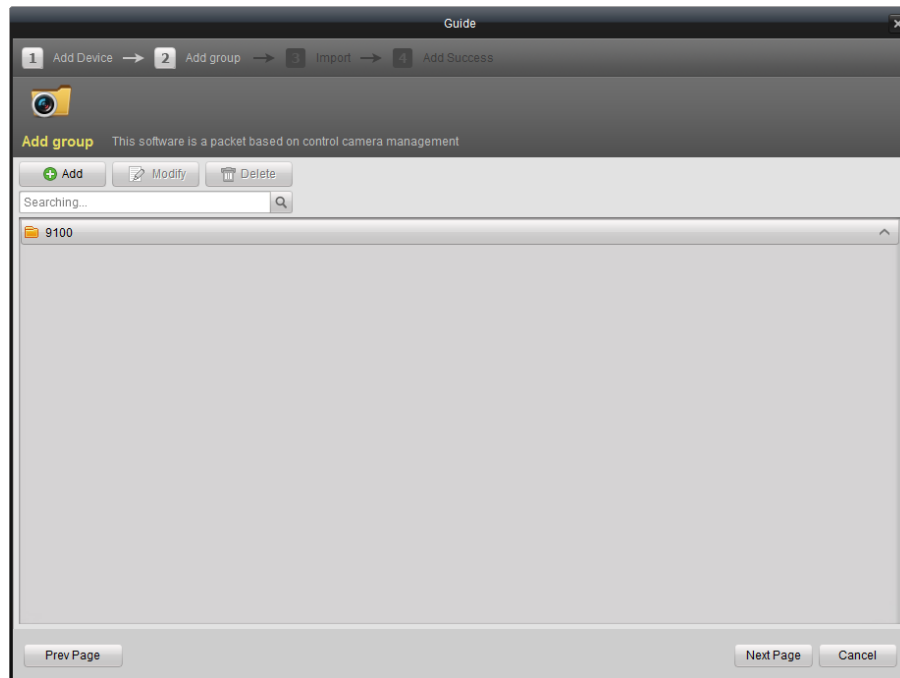
Password:

Multicast Address:

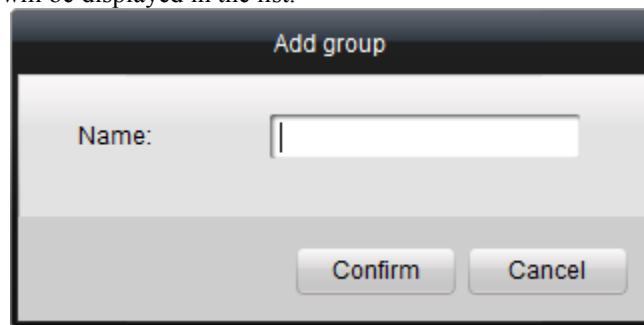
☒ Export to Group

If you don't want to add the group in this way due to the default name issue. You can click Next page, to enter the adding group interface.

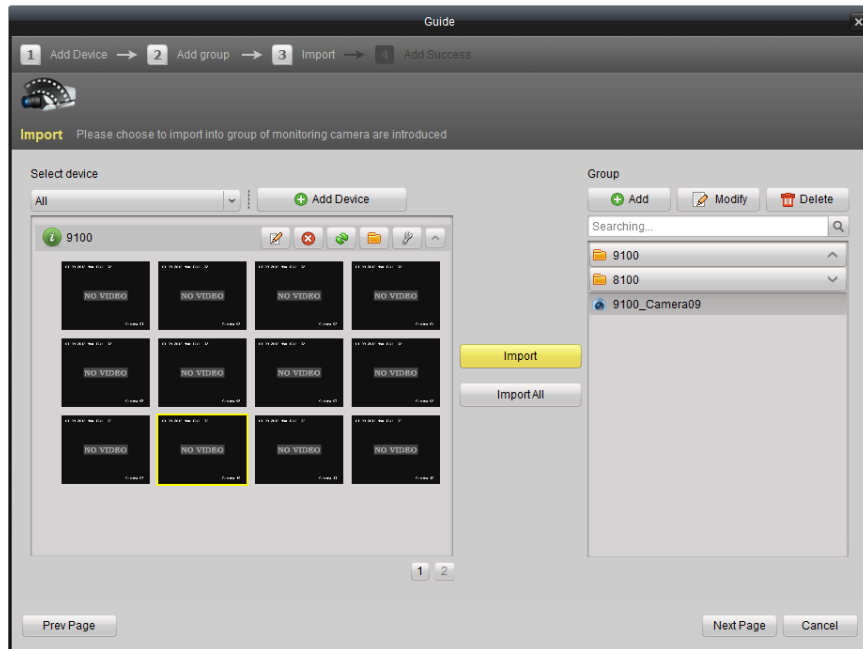
Click **Save** to add a new user. Click **Modify** to change the settings for the new user.



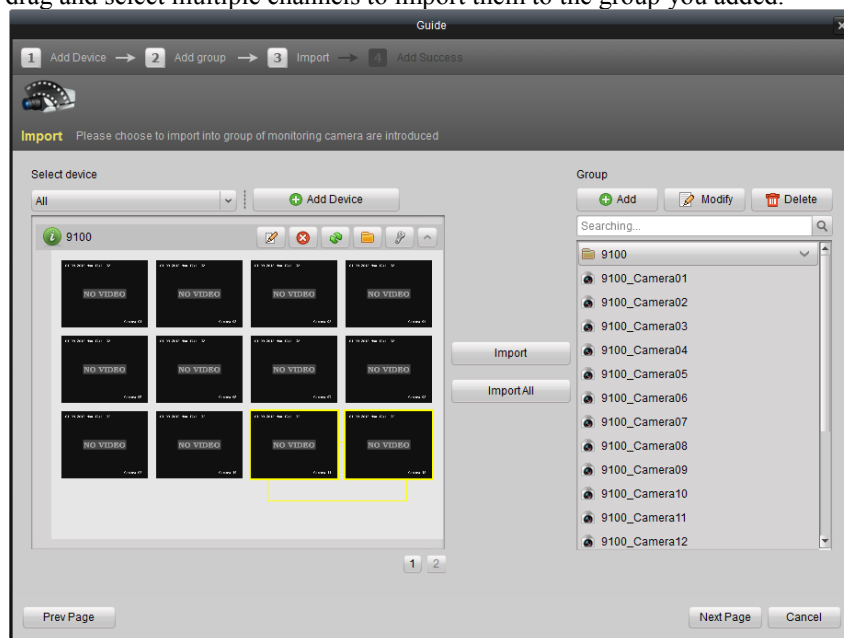
5. Click the **Add** on Group dialog box. Edit the name of group and then click **OK** to save your settings. The added group will be displayed in the list.



6. **Import Channels to Group**
In the left area on the Camera Import interface, click to select the channels and then click **Import** button to import the selected channels to the Group on the right.



7. You can drag and select multiple channels to import them to the group you added.



Note:

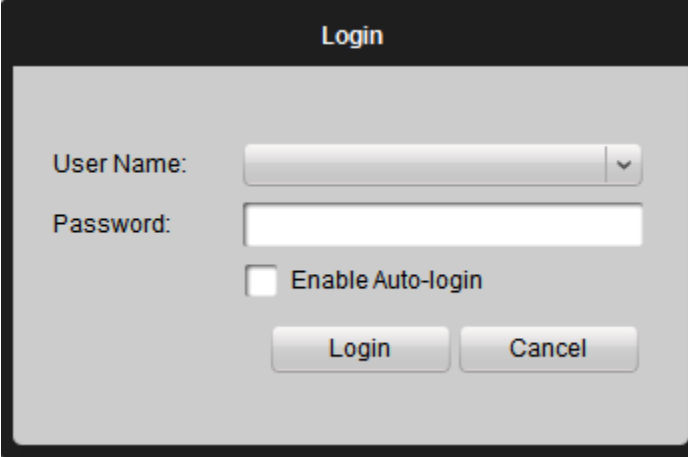
The devices to be added must be online currently.

Each channel can be added to one group only once, while the one channel can be added to different groups. Up to 256 groups can be added, and 64 channels can be added to each group, with a maximum of 1024 channels for all the groups totally.

After importing the selected channels to the group, you can return to the control panel and then enter the Main View interface to get a live view of the added channels.

2.5 User Login

When you open the iVMS-4200 software after registration, the login dialog box pops up, shown in the following figure:

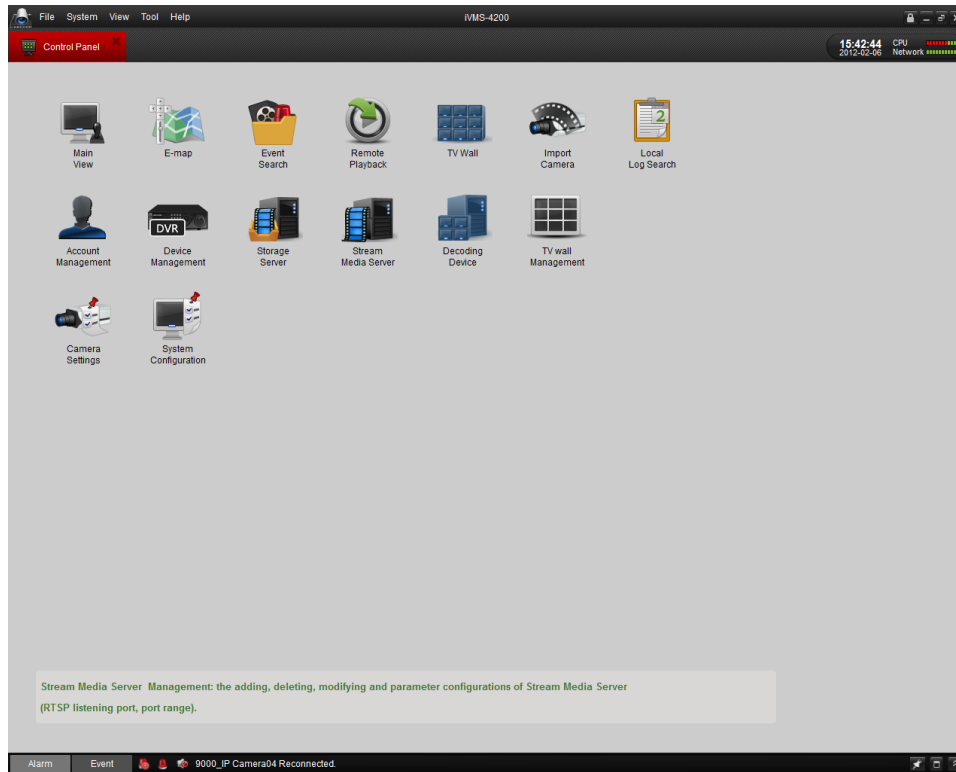


The image shows a 'Login' dialog box with a dark title bar. Inside, there are two labels: 'User Name:' and 'Password:'. The 'User Name:' label is next to a text input field with a dropdown arrow on the right. The 'Password:' label is next to a standard text input field. Below these fields is a checkbox labeled 'Enable Auto-login'. At the bottom of the dialog are two buttons: 'Login' and 'Cancel'.


Input the user name and password, and then click **Login**. You can also enable the auto-login by checking the Enable Auto-login checkbox, and then the user name and password is not needed for the login next time.

3 Control Panel and Main Menu Bar Introduction

The main control panel of the iVMS-4200 is shown in the following figure:



Menu Bar:

File	Open Captured Picture:	Enter the setting interface to browse the folder in the host PC of the exported captured picture file (s) and view the captured pictures.
	Open Video File:	Open the video player and browse the folder location of the exported video file (s), click  to browse the folder in the host PC of the record files. You can also capture pictures during the playing of the video file.
	Open Log File:	Enter the Log File interface to browse in the host PC of the folder location of the exported log file(s).
	Exit:	Exit the iVMS-4200 remote client.
System	Lock:	Lock the screen operation. You must log in after locking the system.
	Switch User:	Switch login user.
	System Configuration:	Enter the System Configuration interface.
	Import Configuration File:	Import client configuration file from your computer.
	Export Configuration	Export client configuration file to your computer.

	File:	
View	1024*768:	Display window at size of 1024*768.
	1280*1024:	Display window at size of 1280*1024.
	Full Screen:	Display window in full screen.
	Control Panel:	Enter Control Panel.
	Main View:	Enter <i>Main View</i> interface.
	E-map:	Enter <i>E-map</i> interface.
	Event Search:	Enter <i>Event Search</i> interface.
	TV Wall:	Enter <i>TV Wall</i> Setting interface.
Tools	Import Camera	Enter <i>Import Camera</i> interface.
	Camera Settings	Enter <i>Camera Setting</i> interface.
	Account Management	Enter <i>User Account Management</i> interface.
	Device Management	Enter <i>Device Management</i> interface.
	Storage Server Management	Enter <i>Storage Server Management</i> interface.
	Stream Media Server Management	Enter <i>Stream Media Server Management</i> interface.
	Decoding Device Management	Enter <i>Decoding Device Management</i> interface.
	Broadcast	Select device to start broadcasting.
Help	Open Wizard	Use the guide for camera import.
	About	View information of the client software, including company, software name, version, etc.
	User Manual (F1)	Click to open the User Manual; you can also open the User Manual by pressing FI on your keyboard.

There are 14 icons on the control panel, and their functions are described in the following table:

Operating Options	Main View	Viewing live and playback video; realize video operation (e.g., picture capture, recording, PTZ control, etc.).
	E-map	Managing and displaying E-Map and hot areas and spots; realize E-Map operation (e.g., operate map zoom in/out, view hot spot, display alarm, etc.)
	Event Search	Searching and playback of the event record files; realize playback operation.
	Remote Playback	Playback the recorded video and/or audio files in the remote client.
	TV Wall	Configuring the decoding of the channels and show them on the TV wall.
	Import Camera	Adding, modifying or removing the camera groups; import/export of cameras.
	Local Log Search	Searching, viewing and backup of local logs (alarm, operation, system logs).
	Account Management	Adding, modifying or removing the user account parameters; assign operating permission to each user.
	Device Management	Adding, modifying or removing the DVR device; configuring parameters (e.g., network, alarm

Management Options		input/output, HDD, etc.) for the added DVR.
	Storage Server Management	Adding, modifying or removing the storage server; configuring parameters (e.g., record schedule, network, HDD, etc.) for the added storage server.
	Stream Media Server	Adding, modifying or removing the stream media server; configuring parameters (e.g., RTSP port, upper/lower limit, etc.) for the added stream media server.
	Decoding Device	Adding, modifying or removing the decoder; configuring parameters (e.g., network, alarm input/output, exception, etc.) for the added decoder.
	TV Wall Management	Adding, modifying and deleting the TV wall.
Configuration Options	Camera Settings	Configuring camera parameters (e.g., image quality, record schedule, motion detection, etc.).
	System Configuration	Configuring the general parameters (e.g., saving path of files, alarm sound, Email, etc.).

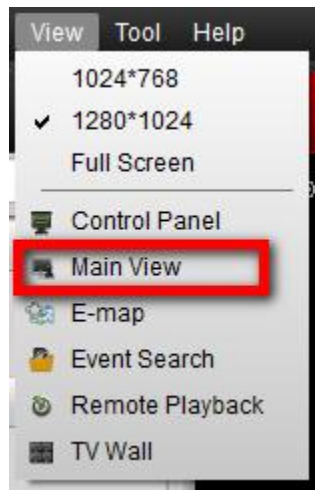
4 Live View

Before you start:

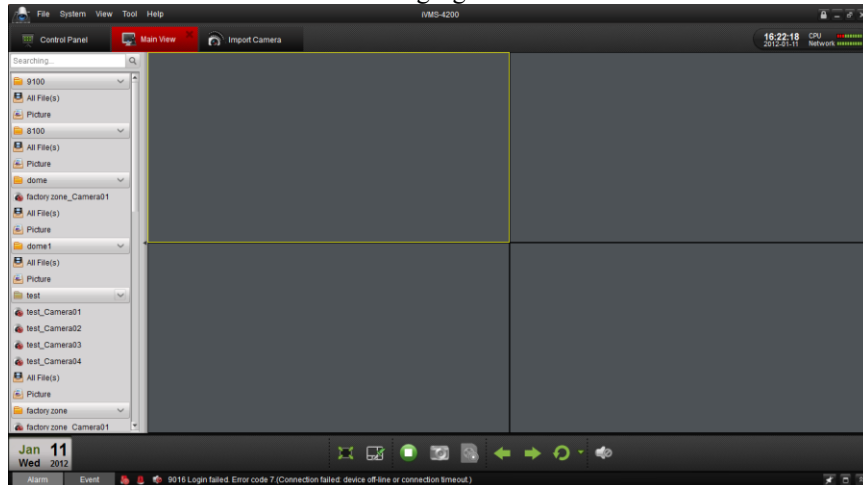
A camera group is required to be defined before live view. And the group name is shown on the list in the left bar.






Click the main view icon on the control panel, or click View -> Main View on the toolbar to enter the live view interface.



The main view interface is shown as in the following figure:











Camera Status:


Icon	Description
	Camera is online and works properly.
	Camera is offline.
	Camera is in live view.

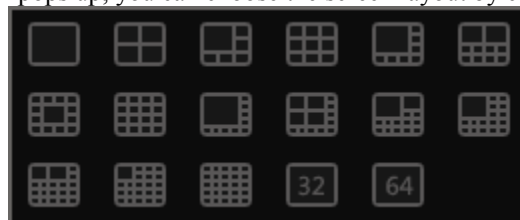
	Camera is in recording status.
---	--------------------------------

Main View Toolbar:



Button	Name	Description
	Layout	Select different layout mode.
	Full Screen	Display video in full screen mode, click again to restore.
	Stop All	Stop the display of all the cameras.
	Manual Record	Start manual record for the selected channel, click again to stop.
	Previous and Next	Click to view previous and next camera.
	Auto Switch	Start auto switching the screen by cameras or by groups.
	Volume	Adjust the volume for live audio.
	Live Audio	Enable/disable live audio.

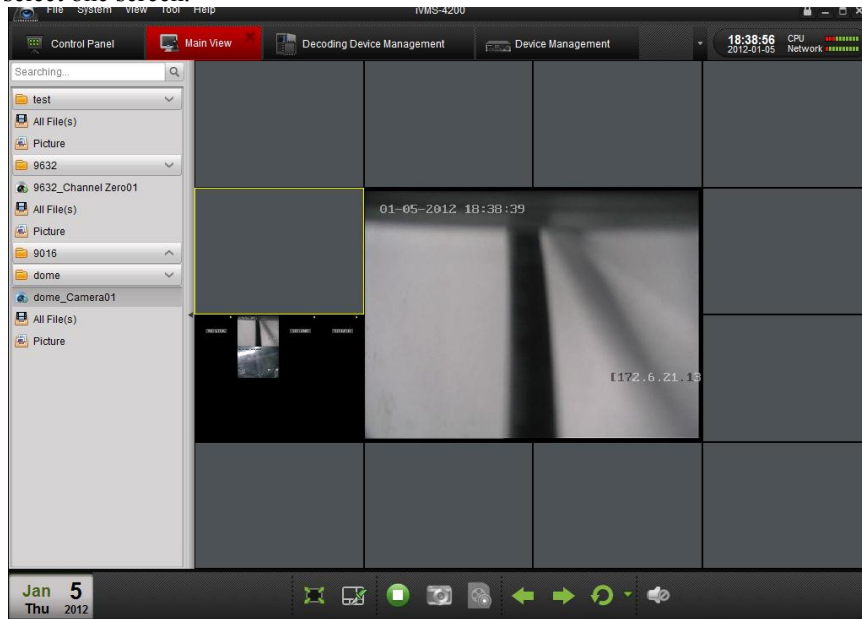
Click  the following box pops up, you can choose the screen layout by clicking certain icon.



Operations in Live View

Start live view for one channel:

To view the live video, drag the camera from the list to the display window, or double click the camera name after you select one screen.



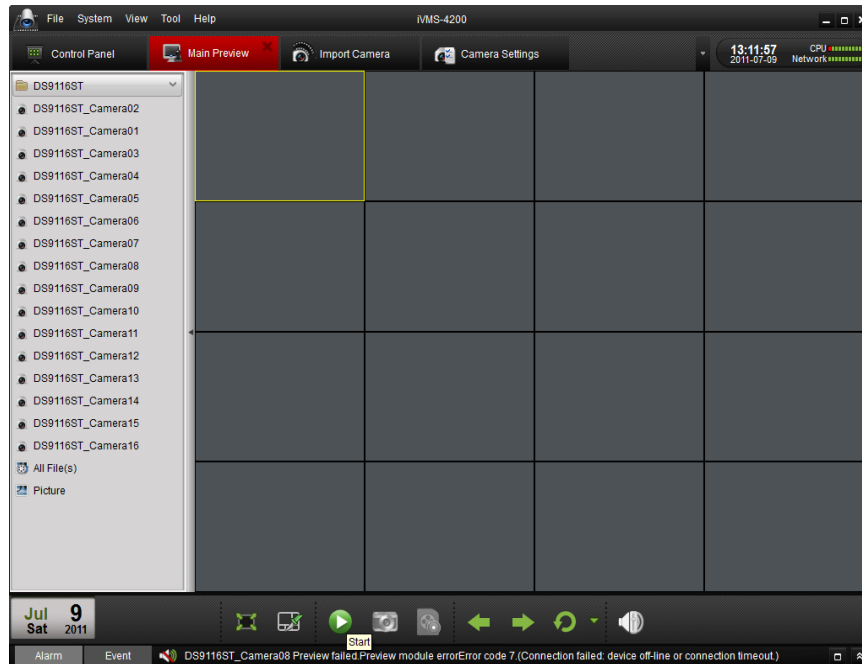
Start live view for camera group:

You can also get the live view for the whole group to display the live view of the cameras in the group in the screen.

Click on the group name, and then click the Play button at the bottom of the screen, see the following figure.

Or

Double click the group name.



Toolbar in each display window:



Button	Description
	Capture
	Start manual record, click it again to stop
	Start voice talk, click again to stop. This two-way audio can be used for only one camera at one time. When you enable the voice talk of one camera, then the voice talk for other camera is stopped.
	PTZ control, 8 direction icons will be displayed on the video.
	Check the camera status
	Go to the camera setting interface
	Stop live view
	Remote playback about 7 minutes record of current camera
	Audio button, click to open and close

Stop live view:

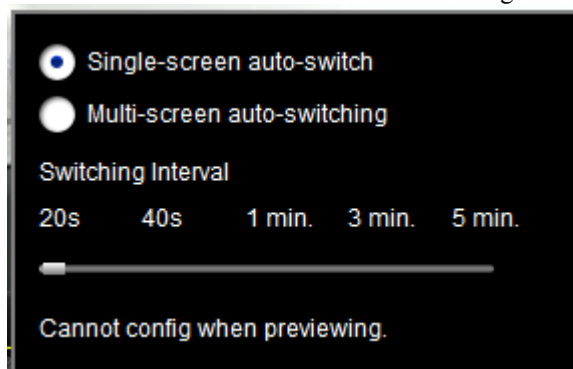
To stop the live view for one channel, you can click in the quick setting toolbar.

To stop the live view for all the channels, click on the bottom bar.

Cycle Live View:

Cycle live view mode includes the auto-switch in one screen or the auto-switch in multi-screen.

1. Click the next to the .
2. Choose the auto-switch mode and set the interval for the switching.

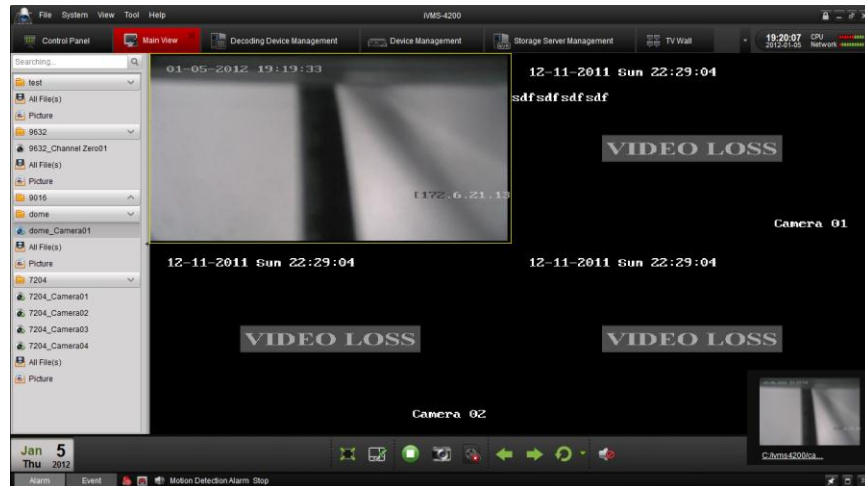


3. Click on the toolbar on the bottom to start the cycle live view.

Capture in Live View


Steps:

1. Select the screen.
2. Click icon on the bottom toolbar of Main View, or click icon in the tool bar of this display window.



A small window of the captured picture will be displayed to notify you whether the capture is done or not. If the capture is successful, there will be a link to the saving path of the pictures, and if not, there will be error messages accordingly.

To view the captured pictures:

- Click on the small window of the pictures showed on the right bottom after capture.
- Click the  icon on the left toolbar; all the pictures captured on the remote client are stored here.
- Click File button on the toolbar and select Open Captured File.

