

Technical bulletin



July, 2006

Honeywell Security & Custom Electronics

Galaxy G3 connections diagram RS-232 cable

Reference: TB0603A-EN-02
Concerning: Galaxy G3 connections diagram RS-232 cable
Date: July 27 2006

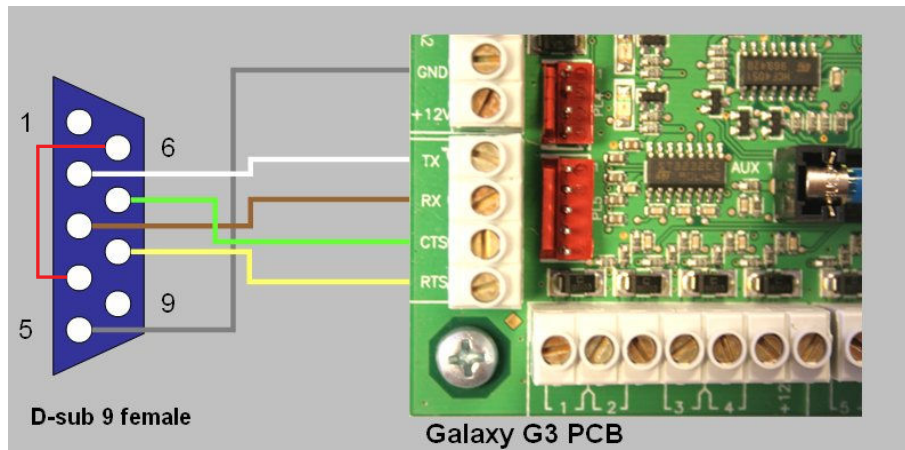
Dear customer,

The Remote Service Suite (RSS) foresees in the programming and diagnosis of the Galaxy G3 panels, by means of a laptop or PC.

For this purpose a direct RS-232 connection cable is needed. Below you will find the wiring diagram. The connection cable may not exceed 15 meters and should preferably be shielded.

When connecting with this cable you should use the on-board RS-232 interface of the G3 panel, the baud rate of both the panel as well as the settings in RSS need to be set equally to a maximum of 57.600 baud.

A Galaxy RS232 cable can also be ordered at your local distributor, the article number is A234.



Wiring diagram RS-232 connection cable (max. 15m)

Honeywell Security
Technical support team