



IC60 Sintony® 60 Intrusion Control Panel

for home and small businesses

- Multifunctional intrusion control panel for highest requirements
- Outstanding modern design
- Wired or/and wireless peripherals connectable
- Individually expandable
- 2 areas
- 8 - 16 wired or wireless inputs
- Up to 100 users
- Up to 16 remote controls with panic button
- 8 programmable telephone numbers at integrated dialer
- 8 programmable calendar functions
- 4 - 8 programmable outputs*
- Up to 7 external keypads or access card readers (125kHz proximity)*
- External GSM module for backup and SMS communication*
- Various different alarm verification methods
- Remote configuration and maintenance with PC
- Programmable locally with keypad, memory stick or by PC
- Room temperature indication

* Please refer to the Installer manual of the IC60 regarding detailed information about the max. configuration of the system and bus length.

Sintony® 60 compact



Different mounting directions are possible with the same housing

The **multifunctional comfort intrusion control panel** not only provides specific functions for the highest demands. It allows for additional security applications such as access control using card readers or GSM connection to transmit SMS through GPRS.

The **modular and individual design** can be adapted easily and individually for each customer requirements with a wide range of different colors and mounting possibilities. It will grow with increasing requirements – available wired or wireless.

Integrated PSTN dialer with 8 different numbers enables individual and automatic information. The system can differentiate between comfort functions and alarm events. It will inform different numbers in case of comfort functions (e.g. child return) or alarm events. For example it will inform the Central Monitoring Station (CMS) or police in case of alarm events. In case of medical alarms it will inform directly the doctor.

Various types of alarm verification help prevent false alarms caused by incorrect operation or detection, thereby avoiding stressful situations and costly intervention measures. Several events can be filtered before the alarm is signaling or the alarm transmission can either be delayed or confirmed. In addition to this, the audio module enables listening and speaking at events inside the building.

The **maintenance and monitoring software** can be used for configuration and maintenance of the Sintony control panel. The system can be accessed locally or remotely via standard telephone line. It can also be used for Central Monitoring Stations (CMS) or service provider to follow up the events (255 event memories), for secured remote operation and configurations for an optimum system data management.

The **16 inputs** and **8 outputs** can be programmed individually. This customization allows you to monitor and control a vast amount of points within a home or small trade wards, to activate system features and to receive signals caused by events.

SiWay™ radio system integrates all wireless components such as remote controls, glass break, motion and smoke detectors, input modules or door contacts into the panel. This encoded, unidirectional system saves you installation time and efforts when covering locations that are difficult to access.

Secured wireless transmission through a state-of-the-art frequency monitoring in combination with a dynamic battery checking by the detectors (these results are sent with every transmission), secures a steady connection between detectors and control panel. This gives enough time in advance to coordinate a battery change, if the battery gets low.

Control units

All Sintony 60 intrusion control panels are equipped with shapely, user-friendly keypads with plain text displays and operating support for internal and external activation and deactivation of security wards, quick system check and hidden triggering of robbery alarms. Illuminated keys and LCD display.



IC60 with integrated LCD keypad with large display and temperature indication (330x170x40mm)

The Sintony 60 compact is equipped with an extra large 2-line display, each consisting of 16 characters and keypad integrated. The shiny surface, the crystal clear buttons and the different colors fit every room and taste. The display and the keys are fitted with backlights and can be individually adjusted, as well as the volume of the signal tones. The 5 LED's display the most important system states such as ready, trouble, stay, bypass and armed. The design of the buttons is very user-friendly as it is based on the well-known telephone keypad. It clearly shows separate emergency call buttons. A room temperature indication is integrated.



IKP6-03 external LCD keypad with large display and temperature indication (145x126x22mm)

The keypad presents itself in an outstanding, very flat and modern design. The shiny surface and the crystal clear buttons fit every room and taste. The IKP6-03 is equipped with an extra large 2-line display, each consisting of 16 characters. The display and the keys are fitted with backlights and can be individually adjusted, as well as the volume of the signal tones. The 5 LED's display the most important system states such as on/off, ward "unset", "part set", "full set", alarm, etc. The design of the buttons is very user-friendly as it is based on the well-known telephone keypad. It clearly shows separate emergency call buttons. A room temperature indication is integrated.



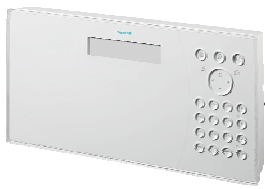
IAR6-30 contact less ID access card reader IP 54 (125Kkz) (121x45x21mm)

With its flat and small design this card reader smoothly fits to the stylish design line of the Sintony 60 products. It can be connected directly to the central bus and operates as a keypad (without programming). All existing standard tags/cards which operate within the 125 kHz system can be used and registered to the Sintony 60 on site or remotely (totally max. 100 users).



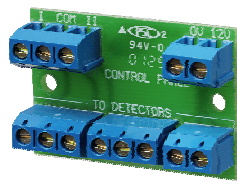
IRCW6 five channel remote control for Sintony 60, waterproof

The remote control with an elegant and stylish design simplifies the use of the security system; it can activate or deactivate the Sintony 60 without a code. Secured with an individual 24 Bit encrypted code transmission and a waterproof housing it is small enough to be used on a key ring. It is also available in different colors for easy identification and individual taste. With the integrated additional functions you can operate other devices such as lights, garage doors, etc. remotely. Furthermore, you can request police or medical help with the integrated panic button.



Central-Bus

Different plug-in modules and peripherals such as addressable modules for outputs, voice modules, card readers or external GSM modules are available for professional installation. The panel feeds, controls and monitors the modules via central-bus, which can be installed easily in any building.

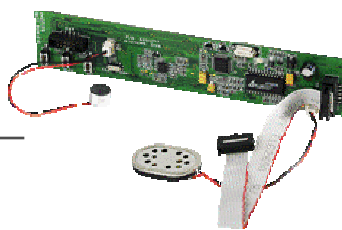


IZE6-04 four wired zone expander module

With this unit 4 additional wired zones can be connected to the Sintony 60 control panel. It can be built in the control panel directly (modular version only) or external to save cabling via a connection to the terminal block of the inputs. Maximum 2 modules can be used with one Sintony 60 (e.g. max 16 wired zones).

IRFW6 receiver module

If the receiver module is built into the control panel, it is able to operate 16 wireless devices of the Sintony 60 product range and up to 16 remote controls. The signal is transmitted in a secured frequency range (868 MHz in Europe, 915 MHz in the US) with encrypted information. In case a frequency blocking or jamming is detected an alarm signal will be indicated. To overcome transmission problems an additional receiver module can be mounted externally and connected to the central bus.



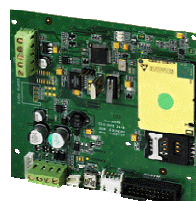
IAV6-90 two-way voice verification module (+90sec. Message)

The two-way voice verification module gives the control panel the ability to work as a communication point. It is possible to listen in from outside and verify real alarms as it is normally used by Central Monitoring Stations (CMS) to reduce the cost for false alarms. The "listen-in" function can only be activated from the outside with a security pin code or in case of an alarm. In case of a medical emergency the operator can directly talk to the person in need. It can also store 90 sec. of alarm message which can be individually programmed with the on board included microphone and loudspeaker.



IRO6-04 relay output module 4 12V/1A

With this unit 4 additional output relays can be connected to the Sintony 60 control panel. It can be mounted external to save cabling via a connection to the central bus (build in modular version only). Maximum 1 module can be used with one Sintony 60 (e.g. max. 8 programmable outputs).



IGS6 GSM module quad band

By adding a GSM module to the control panel, it turns into an independent alarm unit. The GSM can also work as a back up if the telephone line is cut or broken. Furthermore, the control panel will be able to send SMS messages to mobile devices to inform about the actual situation at home. The module can be also used for 2-way communication or for transmission of information over GPRS.

Accessories

The Sintony 60 is a multifunctional intrusion control system with a lot of options for easy mounting, programming and individual design. The latest news you will always find on the internet at: www.siemens.com/homesecurity. Please check for further information – especially the latest development in colors and styles, new coming modules, manuals and programming software.



IC60M-8 Sintony 60 in small modular housing 8-16 zones (290 x 250 x90 mm)

The Sintony 60 can also be delivered in a traditional modular design with a small box containing the power supply and the battery. This product is recommended for only wired installations where space for a bigger backup battery is needed.

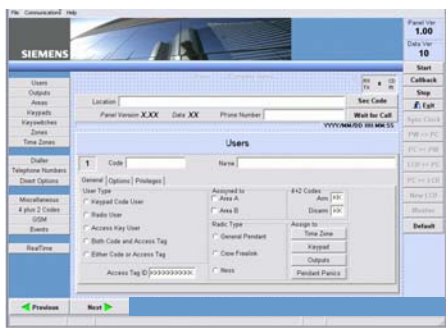
IVK-6 vertical mounting kit

This kit contains an additional front cover in the color white and an additional button keypad to be exchanged with the existing horizontal button keypad version. Only with these two parts the Sintony 60 compact can be changed to a vertical version. No additional material is needed.



IMM6-1 memory stick

With this tool it is very easy to program a Sintony 60 control panel. Special customer default settings can be easily up and downloaded into the control panel. With each memory stick one panel programming can be stored/ copied.



IAS6-1 CD with installer software and complete installations and user documentation

The CD contains the documentation as well as the programming and administration software for the Sintony 60 product platform. A PC and the programming cable IAQ6-1 enables software authorized user to get access to the panel remotely or locally.

IAQ6-1 PC interface cable USB

The connection cable enables direct connection between a PC and the Sintony 60 control panel for direct programming and print out of the memory log. The product consists of a standard mini USB cable together with the special Sintony 60 communication interface connector.

Overview system technology

	Sintony 60 Compact	Sintony 60 Modular
Inputs and outputs		
Inputs (programmable)	8 (16 zones by doubling)	8 (16 zones by doubling)
Outputs (programmable)	4 (+4 with IR06-04)	4 (+4 with IR06-04)
- Open collector 12V / 1A	2	3
- Relay 24V / 2A	1	1
- Internal Piezo output (No-1)	1	none
- Relay 24V/1A (IR06-04 x 1)	4	4
Bus connections- max. length*		
Up to 25 meter, 22AWG, wire diameter 0.6mm	7 Keypads IKP6-03 or Reader IAR6-30	8 Keypads IKP6-03 or Reader IAR6-30
Up to 100 meter, 20AWG, wire diameter 0.8mm	4 Keypads IKP6-03 or Reader IAR6-30	4 Keypads IKP6-03 or Reader IAR6-30
Power supplies		
Integrated power supply	1	1
External power supplies	no	no
Output load of the monitored power supplies (nominal voltage 12V)	0.8 A	1 A
Fused 12V outputs	3	3
Battery and network monitoring	yes	yes
Battery cut off to protect against battery damage	yes	yes
Functions		
Independent alarm wards	2	2
Physical input types (freely selectable for each input)	8 + tamper	8 + tamper
Event memory with time stamp and additional information	255	255
PINs for users / installer	100 / 1	100 / 1
Weekly calendar	8	8
Local PC connection (USB)	with cable IAQ6-1	with cable IAQ6-1
Remote maintenance and configuration	yes	yes
Plain text programming using control unit or PC	yes	yes
Sabotage monitoring	yes	yes
Installation of additional modules possible	yes	yes
Keypads		
LCD keypads	IKP6-03	IKP6-03
Activation without code	yes	yes
Plain text user support	yes	yes
Separate alarm/event buttons (fire/police/medical)	yes	yes
System control unit	yes	yes
Room temperature indication	yes	yes
Communication		
Analog PSTN dialing device	built in	built in
Digital ISDN dialing device	external filter necessary	external filter necessary
Voice alarm via telephone	IAV6-90	IAV6-90
System control via telephone	yes	yes
Multiple alarm protocol transfer	SIA,CID,Voice	SIA,CID,Voice
Backup telephone line GSM	IGS6-10	IGS6-10
Extensions		
4 zones Input module (max. 2/control panel)	IZE6-04	IZE6-04
4 relay Output module (max. 1/ control panel)	IR06-04	IR06-04
Audio and verification functions		
verification zone	1	
Call-back	yes	yes
2-way audio for alarm verification and intervention	IAV6-90	no
Remote help (audio support)	yes	no
Wireless		
SiWay™ wireless detectors (complete product range)	yes	yes
SiWay™ wireless input module	yes IMKW6	yes IMKW6
SiWay™ wireless remote controls	yes	yes
Additional external receiver (max. 2/control panel)	yes	yes
Dynamic battery checking	yes	yes
Indication of battery low in advance	yes all devices	yes all devices
Monitoring of frequency blocking	yes	yes
Detector monitoring adjustable	0-99 min	0-99 min
Unidirectional wireless system	yes	yes

* Please refer to the Installer manual of the IC60 regarding detailed information about the max. configuration of the system and bus length.

Technical specifications

Panel	IC60 Compact	IC60 Modular	IGS6-10 GSM Module n.y.a.
Power supply	100-240 VAC, 50/60 Hz	230 VAC +10%/-15%, 50 Hz	
Main fuse	T250 mA	T250 mA	
Power consumption	max. 120 mA	max. 160 mA	
Power supply output	12 VDC / 0.8A	12 VDC / 1 A	
Battery type (optional)	Ni-Mh12 VDC / max. 1800mAh	Sealed Lead Acid12 VDC / max. 7 Ah	
Inputs	8+1	8+1	
Outputs	1 x Relay 24 VDC / 2A 2 x OC 12 VDC / 1A	1 x Relay 24 VDC / 2A 3 x OC 12 VDC / 1A	
Frequency	868 MHz/915 MHz	868 MHz/915 MHz	
Operating temperature	0 ~ +50 °C	0 ~ +50 °C	
Housing material	ABS	ABS	

Control units/ Cards	IKP6-03 LCD Keypad	IAR6-30 ID Card reader	IRCW6 Remote control	IZE6-04 Zone expander
Power supply	9-16 VDC (via E-Bus)	11-16 VDC (via E-Bus)	build in / Battery	Connected to zone
Power consumption	min. 40 mA Typ. 70 mA max. 110 mA	Typ. 40 mA max. 50 mA		Resistor only/ no
Display	LCD 2 x 16 characters	2 LED's	1 LED	
Operating temperature (93% relative humidity)	-10 +50 °C	-10 +50 °C	-10 +50 °C	-10 +50 °C
Housing protection class	Environmental Class II	IP54	IP65 waterproof	No housing
Housing material	ABS	ABS	ABS	

Central Bus	IRFW6 Receiver Module	IRO6-04 Relay Output Module	IAV6-90 2 Way Voice Module n.y.a.
Power supply	7-15 VDC (via Central-Bus)	11-16 VDC (via Central-Bus)	
Power consumption	Typ. 22 mA	Standby 15 mA +20mA/ active Relay max. 100 mA	
Inputs	Clk,Dat,+/-, for Bus	Clk,Dat,+/-, for Bus	
Outputs		4x12V/1A	
Frequency	868.35 MHz/915 MHz		
Operating temperature (93% relative humidity)	-10 +50 °C	-10 +50 °C	
Bus connections	1-central bus connector	1-central bus connector	
Housing protection class	No housing	No housing	
Housing material	none	none	

Please refer to the Installer manual of the IC60 for further technical details.

Order information

		KIT PACKING WITH SINTONY 60
A5Q00013973	IPIC60-101	Kit IC60 modular housing, wired, ext. LCD Keypad, 3PIR IR80,no Battery
A5Q00013976	IPIC60-111	Kit IC60 compact panel, 3PIR IR80 wired, 1Remote Control, incl. Battery
A5Q00013979	IPIC60-121	Kit IC60 compact panel, wireless, 3PIR IR60, 1Remote Control, incl. Battery
A5Q00013981	IPIC60-123	Kit IC60 compact panel, wireless, 2PIR IR60, 1MK, 1 Remote Control , incl. Battery
A5Q00021565	IPIC60-101X	Kit IC60 modular housing, wired, ext. LCD Keypad, no Battery -space for 3PIR / individual packing
A5Q00021566	IPIC60-111X	Kit IC60 compact panel, wireless,1 Remote Control, incl. Battery – space for 3 PIR/ individual packing
		PANEL SINTONY 60
A5Q00013934	IC60-8	Sintony 60 compact panel 8 zones incl. LCD,AC/DC converter, no wireless, no Battery
A5Q00013935	IC60W-10	Sintony 60 compact panel 16 zones incl. LCD, with receiver 868MHz, AC/DC converter, no Battery.
A5Q00013933	IC60M-8	Sintony 60 modular housing 8-16 zones, incl. Trafo, no wireless, no Battery- (needs Keypad for operation!)
		PANEL ACCESSORIES
A5Q00020291	IZE6-04	4 wired zone expander module
A5Q00013944	IRO6-04	4 Relay Output module 12V/ 1A
Later in 2007	IGS6-10	External GSM Backup module with housing, Quad Band
Later in 2007	IAV6-90	2 way voice Audio verification module
A5Q00020290	IKP6-03	External LCD Keypad with large display
A5Q00013972	IAR6-30	Contact less ID Access card reader 125kHz
A5Q00013945	IRCW6-10	IC60 Remote control 868Mhz, waterproof, white
A5Q00013940	IRFW6-10	Internal RF Receiver Module 868 for IC60M
A5Q00020293	IAB1201-8	Battery pack NiMh 12V/1.8Ah
		Other panel accessories
A5Q00020294	IVK-6	Vertical mounting Kit
A5Q00013954	IMM6-1	Memory Stick
A5Q00013955	IAS6-1	CD with installer Software
A5Q00013952	IAQ6-1	PC Interface cable
A5Q00013948	IUM6-1	User Manual
A5Q00013946	IIM6-1	Installation and Instruction Manual

Siemens Schweiz AG
International Headquarters
Gubelstrasse 22
CH – 6301 Zug
Tel. +41 41 724 24 24
Fax +41 41 724 35 22
www.sbt.siemens.com

© 2007 Copyright by
Building Technologies Group
Subject to delivery conditions and technical changes.