

# USB-Com Installation Instructions

## Introduction

The *USB-Com* module can be connected to various Texecom control panels to allow full upload/download of system program data via a PC and appropriate UDL software package. The *USB-Com* is compatible with the following Windows® operating systems:

- Windows 98 Second Edition (SE)
- Windows 2000
- Windows Millennium Edition (Me)
- Windows XP

## Connections

The figure below shows the layout of the *USB-Com* connectors:

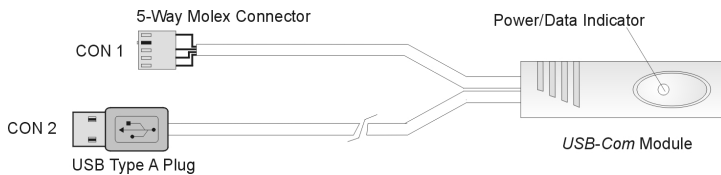


Figure 1. *USB-Com* Connectors

**CON 1:** This 5-way Molex type connector is for plugging onto the Texecom *Veritas R8 Plus*, *Veritas Excel* and all *Premier* control panels. By using the appropriate UDL software package the control panel can be programmed locally.

**CON 2:** This USB type "A" connector should be plugged into one of the PC's USB ports.

**Power/Data Indicator:** This is a bi-coloured indicator that is lit green when the *USB-Com* is powered. When the *USB-Com* is sending and receiving data it flashes between red and green.

## USB Driver Installation

The *USB-Com* requires a driver to be installed onto the PC before it can be used. The driver can be found on the Wintex CD in the **D:\USB-Com** folder or alternatively it can be downloaded from the Texecom web site [www.texecom.com](http://www.texecom.com).

### Windows 98SE and Windows ME

- 1) Plug CON 1 of the *USB-Com* onto the control panel and ensure that the control panel is powered up.
- 2) Plug CON 2 of the *USB-Com* into a USB port on the PC. Turn on your computer to allow the Operating System to detect the *USB-Com*.
- 3) When detected the **Add New Hardware Wizard** screen appears:



- 4) If you are using the drivers from the Wintex CD insert the CD into your DVD/CD-ROM drive. Then click the **Specify the location of the driver (Advanced)** option and click the **Next** button.
- 5) Click the **Specify a location** check box. Then, click the **Browse** button to locate the driver files in **D:\USB-Com\Win98ME** (where D: represents your DVD/CD-ROM drive). Ensure that the **Removable Media (Floppy, CD-ROM...)** check box is not selected:



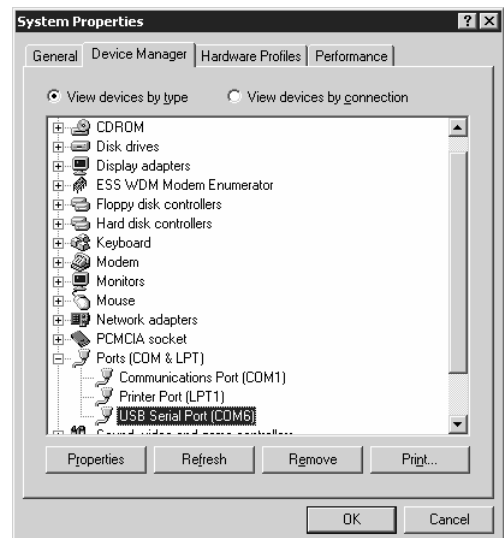
- 6) Click the **Next** button, the following screen appears:



- 7) Click the **Next** button, the following screen appears:



- 8) Click the **Finish** button to complete the *USB-Com* installation.
- 9) The *USB-Com* will be assigned a virtual com port, to find out which port number has been assigned to the *USB-Com*, open the **Device Manager** (press the **+Break** on your keyboard) and expand the **Ports (COM & LPT)** option. You should see the **USB Serial Port** and its com port number, COM6 in the example below:



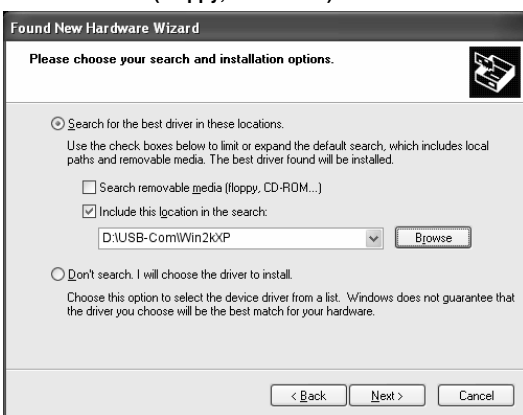
- 10) The *USB-Com* is now installed and ready for use with the appropriate UDL software package, see **Configuring the UDL Software** over.

## ► Windows XP and Windows 2000

- 1) Plug CON 1 of the *USB-Com* onto the control panel and ensure that the control panel is powered up.
- 2) Plug CON 2 of the *USB-Com* into a USB port on the PC. Turn on your computer to allow the Operating System to detect the *USB-Com*.
- 3) When detected the **Found New Hardware Wizard** screen appears:



- 4) If you are using the driver from the Wintex CD insert the CD into your CD-ROM/DVD drive. Then click the **Install from a list or specific location (Advanced)** option and click the **Next** button.
- 5) Click the **Include this location in the search** check box. Then, click the **Browse** button to locate the driver files in **D:\USB-Com\Win2kXP** (where D: represents your DVD/CD-ROM drive). Ensure that the **Search removable Media (Floppy, CD-ROM...)** check box is not selected:



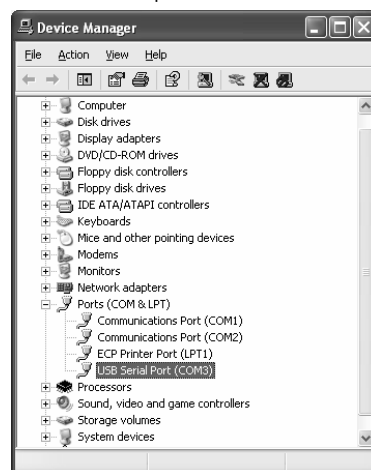
- 6) Click the **Next** button, the following screen appears:



- 7) Click the **Finish** button to complete the USB High Speed Serial Converter installation.
- 8) After a short delay the **Found New Hardware Wizard** screen will appear again:



- 9) Repeat steps 4 to 7 to install the USB Serial Port driver.
- 10) The *USB-Com* will be assigned a virtual com port, to find out which port number has been assigned to the *USB-Com*, open the **Device Manager** (press the **+Break** on your keyboard) and expand the **Ports (COM & LPT)** option. You should see the **USB Serial Port** and its com port number, COM3 in the example below:



- 11) The *USB-Com* is now installed and ready for use with the appropriate UDL software package, see Configuring the UDL Software below.

## Configuring the UDL Software

Once the USB driver is installed you need to configure the UDL software to the same port that was assigned by the virtual com port driver:

### ► Wintex UDL

- 1) Run *Wintex* and open the **Modem Settings & Options** screen by pressing **CTRL+M** on the keyboard.
- 2) In the **PC-Com Options** section set the com port to the same number that was assigned by the USB driver, e.g. COM3.
- 3) Click on the **OK** button. *Wintex* is now ready for use.

### ► Veritas UDL

- 1) Run *Veritas UDL* and open the **Modem Settings & Options** screen by pressing **CTRL+M** on the keyboard.
- 2) In the **Com Port** section set the com port to the same number that was assigned by the USB driver, e.g. COM3.
- 3) In the **Modem Options** section set the modem type to **PC-Com Module**.
- 4) Click on the **OK** button. *Veritas UDL* is now ready for use.



The *USB-Com* conforms to European Union (EU) Low Voltage Directive (LVD) 73/23/EEC (amended by 93/68/EEC) and Electro-Magnetic Compatibility (EMC) Directive 89/336/EEC (amended by 92/31/EEC and 93/68/EEC).

The CE mark indicates that this product complies with the European requirements for safety, health, environment and customer protection.

**Texecom**  
www.texe.com

Texecom Limited, Bradwood Court, St. Crispin Way, Haslingden, Lancashire BB4 4PW, England.

**Technical Support:**

**Tel:** +44 (0)1706 234833; **Tel:** +44 (0)1706 234811; **Fax:** +44 (0)1706 213187