



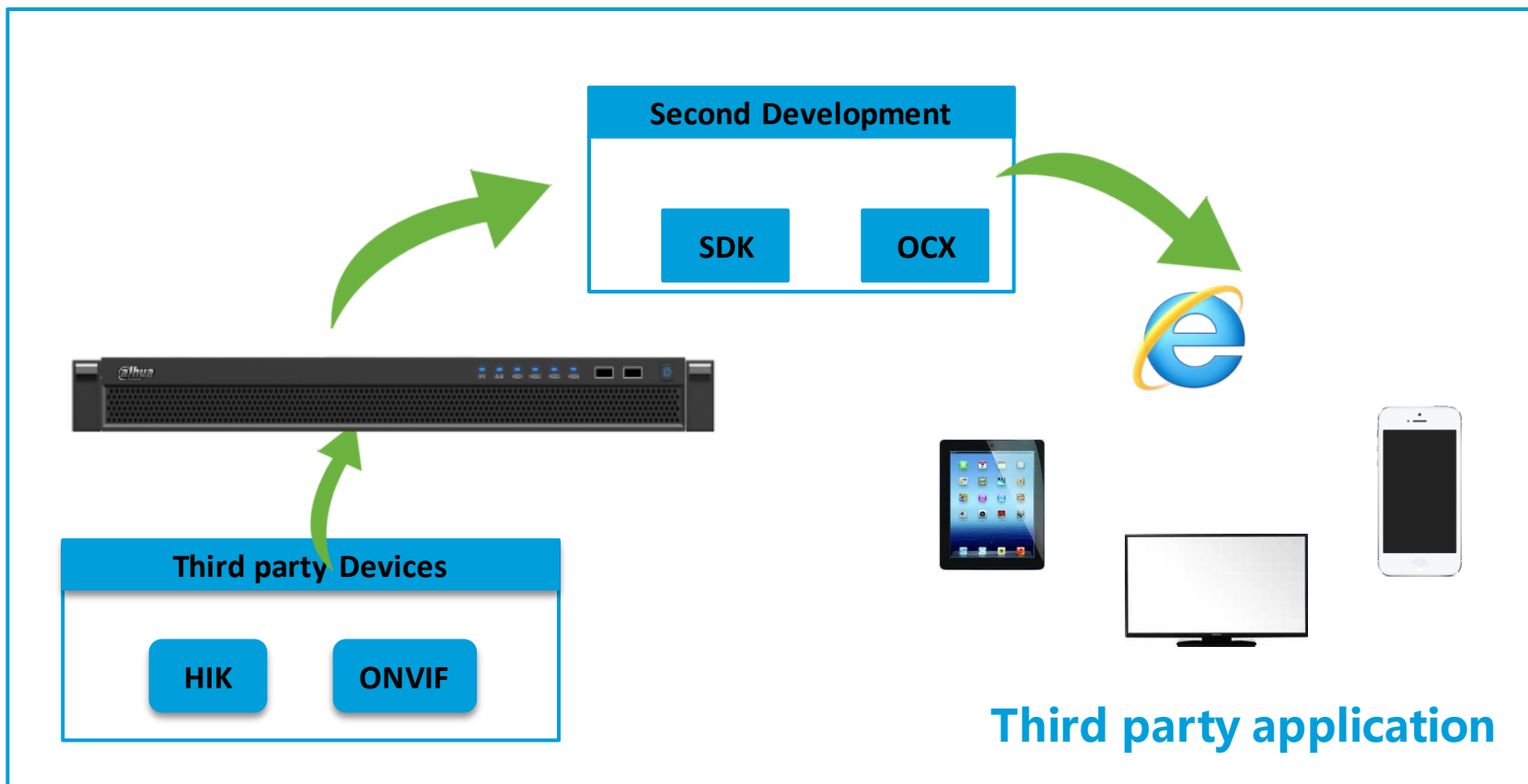
Dahua Security Surveillance Solution

System Composition



Open Third party

- Open platform SDK, Support partners to develop their own business and Applications. Support windows, IOS, android platform.
- Support ONVIF devices, third party equipment (HIK).

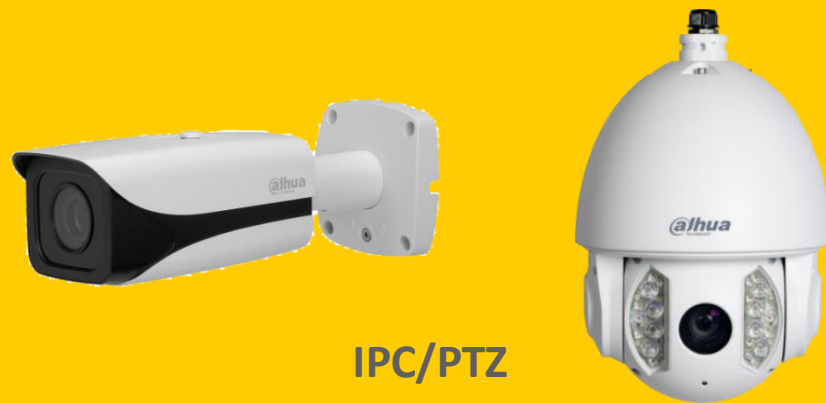


Main Function

- Get Organization
- Live View: snapshot, local record, PTZ
- Playback: search, play, download
- Alarm: search, open/close alarm
- Audio talk
- TV Wall: get TV Wall case and info, operator the TV Wall



Fisheye



IPC/PTZ



NVR



IVS

Device Management



Alarm Host



Controller & Keyboard

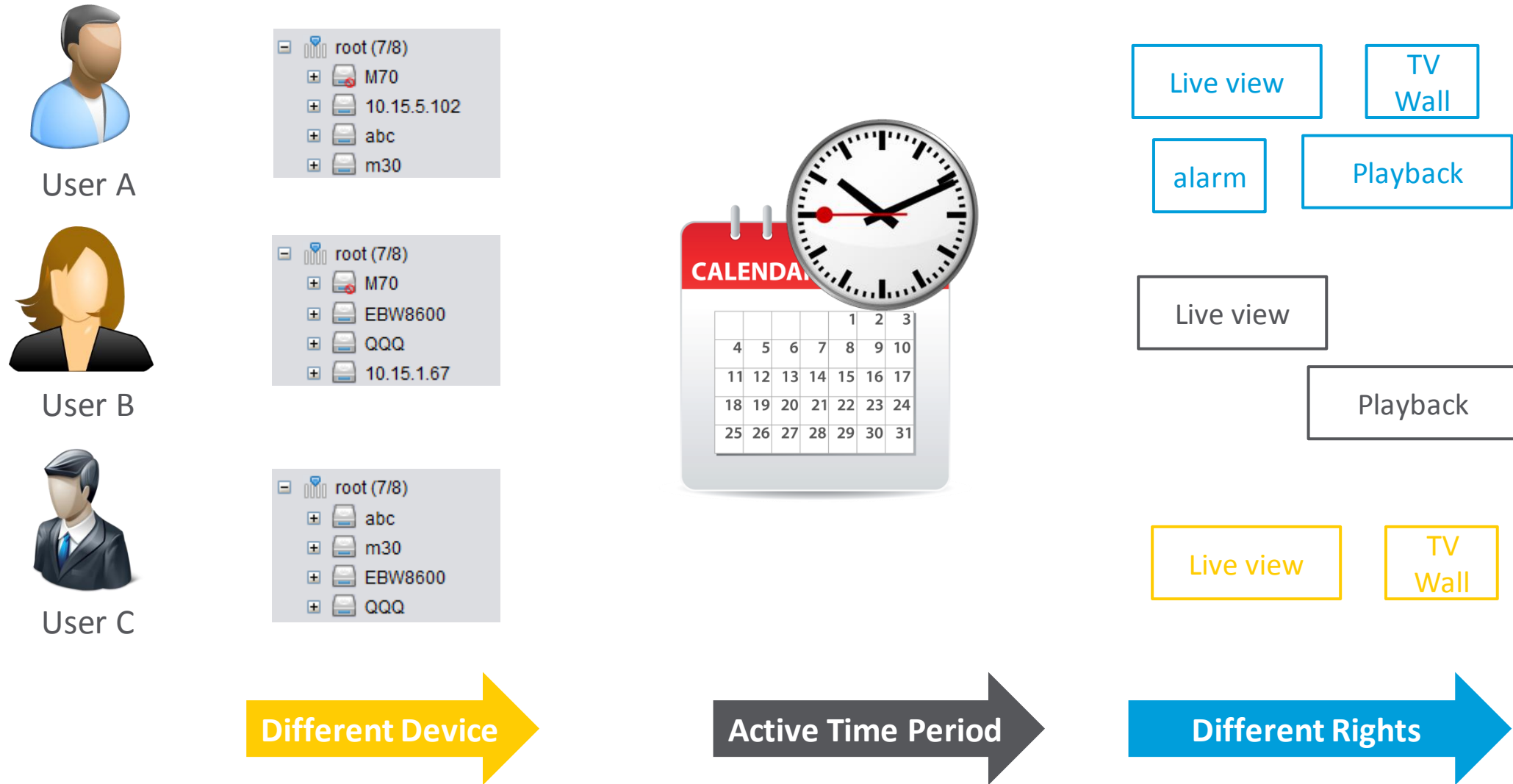


Third-party devices(ONVIF, HIK)

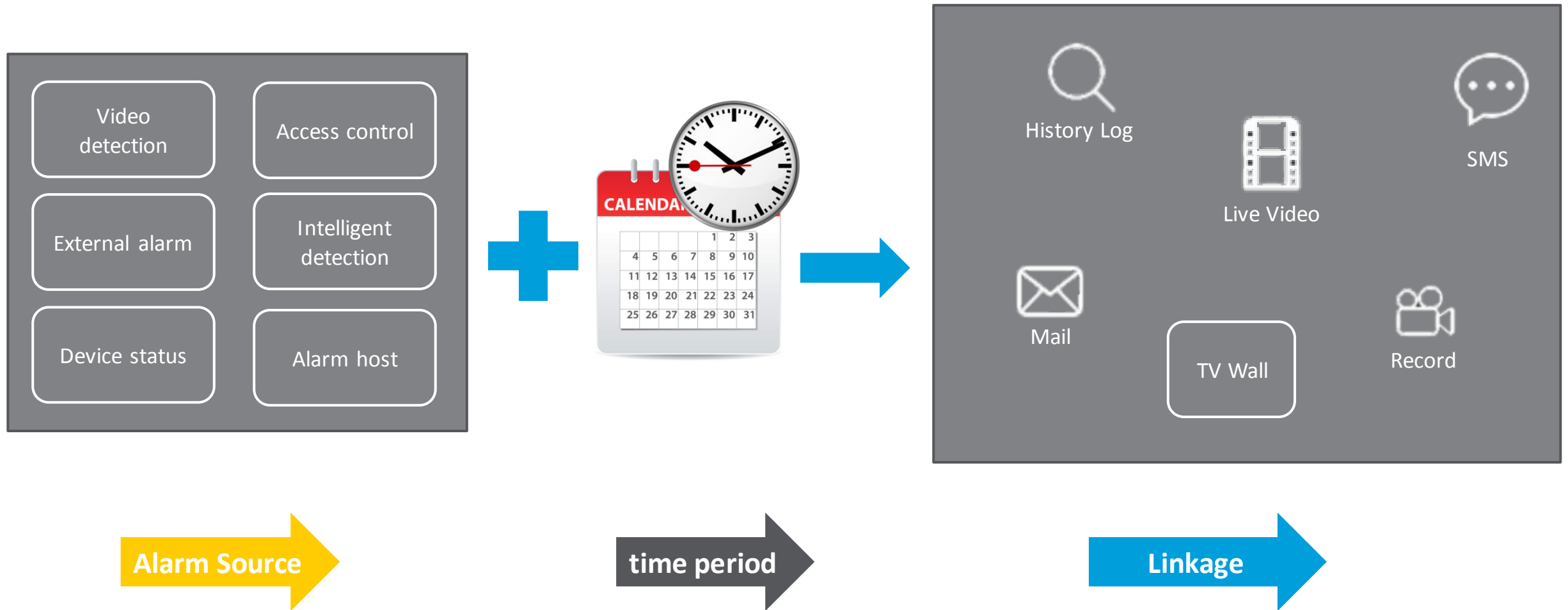


Access Control

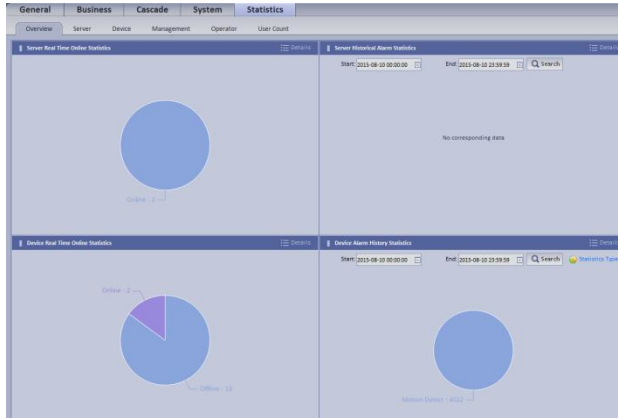
Authority Management



Alarm Management

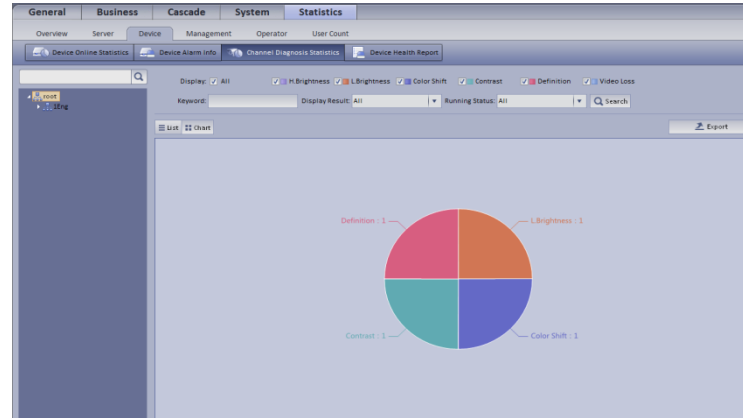


Statistics



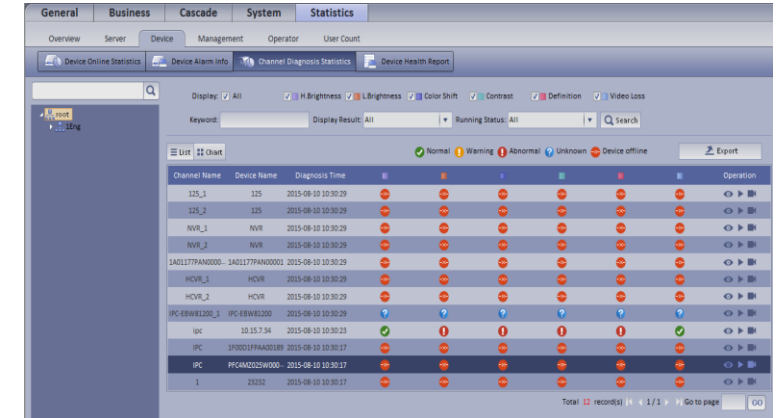
Servers information

- online status
- alarm status(high temperature, server status change)



Device information

- online status
- alarm status(all device and channel alarm)



video quality diagnosis

- High Brightness\Low Brightness\
Colorshift\Contrast\Definition\Video Loss



- Manager can find server or device abnormal and solve it on time.

Client



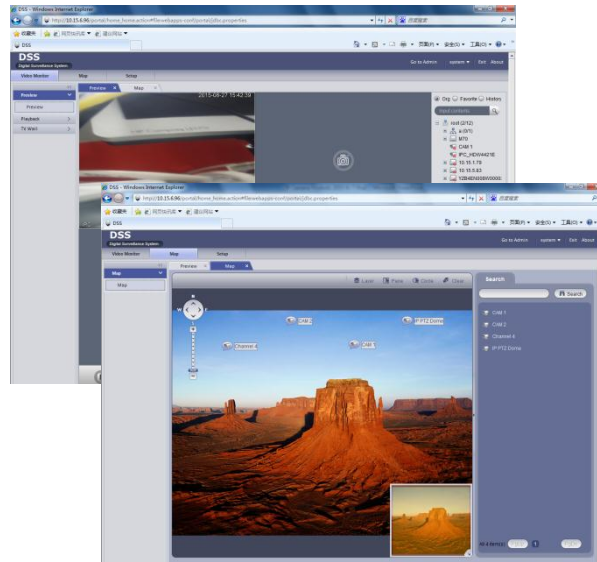
DSSClient



Web Client



Mobile Client
(IOS, Android)

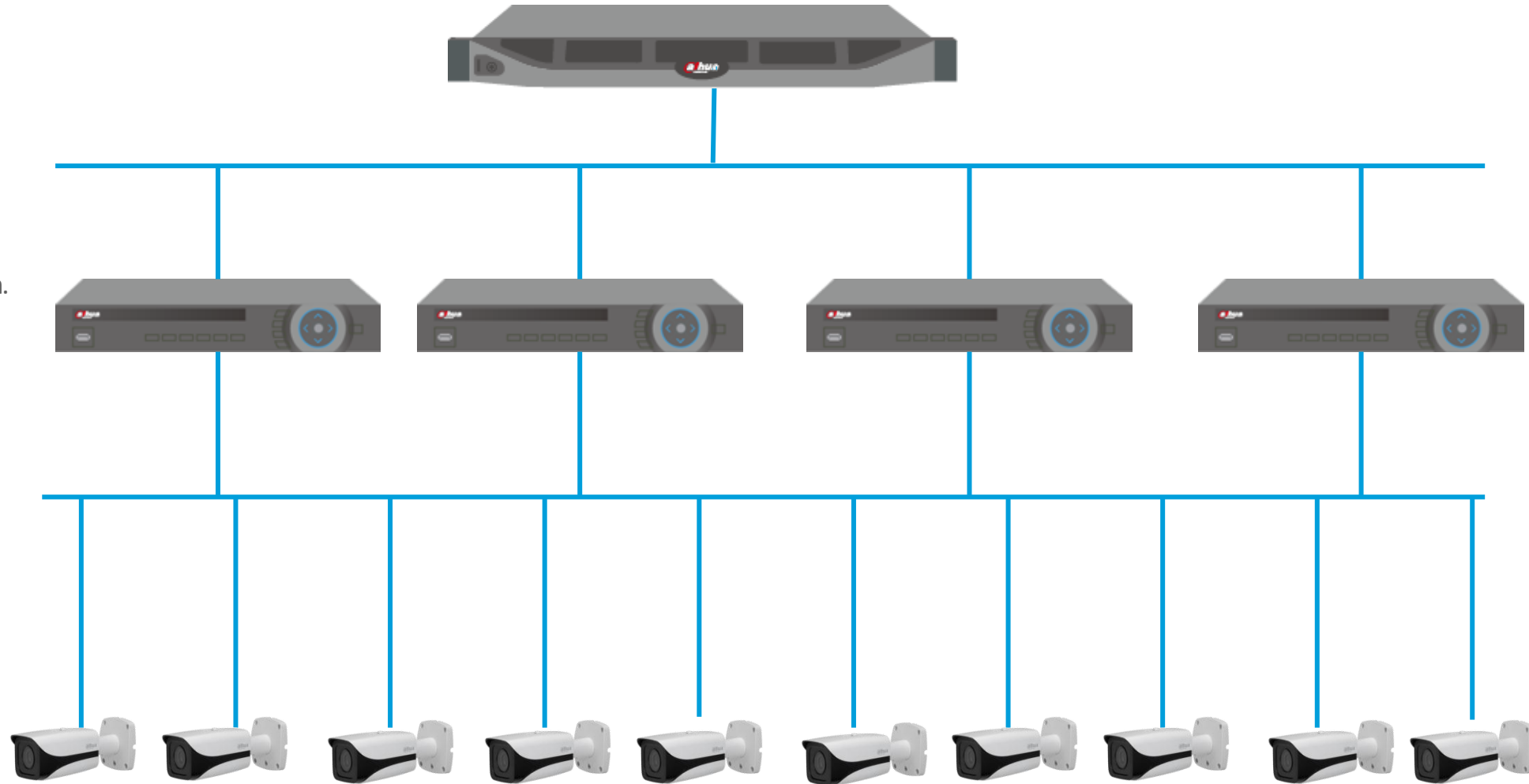


Basic Video Surveillance



NVR Storage | Easily

DSS



- Suitable for medium, small system.
- Easy installation and extension.
- independent storage.

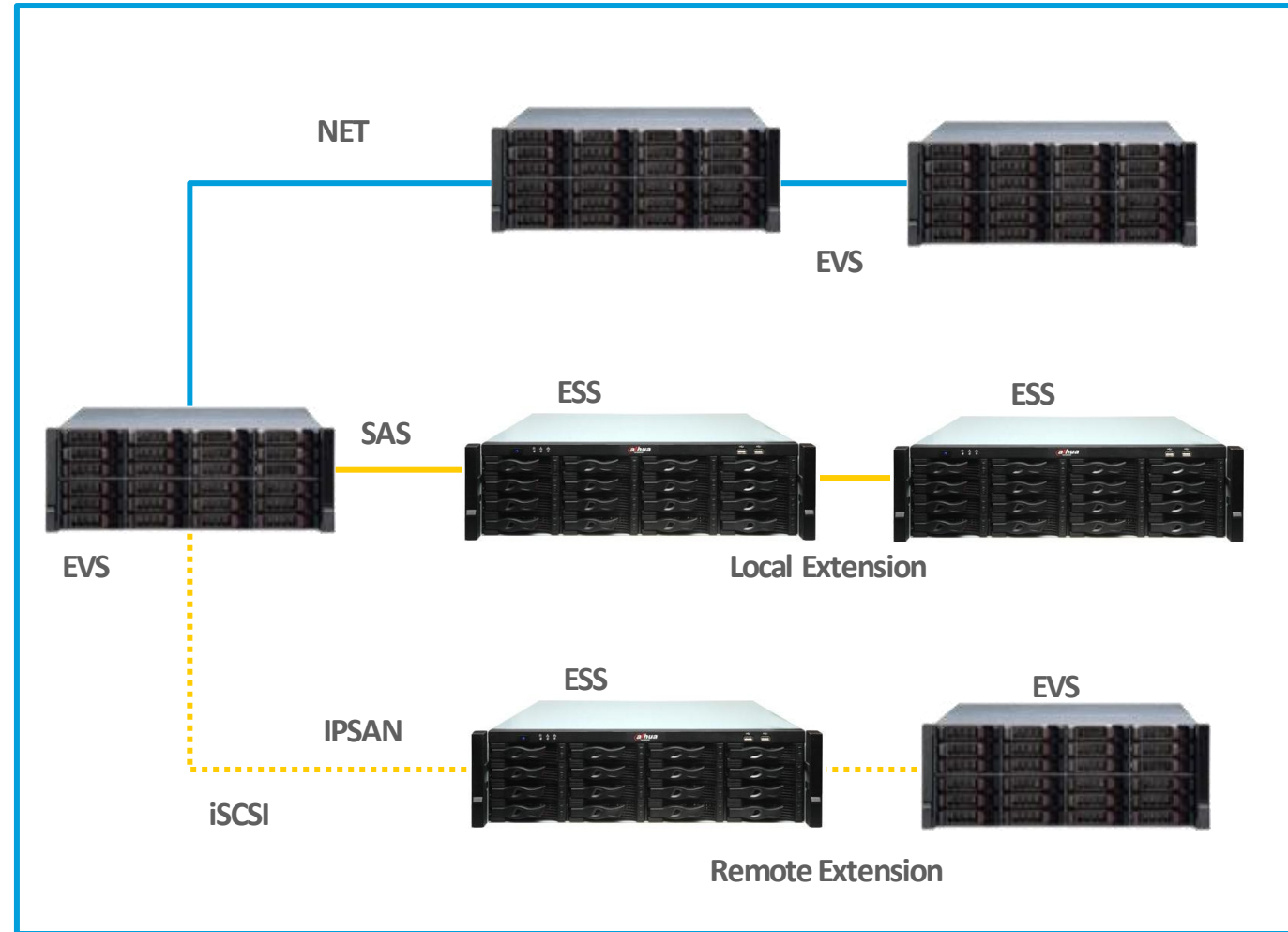
EVS Storage

- Easy to extend storage capacity by adding more EVS. and unity manage these EVS through DSS.
- Local extension(**JBOD**): Connect to ESS extension storage, Stability and support large capacity.
- Remote extension: Connect to ESS or EVS or NAS storage by iSCSI protocol, use IPSAN to release storage extension



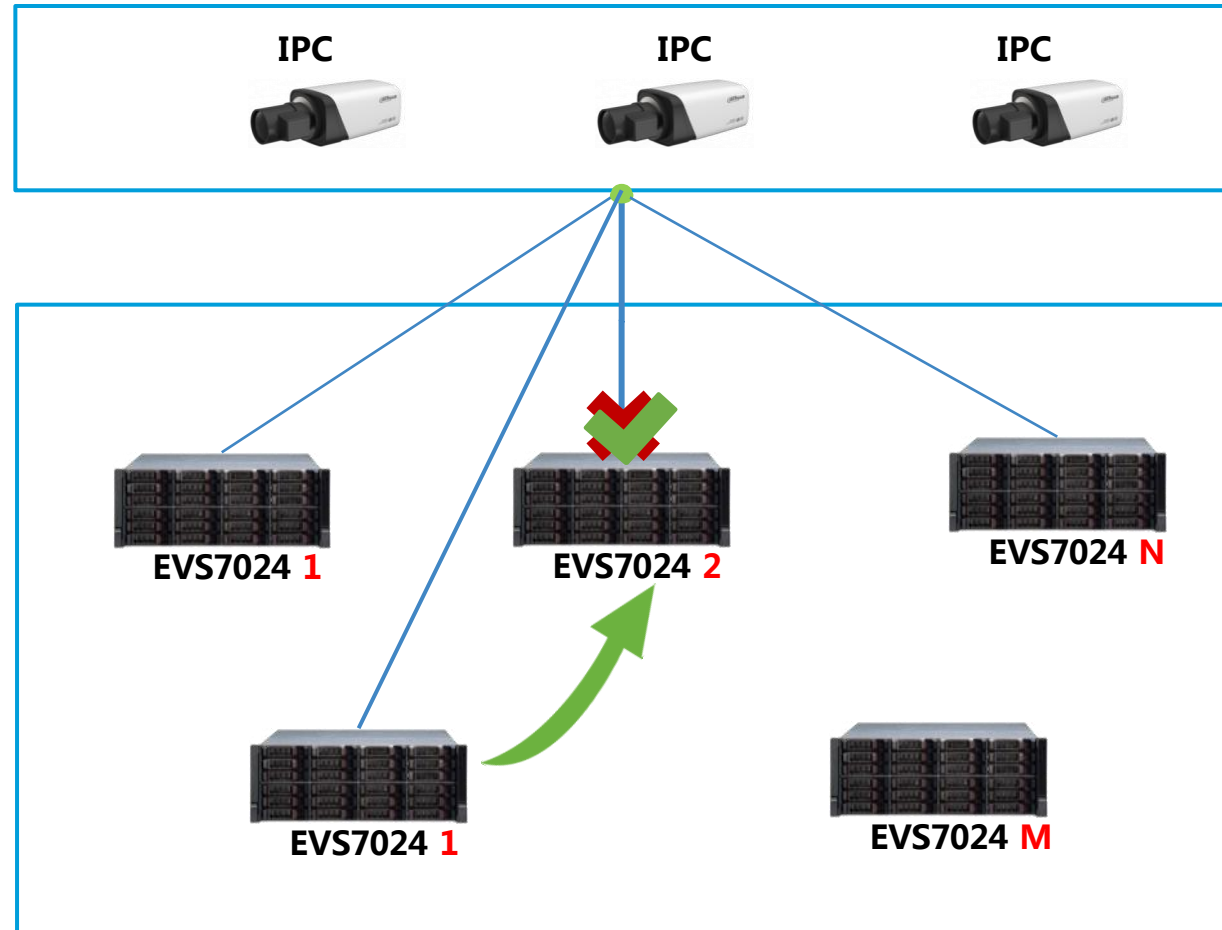
ADVISE

In real installation, you can combine way one with JBOD way together, support larger capacity , high reliability, high price ratio.



EVS N+M Storage

- **N** pcs working devices , **M** pcs backup devices
& take care of working device
- While device in workgroup fails, it would be replaced by the backup devices
- While the failure device return to normal, the video data in backup device would be transmitted back.

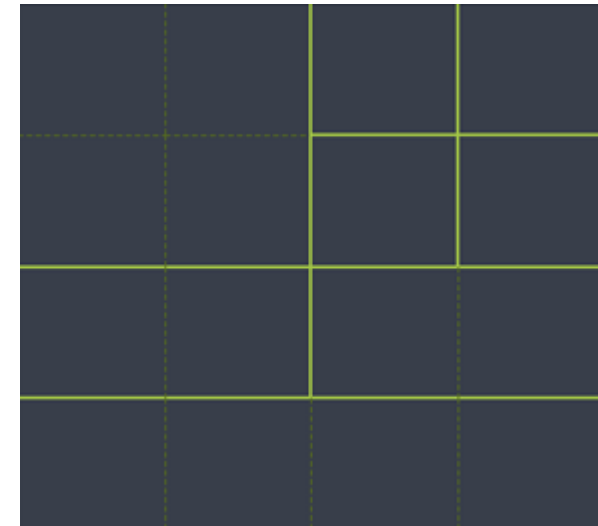


Preview



- Real Time Monitor, Manual Record, manual Snapshot
- If device type is PTZ, then you can click on PTZ tab in the interface to set PTZ
- You can set tour task to achieve tour over several windows.
- Add channel to Favorite which you will monitor usually, so it can be open more easier when you need.

Customized Layout



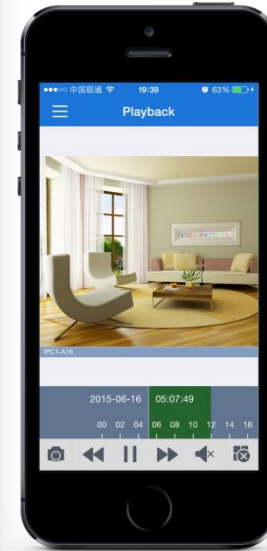
- Customize any layouts you want, support up to 64 windows.
- show videos with different aspect ratios: 4:3, 16:9, panorama.

Fisheye



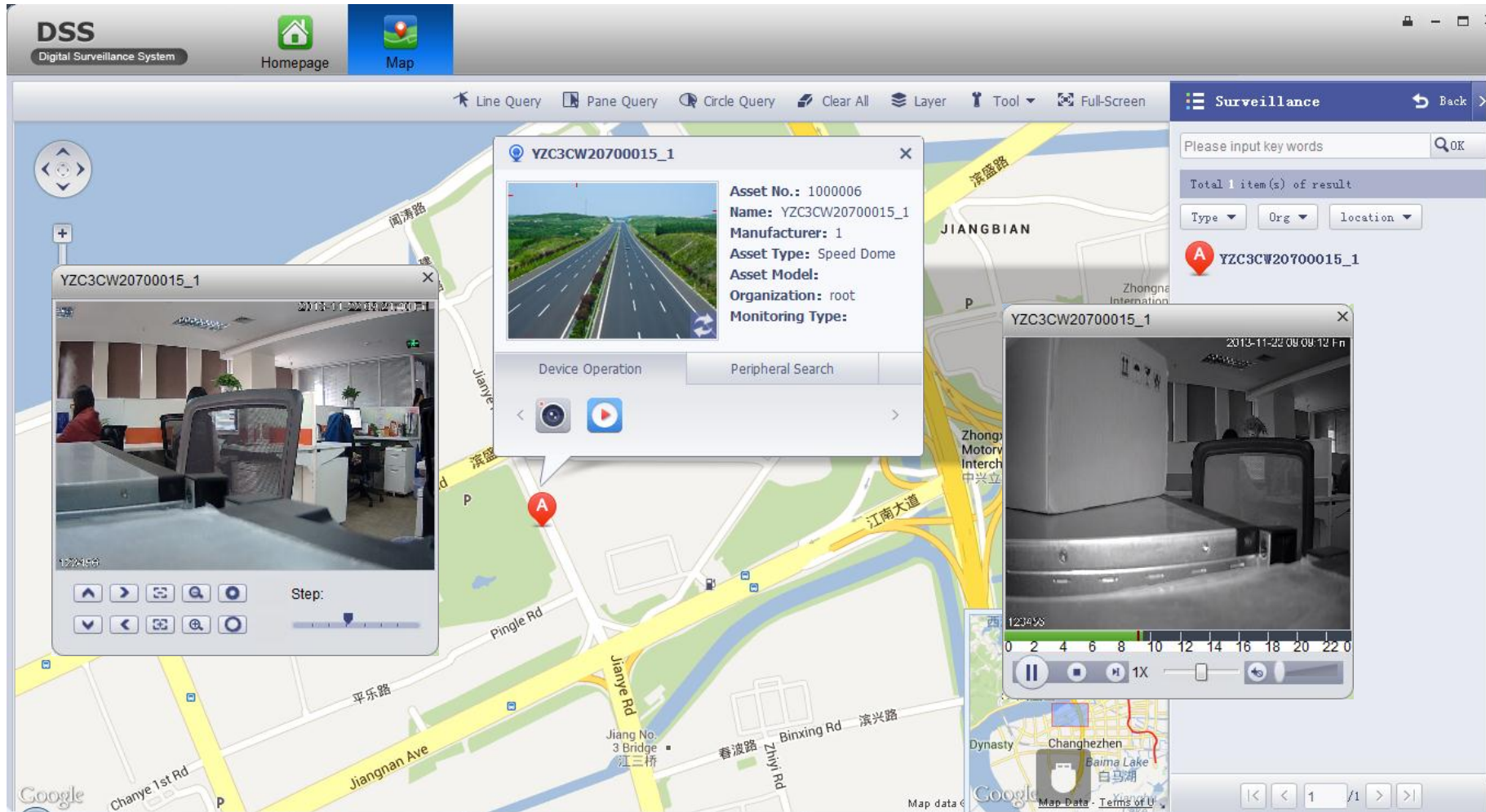
- Several "normal" flat images are obtained for display on the client screen
- Several View modes can be choose.
- Support fisheye calibration.

Playback



- You can search different channel, different time, and different types of record, and play the record.
- Support **sync play**, you can play records from different channels at the same time. Support up to 16 channels.
- Drag to any time you want to play through timeline pane. And support zoom in and zoom out.
- Support download records.

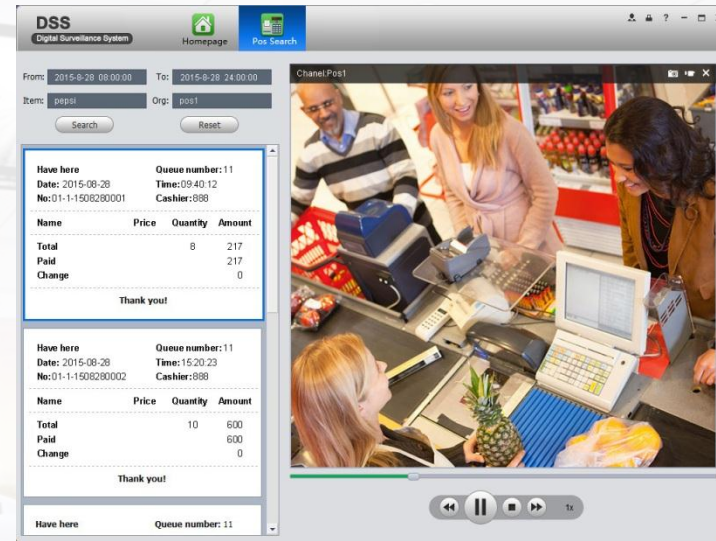
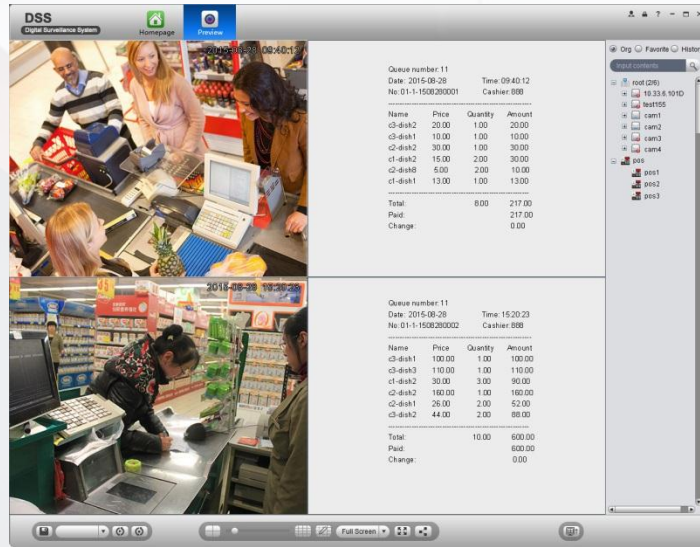
Emap



- Supports video channel and alarm channel display on map
- Support video monitor and playback.
- Support Google Map , Raster Map



POS



- POS information is sent to NVR and DSS and stored in NVR and DSS .
- you can view the live video and the POS information of the transaction, You can click-or-drag the POS terminal in live view to window if needed.
- You can search the POS information of the connected POS terminal and the related record files.



POS

Parallel port



Data Collection

Net



NVR

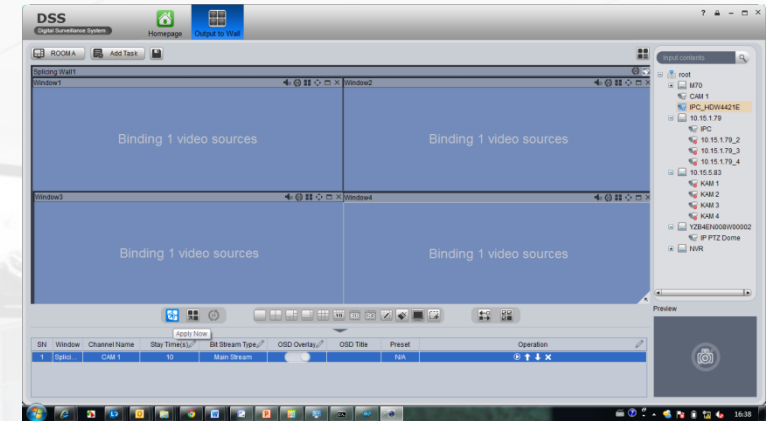
Net



DSS

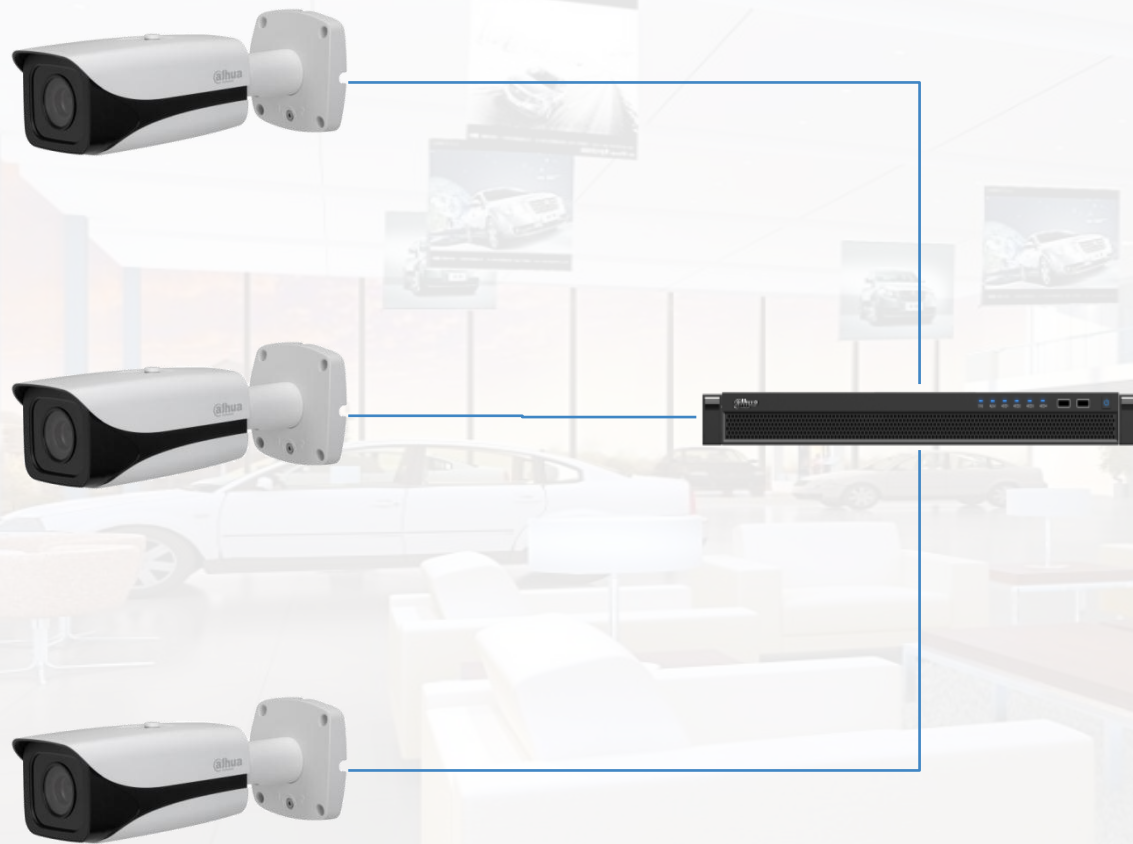


TV WALL Solution



- Add the TV Wall Object, and binding the decode device, Such as M70. DSS can manage several TV Wall objects.
- Control TV Wall Display by DSSClient or NKB3000, include layouts and channel.
- Configure the tour task of TV Wall, which can display different video source in designated interval automatically.

Basic Intelligence



Smart IPC

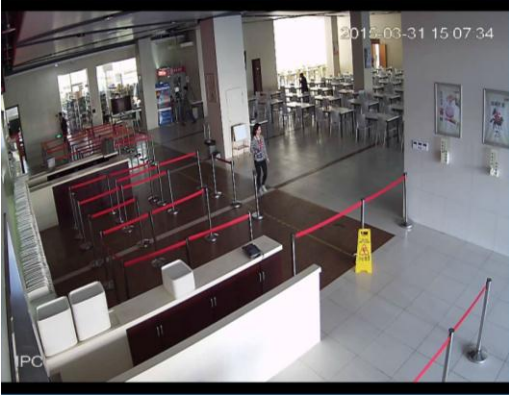
DSS



Intelligent interface

Tripwire & Intrusion

Tripwire



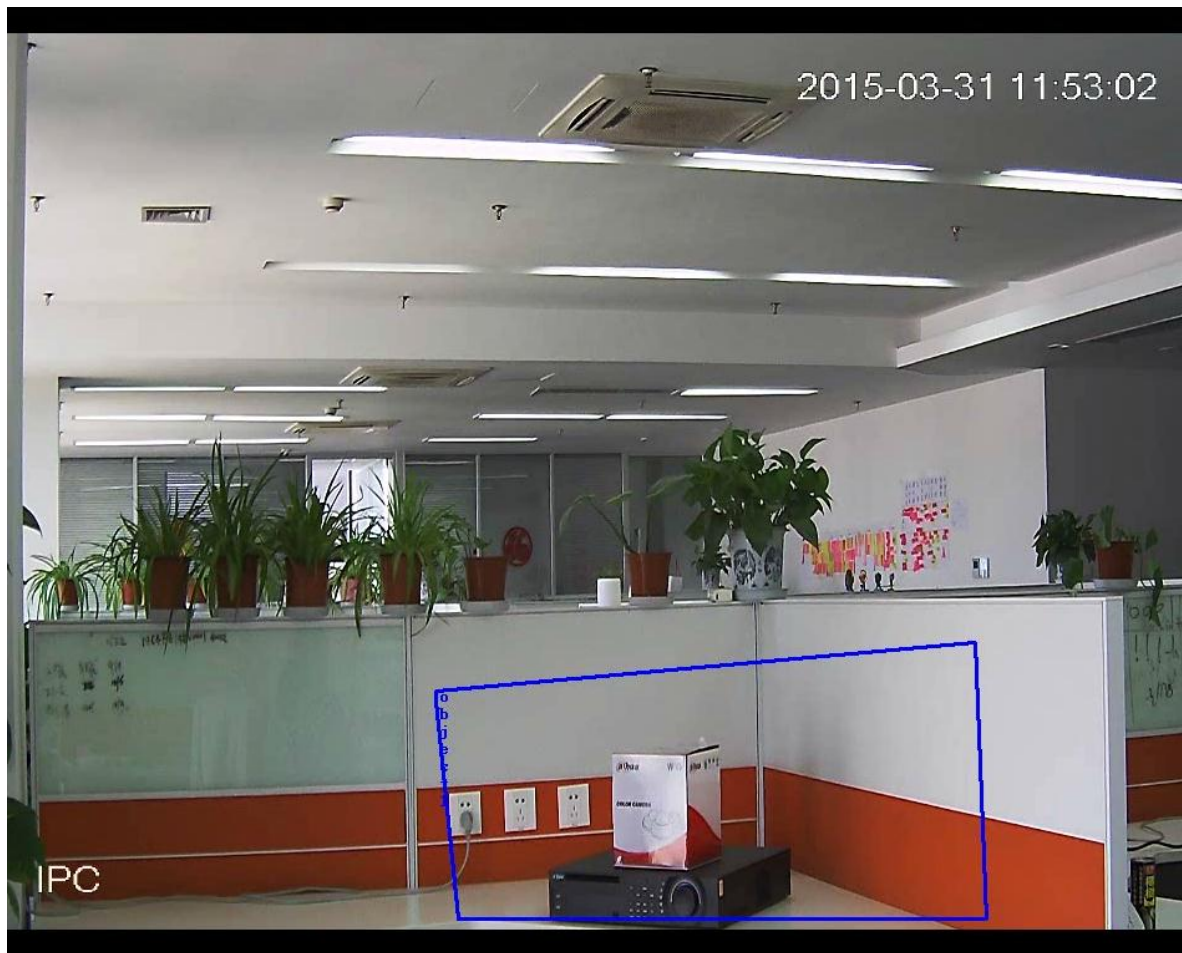
It is to detect if there is any object crossing the warning line, it can support different direction selection, such as A->B, B->A and bidirectional, and it can activate record, snapshot and alarm according to the judgment result.

It is to detect if there is any object entering or leaving the area, it will trigger rule when crossing the area perimeter, support enter, leave and enter&leave three direction selection, it can activate record, snapshot and alarm according to the judgment result.

Intrusion



Object Abandoned / Missing



Object abandoned means that it is to detect if there is any object abandoned in the designated detection area and surpass the set time. It will activate record, snapshot and alarm according to the judgment result.

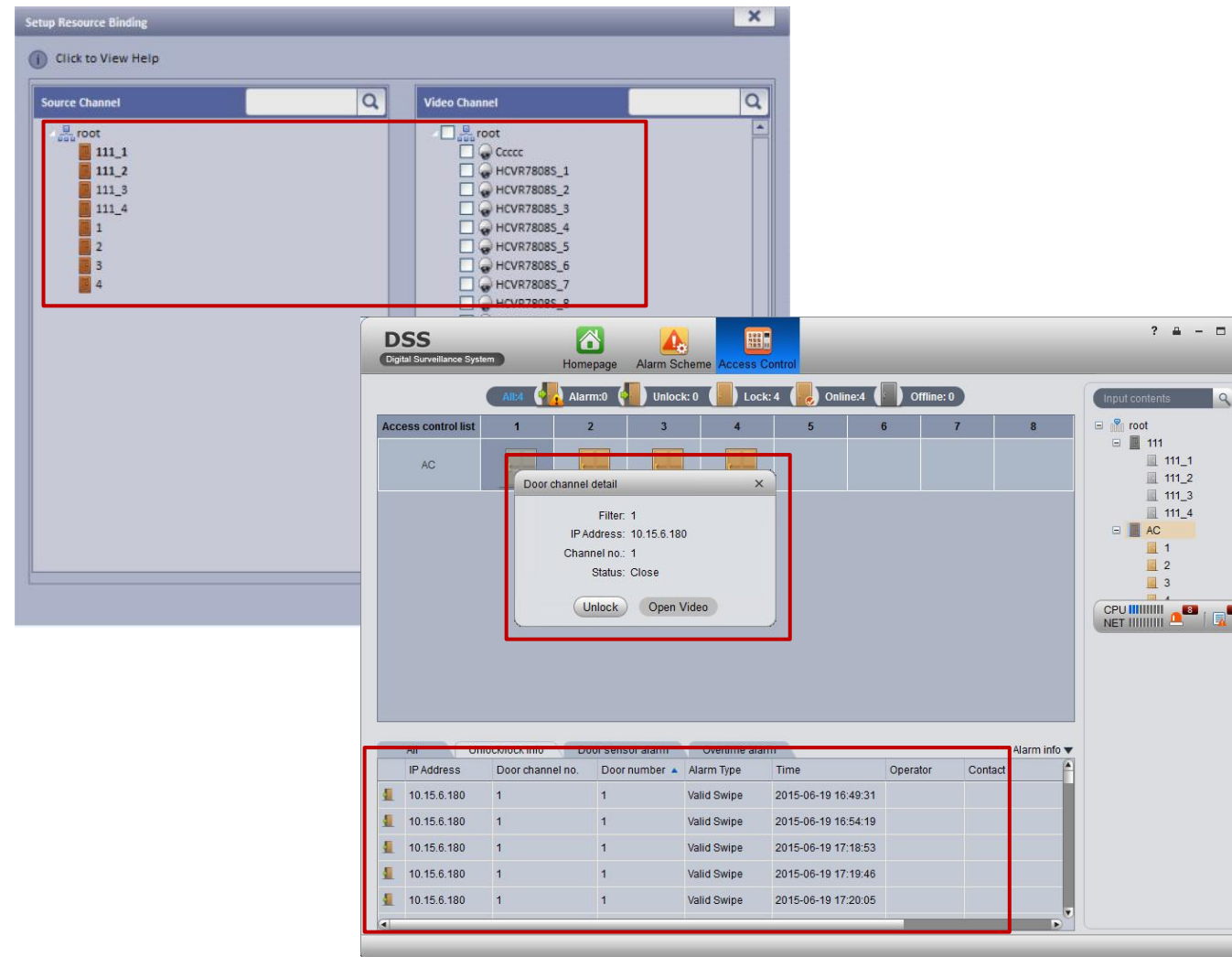
Object missing means that it is to detect if there is any object moved in the designated area and surpass the set time. It will activate record, snapshot and alarm according to the judgment result.

Access Control Solution



Access Control Solution

- Bind access control with video, then you can open video in access control interface in client.
- Alarm management, support several alarm type.
- Remote Control open and close the door. And show the alarm info.



- ☐ Unlock via Forced Card
- ☐ Unlock via Valid Password
- ☐ Unlock via Invalid Password
- ☐ Unlock via Forced Password
- ☐ Unlock via Valid Fingerprint
- ☐ Unlock via Invalid Fingerprint
- ☒ Unlock via Forced Fingerprint
- ☐ Valid Swipe
- ☐ Invalid Swipe
- ☐ Door Sensor Alarm
- ☐ Abnormal Unlock
- ☐ Abnormal Lock
- ☐ Normal Lock
- ☐ Normal Unlock
- ☐ Overtime Level 1
- ☐ Overtime Level 2
- ☐ Overtime Level 3
- ☐ Overtime Level 4
- ☐ Overtime Level 5

Why DSS?

DSS	Smart PSS
Network integrated management mode	Local management mode
Transfer Mode, support up to 1000 online users	Direct Mode, supports only 10 users simultaneously access
Application integration and information integration, support alarm, access control,	Unable to integrate advanced application and information integration
Guarantee the quantity and quality of equipment management, easy expansion Max support 2000 channels(Max support 500 input devices)	Limited number of management equipment, Max support 500 channels(Max support 100 input devices)
Authority management	No authority management
Unified management of whole system resources	Can not effectively solve the problem of resource conflict

Easy Installation



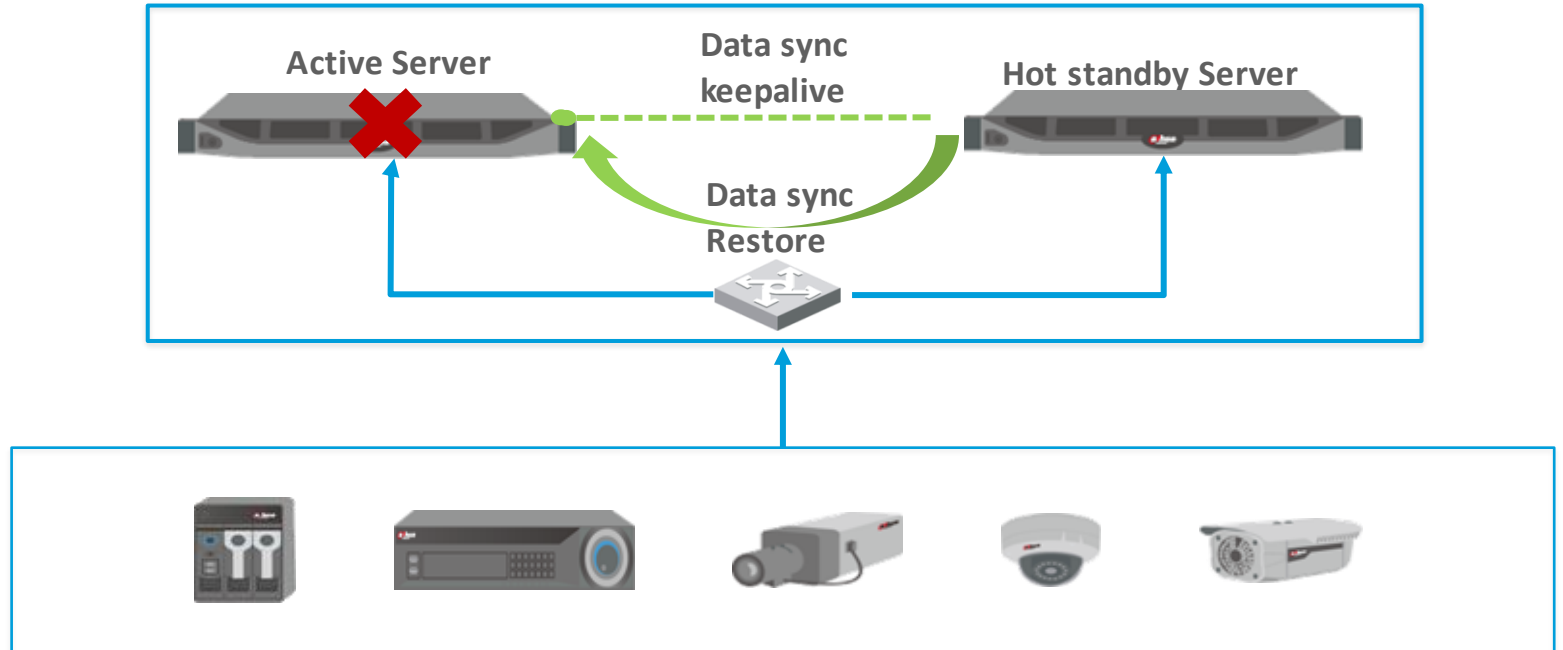
Plug and play

- Power On.
- Configure IP of DSS.
- Finish Initialization according to “Quick Guide”.



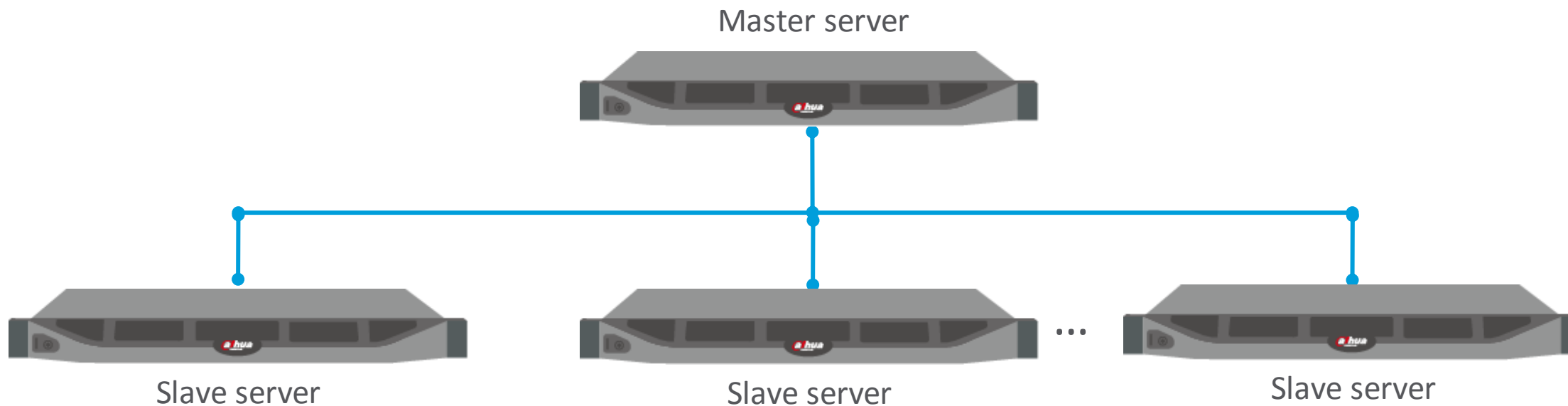
Dual Hot Standby

- Linux system, Anti virus, professional and security. Safe and stable, highly reliable
- Hot standby mode can improve the stability of system, when the active server fail or disconnect, the hot standby server change to active mode automatically and the system keep on work normally .



Distribute Installation

- DSS support Distribute by Master-Slave mode, with Higher scalability
- Realize linear expansion by adding slave server to meet business requirements
- You can easy to use when only need to add new slave sever information



DSS Family

Apply to basic video surveillance system, like shops, factory .Including monitoring, playback, Intelligent.



DSS-B

Apply to Intelligence Transportation System, Support Red Light Enforcement , ANPR, Radar Speed Enforcement and etc.



DSS-T

DSS-M



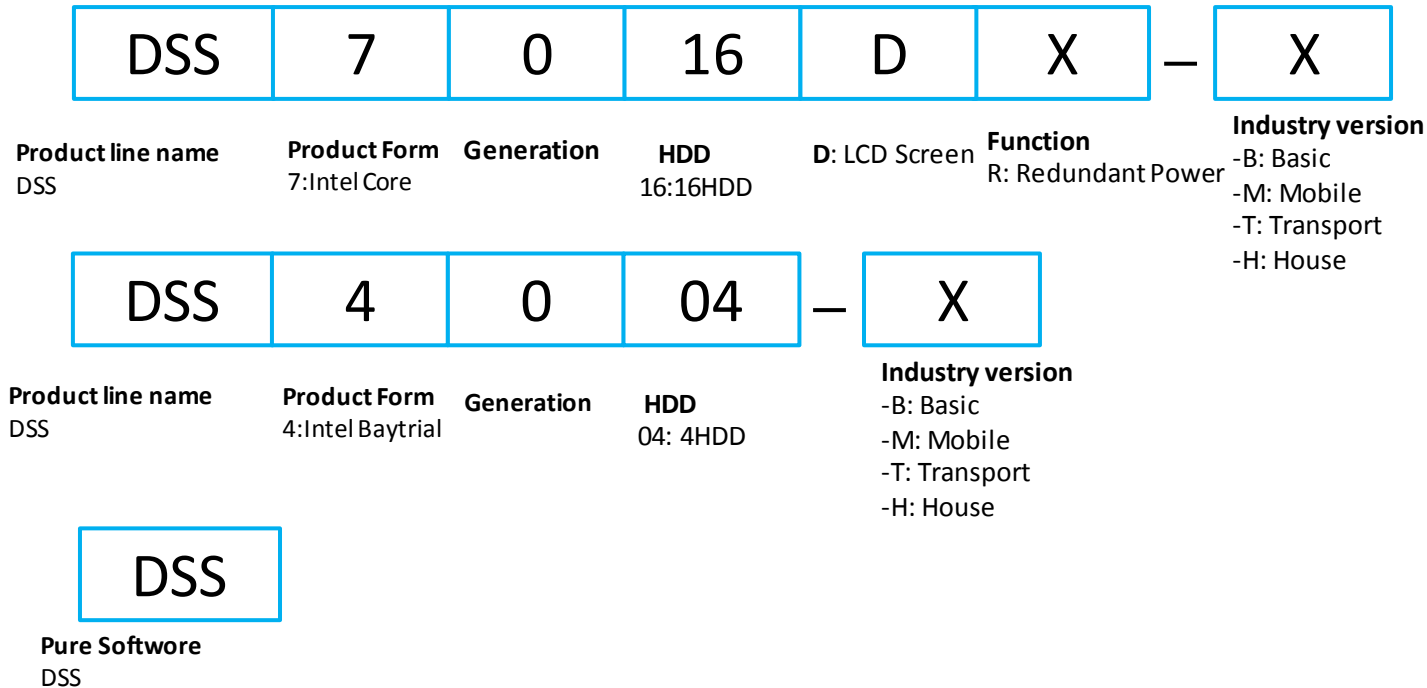
In addition to the basic functions ,such as real-time monitoring, playback , E-map. DSS-M also enhances its user-experience on the operation of GPS positioning, electric-Fence, track of vehicle, various reports and etc.

DSS-H

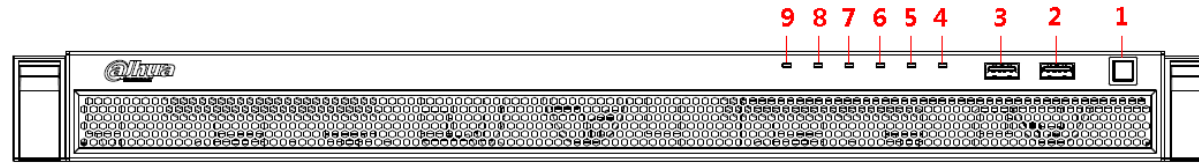


Apply to intelligent building, like Plaza, Shopping Mall, Hotels, parking lot. including video surveillance, access control, alarm, video intercom and intelligent parking lot together.

DSS Product | Name rule

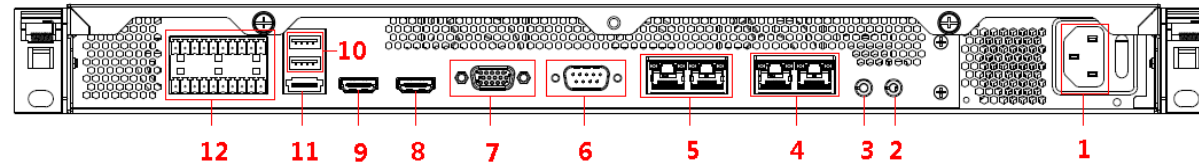


DSS Product | DSS4004



Front Panel

- | | | |
|-----------------|---------|----------------------|
| 1- Power Button | 4- HDD4 | 7- HDD1 |
| 2- USB3.0 | 5- HDD3 | 8- Alarm Indicator |
| 3- USB3.0 | 6- HDD2 | 9- Network Indicator |



Back Panel

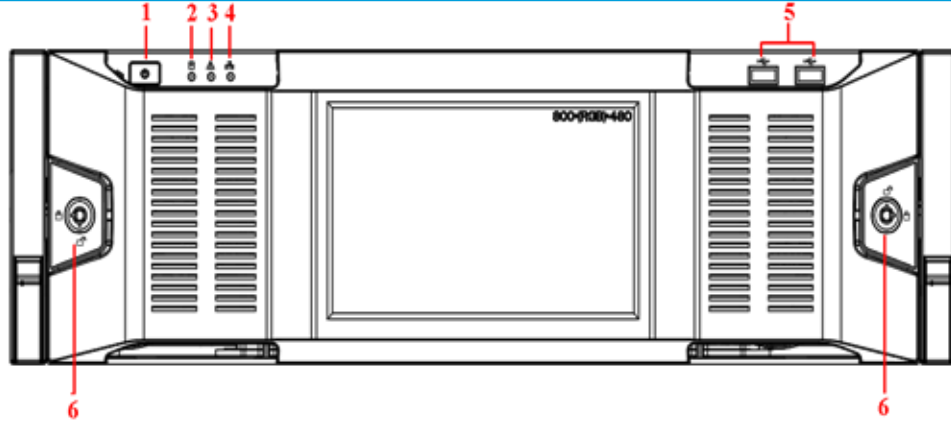
- | | | | |
|--------------------|------------------------|---------------------|---------------------|
| 1- Power Interface | 4- Ethernet Port 1~2 | 7- Video VGA Output | 10- USB2.0×2 |
| 2- Audio Output | 5- Ethernet Port 3~4 | 8- HDMI1 | 11- eSATA Interface |
| 3- Audio Input | 6- RS232 Interconnects | 9- HDMI2 | 12- Alarm In&Out |

DSS Product | DSS4004



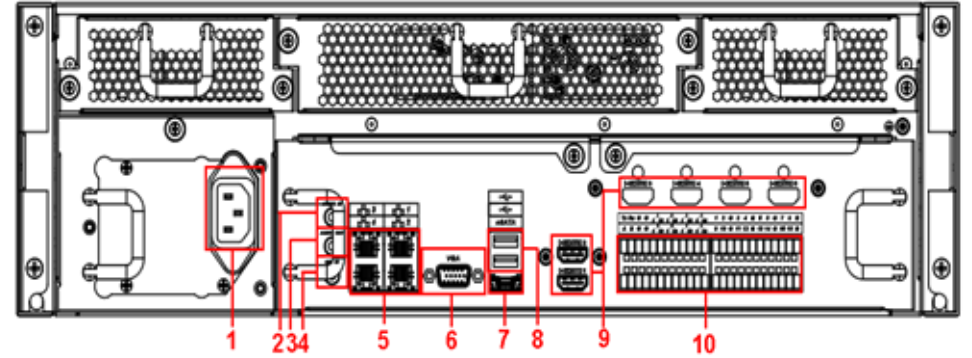
- Integrated design, lower combined cost
- Simple deployment, one-key upgrade
- Max support 500 channels(Max support 200input devices)
- Support 2000 accounts management and 100 online users
- Support 300M transfer capability
- Support 300M local storage capability

DSS Product | DSS7016D



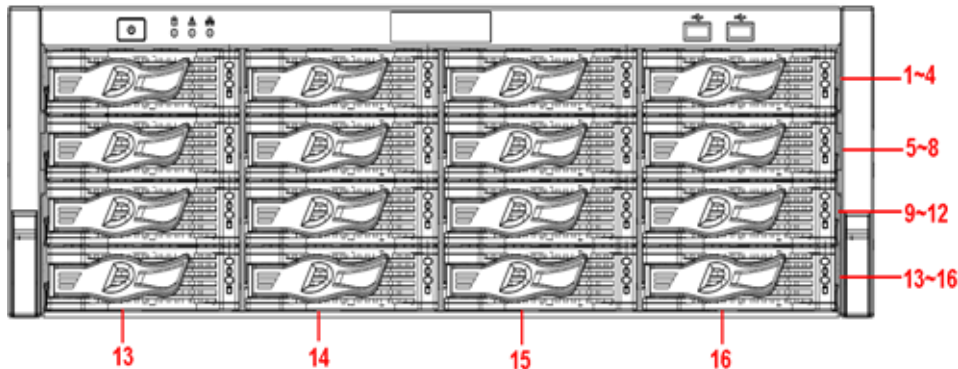
1-Power Button
2-System Indicator
3-Alarm Indicator

4-Net Indicator
5-USB
6-Front Panel Lock



1- PowerInterface
5- Net Interface
6-VGA

8-USB
9-HDMI
10-RS485



1-System HDD
2-16- Storage HDD

DSS Product | DSS7016D



- Embedded device, 30*24 stable operation
- High-performance stream media transfer and storage capability
- Support local storage and IP-SAN storage
- Front panel can displays system service status
- Max support 2000 channels(Max support 500 input devices)
- Support 10000 accounts management and 1000 online users
- Support 700M transfer capability
- Support 700M local storage capability

Products | M70



- Easy and flexible configuration with pluggable card module design
- 320ch@D1 or 80ch@1080P signal encoding (full configured)
- 640ch@D1 or 160ch@1080P signal decoding (full configured)
- Support analog/digital video signals input and matrix output
- Support SD/HD video signal matrix switch and output
- Support non-compressed digital signal encoding output
- Remote cast analog/digital video onto the video-wall
- Remote reboot/upgrade/default setting and etc operations

DSS Products | NKB3000




- Support DAHUA Standalone DVR, DAHUA (Network) High Speed Dome, DAHUA High Speed Dome, Central Management Platform, Network Video Server
- Four Dimensional Joystick Control of PTZ Functions
- Support full HD 1080p live view;
- Support HDMI & VGA sync output
- Support snapshot and recording to U-disk
- Support Video-Wall display
- Support external Wi-Fi (Optional)
- Preset Position, Auto Scan, Auto Pan, Auto Tour & Pattern Control

Product | EVS7024/48S-R



- 64-bit high-performance multi-core processors, ensure the massive data processing stability
- Support SAS multiple cascade, external SAS interface bandwidth bi-directional 192Gbps, ensure the system storage capacity expansibility
- 24/48 HDDs in Single device, single system up to 240 HDDs, capacity up to 1440TB
- Up to 10-1000Mbps Ethernet ports, and 4-10000Mbps Ethernet ports
- Internal backboard bandwidth bi-directional 288Gbps
- Support 3.5 inch, 2.5inch SAS/SATA (1T、2T、3T、4T、6T). Support mixed different capacity HDDs
- Support HDD hot-swap, online replacement, online expand
- Support standard iSCSI protocol storage and video stream direct storage
- Under video stream direct storage mode, support 1536Mbps video storage
- Under video stream transmit mode, support 4096Mbps front-end access; 4096Mbps network transmit
- Under IPSAN working mode, storage bandwidth ≥ 3.6 Gbps
- Support RAID0、1、5、6、10、50、60、JBOD、hot standby, ensure the data storage safety

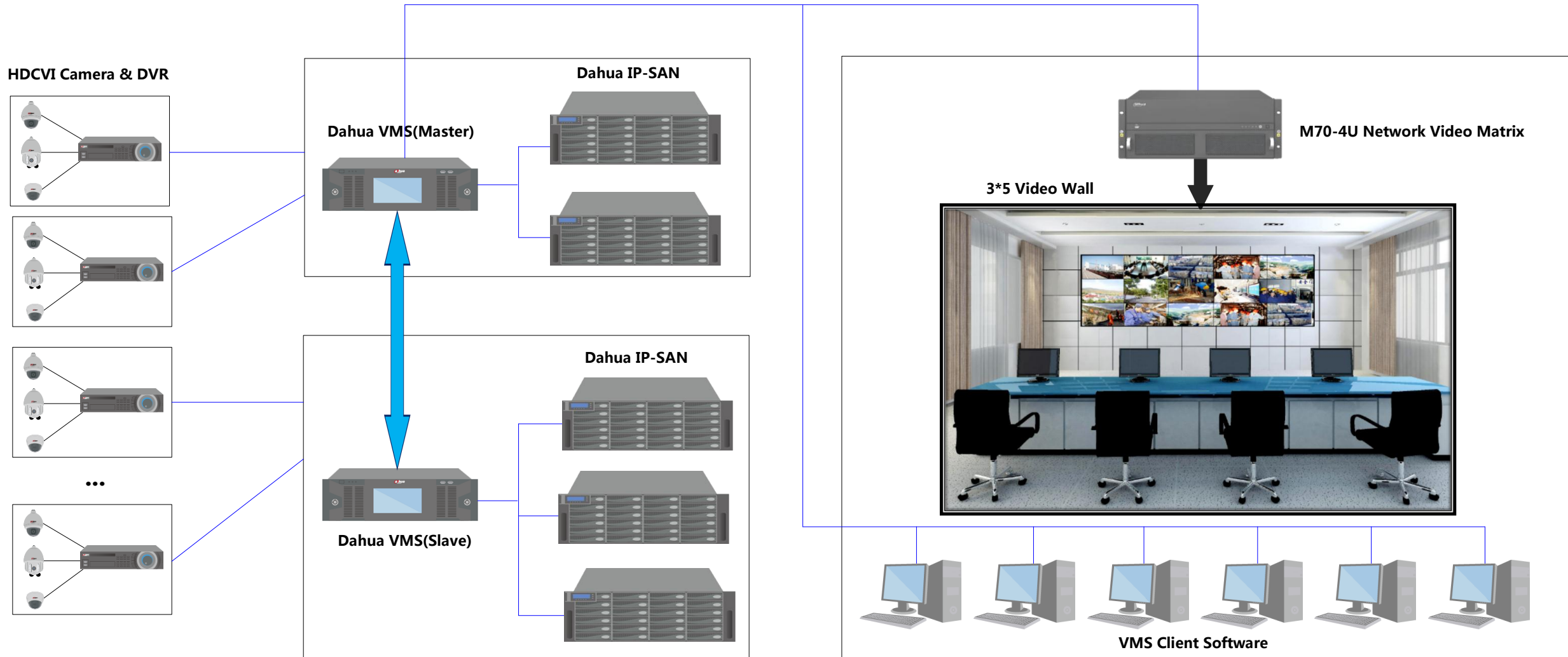
Successful Case | Lulu Hypermarket Surveillance Project



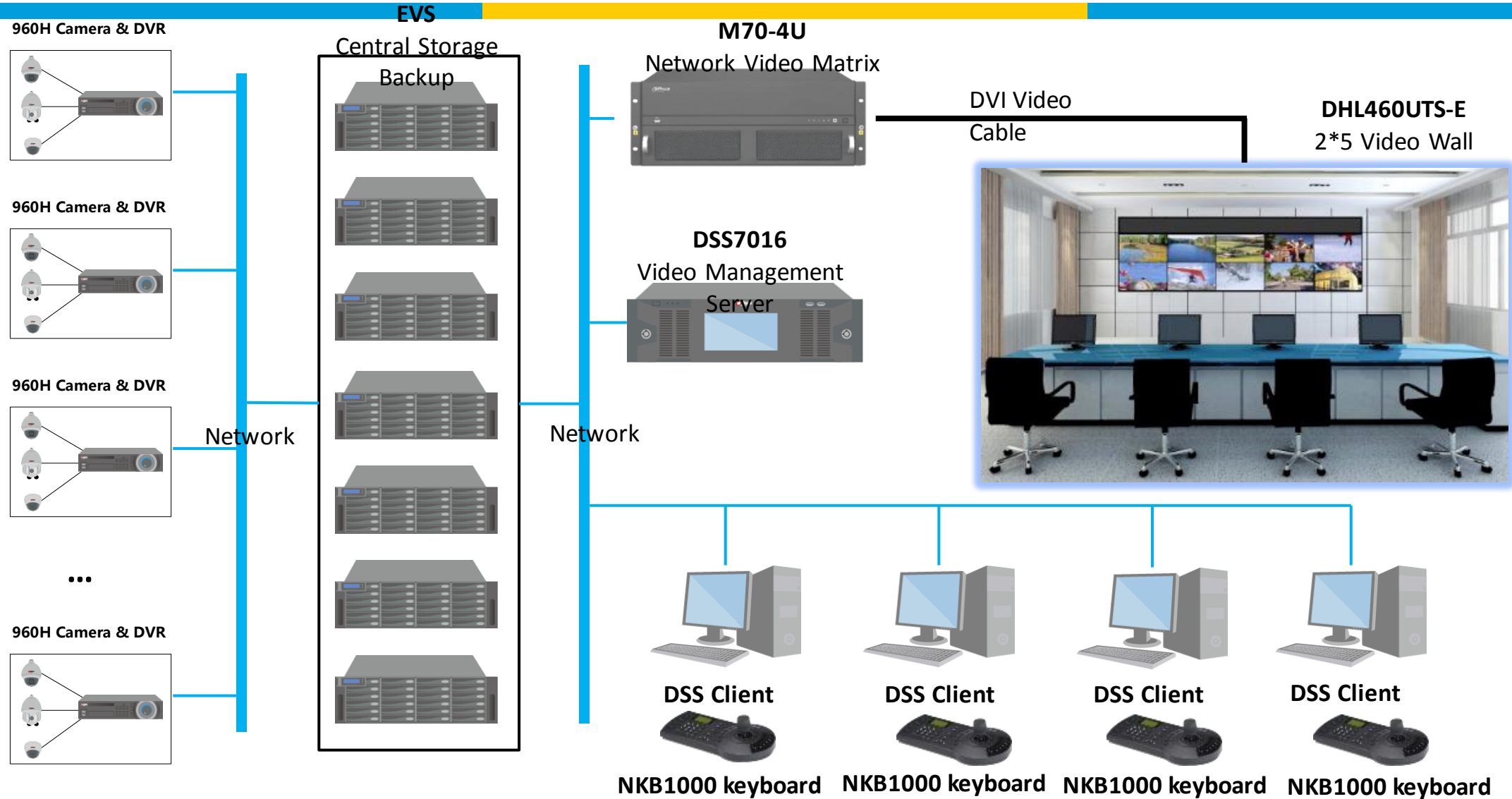
Lulu Hypermarket is a hypermarket chain and retail venture started by Lulu Group International in 2000. It has **over 30,000 employees** of various nationalities.

It is **one of the largest retail chains in Asia** and is the **biggest in Middle East** with 115 outlets in the Gulf Cooperation Council (GCC) countries and one in Kochi, Kerala, India. Research firm Deloitte, recently placed it amongst the world's 50 fastest growing retailers.

Successful Case | Lulu Hypermarket Surveillance Project



Successful Case | Mexico City Plaza Inn Surveillance



Successful Case | Mexico City Plaza Inn Surveillance





Thanks

<http://www.dahuasecurity.com>

