



DSS Introduction

V6.01.000

Catalog

1	Product Series
2	Functions Introduction
3	ADD-ON Business
4	DSS Deployment Characters
5	Industry Application
6	Success Cases

Name rule

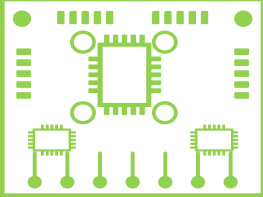
DSS	7	0	16	D	X	X
Product line name DSS	Product Form 7: Intel Core	Generation	HDD 16: 16HDD	D: LCD Screen	Function R: Redundant Power	Industry version -B: Basic -M: Mobile -T: Transport -H: House

DSS	4	0	04	X
Product line name DSS	Product Form 4: Intel Baytrial	Generation	HDD 04: 4HDD	Industry version -B: Basic -M: Mobile -T: Transport -H: House

DSS
Pure Software

DSS7016D/DSS4004

DSS7016D
Dss4004



Embedded



Linux



Disk



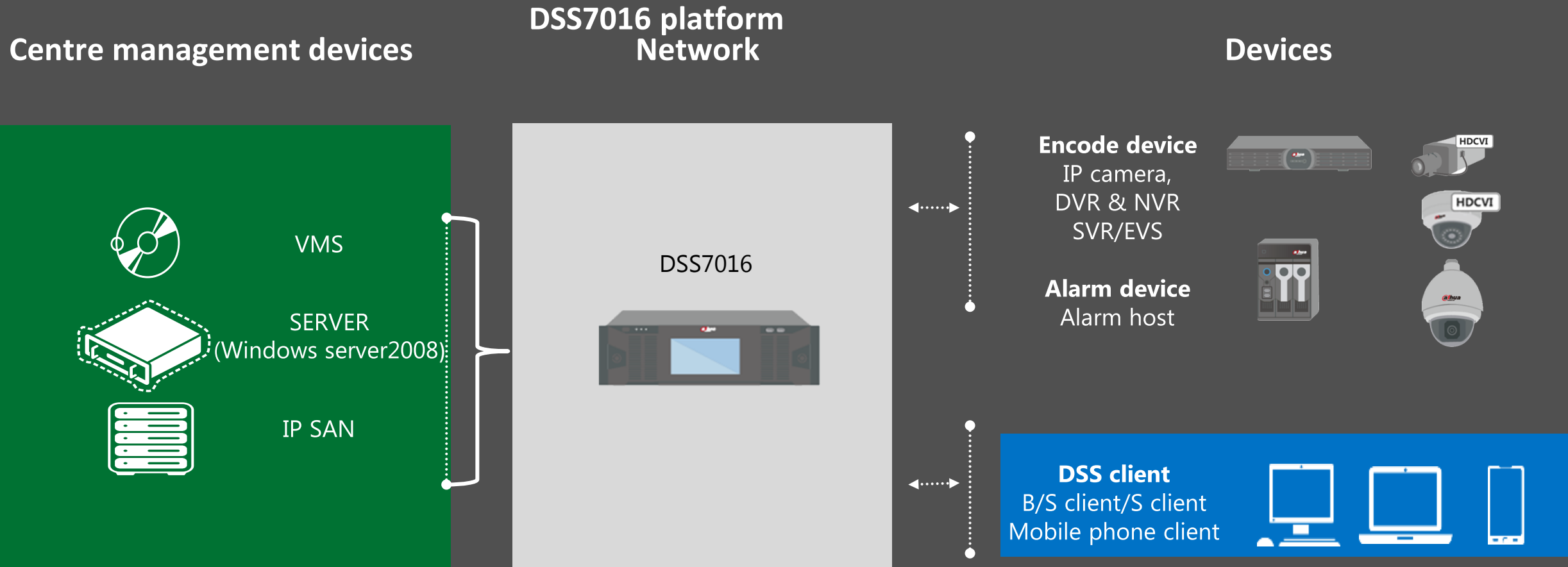
Mobile phone client



B/S and C/S client



DSS7016D



DSS7016D/DSS4004



Hardware costs



Software costs



Energy saving

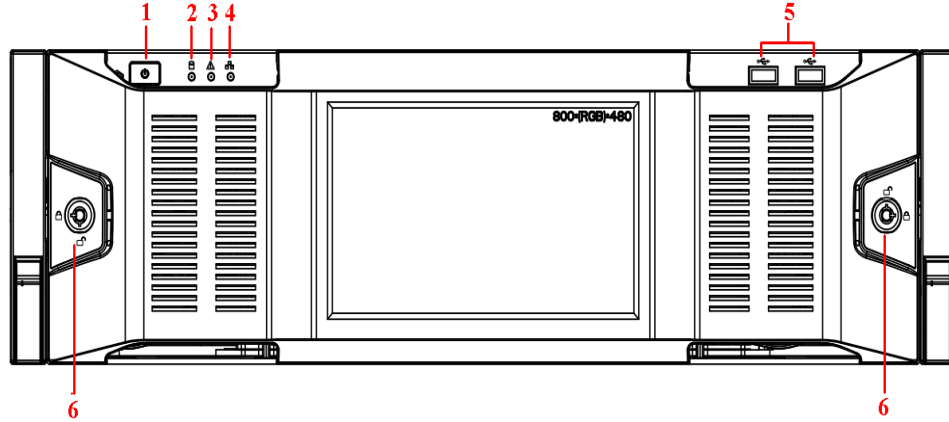
DSS7016D/DSS4004

Plug and play

- Power On, and according to “Quick wizard” to complete the initialization configuration.
- Relieve the series of complicated steps for installation of OS, software and database, to realize the real "plug and play“.

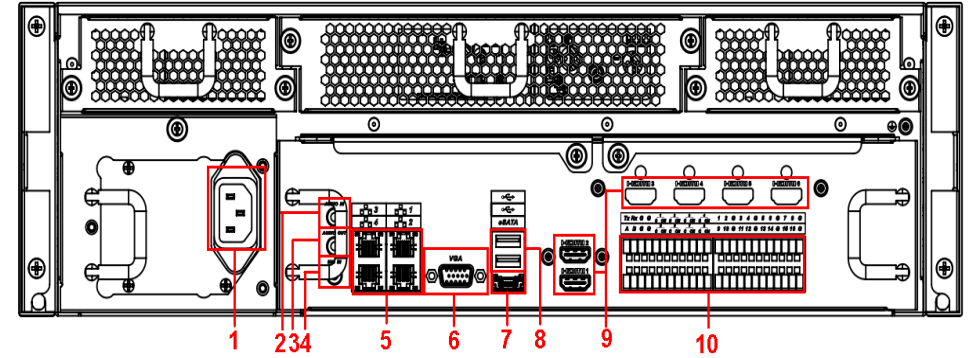


DSS7016D



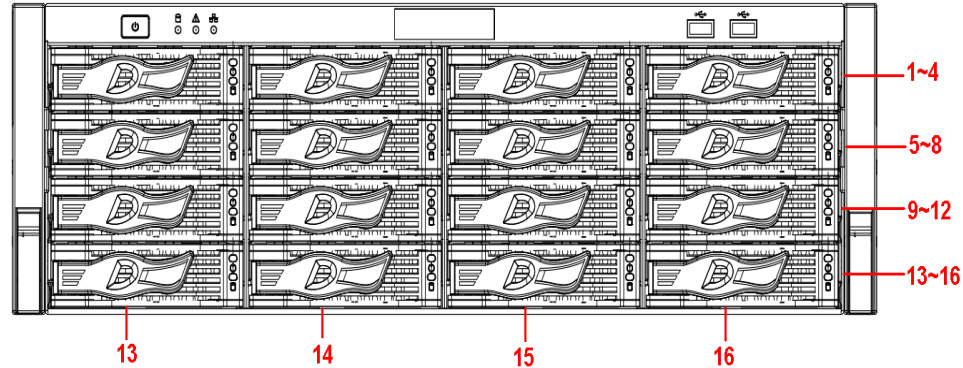
1-Power Button
2-System Indicator
3-Alarm Indicator

4-Net Indicator
5-USB
6-Front Panel Lock



1- Power Interface
5- Net Interface
6-VGA

8-USB
9-HDMI
10-RS485

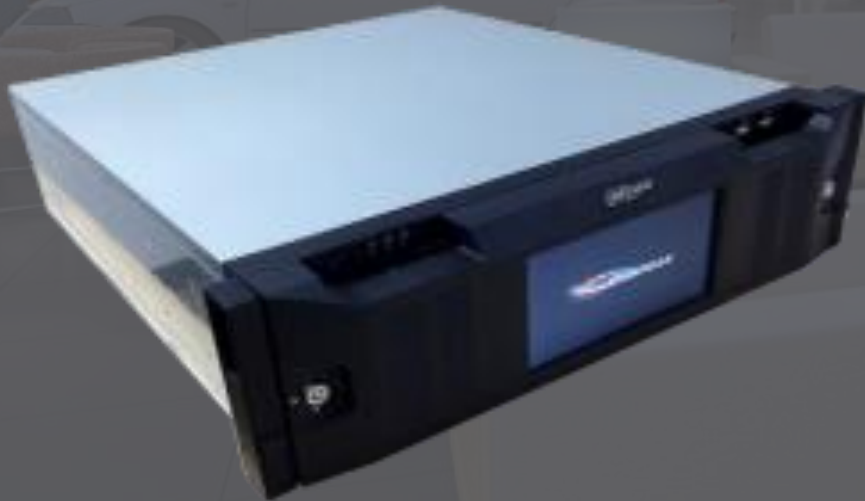


1-System HDD
2-16- Storage HDD

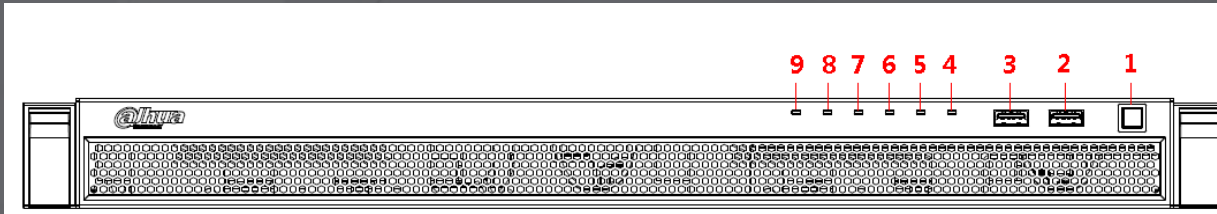
DSS7016D



- Embedded device, 30*24 stable operation
- High-performance stream media transfer and storage capability
- Support hot standby
- Support local storage and IP-SAN storage
- Support 20 distributes server and 5-level cascade
- Max support **2000 channels** (Max support **500 devices**)
- Support unlimited accounts management and **8000** online users
- Support **700M transfer** capability
- Support **700M local storage** capability
- E-map max displays 200-channel on one screen
- Process 1000-channel alarm per second.

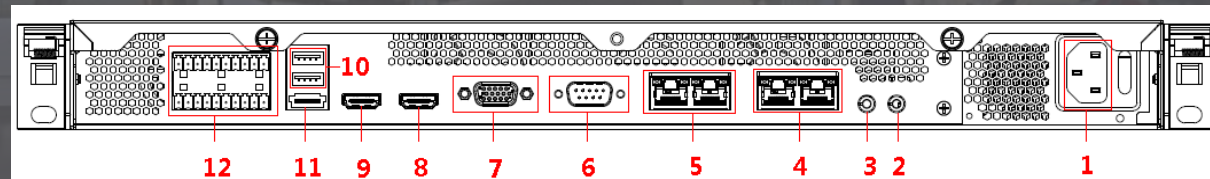


DSS4004



Front Panel

- | | | |
|-----------------|---------|----------------------|
| 1- Power Button | 4- HDD4 | 7- HDD1 |
| 2- USB3.0 | 5- HDD3 | 8- Alarm Indicator |
| 3- USB3.0 | 6- HDD2 | 9- Network Indicator |



Back Panel

- | | | | |
|--------------------|------------------------|---------------------|---------------------|
| 1- Power Interface | 4- Ethernet Port 1~2 | 7- Video VGA Output | 10- USB2.0×2 |
| 2- Audio Output | 5- Ethernet Port 3~4 | 8- HDMI1 | 11- eSATA Interface |
| 3- Audio Input | 6- RS232 Interconnects | 9- HDMI2 | 12- Alarm In & Out |

DSS4004



- Integrated design, lower combined cost
- Simple deployment, one-key upgrade
- Support hot standby
- Support local storage and IP-SAN storage
- Support 20 distributes server and 5-level cascade
- Support 200 IP devices and 1000 channels
- Support unlimited accounts management and 8000 online users
- Support 300M transfer capability
- Support 100M local storage capability
- E-map max displays 200-channel on one screen
- Process 1000-channel alarm per second.

DSS Pure Software

- **Operating System**

Centos 6.7 64-bit

- **Recommend Hardware**

Memory@8GB

System Disk@1TB

Ethernet port@1000Mbps

- **ISO File**

Pure software installed for the first time, need to burn the ISO file into U disk images file, then the server start from U disk and start the installation


- **Bin File**

After initial ISO installation, can upgrade the DSS version by “Configtool”, just like DSS7016D

- **License**

Through license control add-on module and channel num.



 General_DSS_PRO_Eng_Basic_V6.01.000.R.20160123.iso

 General_DSS_Eng_Basic_V6.01.000.R.20160123.tar.gz

What's the different between DSS and PSS?

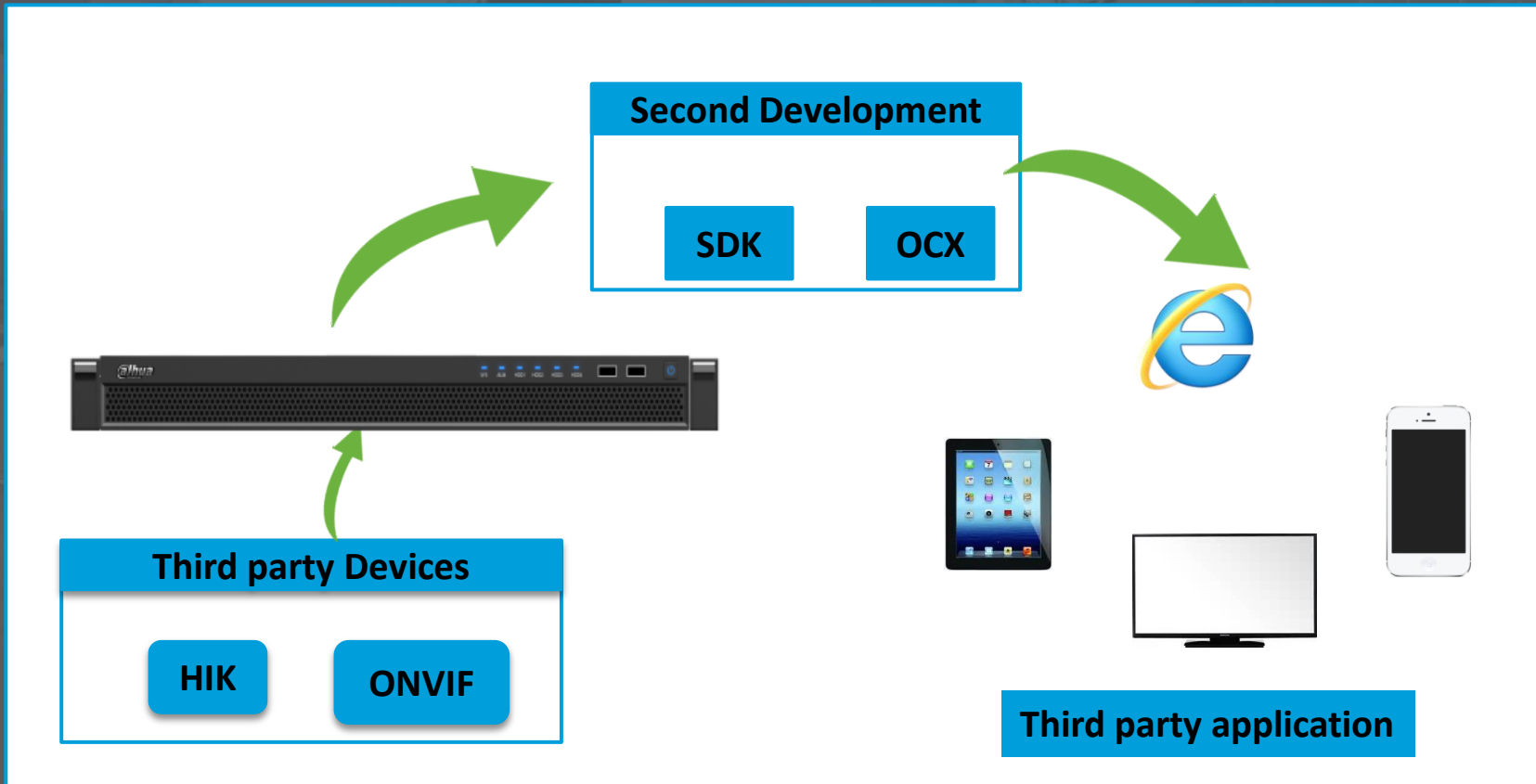
Key Parameters		DSS	Smart PSS
Device	Dahua Device	More than 250 Device and 1000 channels	256 devices , 2000 channels
	Auto Register	200↑IP	No
User Management	User Management	8000 online users	No
	Authority management	Support	No
Video Detect	Video quality diagnosis	Support	No
Client Access Simultaneously	Include TV Wall	Support	Limit by Device Bandwidth
Center Storage	Local	Support	PC NVR
	ISCSI	100Mbps	No
Scalability and stability		Support Distribute, Hot standby, N+M	No
EMAP		Raster、Google Online/Offline	Only Raster
Client	Whether you need configuration data repeat on each PC	No , only need to login by same account, all data storage in DSS Server	Yes
Mobile Client		DSS Mobile	No
Others		Mobile DVR, Intelligent Traffic, Retail, Intelligent Building, Parking Lot	V6.01.000

What's the different between DSS and PSS?

DSS	Smart PSS
Network integrated management mode	Local management mode
Transfer Mode, support up to 1000 online users	Direct Mode, supports only 10 users simultaneously access
Application integration and information integration, support alarm, access control,	Unable to integrate advanced application and information integration
Authority management	No authority management
Scalability and Stability	
Unified management of whole system resources	Can not effectively solve the problem of resource conflict

Open Third party

- Open platform SDK, Support partners to develop their own business and Applications. Support windows, IOS, and android platform.
- Support ONVIF devices, third party equipment (HIK).



Main Function

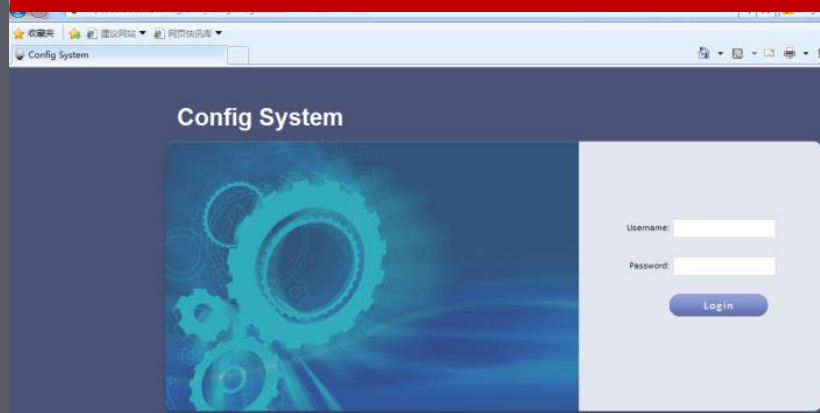
- Get Organization
- Live View: snapshot, local record, PTZ
- Playback: search, play, download
- Alarm: search, open/close alarm
- Audio talk
- TV Wall: get TV Wall case and info, operator the TV Wall

Catalog

1	Product Series
2	Functions Introduction
3	ADD-ON Business
4	DSS Deployment Characters
5	Industry Application
6	Success Cases

DSS COMPONENT

CONFIG SYSTEM



<http://ip/config>

WEB



http://ip

WEB Client

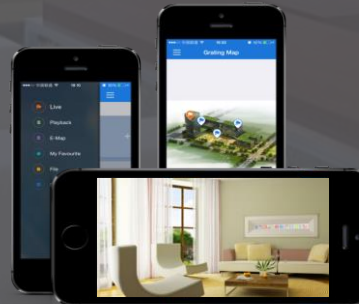


http://ip , login by operator

PC Client

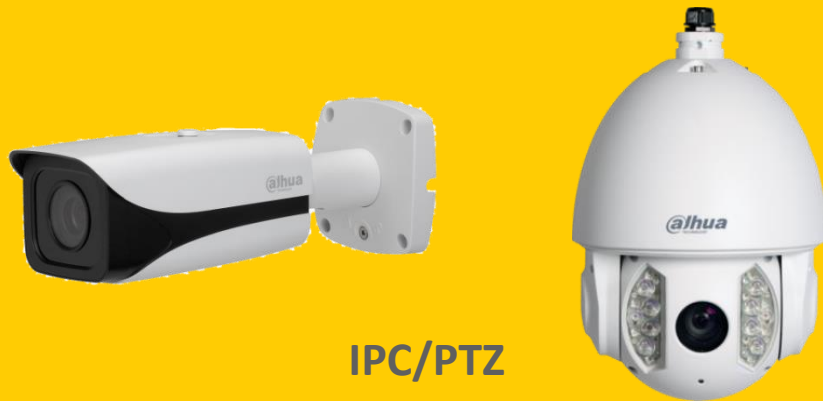


DSS Mobile





Fisheye



IPC/PTZ



NVR



IVS

Device Management



Alarm Host



Controller & Keyboard

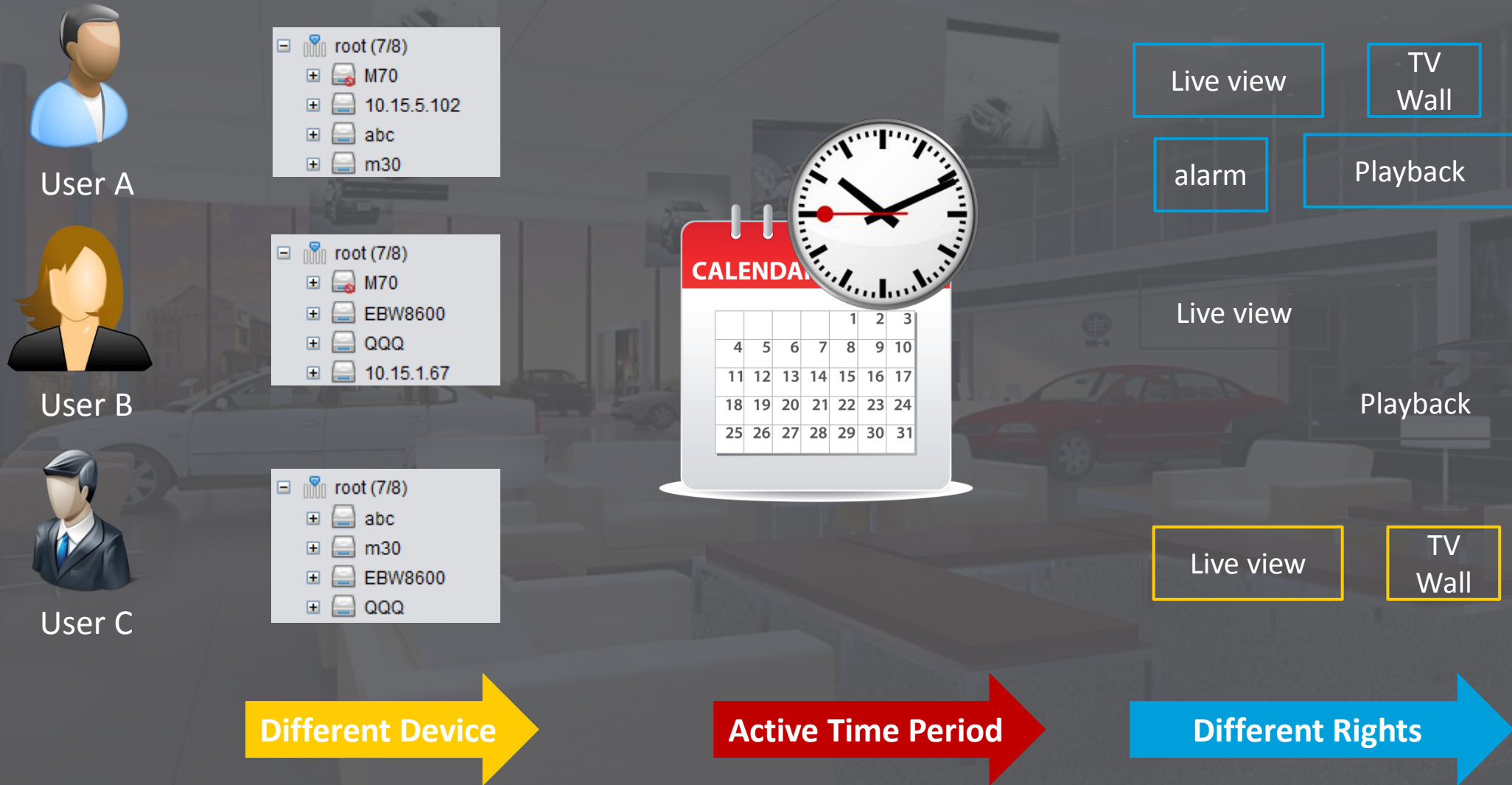


Third-party devices(ONVIF, HIK)



Access Control

Authority Management



User Login Limit

➤ MAC address limit

Edit User

Compulsive Info

Username:MAC

☒ Reusable

Organization:root

*

Role:test,admin,CSS,adminA

Hide

⌵

Extension Info

Full Name:

*

ID No.:

(Refers to any ID.)

Email:

Telephone:

Valid Date:

Valid Period:

MAC Check:

☒ (Only Support Client)

MAC Address:11:12:13:14:15:16

(MAC Format: XX:XX:XX:XX:XX:XX)*

Memo:

DSS

Digital Surveillance System

User Name:MAC

Password:

☒ Remember

☐ Auto Login

Login

Exit

Login failed-Invalid MAC address

Server

▼

User Login Limit

➤ Active period limit

Add User

Compulsive Info

Username:time

☐ Reusable

Organization:root

New Password:●●●●●●●●

Confirm:●●●●●●●●

Role:test,admin,CSS,adminA

Hide

Extension Info

Full Name:time

ID No.:

(Refers to any ID.)

Email:

Telephone:

Valid Date:2015-12-04 - 2015-12-05

Valid Period:14:48:00 - 15:50:00

MAC Check:☐ (Only Support Client)

Memo:

DSS

Digital Surveillance System

User Name:time

Password:

☒ Remember

☐ Auto Login

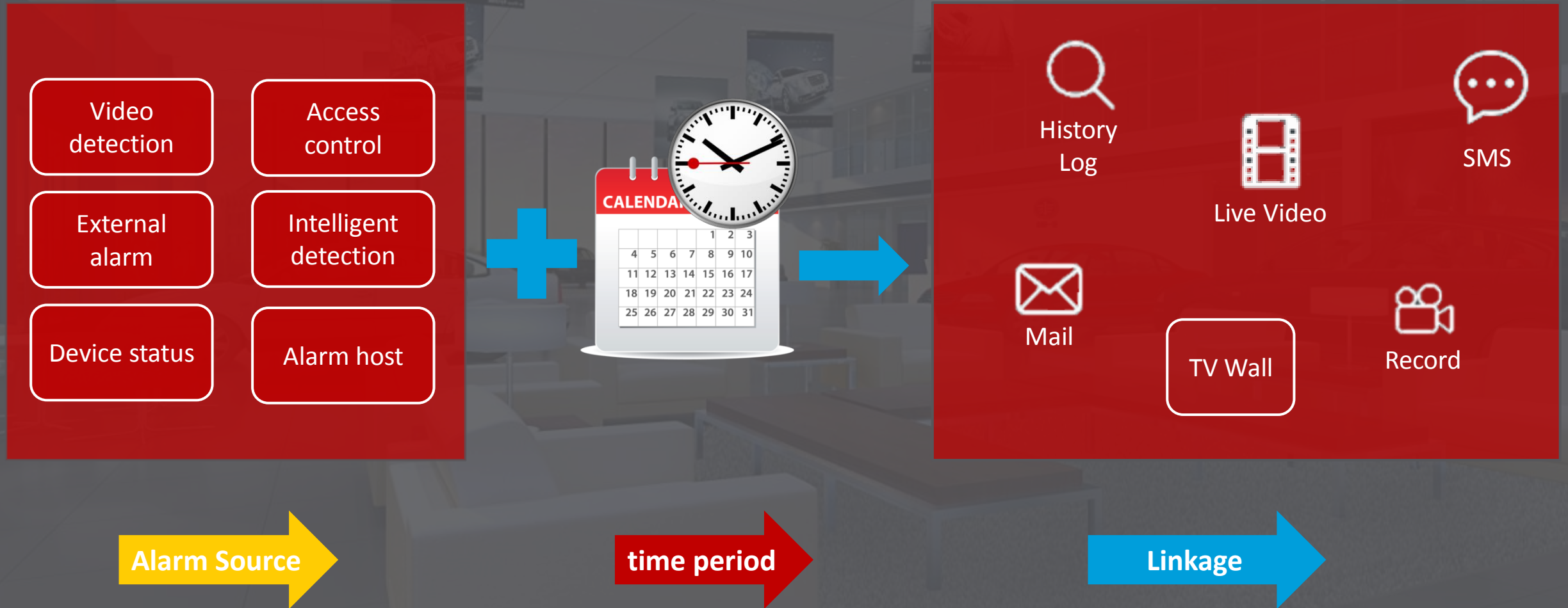
Login

Exit

Login failed-Not within validity

Server

Alarm Management



Storage Solution

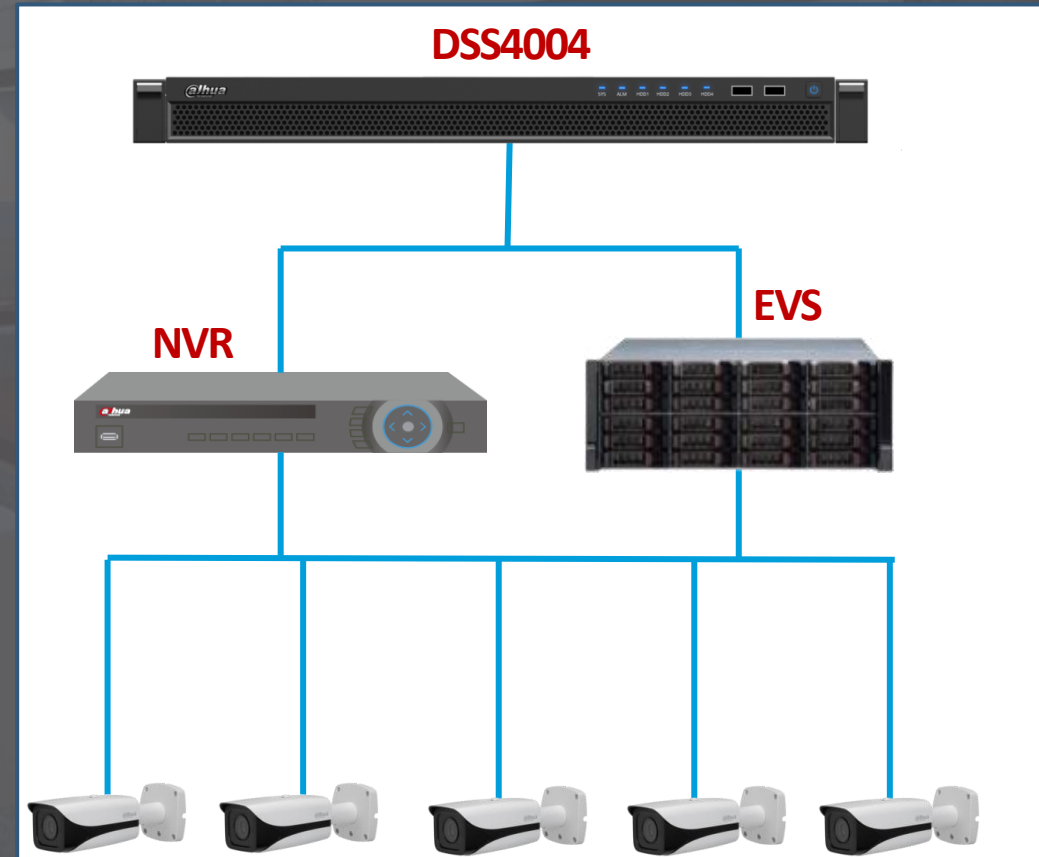
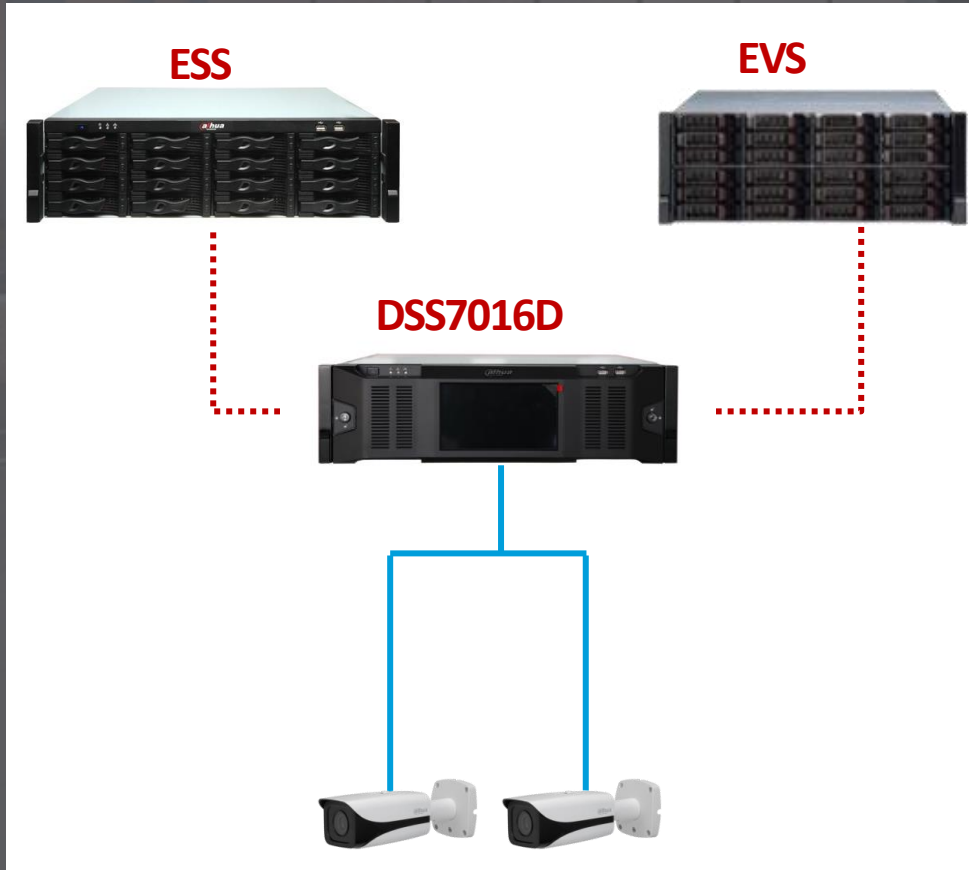
1. DSS Local Storage): Storage the video or picture in DSS local HDD.
2. iSCSI extension: Connect to ESS or EVS storage by iSCSI protocol, use IPSAN to release storage extension



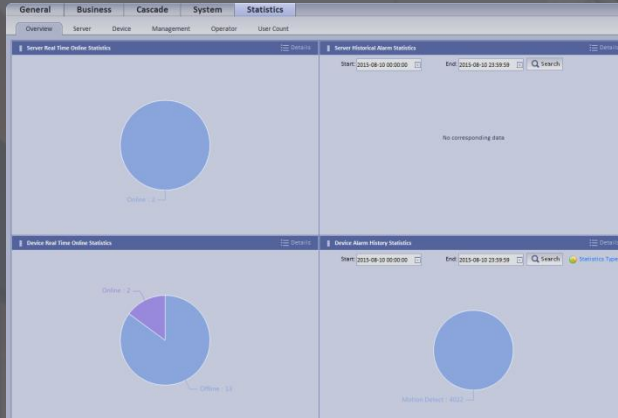
Time Plan Storage



Alarm Storage

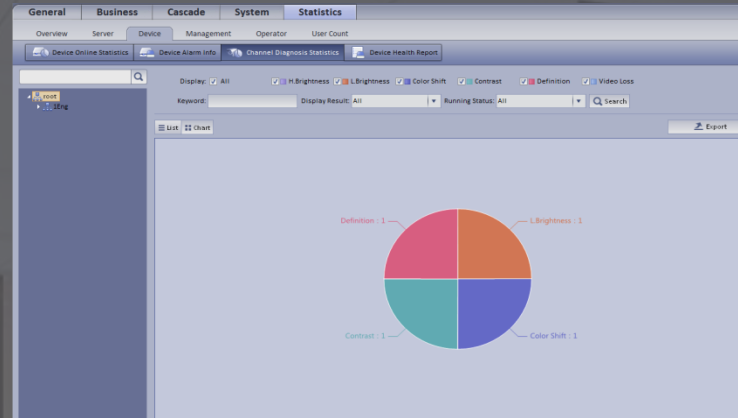


Statistics



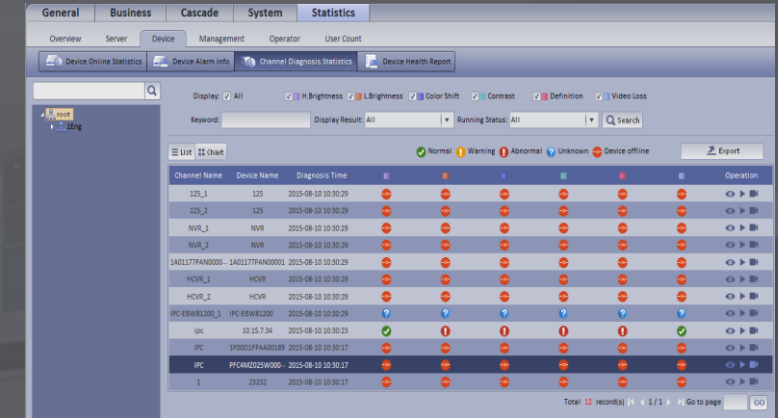
Servers information

- online status
- alarm status(high temperature, server status change)



Device information

- online status
- alarm status(all device and channel alarm)



video quality diagnosis

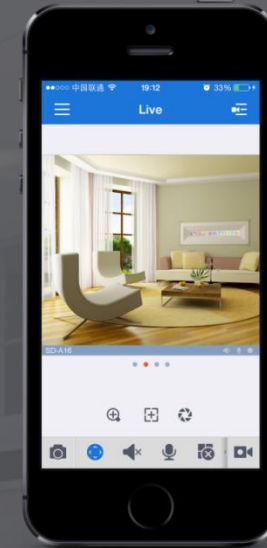
- High Brightness\Low Brightness\Colorshift\Contrast\Definition\Video Loss



BRIEF

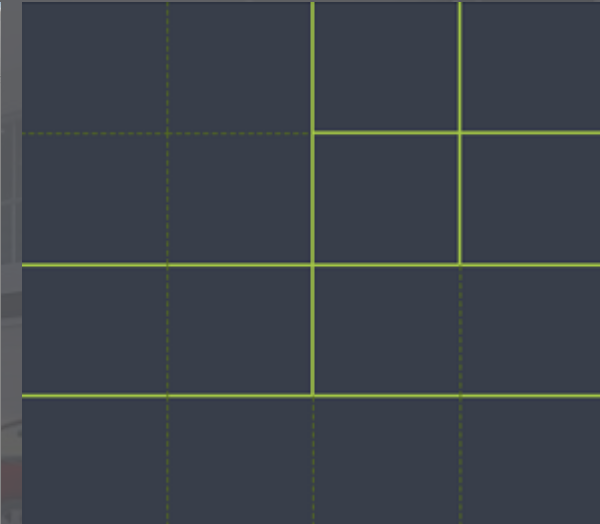
- Manager can find server or device abnormal and solve it on time.

Preview



- Real Time Monitor, Manual Record, manual Snapshot
- If device type is PTZ, then you can click on PTZ tab in the interface to set PTZ
- You can set tour task to achieve tour over several windows.
- Add channel to Favorite which you will monitor usually, so it can be open more easier when you need.

Customized Layout



- Customize any layouts you want, support up to **64 windows**.
- show videos with different aspect ratios: **4:3, 16:9, panorama**.

Fisheye



- Several "normal" flat images are obtained for display on the client screen
- Several View modes can be choose.
- Support fisheye calibration.

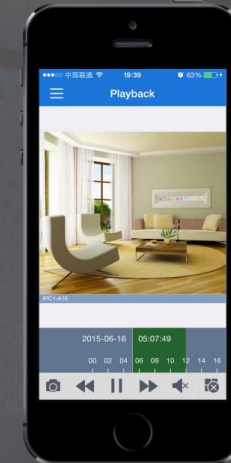


Note

*Play back does not support fisheye calibration

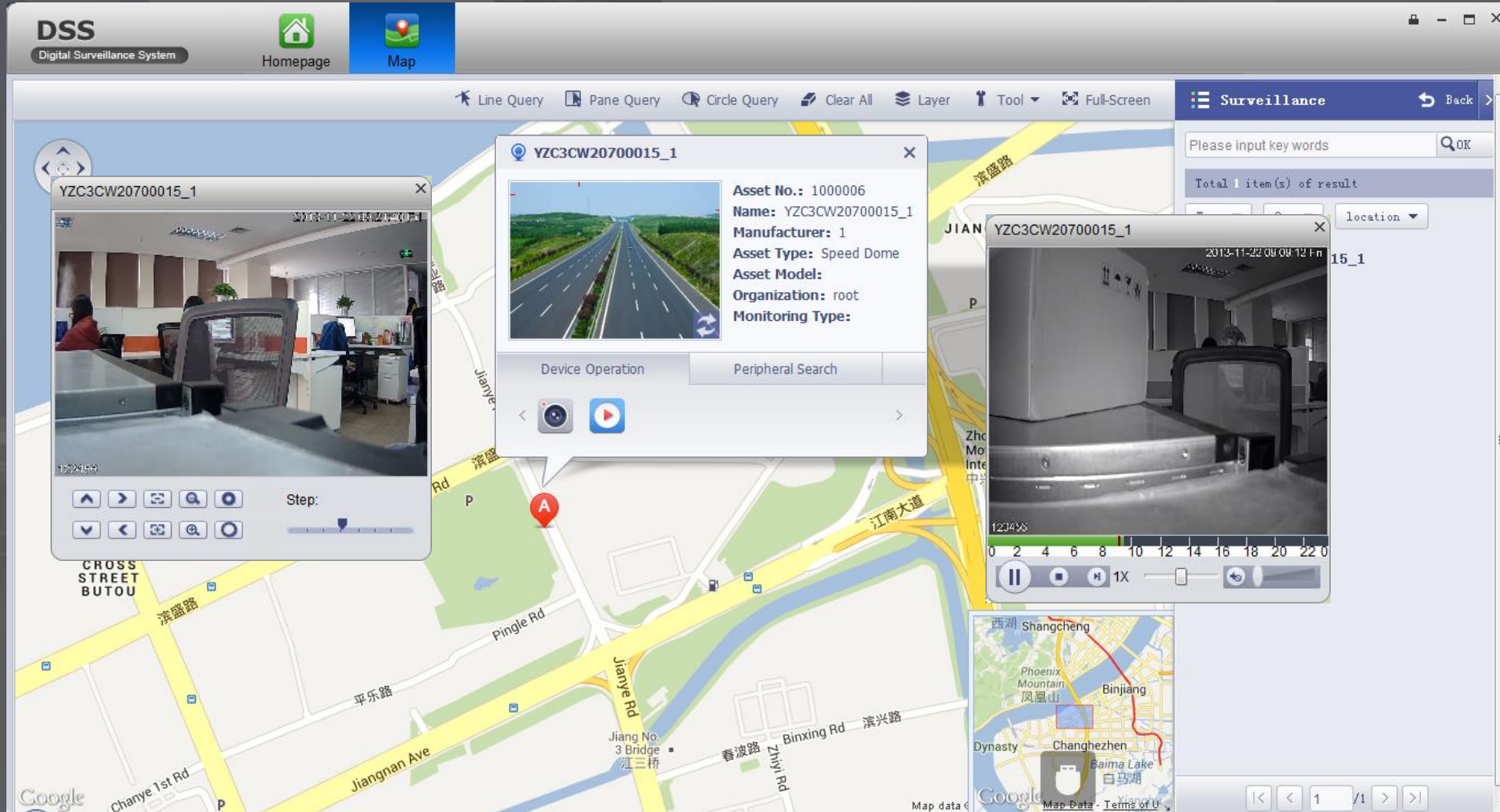
Playback

- You can search different channel, time, and types of record, and play the record.
- Support **sync play**, you can play records from different channels at the same time. Support up to 16 channels.
- Drag to any time you want to play through timeline pane. And support zoom in and zoom out.
- Support **Lock and Mark records**.

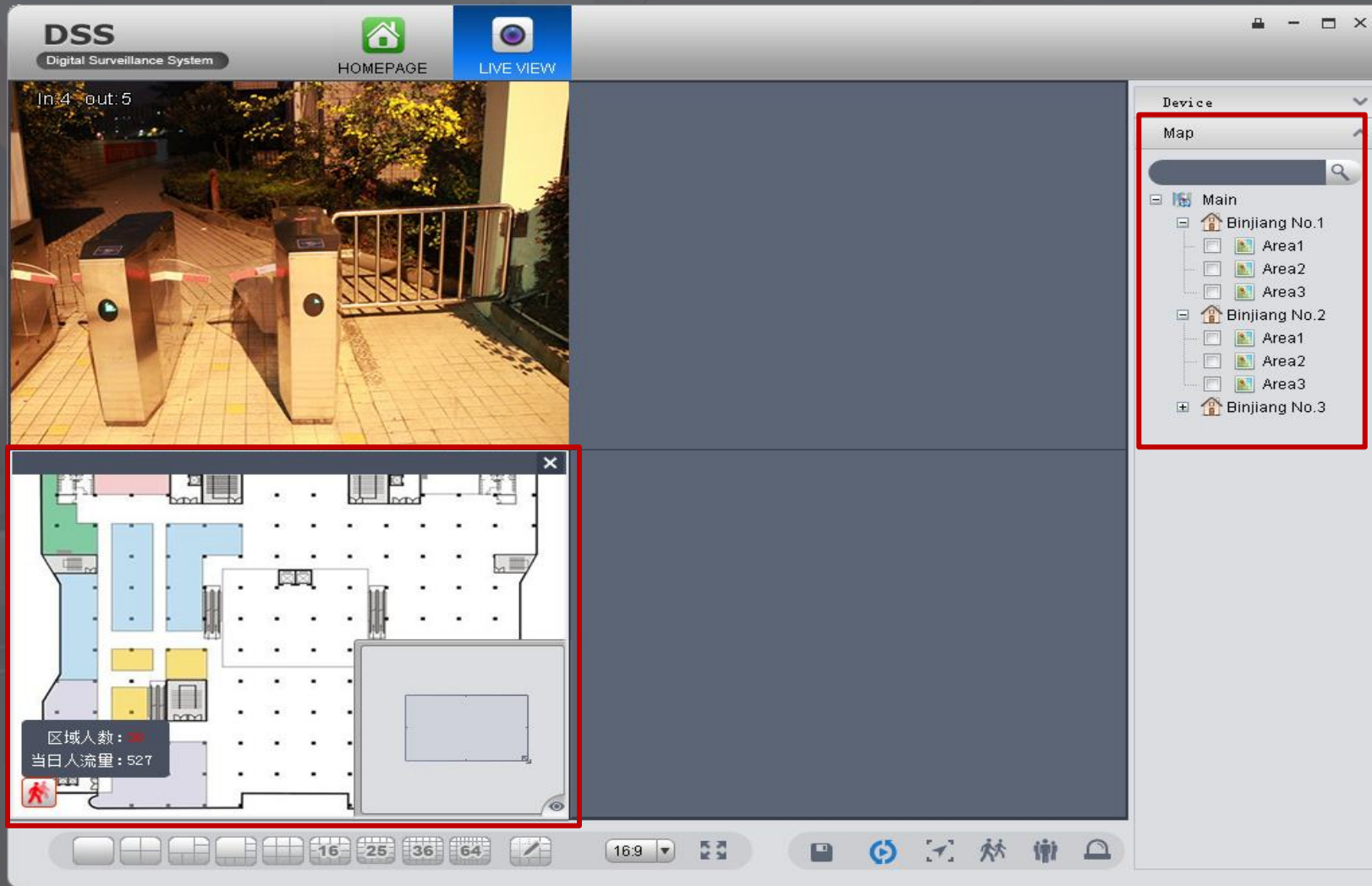


Emap

- Supports video channel and alarm channel display on map
- Support video monitor and playback.
- Support **Google Map**, **Raster Map**
- Support alarm flash



E-MAP and Preview



- After add map resources on web, the client will show map list simultaneously in preview interface.
- Can drag the map to the preview window, can close manually.
- Can double click or drag the video on the map to the corresponding window and preview

Audio Talk & Broadcast

The left screenshot shows the 'Audio Talk' mode. The interface includes a top bar with 'DSS Digital Surveillance System', 'Homepage', 'Audio Talk', and 'Preview(1)'. The main area displays a video feed of an 'IP PTZ Dome' camera. The bottom status bar shows 'Device IP: 10.15.5.109', 'Device Name: QQQ', and 'Audio Talk is in process.' A red callout labeled 'Audio Talk' points to the microphone icon in the bottom right corner.

The right screenshot shows the 'Broadcast' mode. The interface is similar, but the 'Broadcast' tab is selected. The main area displays a video feed of the same 'IP PTZ Dome' camera. Below the video feed, a 'Broadcast List' table is visible, outlined in red. The table has columns for SN, Device Name, Position, Device Type, Status, and Audio. A red callout labeled 'Broadcast' points to the speaker icon in the bottom right corner.

SN	Device Name	Position	Device Type	Status	Audio
1	10.15.6.86	10.15.6.86	IPC	Enable	<input type="checkbox"/>
2	10.15.1.67	10.15.1.67	DVR	Failed to open	<input type="checkbox"/>
3	EBW8600	10.15.5.99	DVR	Enable	<input type="checkbox"/>
4	QQQ	10.15.5.109	DVR	Enable	<input type="checkbox"/>

- Audio talk allows Client to talk to a single front-end device.
- Broadcast allows the Client to broadcast with multiple front-end devices.

Tripwire & Intrusion

Tripwire



It is to detect if there is any object crossing the warning line, it can support different direction selection, such as A->B, B->A and bidirectional, and it can activate record, snapshot and alarm according to the judgment result.

It is to detect if there is any object entering or leaving the area, it will trigger rule when crossing the area perimeter, support enter, leave and enter&leave three direction selection, it can activate record, snapshot and alarm according to the judgment result.

Intrusion

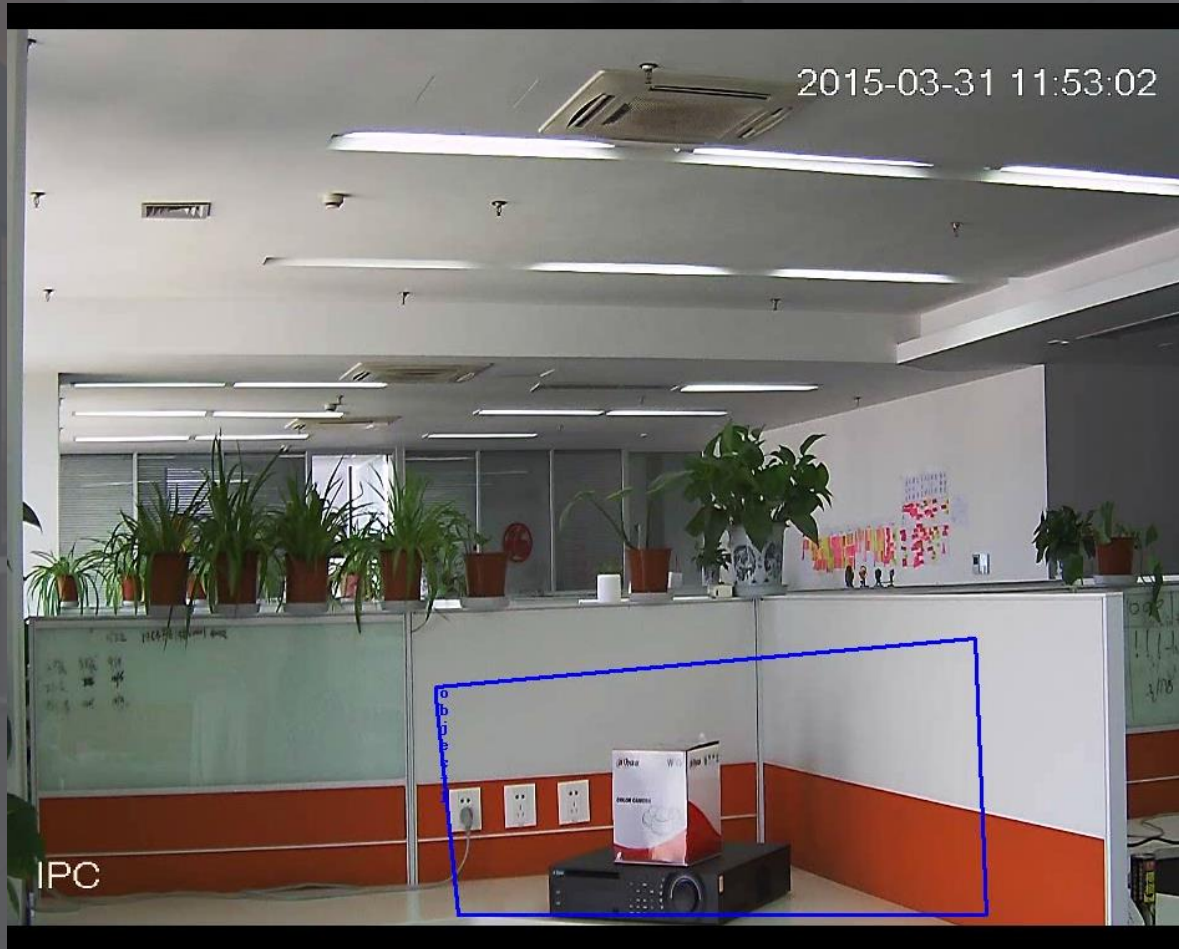


Note

* All intelligent functions on DSS need to connect Smart IPC or IVS server, Smart IPC just send the video analysis result to DSS as an alarm

V6.01.000

Object Abandoned / Missing



Object abandoned means that it is to detect if there is any object abandoned in the designated detection area and surpass the set time. It will activate record, snapshot and alarm according to the judgment result.

Object missing means that it is to detect if there is any object moved in the designated area and surpass the set time. It will activate record, snapshot and alarm according to the judgment result.

Access Control Solution



- Bind access control with video, then you can open video in access control interface in client.
- Alarm management, support several alarm type.
- Remote Control open and close the door. And show the alarm info.

Alarm Host

Wireless PIR



Wireless Door/Window Contact



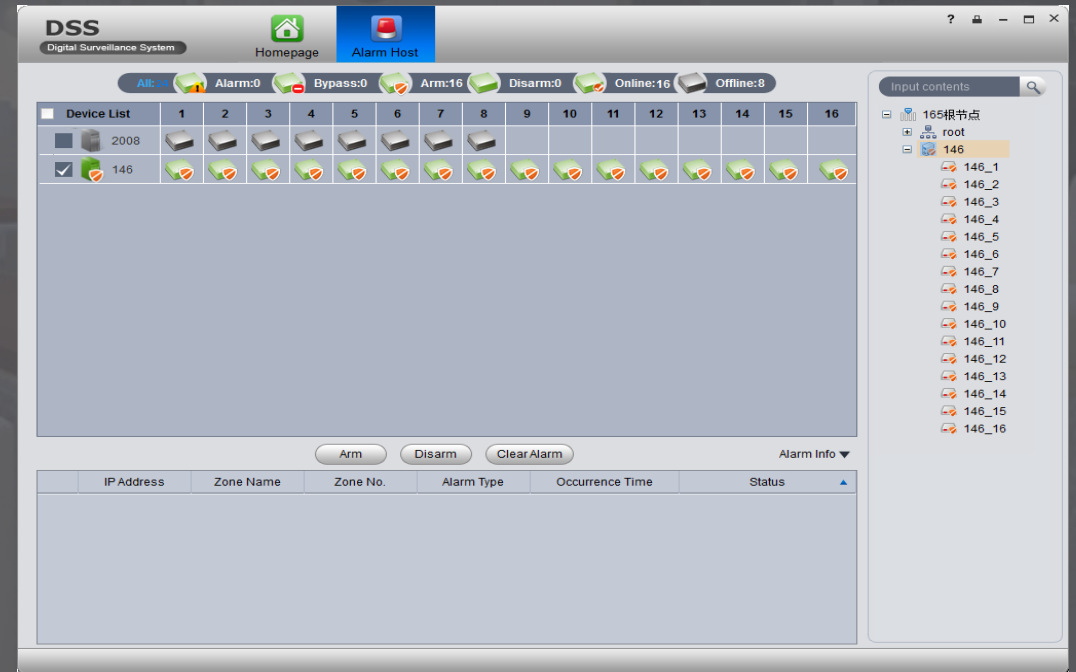
Camera



  
Arm/Disarm Alarm Monitor

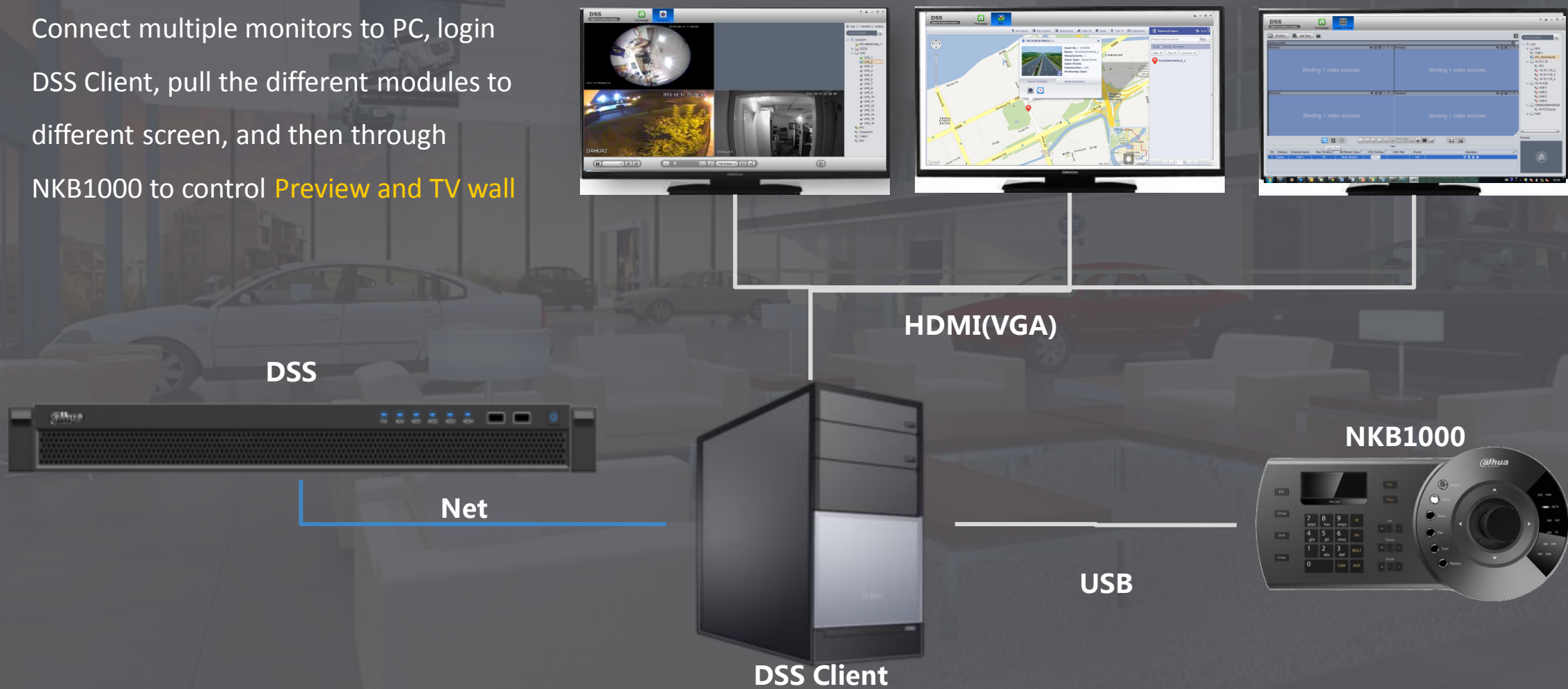


DSS

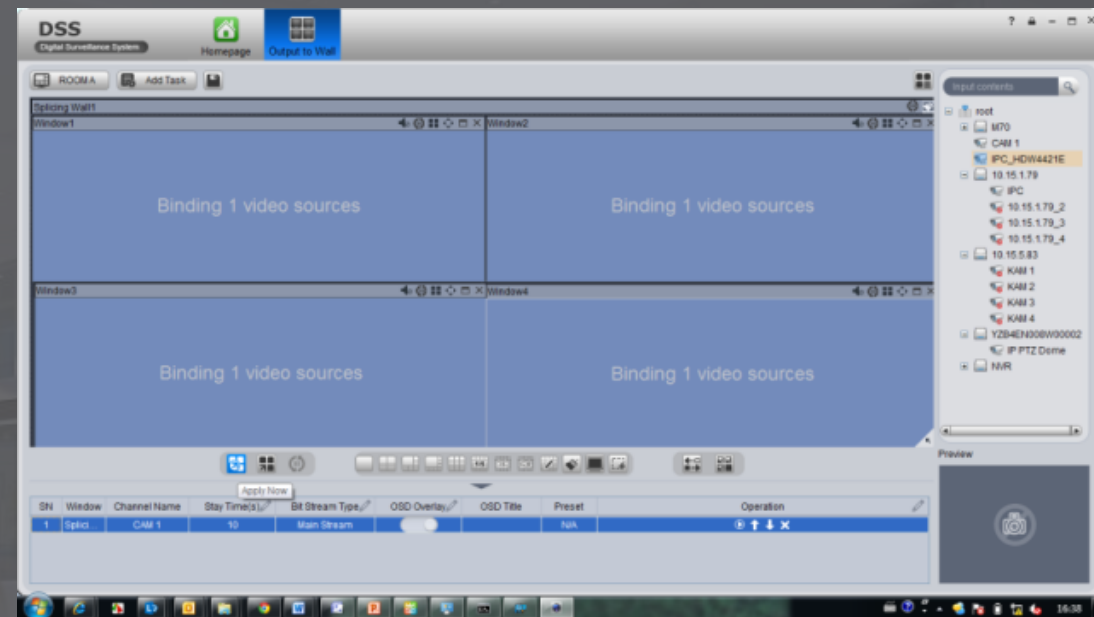


TV WALL (Small)

Connect multiple monitors to PC, login DSS Client, pull the different modules to different screen, and then through NKB1000 to control **Preview and TV wall**



TV WALL (Middle-Large)



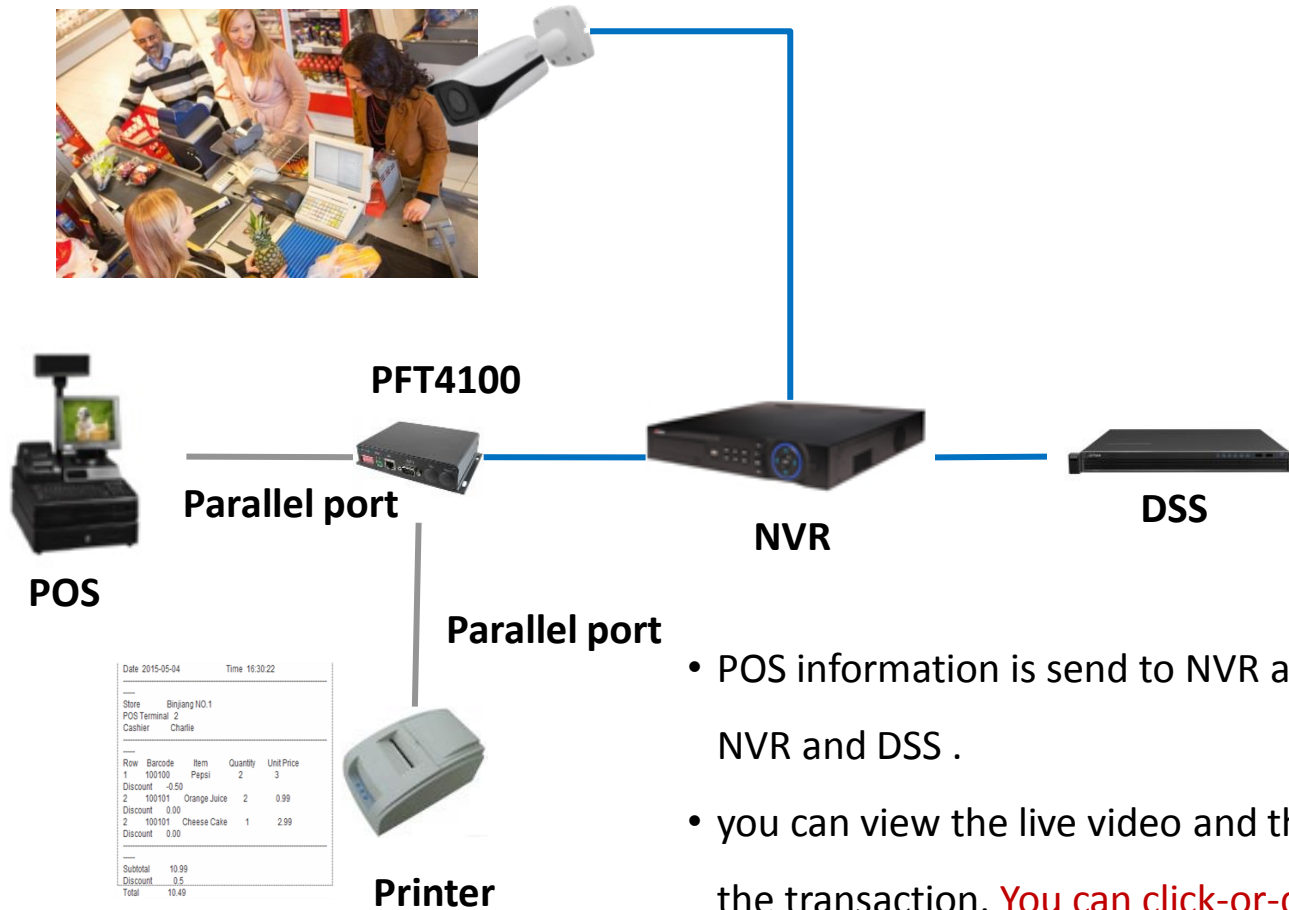
Note

*Does not support playback on the TV WALL

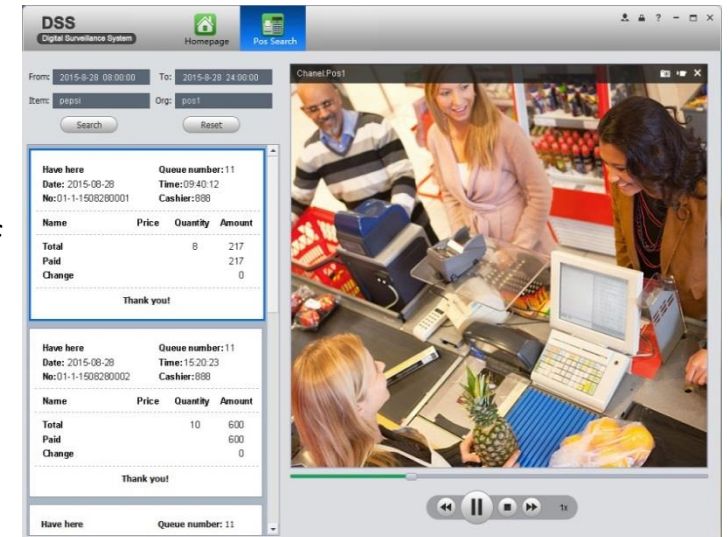
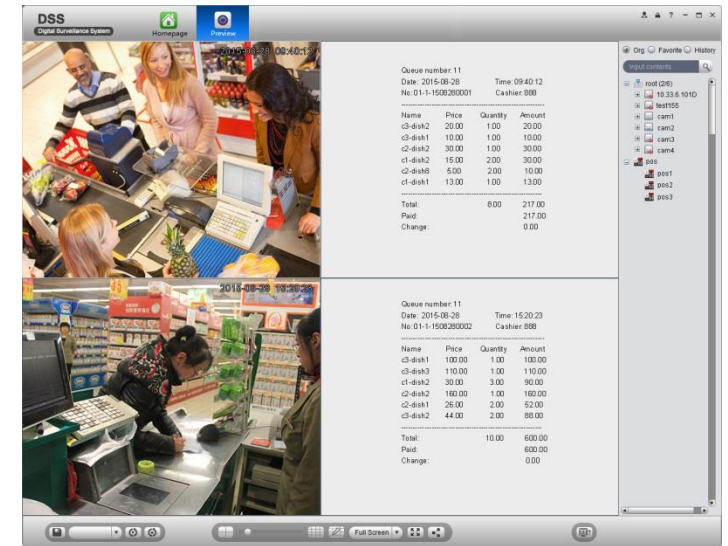
Catalog

1	Product Series
2	Functions Introduction
3	ADD-ON Business
4	DSS Deployment Characters
5	Industry Application
6	Success Cases

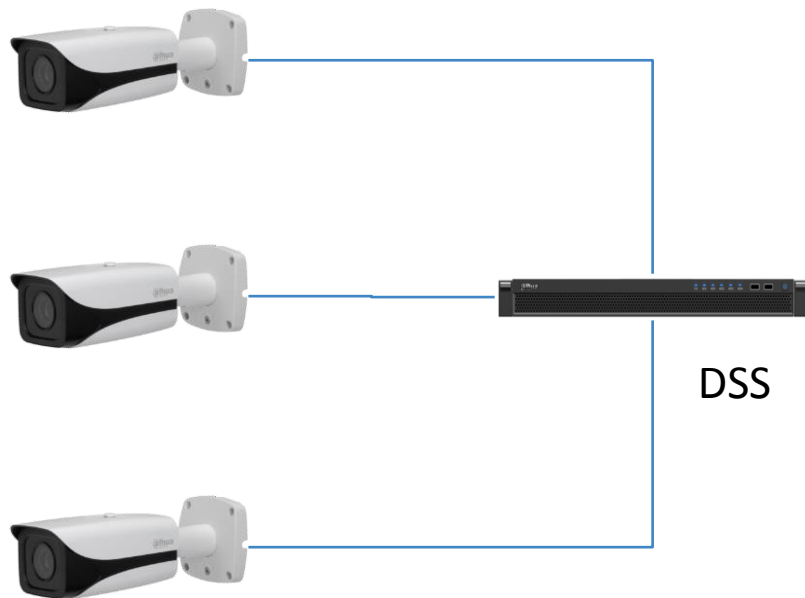
POS



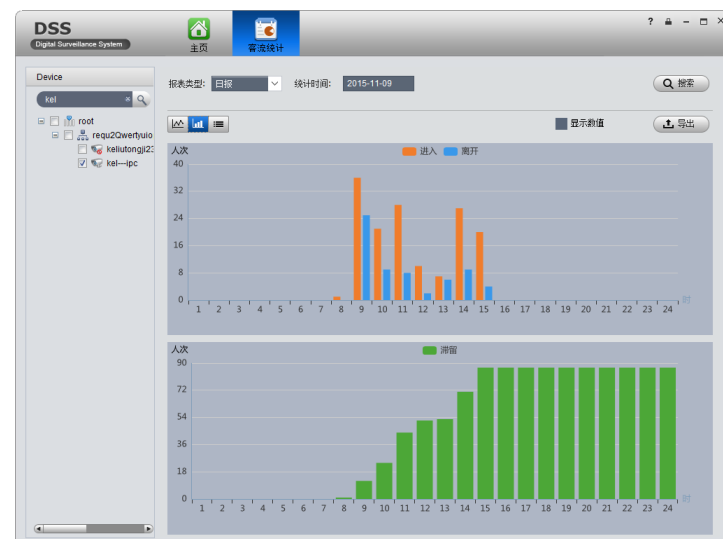
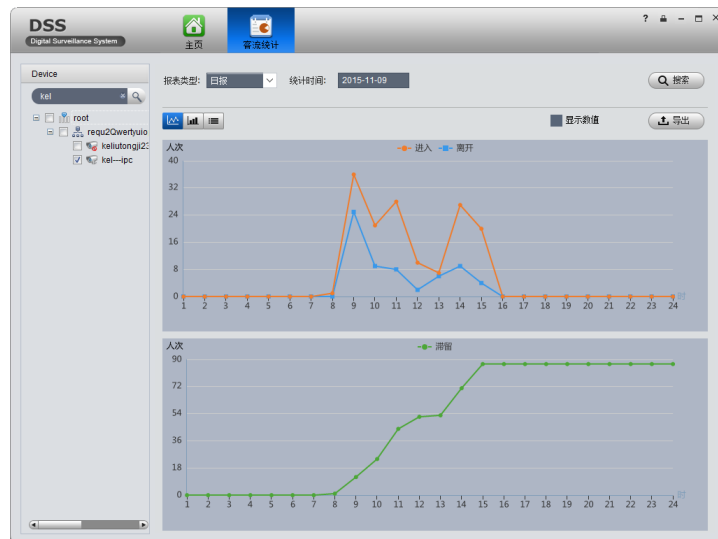
- POS information is send to NVR and DSS and stored in NVR and DSS .
- you can view the live video and the POS information of the transaction, **You can click-or-drag the POS terminal in live view to window if needed.**
- You can search the POS information and play the related record files.



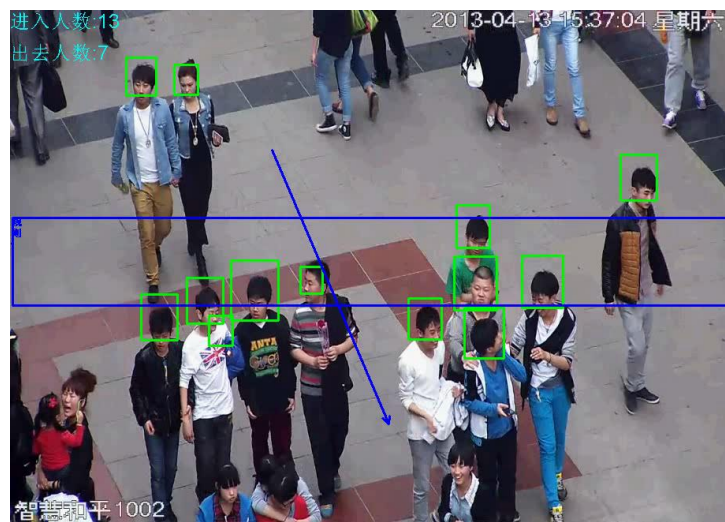
People Counting



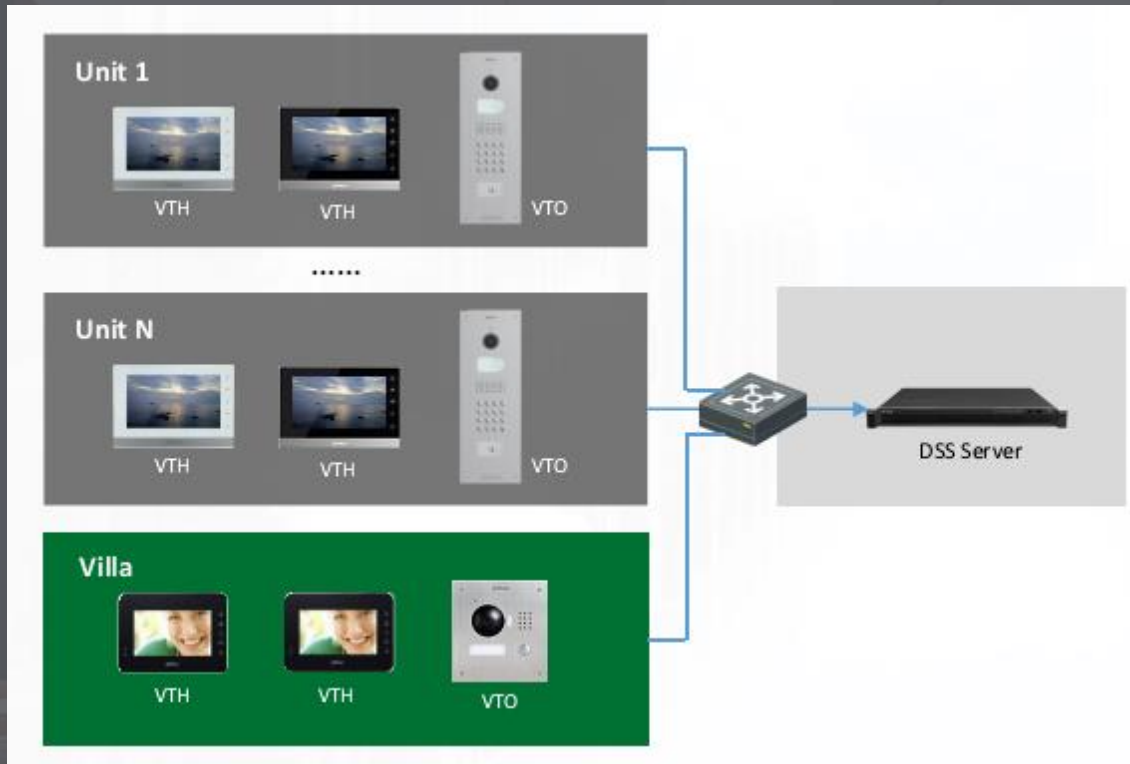
Smart IPC



It is to make **statistics of enter and leave people in the specific area** of the image, and finally it comes out the statistics data, providing kinds of data reports such as daily report, monthly report and annual report. There are two ways to present: **line chart and histogram**, providing data exporting function.



Video Intercom Integration



Video Intercom

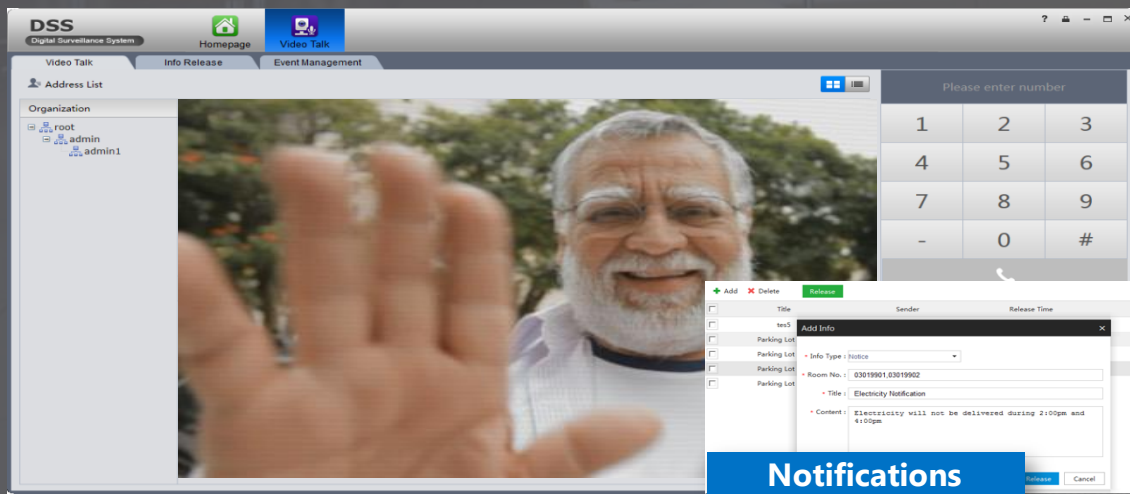
- Video call between control center and outdoor station
- Audio call between control center and indoor monitor
- Control the access of outdoor station remotely

Push Notification

- Push notification such as advertisements, daily news and delivery notice from control center to indoor monitors

Alarm Management

- Alerts along with link video will be sent to the control center for emergency handling once an alarm is triggered by any sensor connected to indoor monitors



***SIP-based communication, the SIP server is integrated in the DSS. Don't support WLAN Mapping**

Catalog

1	Product Series
2	Functions Introduction
3	ADD-ON Business
4	DSS Deployment Characters
5	Industry Application
6	Success Cases

WAN Mapping

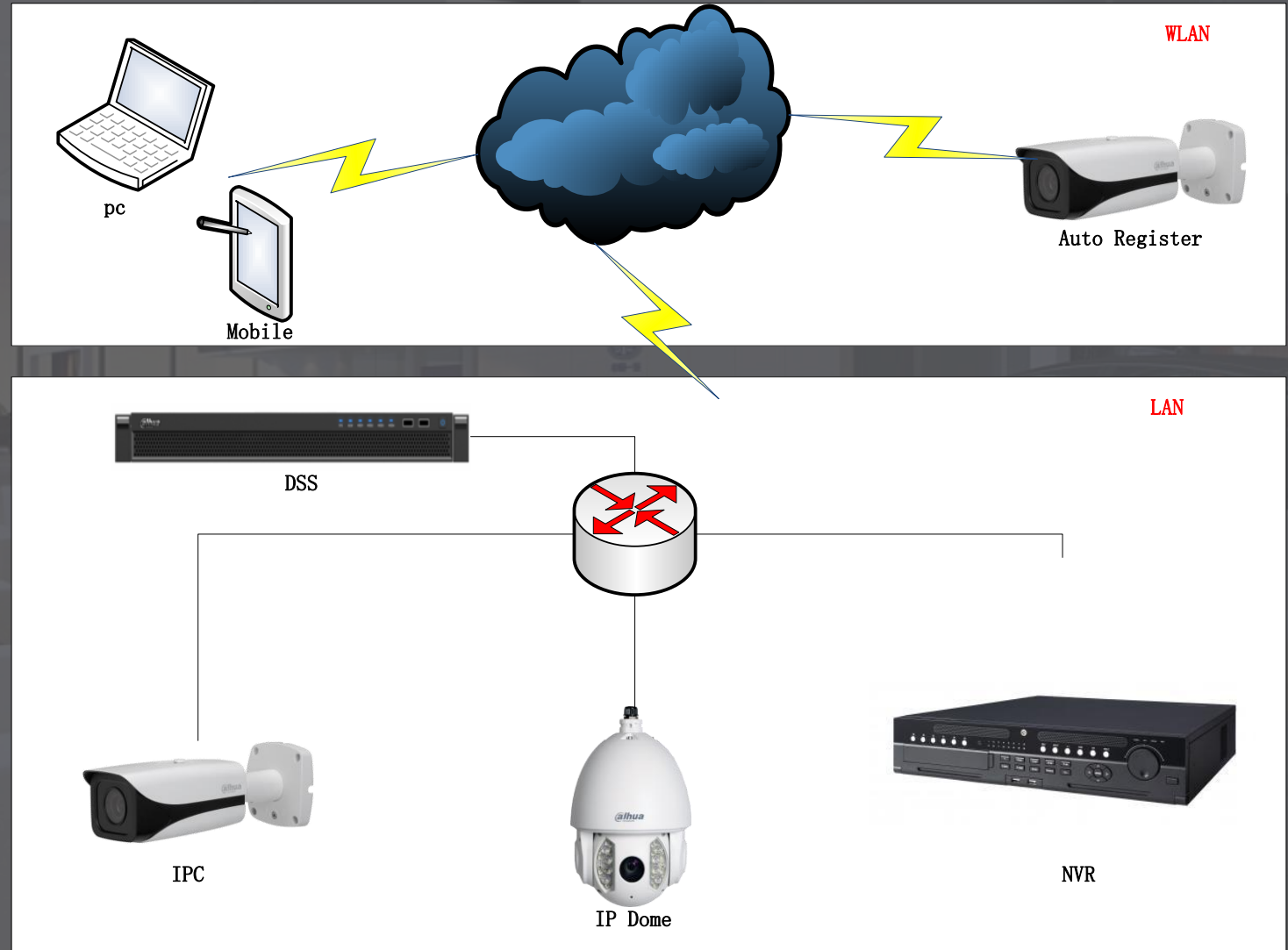
If you want access the DSS, and hasn't Fixed WLAN IP, you can use router to do WAN Mapping, then you can access the DSS from public net.

- **Port Mapping**

Can control the number of internal and external network port mapping, and the internal and external network port can be inconsistent

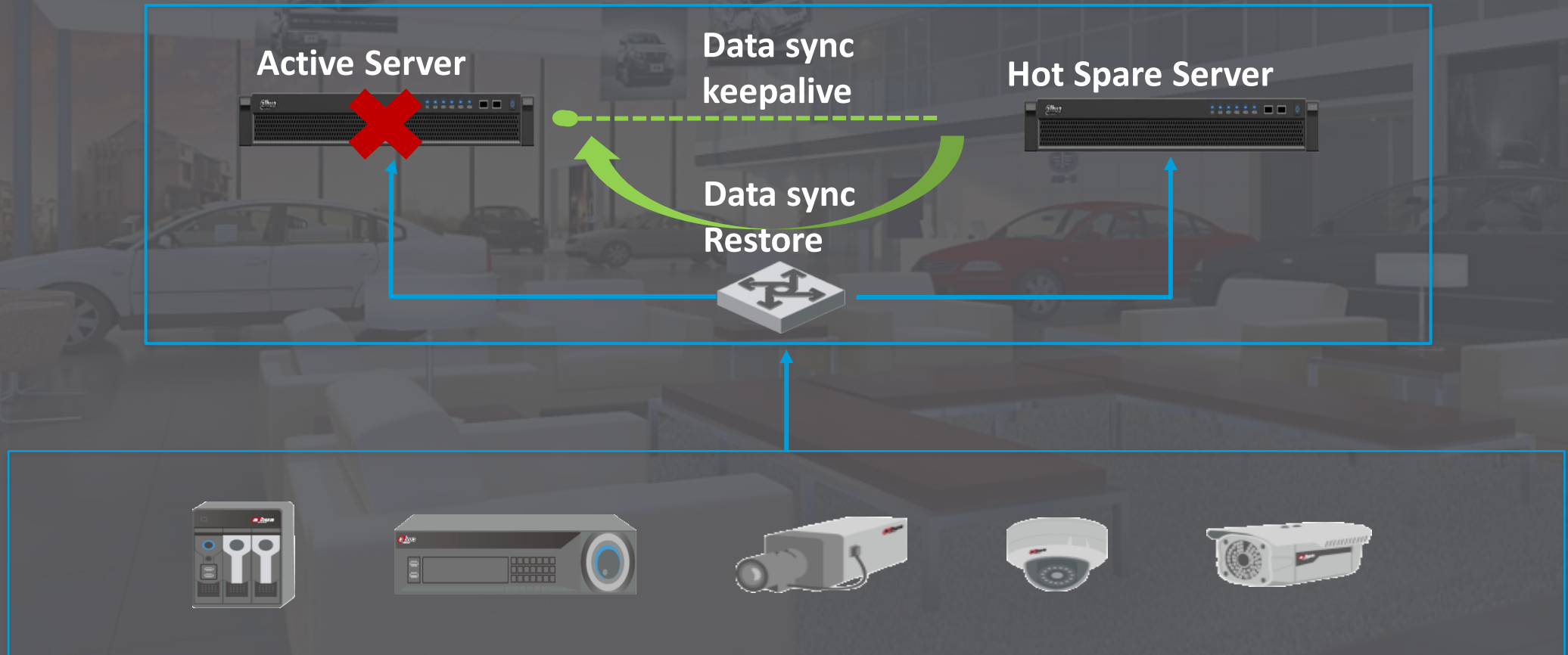
- **DMZ Mapping**

Equivalent to all the ports is the same map directly to the network



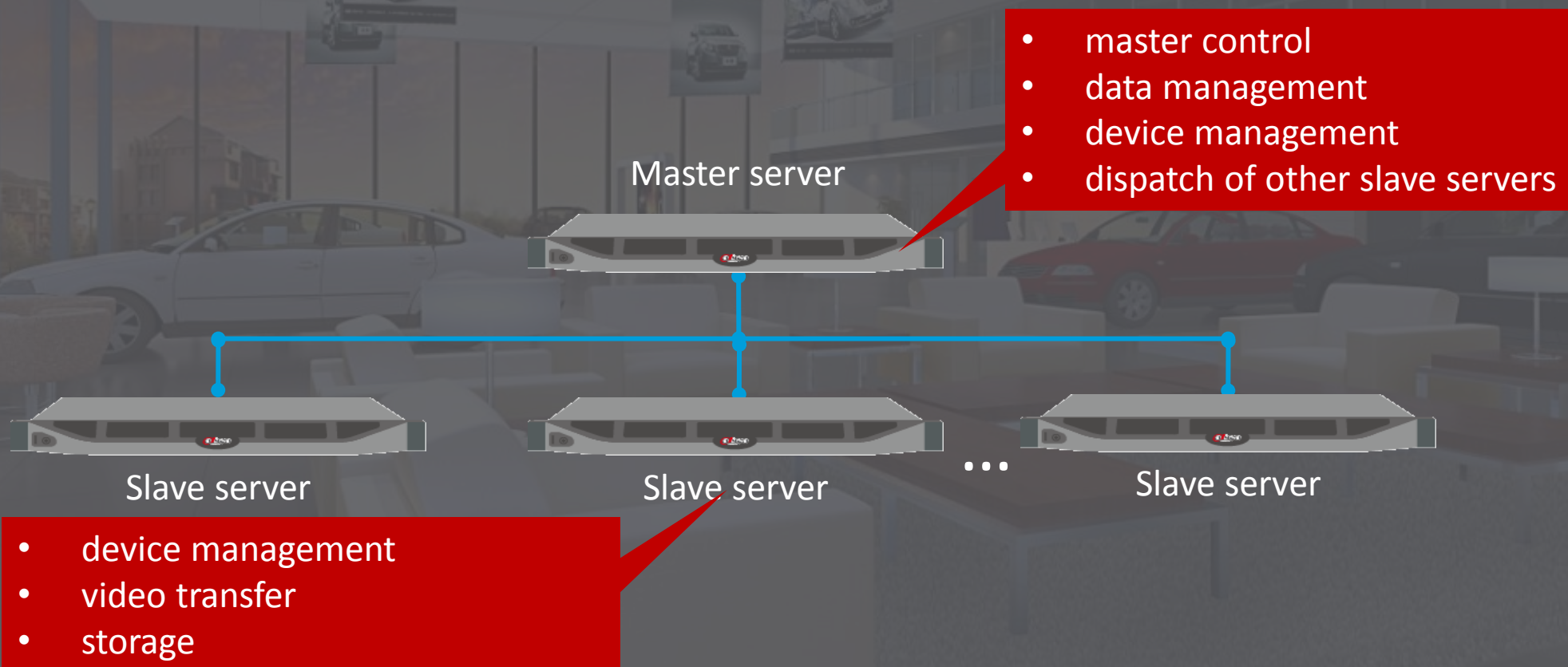
Hot Spare

Hot Spare mode can improve the stability of system, when the active server fail or disconnect, the Hot Spare server change to active mode automatically and the system keep on work



Distribution System

Via distribution, fulfill requirement of larger surveillance system. extend the transfer, storage (DSS7016D) and device management capacity, max support **20 unit**.



N+M

Master server

Hot Spare Server

N Distribute

4



3



2



1



M Redundant

3



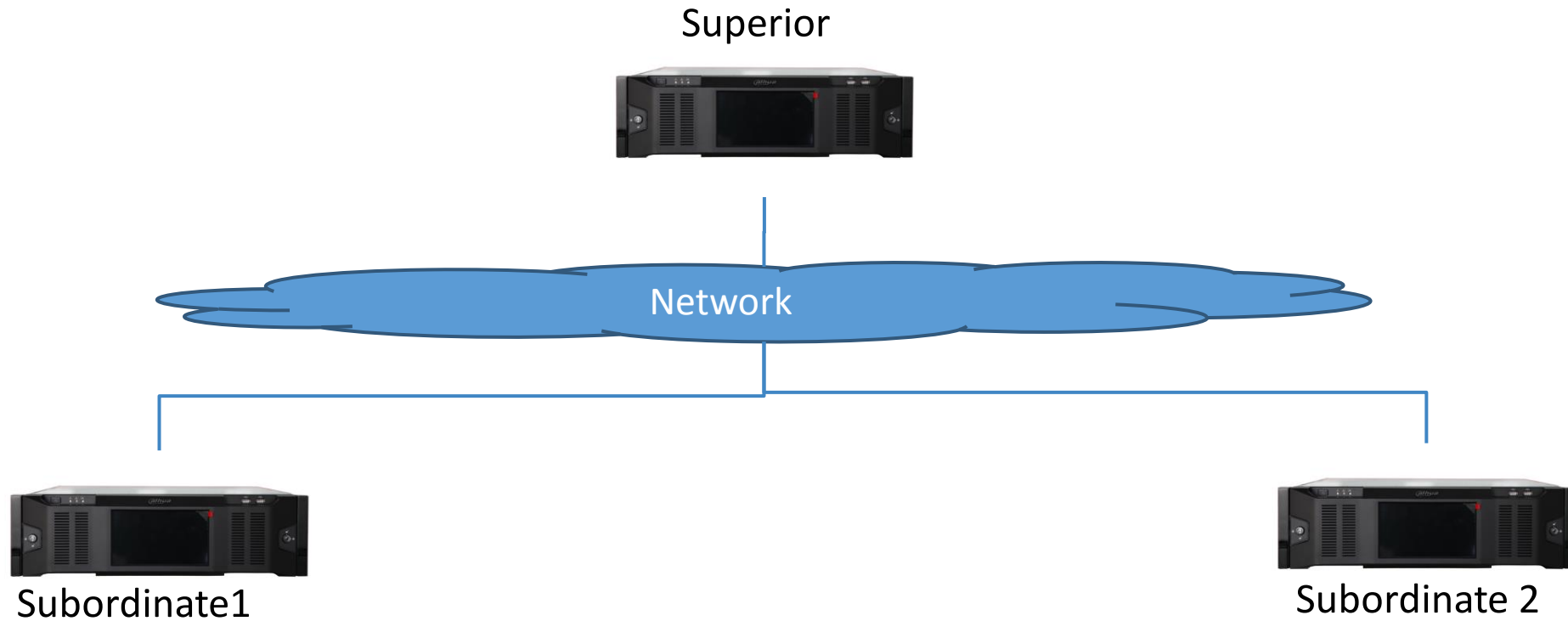
2



N + M is a backup mechanism for slave server

CASCADE

- The superior domain is equivalent to a client of subordinate domain, login on subordinate domain get device list and authority information
- Max support **5-level** cascade



Multicast

1. The equipment must be support multicast
2. when add device which is support multicast on DSS web, must fill in the multicast IP and port

Video Channel Alarm Input Channel Alarm Output Channel

Channel Amount: 1 Bit Stream: Sub Stream ☐ Zero Channel Code ☐ Device Gateway

☒ Enable ALL

☒ 1 Name: Multicast_1 Function: Support Electric Camera Type: Speed Dome SN:

Multicast IP: 224.1.2.5 Multicast Port: 20200

3. Login DSS Client, enter Local, select Multicast

Link Video Playback Snapshot

Connection Type: UDP Bit Stream Type: Main Stream Play Mode: Balance Priority Login Enabled: None

☒ Unicast ☒ Multicast ☐ Default ☐ Self-adaptive

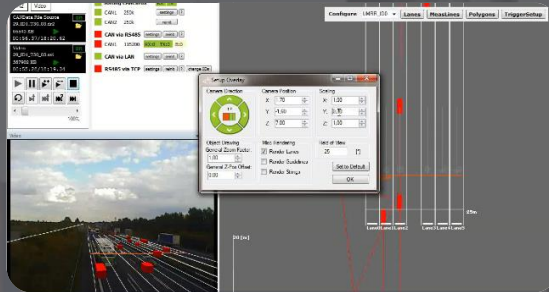
Video Buffer Time: 1500 (0-1500ms)

Double Click On Real Time Window To Switch To Main Stream

目录

1	Product Series
2	Functions Introduction
3	ADD-ON Business
4	DSS Deployment Characters
5	Industry Application
6	Success Cases

INTELLIGENT TRAFFIC



Radar Speed Enforcement

Detect the overspeed, vehicle classification and lane No.



Red light enforcement

Detect the red light runner with video and 3D radar tracking.

ANPR

Record the vehicle plate in multiple lanes with video detection, take a real-time picture of car even drive in 180km/h

INTELLIGENT TRAFFIC

High definition monitoring

Deliver All kinds of high definition cameras including bullets and PTZ to adapt to the needs of various scenes



Monitor black list with ANPR

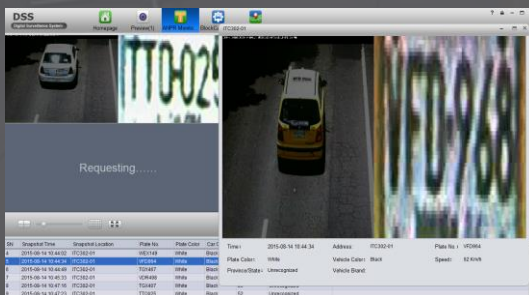
Provide black list alarm in real time and monitor the track of black vehicle in e-map.

Violation management and confirm

Record and store the violated data including time, place, car plate, speed, violation type. Recheck before uploading the data to official violation DB by modify the data.

Abundant traffic data

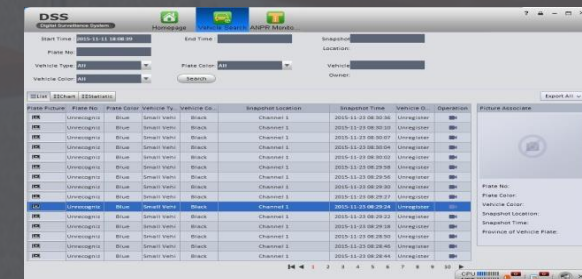
Record regular traffic flow where vehicle driving by the monitor camera. Statistic for all different kinds of violation.



Black List Window



E-map Window



Violation window

MOBILE VEHICLE

Dahua Mobile surveillance solution

Includes from the front-end HD cameras to back-end management system. It meet the needs of the vehicle monitoring and operation at multiple scenes.



MOBILE VEHICLE



Deal with Emergency

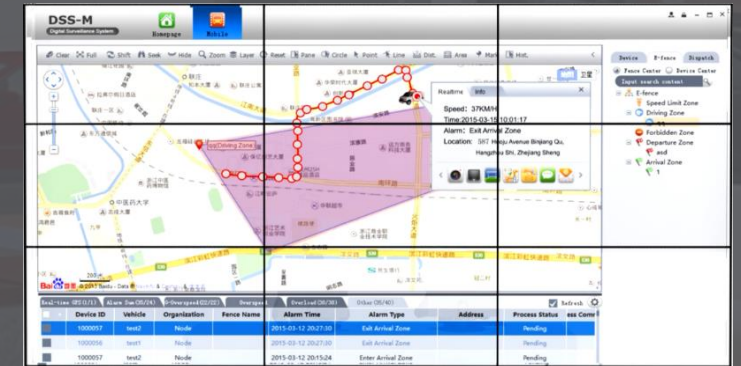
The inside G-sensor help to detect the accident in the first time and sending the alarm and video back to command center for dealing



Prevent Driving Misbehavior

Detect vehicle overspeed and send the GPS information back to command center.

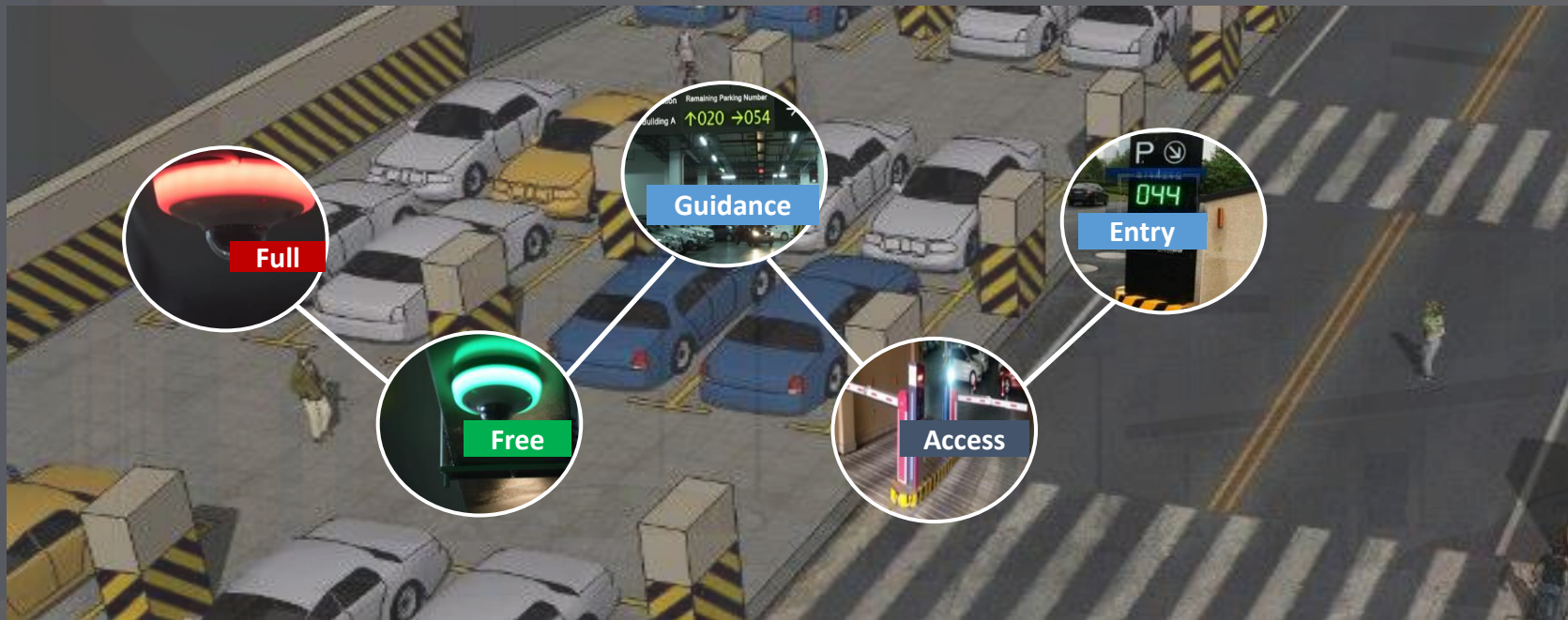
two-way-talk function help to easily making a communication between driver and operator.



Regulate vehicle movement

Electronic fence restricted the vehicle in certain route , to help manage the operation of the vehicle.

PARKING LOT



Parking Guidance

Easy to Find a Free Space

With the indicator of Dahua LED display and detection camera, car owners can locate a free space in just a few minutes. In the meantime, video signals transmitted from the detection camera are of great help for the guarders to check the safety of parking lot.



Parking Entry

Promote the Efficiency

With Dahua advanced LRP algorithm integrated in the ANPR camera, the access can be controlled automatically, which allows the customers to drive directly into the parking lot without stopping cars to get a ticket.

INTELLIGENG BUILDING



Community Surveillance

Need panoramic and detailed view of the real-time situation in the campus of residential area or office building.



Building Access Control

Need visitor management with high security level and visualized confirmation.



Residential Video Intercom

Need advanced notification and video verification when a visitor comes.



Control Room

Obtain effective evidences and references for incidents handling by presenting real-time videos and alerts from all the needed resources onto the video wall.

V6.01.000

INTELLIGENG BUILDING

High definition monitoring

Deliver All kinds of high definition cameras including bullets, PTZ domes and fisheye to adapt to the needs of various scenes

Intelligent video analysis

Tripwire, Intrusion, people counting, heat map among other smart functions are embedded in the cameras to provide a quick reminder of emergencies and even business intelligence



Alarm system with high reliability

Provide rich interoperability by integrate alarm events with video surveillance and access management, results in better situation awareness and decision-making

Video Intercom

Provide visitor notification and alarm alerts through IP-based video intercom system. Messages can be received from Intercom center as well.

Access control with high security level

Provide various types of authentication methods including fingerprint, password and MIFARE card, and link the system with video surveillance



Access Control



Alarm

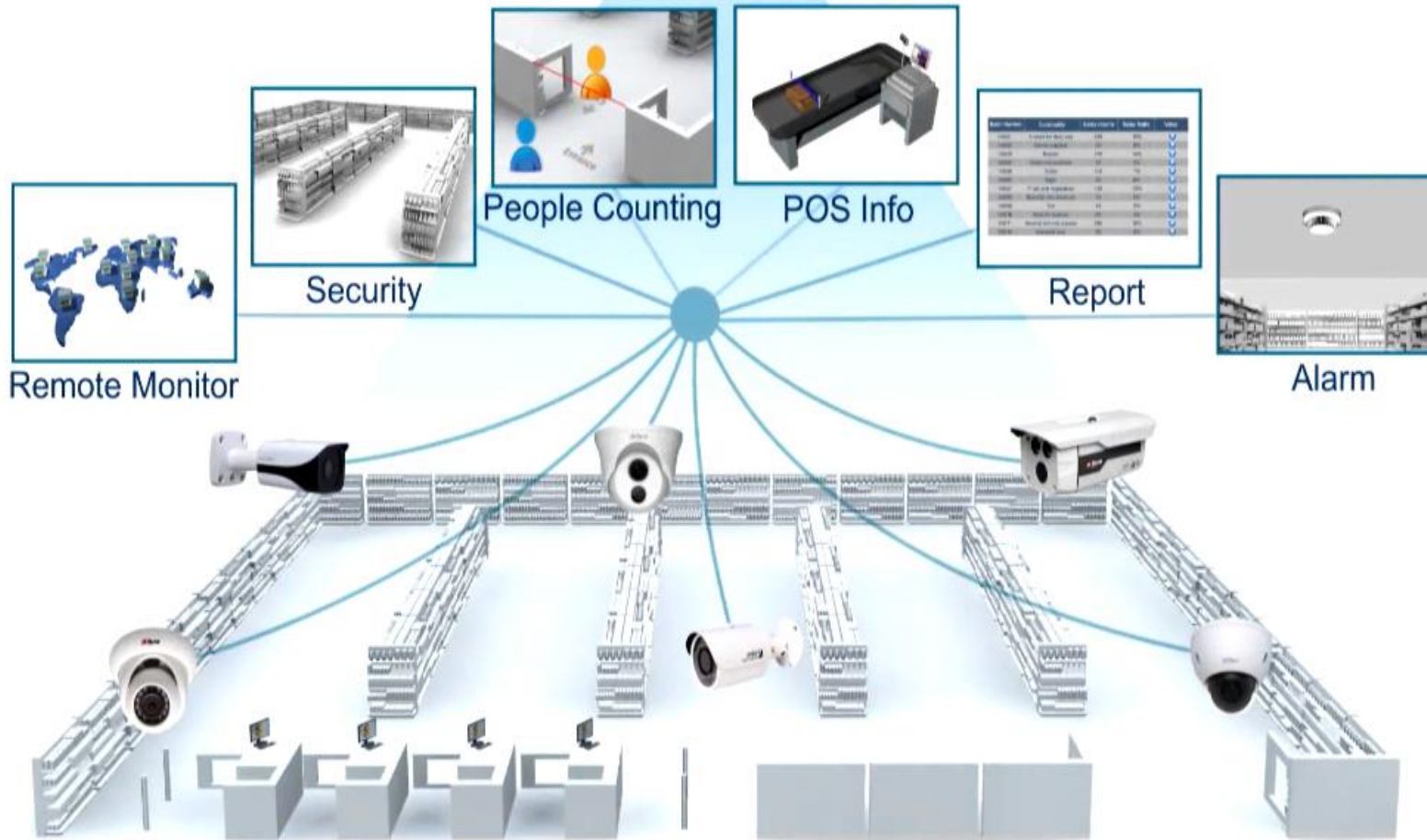


Surveillance



Video Intercom

RETAIL



Provide better security

Through monitoring the POS and linkage of videos to know short changed

Make better Management

Through People counting to know the customer flow situation

Greater business value

Through sales report to know the Commodity sales situation

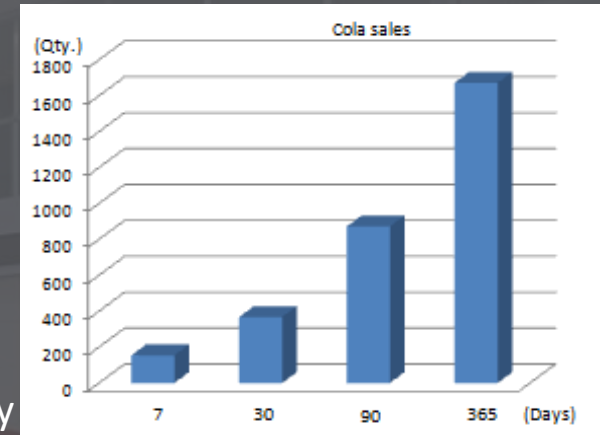
RETAIL

POS Real-time display and Search



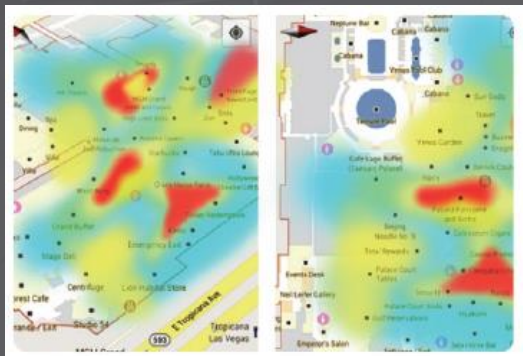
- Real-time display of POS transaction information.
- Playback video relevant with the search result you have chosen.

Sales Report



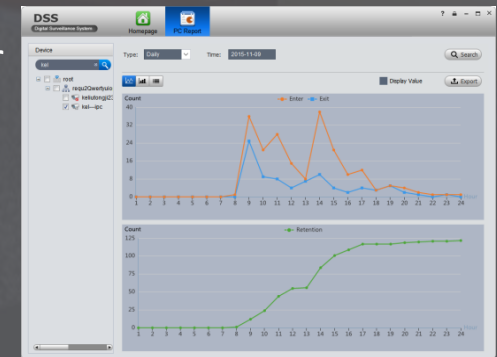
- Management platform generate sales reports based on POS data.
- Show the commodity sales situation of different stages intuitively

Retail Integration



- Output customer activity density to show which area attracts most customers

- Real-time display of customer flow quantity.
- Timely open more counters When there are too many customers.



People counting

Hot map

Catalog

1	Product Series
2	Functions Introduction
3	ADD-ON Business
4	DSS Deployment Characters
5	Industry Application
6	Success Cases

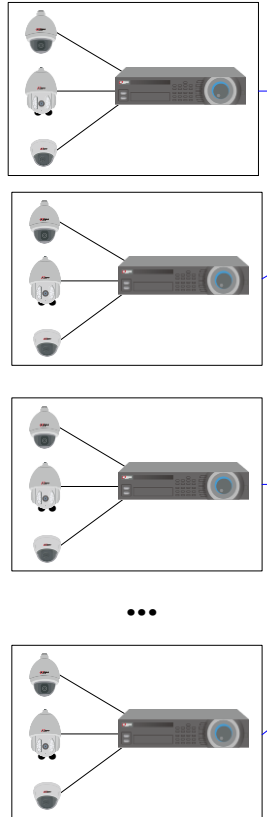
Successful Case | Lulu Hypermarket Surveillance Project

Lulu Hypermarket is a hypermarket chain and retail venture started by Lulu Group International in 2000. It has **over 30,000 employees** of various nationalities.

It is **one of the largest retail chains in Asia** and is the **biggest in Middle East** with 115 outlets in the Gulf Cooperation Council (GCC) countries and one in Kochi, Kerala, India. Research firm Deloitte, recently placed it amongst the world's 50 fastest growing retailers.

Successful Case | Lulu Hypermarket Surveillance Project

HDCVI Camera & DVR



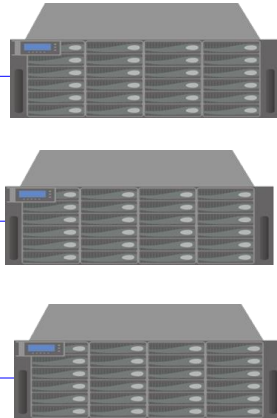
Dahua VMS(Master)



Dahua IP-SAN



Dahua IP-SAN



Dahua VMS(Slave)



3*5 Video Wall



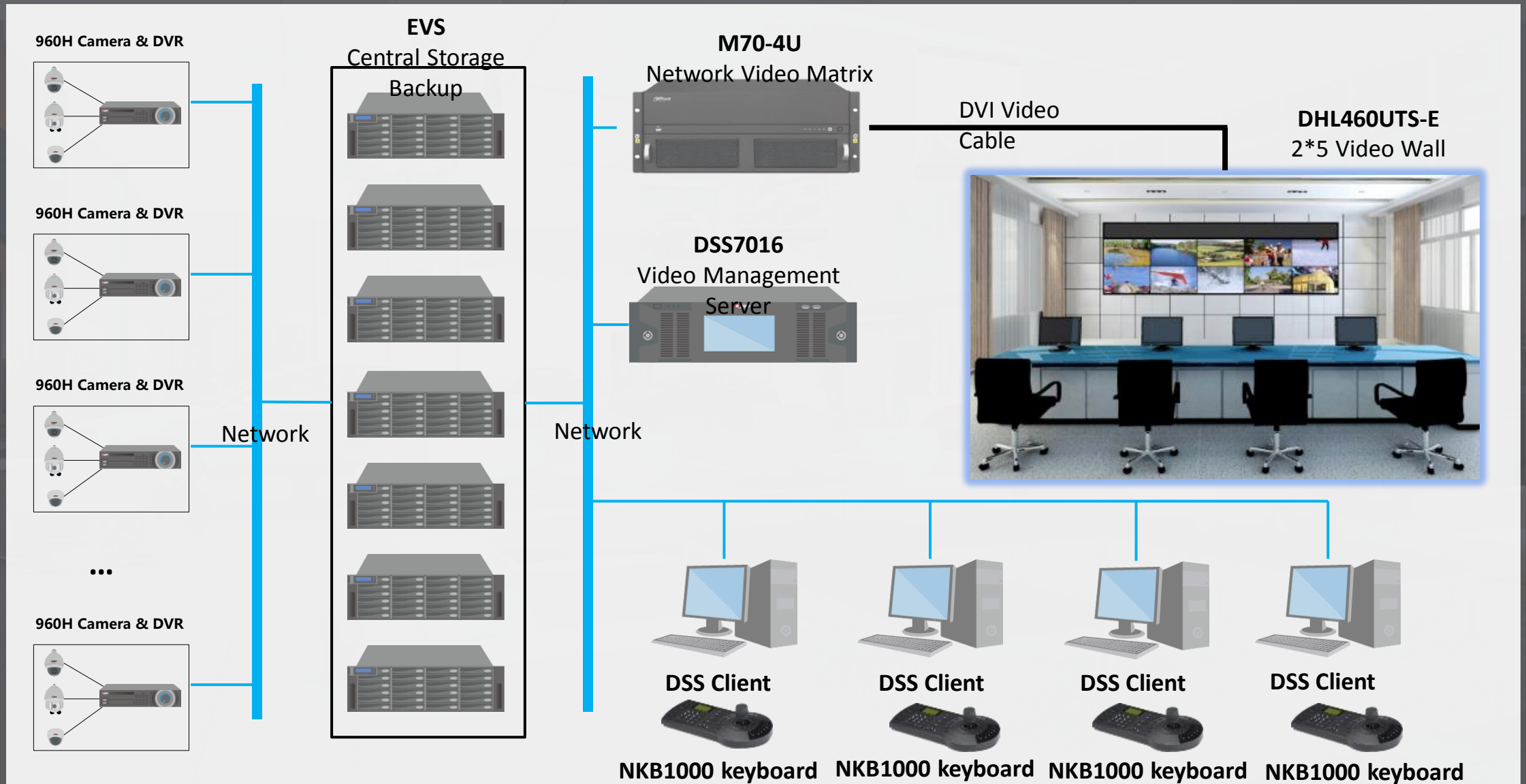
M70-4U Network Video Matrix



VMS Client Software



Successful Case | Mexico City Plaza Inn Surveillance



Successful Case | Mexico City Plaza Inn Surveillance





Dahua Technology, Make Your Life Safer