

How to connect the indoor monitor and outdoor station

1. Config the indoor monitor

Open the **Setting/Project Setting**

The password is the: 002236

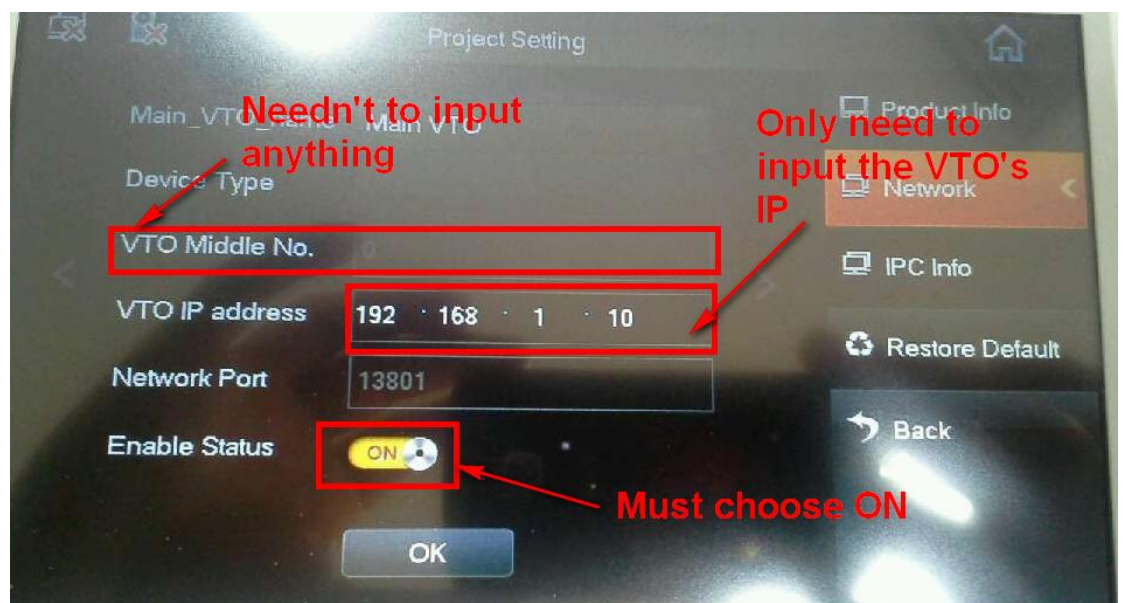
a. Config the indoor monitor's info.

Input the room NO and IP address.



b. Config the network.

Here input the IP address of the outdoor station.



If you have more outdoor stations, you can add the **Sub_VTO**

The screenshot shows the 'Project Setting' interface for configuring a Sub_VTO. The main configuration area on the left includes the following fields: 'Sub_VTO1_name' (empty), 'Device Type' (set to 'Unit Door Station'), 'VTO Middle No.' (set to '0'), 'VTO IP address' (set to '0 . 0 . 0 . 0'), 'Network Port' (set to '13801'), and 'Enable Status' (a toggle switch set to 'ON'). A blue 'OK' button is at the bottom center. On the right side, there is a vertical menu with options: 'Product Info', 'Network' (highlighted in orange), 'IPC Info', 'Restore Default', and 'Back' (with a circular arrow icon).

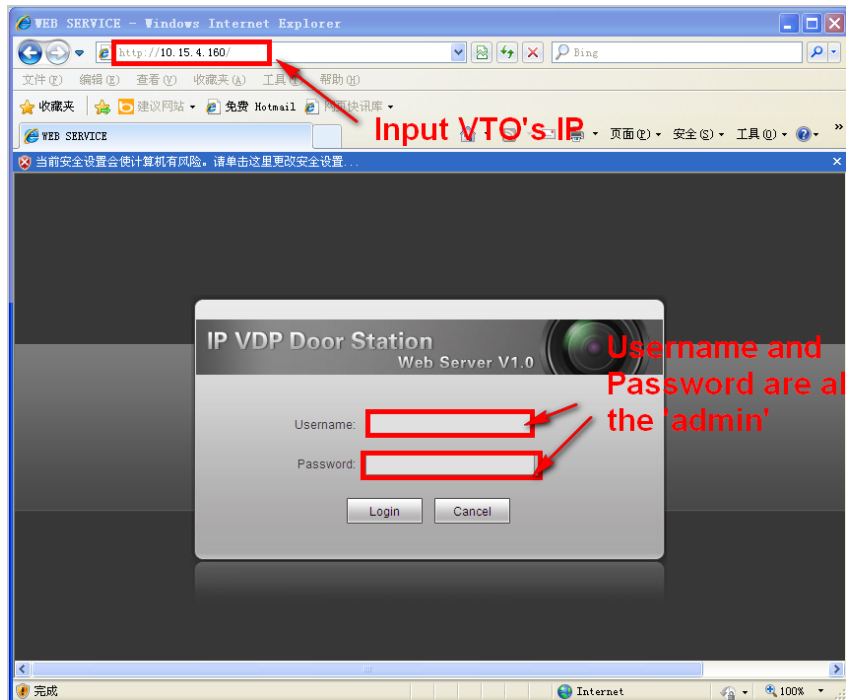
Just need to input the VTO IP address.

c. Config the IPC

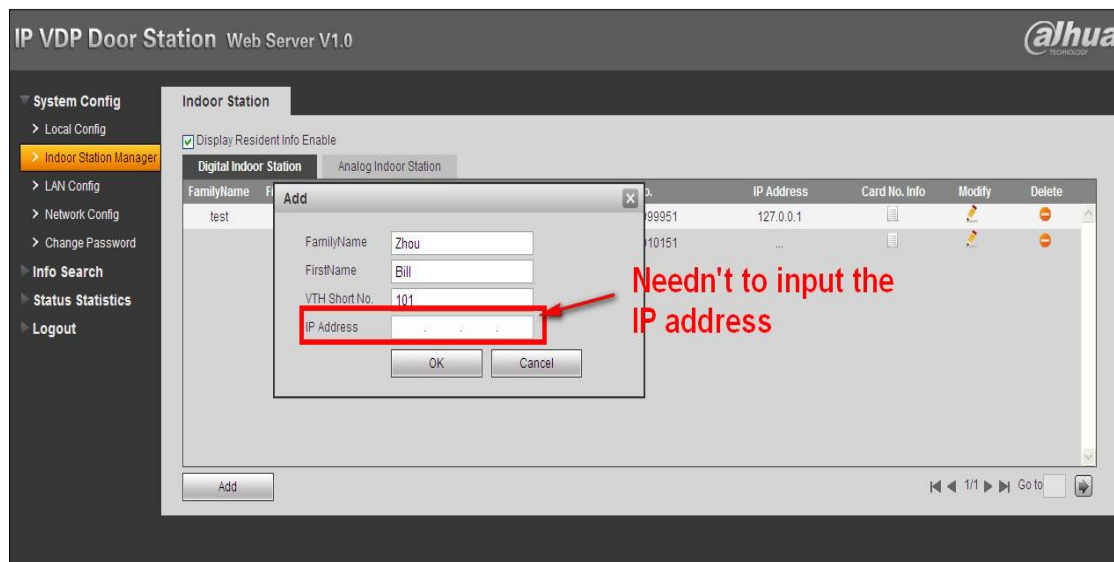
Input the IPC name, IP address, IPC's User Name and Password.

The screenshot shows the 'Project Setting' interface for configuring an IPC. The main configuration area on the left includes the following fields: 'IPC0Name' (set to 'ip1'), 'IP Address' (set to '192 . 168 . 1 . 107'), 'User Name' (set to 'admin'), and 'Password' (masked with six dots). A blue 'OK' button is at the bottom center. On the right side, there is a vertical menu with options: 'Product Info', 'Network', 'IPC Info' (highlighted in yellow), 'Restore Default', and 'Back' (with a circular arrow icon).

2. Config the outdoor station (The starting IP is 10.22.5.189)
 - a. Log on the web interface



- b. Add the indoor monitor's room NO.
Click the **Indoor monitor Manager**, then click the **ADD**
Can write in the Family name, First name and VTH Short NO.
Needn't to input the VTH's IP address.



3. Connect the VTO and VTH by the network cable to test.