

## How to config main VTO and Sub VTO

Using VTO1210B-X, VTO6110B, VTH1520AS as an example.

The IP address:

Main VTO --VTO1210B-X: 10.36.23.100

Sub VTO-- VTO6110B: 10.36.23.201

Indoor monitor--VTH1520AS: 10.36.23.189 room number:101

Our video door phone can support to connect one VTH and multiply VTO , and one VTO as main VTO, the others as Sub VTO. The set to config the devices as follows:

- 1、 Add VTH on the VTO's Web interface, make sure change the video format into **WVGA**

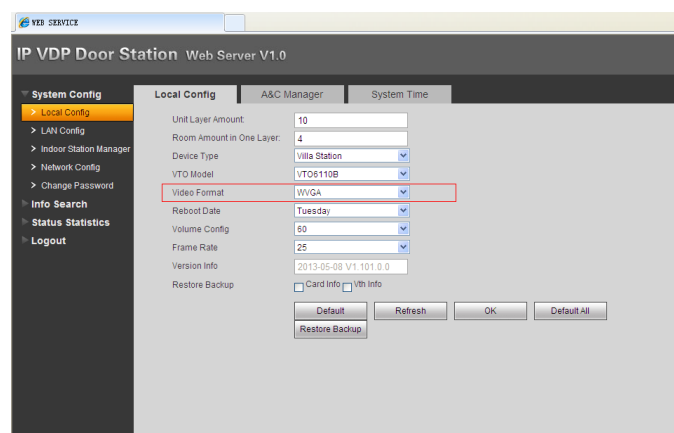


Figure-1 setting on VTO6110B

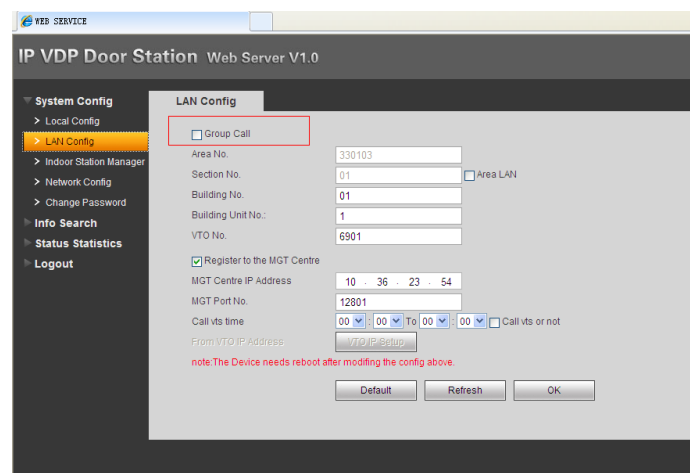


Figure-2 do not choose group call

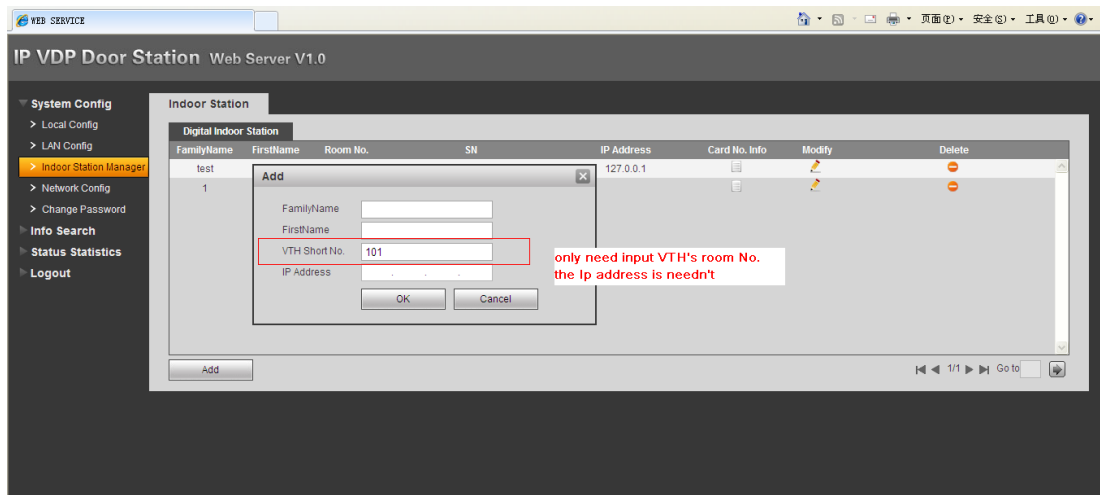


Figure-3 add VTH on the VTO6110B

2、 add the VTH to VTO1210B-X, it is similar as VTO6110B

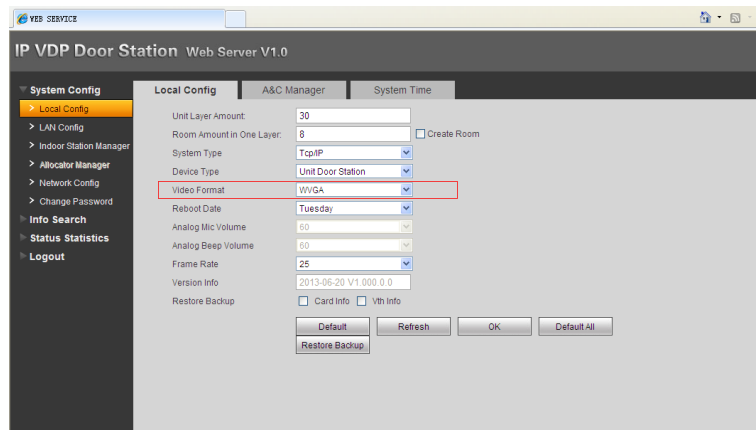


Figure-4

3、 add VTO on the VTH  
the password of the project settings is 002236

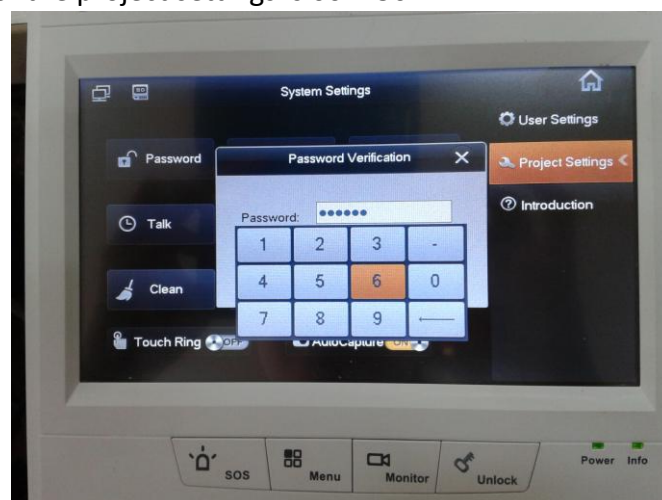


Figure-5



Figure-6



Figure-7 set the main VTO



Figure-8

4、 after the above operation is completed, check video talk>monitor, you can choose the VTO which you want monitor.



Figure-9



Figure-10