

How to set the Fence Station

1、VTO's web interface

Check System Config>Local Config>choose Device Type into Fence Station, choose Video Format into WVGA. Then point ok to save them. See figure 1

Check LAN config, set fence station 's short , it need be different with other VTO, such as 6905

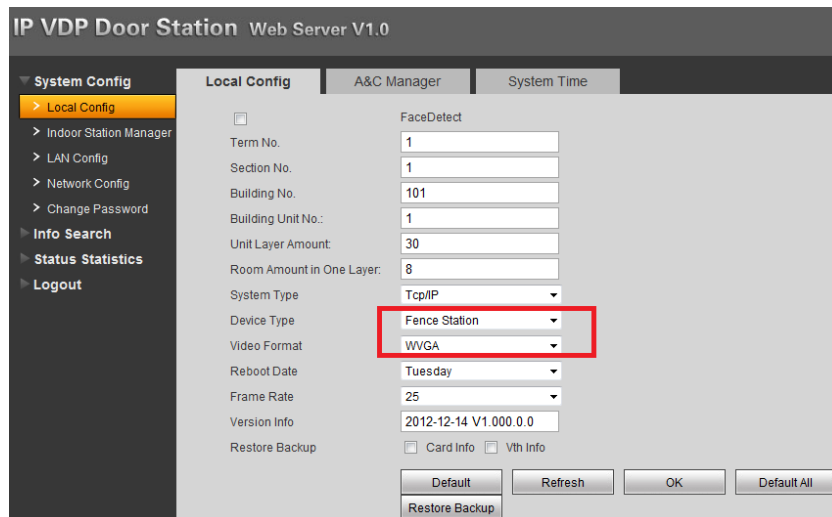


Figure 1

Check Indoor Station Manger, add VTH's Room No. for example 102, see figure 2

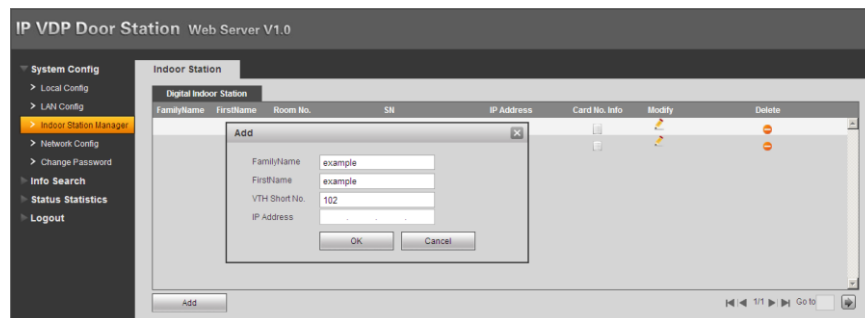


Figure 2

2、VTH's Screen

VTH need be connect well with the main VTO first, then you can add Fence station for VTH
Check settings>project settings>002236>Network>choose '>' to set sub VTO, choose the Device Type into Fence Station, add fence station's name, middle No.(need be different with the other VTO, such as 6905). Point OK to save them . See figure 3

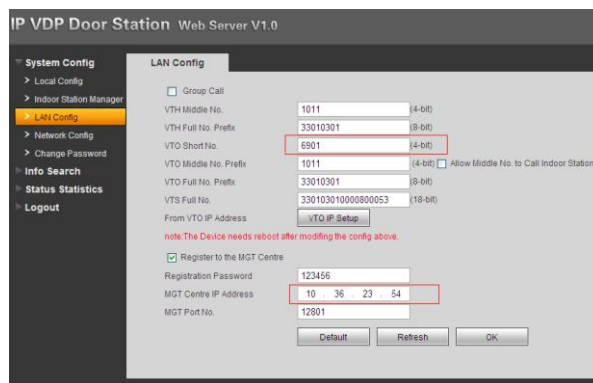


Figure 3

3、 add Fence Station on VTMS

the way to add fences station is similar with add VTO on VTMS (refer to “the fast operation manual of VTMS” step 2)

Input the operation platform IP address on the VTO web interface, the VTO Short NO: 6905(refer figure 4)



VTO\VTH Middle No.

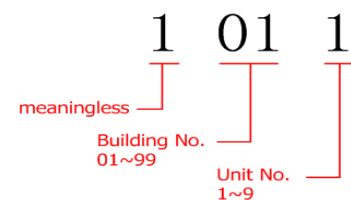


figure 4

Click add on the VTMS interface. Input the info as follows(refer figure 6-1). Type: **Wall**, Position: the same as you have set in the Organization: Building No. /Unit No. should be consistent with the info of Middle No. which set on the web interface; port number: 6905, other information as the default Settings, then Click save.

Add device [X]

SN:

Name: *

Type: *

Manufacturer: *

Position: *

Net Address: . . .

Sub Net: . . .

Gate Ways: . . .

Net Port: **needn't to put anything**

Switch:

Recieve Notice: ☒

Comments:

Type & location can't be changed after saving!

Figure 7

