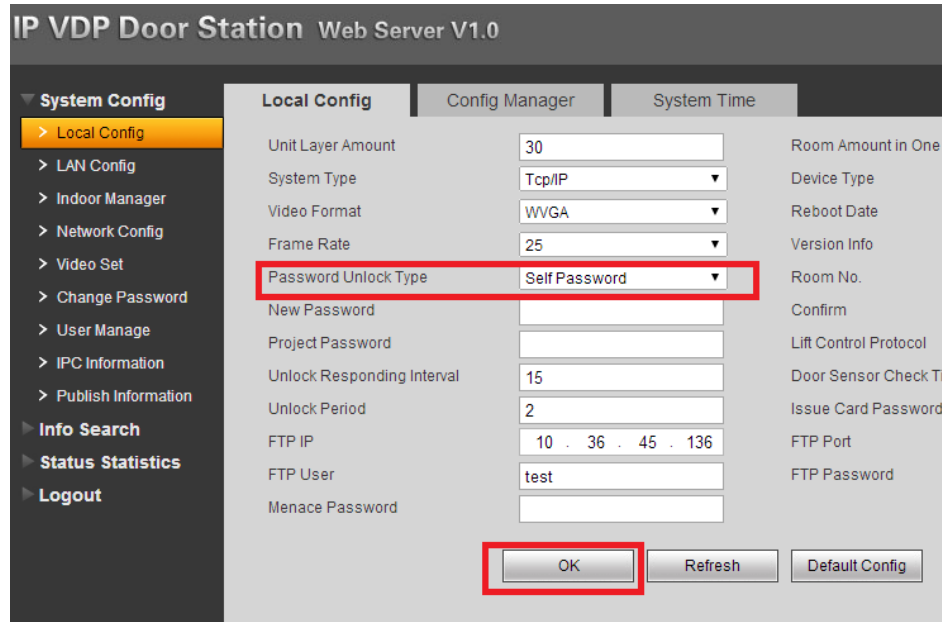


How to set Self unlock password

Step 1 In IP apartment system, make VTO and VTH can work well

Step 2 On VTO's web, check System Config>Local Config> Password Unlock Type>SelfPassword

Then check ok to save it



Step 3 On VTH's screen, check Setting>Password> Unlock Pwd

For the first time, there is no default password of Old pwd, so , no need to input it

Please input New Pwd and confirm it, then check OK to save it.



Step 4 After above settings, user can unlock by self password, on the VTO's panel, user should press # **Room No.**+ **password**# to unlock. Please default that the room number should be input as 4 digital. For example

1. Room 101, set unlock password as 123, on the VTO, please input #**0101**123#
2. Room 9901, set unlock password as 123456, on the VTO, please input #**9901**123456#