

Directory

- 1、 VTO1220BW web setting 1
- 2、 VTH screen setting 2

There is **NO** standard third party SIP server, VTO set as SIP server, Meanwhile , it is also outdoor station, VTH is set as Client environment:

For example:

VTO1220BW----10.5.7.106; Building No. 03, Unit No. 01, VTO No. 8001; its complete number is 03018001

VTH1560B-----10.5.7.66; Room No. 9901

Steps:

1、 VTO1220BW web setting

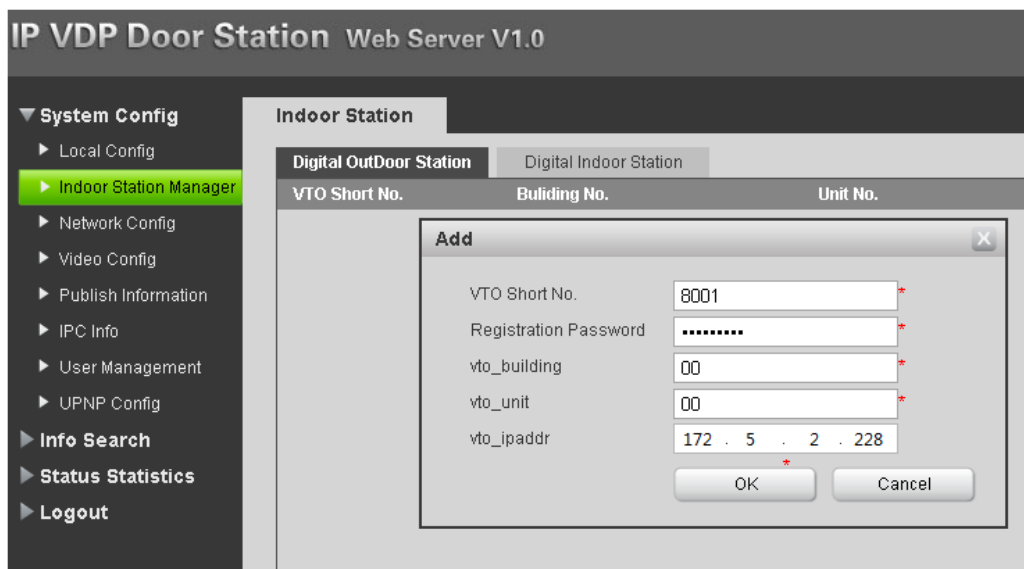
LAN config> Building No.----00; Unit No. ---00, VTO No. ---8001

The screenshot shows the 'IP VDP Door Station Web Server V1.0' interface. On the left is a sidebar menu with 'System Config' expanded, showing options like Local Config, Indoor Station Manager, Network Config (highlighted), Video Config, Publish Information, IPC Info, User Management, and UPNP Config. The main area has three tabs: 'TCP/IP', 'Self Config', and 'SipServer Config'. The 'Self Config' tab is active, displaying input fields for 'Building No.' (00), 'Unit No.' (00), and 'VTO Short No.' (8001). Below these fields are 'OK' and 'Default' buttons.

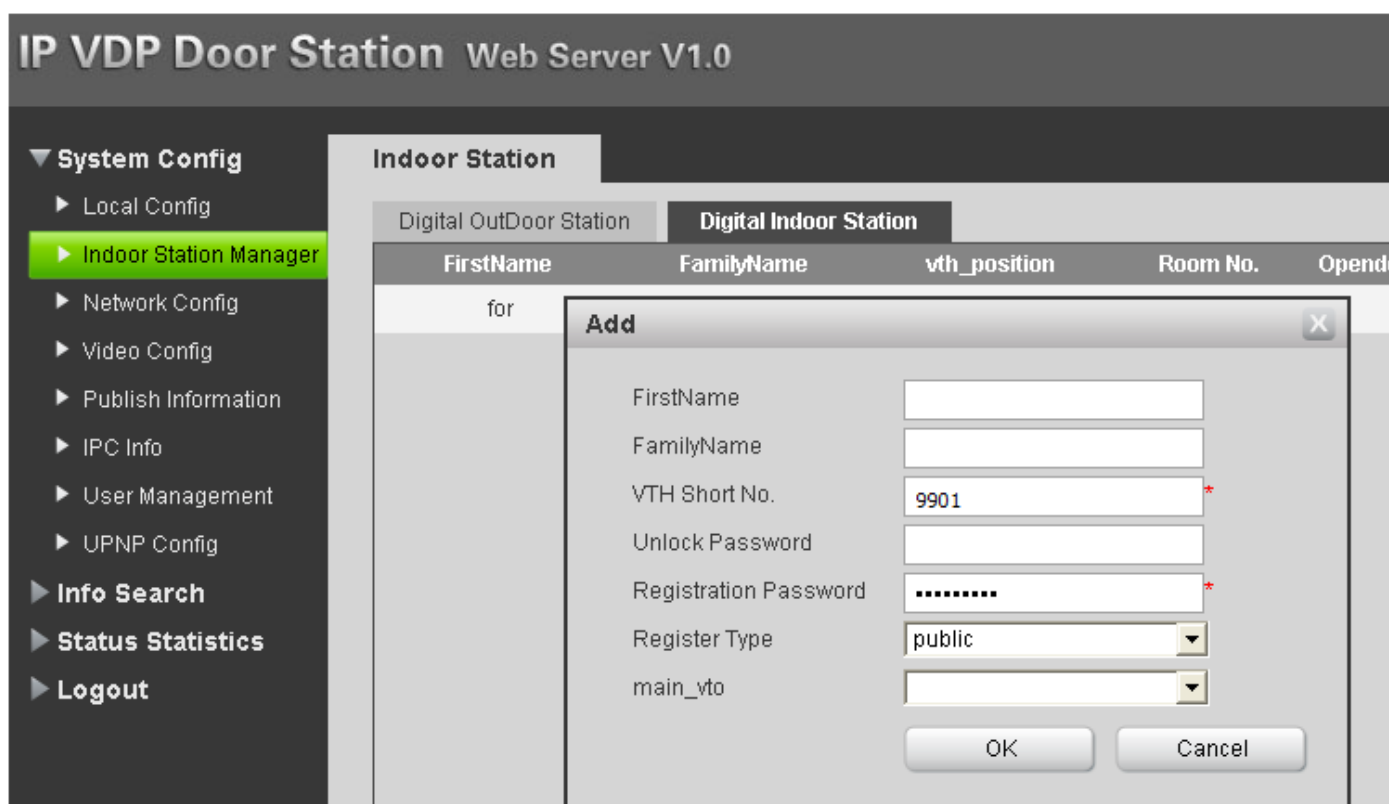
Network Config -> As Sip Server Tick Off ,All registration passwords are default as 123456
Check 'OK' to save it, and the VTO will reboot.

The screenshot shows the 'IP VDP Door Station Web Server V1.0' interface with the 'SipServer Config' tab selected. The sidebar menu is the same as in the previous screenshot. The main area shows configuration fields for SIP: 'SIP Server IP' (10 . 0 . 0 . 252), 'SIP Server Port' (5060, with a range of 1~65535), 'UserName' (8001), 'Registration Password' (masked with dots), and 'SIP Domain' (VDP). There is a checkbox labeled 'As Sip Server' which is checked. At the bottom are 'OK', 'Refresh', and 'Default' buttons.

Device Manager> input VTO short No. as 8001,building and unit as 00, input VTO's IP address



Indoor Station -> Digital InDoor Station, Add Indoor Station 9901



2、VTH screen setting

Settings> Project setting> the default password is 888888



Product info> input room number as 9901, point 'OK' to save it

Project Settings

Room No. 9901 Master

Local IP 1 2 3 #

Subnet Mask 4 5 6 0

Gateway 7 8 9 ←

MAC 00:00:00:00:00:00

Version Eng_P_V1.100.0000.0.R.20140429

OK DHCP ON

Product Info SIP Server Network IPC Info Default Back

SIP Server> input SIP server IP, there is VTO's IP address, point 'OK' to save it

Project Settings

VTO IP Address 10 . 15 . 5 . 106

Network Port 5060

User Name 101

Password ●●●●●●●●

Realm VDP

Enable Status ON

OK

Product Info SIP Server Network IPC Info Default Back

Network>Input VTO's IP address, , point 'OK' to save it

Main_VTO Name Main VTO

Device Type Unit Door Station

VTO Middle No. 0

VTO IP Address 10. 15. 7. 106

Network Port 13801

Enable Status ON

OK