

1 System Login

Note: close the windows fire wall when you using the VTMS

Open Internet Explorer, in address field, input server IP address such as <http://serverip:8787/admin>, and meanwhile replace server IP with IP of VTMS. For example <http://10.18.116.118:8787/admin>

Please download operator client, and install it in PC.

Input username and password, press Enter. System default admin and password is admin/123. See Figure 1

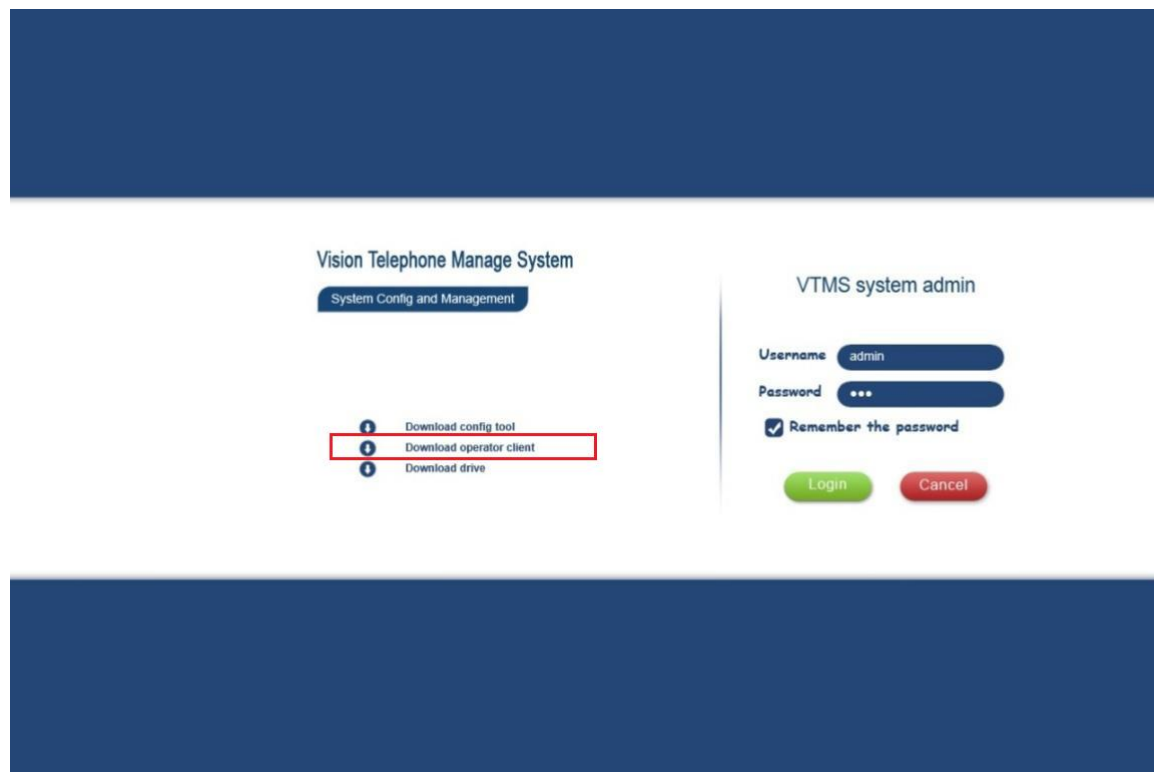


Figure 1

2 System Config

Before using VTMS, you must config:

- Organization Config
- Device Management
- Channel Management

2.1 Organization Structure

Community structure has the following layers: community, building, unit and room. In VTMS, one server can only have one root directory via basic management---organizational page to add community structure. There are two ways to do it:

- Batch add
- Add

For example ,there is 2 buildings in 1 community, and each building has 2 Unit, so the organizational be set as blew, See Figure 2

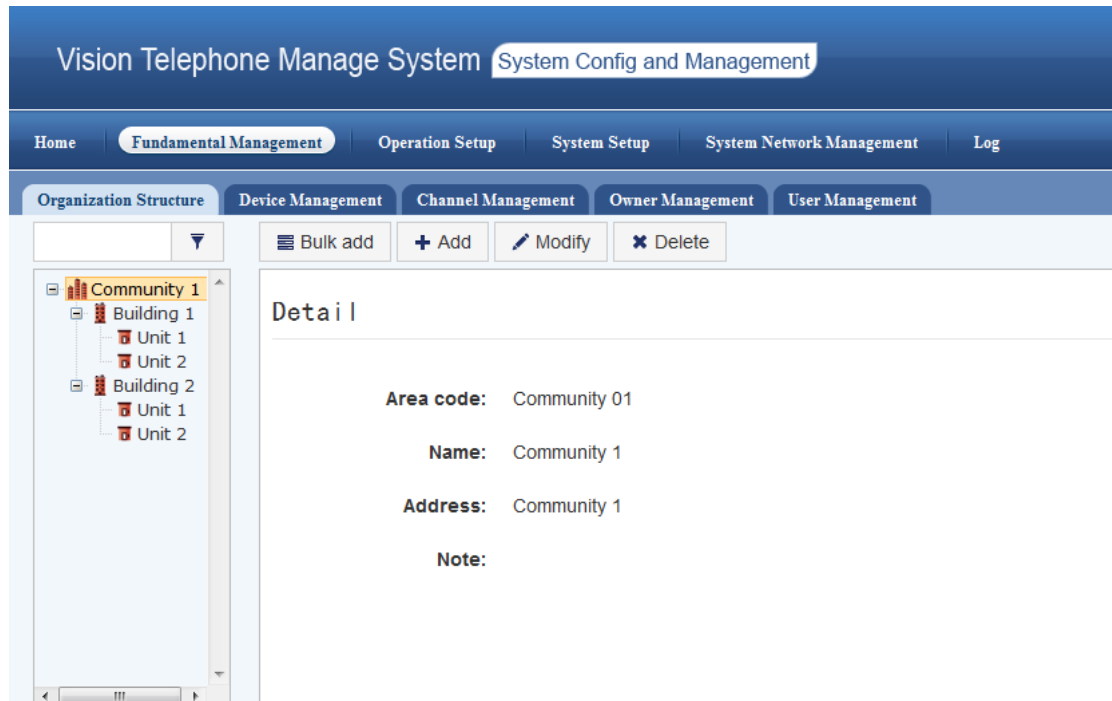


Figure 2

2.2 Device Management

VTMS configures and manages device via device management entry. You also can add the device as batch or individually. Main devices include:

- Video talk device: fence station, VTO, analog VTH, digital VTH, VTS.
- Encoding device: DVR, IPC.
- Decoding device: decoder.
- Access control device: VTO, network to serial, access control extension module.

Take video talk device as example :

2.2.1 add VTO

Click Add>VT device

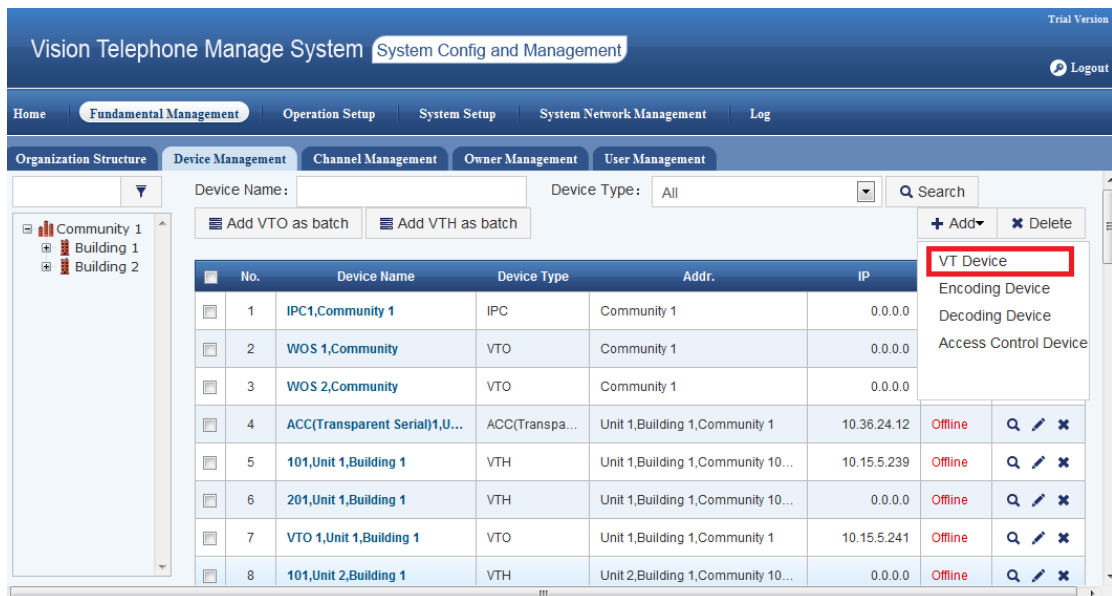


Figure 3

- Step 1 Choose Device Type into VTO,
- Step 2 Choose the organizational, such as building 1/unit 1.
- Step 3 Then you'd set the port No. same as VTO's short No., such as 6901. If you need add multiple outdoor stations ,the short No. need be different (6901,6902,.....,6999)

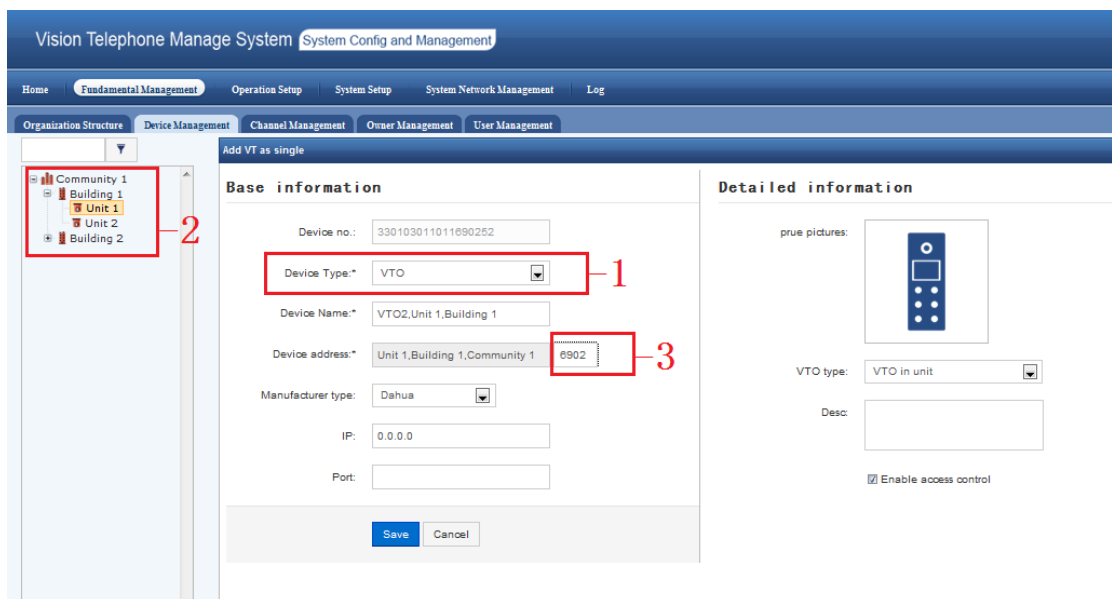


Figure 4

2.2.2 add VTH

The way to add VTH is similar as add VTO, pay attention to the step 3 as above , when you add VTH, step 3 need be input VTH's Room No. such as 101

Vision Telephone Manage System System Config and Management

Home Fundamental Management Operation Setup System Setup System Network Management Log

Organization Structure Device Management Channel Management Owner Management User Management

Add VT as single

Base information

Device no.: 33010301101101010151

Device Type: VTH

Device Name: 101,Unit 1,Building 1

Device address: Unit 1,Building 1,Community 1 0101

Manufacturer type: Dahua

IP: 0.0.0.0

Port:

Save Cancel

Detailed information

True pictures: IP

VTH type: Digital

Desc:

Figure 5

2.2.3 Config in VTO's web interface

Please check the VTO No. it need be same with the short No. (step 3) as figure 4
And choose Register to the MGT Centre, input your PC's IP, such as 10.18.116.118

System Config

Local Config

LAN Config

Indoor Station Manager

Allocator Manager

Network Config

Video Set

Change Password

User Manage

IPC Information

Publish Information

Info Search

Status Statistics

Logout

LAN Config

☐ Group Call

Area No. 330103

Section No. 01

Building No. 01

Building Unit No.: 1

VTO No. 6901

☒ Register to the MGT Centre

MGT Centre IP Address 10 . 18 . 116 . 118

MGT Port No. 12801

From VTO IP Address VTO IP Setup

Warning: The device needs reboot after modifying the config above.

Default Refresh OK

Figure 5

Please make sure VTO and VTH are working well, and refresh the page of Device Management, they will be show online.

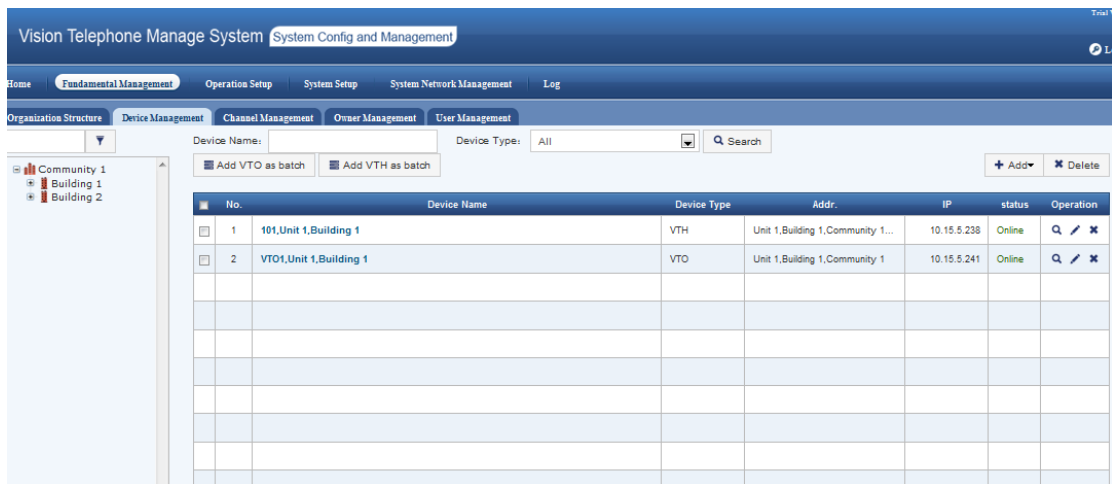


Figure 6



3 open VTMC client

please input the name\pwd as admin\123

Vision Telephone Manage System

name: admin

pwd: 123

ip: 10.18.116.118 port: 8787

☐ auto login ☒ save pwd

Login Cancel

Figure 7

Then you can test the function as blew image, such as Live Monitor, Call VTH, send message and receive alarm info from VTH.

Check Local Config>System Config> Pop up real time alarm box into YES

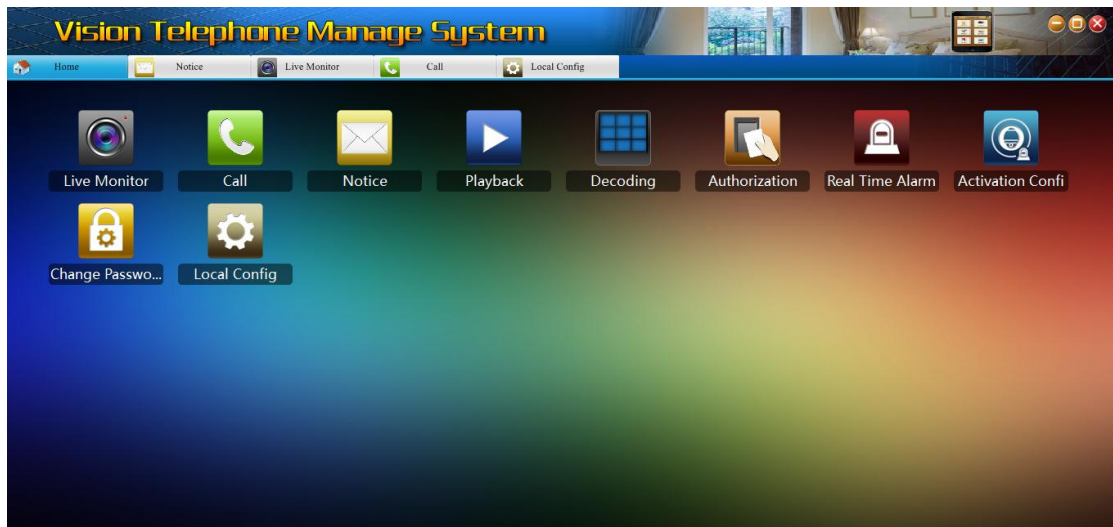


Figure 8