

# How to set the Fence Station

## 1、 VTO's web interface

Check System Config>Local Config>choose Device Type into Fence Station, choose Video Format into WVGA. Then point ok to save them. See figure 1

Check LAN config, set fence station 's short , such as 6901, this number be same with the No. you input in the VTMS.

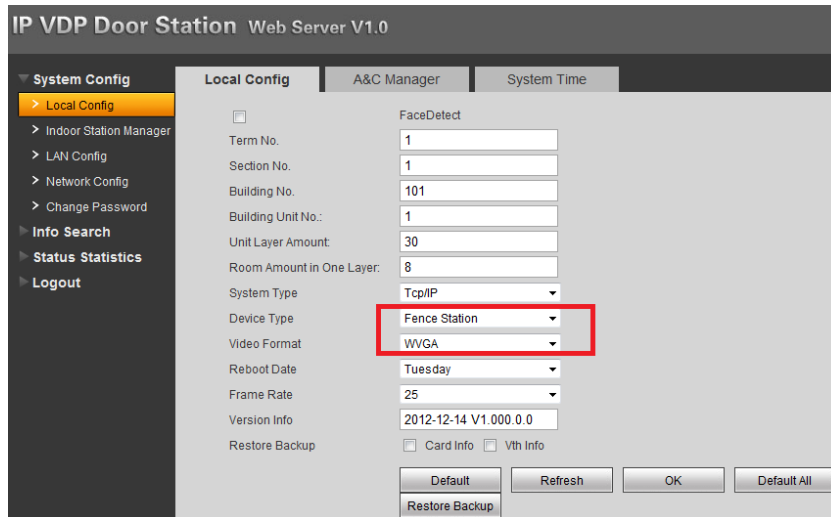
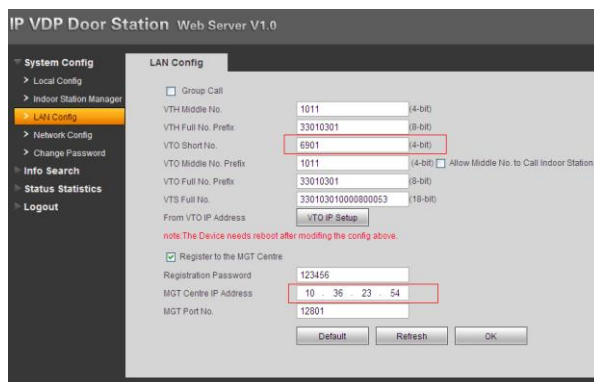


Figure 1

## 2、 add Fence Station on VTMS

the way to add fences station is similar with add VTO on VTMS (refer to “the fast operation manual of VTMS” )

Input the operation platform IP address on the VTO web interface, the VTO Short NO: 6901(refer figure 2)



VTO\VTH Middle No.

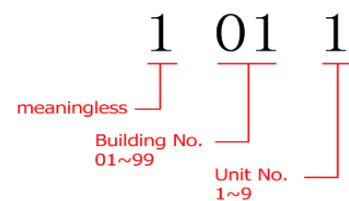


figure 2

Chick add on the VTMS interface. Input the info as follows(refer figure 3).

Setp 1 choose devide type as VTO

Step 2 choose location as Community

Step 3 Input short number as you set on the VTO's web interface, such as 6901.

HomeFundamental ManagementOperation SetupSystem SetupSystem Network ManagementLog

Organization StructureDevice ManagementChannel ManagementOwner ManagementUser Management

Community 1Building 1Unit 1Unit 2Building 2

Base information

Device no.:330103011000690152

Device Type:\*VTO

Device Name:\*WOS1,Community 1

Device address:\*Community 16901

Manufacturer type:Dahua

IP:0.0.0.0

Port:

Detailed information

prue pictures:

VTO type:WOS

Desc:

☒ Enable access control

Figure 7

