

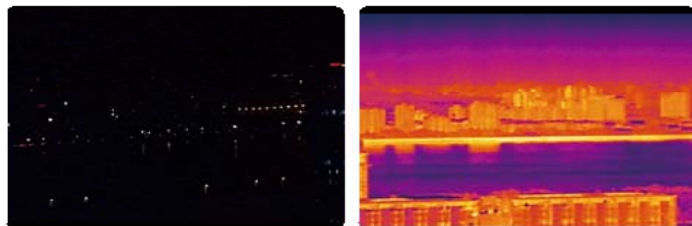
THERMAL CAMERA



## Why Use Thermal Imaging?

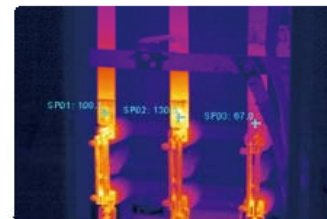
Video surveillance requires the effective detection and identification of objects. Although visible light cameras provide satisfactory coverage in most monitoring applications, in diverse environments, such as those with harsh conditions or extreme darkness, they are not very effective. Thermal cameras, which do not require a light source, are excellent for providing enhanced coverage in these conditions. In addition, thermal cameras have long range detection and temperature measurement capabilities, allowing them to be used in conjunction with visible light cameras to achieve all-weather, comprehensive surveillance.

### Detection in Total Darkness



Thermal camera has no need for additional lighting. Even in total darkness, it achieves perfect image quality just as in daytime.

### Temperature Measurement and Alarm



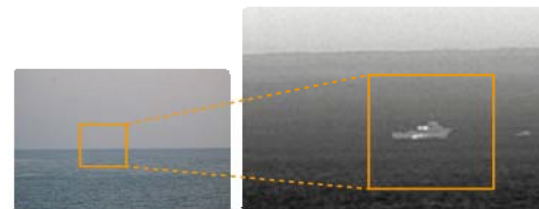
Thermal cameras have temperature measurement capabilities which allow for the display of exact temperature information. Configurable temperature thresholds trigger an alarm and notify workers when objects reach temperatures above the limit.

### Performance in Harsh Environments



Thermal cameras perform better under harsh conditions such as rain, fog, and haze.

### Long Range Detection



Infrared radiation can be observable over long distances. Cameras with a 100mm lens have the ability to detect humans at distances of over 3km.



## Anti-Corrosion Products

### Camera Features

- Material: 316L Stainless Steel
- 2 Megapixel, 1080P Resolution
- Starlight, 120dB True WDR
- H.265 & H.264 Triple-streams encoding
- Max. 50/60 fps@1080P
- IVS (Optional)
- Multiple network monitoring: Web viewer, CMS(DSS/PSS) & DMSS
- IP68/IP67, IK10, NEMA 4X, PoE+
- Typical Application: Chemical plants, Port, Coastal highway, Shipbuilding, Islands and etc.



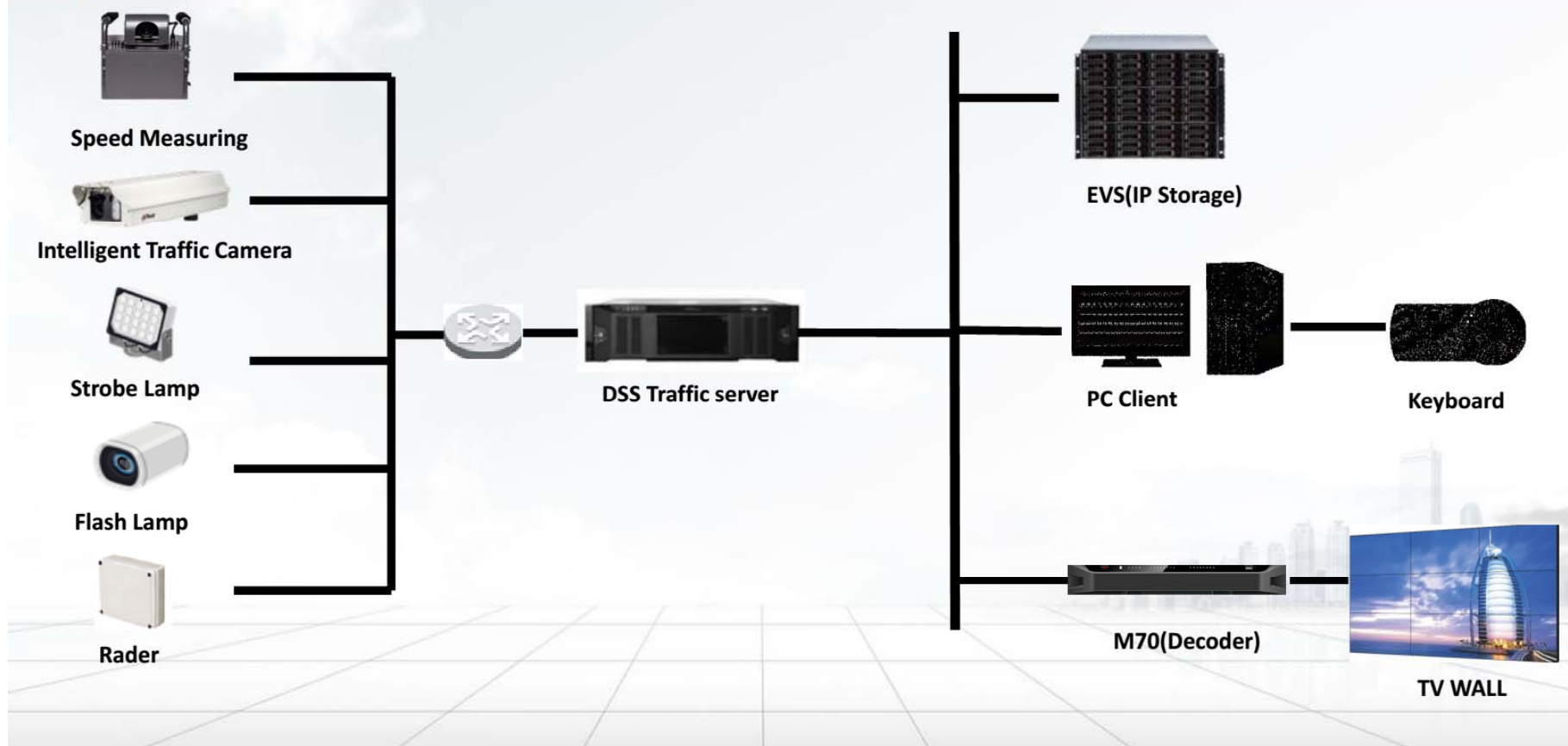
## Explosion-proof Products

### Camera Features

- Material: 316L Stainless Steel
- 1080P Resolution, 30x optical zoom
- Starlight, 120dB True WDR
- H.265 & H.264 Triple-streams encoding
- Max. 50/60 fps@1080P
- IVS
- Multiple network monitoring: Web viewer, CMS(DSS/PSS) & DMSS
- IP68/IP67
- Typical Application: Petrochemical industry (Oil field, Drilling platform, Oil pipeline), Chemical plants, Cotton fiber processing, Port, Power plant and etc.

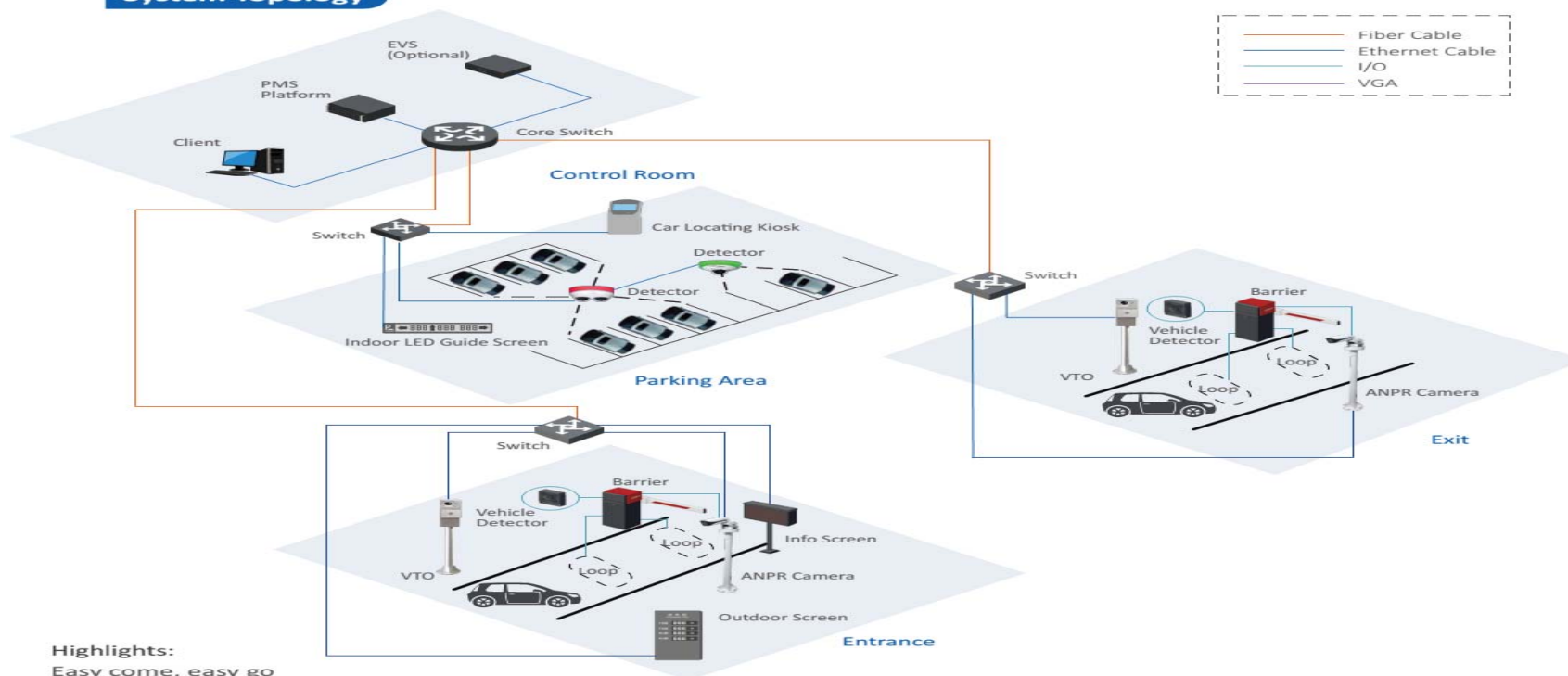


## System Topology



## SOLUTION STRUCTURE & TOPOLOGY

### System Topology



#### Highlights:

##### Easy come, easy go

- Help you find available parking space.
- Locate your car and pay to leave conveniently.

##### ANPR, video or loop trigger optional

- Offer more economical choice.
- Recognition rate higher than 95%.

##### Comprehensive surveillance

- Provide 7×24 surveillance with access camera and spot detection camera.
- Search the video record and image by date/time/license plate number.

##### Networking management

- Support centralized networking management of multiple parking areas and parking lots.

##### Open system

- Open system with rich interfaces, to meet different customer requirements. Easy integration with 3<sup>rd</sup> party payment system.

## Parking System Products

### Parking System

- Parking entry solution promote the efficiency of vehicle access
- Parking guidance solution help to find a free space easily
- LPR camera, recognize the vehicle plate automatically
- Includes the guidance screen/detection camera/ticket controller and etc

#### Access ANPR Camera

	Short Focus		Long Focus		
Model	ITC237-PW1A-IRZ ★ ★ ★	ITC217-PW1B-IRLZ ★ ★ ★	ITC237-PU1A-IRHL	ITC237-PU1A-HL	ITC217-PW1B-IRLZ10 ★ ★ ★
Image Sensor	1/1.9" CMOS	1/2.7" CMOS	1/1.9" CMOS	1/1.9" CMOS	1/2.7" CMOS
Max. Resolution	2MP (1920×1080)	2MP (1920×1080)	2MP (1920×1080)	2MP (1920×1080)	2MP (1920×1080)
Speed Range for LPR	0~40km/h	0~40km/h	0~40km/h	0~40km/h	0~40km/h
Licence Plate Recognition (LPR)	Support (Global)	Support (EU)	Support (Global)	Support (Global)	Support (EU)
LPR Monitor Distance	4~8m	4~15m	8~40m	8~40m	15~40m
Detection Mode	Loop & Video trigger	Loop & Video trigger	Loop & Video trigger	Loop & Video trigger	Loop & Video trigger
Special Function	Support to import white list, control barrier; Store, search and export the plate list, plate picture.	Support to import white list, control barrier.	Support to import white list, control barrier; Store, search and export the plate list, plate picture.	Support to import white list, control barrier; Store, search and export the plate list, plate picture.	Support to import white list, control barrier.
Electronic Shutter Speed	1/25~1/100000	1/25~1/100000	1/25~1/100000	1/25~1/100000	1/25~1/100000
Video Frame	60fps@1080P	30fps@1080P	60fps@1080P	60fps@1080P	30fps@1080P
Day/Night	ICR	ICR	ICR	--	ICR
Lamp	Built-in IR light	Built-in IR light	Built-in IR light	Built-in white light	Built-in IR light
Lens	4~8mm, Motorized	2.7~12mm, Motorized	5~50mm, Variable focal manually	5~50mm, Variable focal manually	4.7~47mm, Motorized
Ingress Protection	IP66	IP67	IP66	IP66	IP67
Interface	1×100M Ethernet, 2 I/O inputs, 1 relay output	1×100M Ethernet, 2 I/O inputs, 1 relay output	1×100M Ethernet, 2 I/O inputs, 1 relay output, 1 RS485, 1 RS232	1×100M Ethernet, 2 I/O inputs, 1 relay output, 1 RS485, 1 RS232	1×100M Ethernet, 2 I/O inputs, 1 relay output
Working Temperature	-30°C~+60°C (-22°F~+140°F)	-30°C~+60°C (-22°F~+140°F)	-30°C~+60°C (-22°F~+140°F)	-30°C~+60°C (-22°F~+140°F)	-30°C~+60°C (-22°F~+140°F)
Power	AC24V, PoE, Max. 15W	DC12V, PoE, Max. 11.5W	PoE+, Max. 25W	PoE+, Max. 25W	DC12V, PoE, Max. 13W

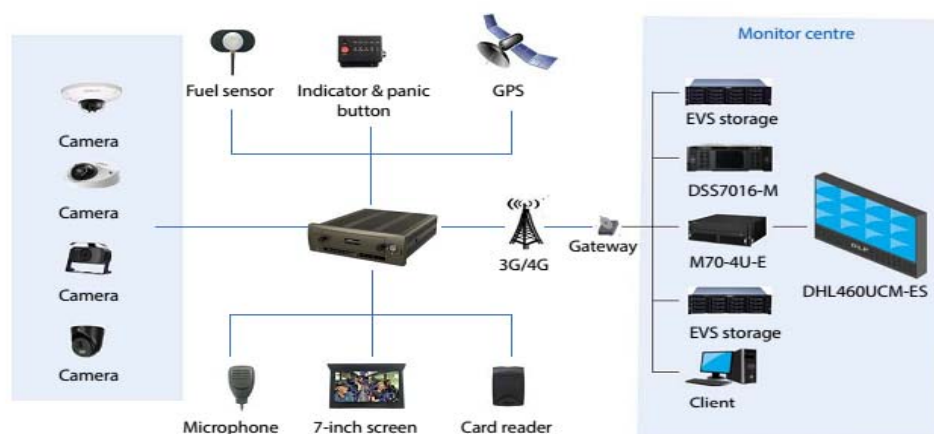
## Solution

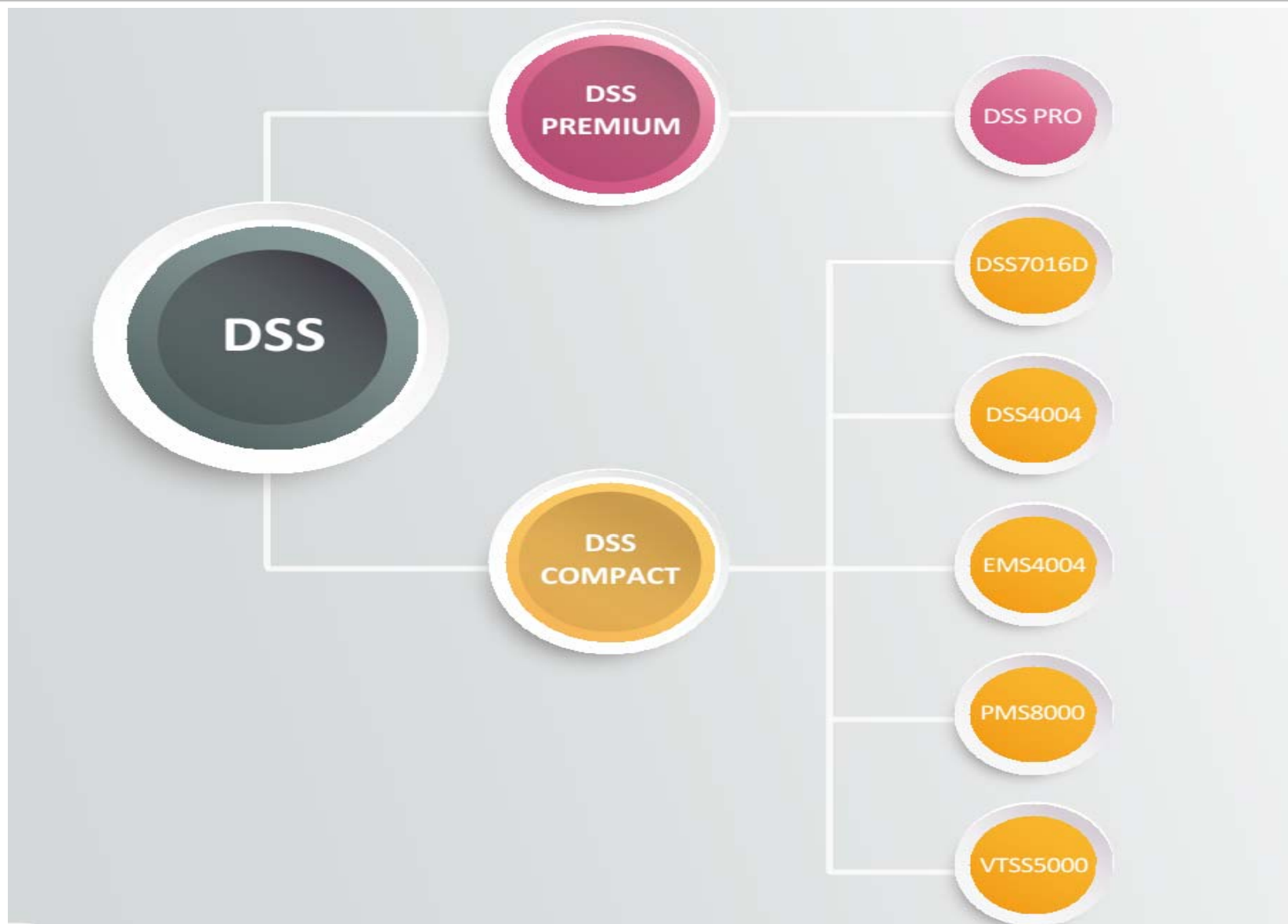


## Mobile Surveillance Solution

### Features

- Kinds of solutions for different applications, such as city bus/school bus/taxi/police car/train/truck.
- High-definition real-time recording
- Various accessories
- Reliable VMS help to improve vehicle management efficiency
- Vehicle location tracking, monitoring and information upload by GPS and wireless network: 3G/4G/Wi-Fi
- Comply with EN50155, E-Mark, ISO16750, ISO7637-2







## DSS PREMIUM

### DSS PRO

DSS Pro is a comprehensive software that provides reliable video-based solutions. Its capacity and add-ons can be scaled to adapt to various hardware devices. Add-ons and storage capacity are subscription based, lowering the cost of initial investment, while offering the flexibility to expand features as needed. It is best used in medium and large applications such as transportation and safe city solution.



### Easy to Deploy

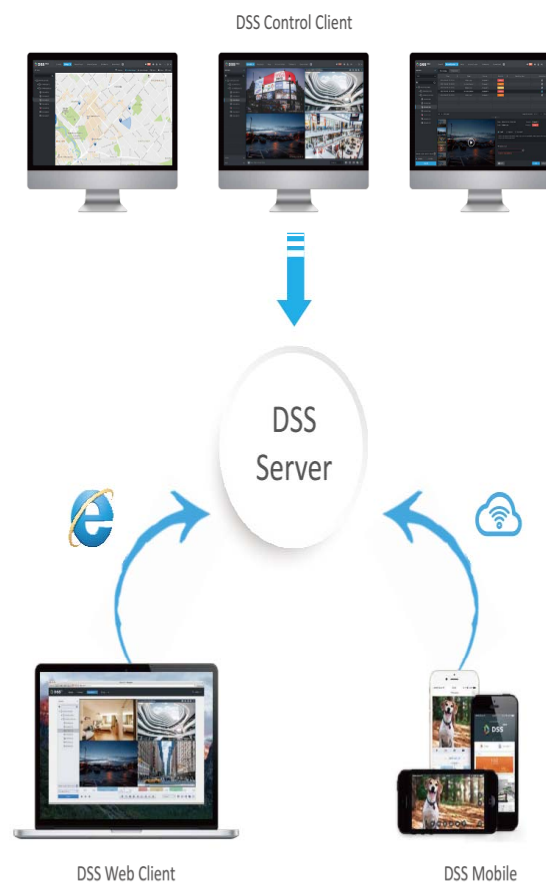
The DSS wizard makes system configuration and operation a breeze.

### Easy Expansion

Easy performance upgrade via distributed hardware extension.  
Easy function upgrade via add-ons.  
Easy capacity expansion via license subscription. Pay-as-you-go.

## DSS CLIENTS

The DSS Control Client, DSS Web Client, and DSS Mobile application provide instant, around-the-clock access to video surveillance, giving users a choice of viewing interfaces to best suit their needs.



## DSS COMPACT

### DSS7016D

DSS7016D is an All-in-One DSS server with pre-installed DSS software and Linux OS. It supports one system disk and 15 data disks. It is geared to medium-sized projects. Beyond its basic application as a CCTV management system, DSS7016D also integrates mobile DVR, an alarm system, access control, video intercom, and entrance control. It can be used in mobile and residential applications.



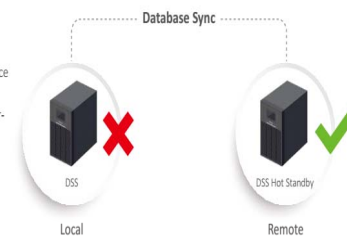
### Easy to Deploy and Expand

Plug & Play. No additional actions required except booting up the device.  
Multiple DSS7016D can be arranged in a master/slave structure to expand system performance.



### High Stability

A redundant power supply ensures the device always has power, automatically engaging standby power if a power source runs abnormally. DSS7016D also supports hot standby.



## CONTROL PRODUCT

### Matrix



M70-D



M70-4U-E



M60-12U

### Decoder



NVS0104DH-4K



NVD0405DH-4K



NVD0905DH-4I-4K



NVD1205/1505/1805DH-4K  
(Plug-in design)

### Keyboard



NKB5000



NKB3000



NKB1000

### KVM View Switcher



KVM0401VM-E100/ KVM0401HM-E100



KVM0801VM-E100/ KVM0801HM-E100

## LCD SPLICING SCREEN



### Physical Seam

Variety of patchworks to select



### Response Time

8ms fewer response time, no image ghosting



### Viewing angle

178°/178°(Horizontal/Vertical)



### Smart Control

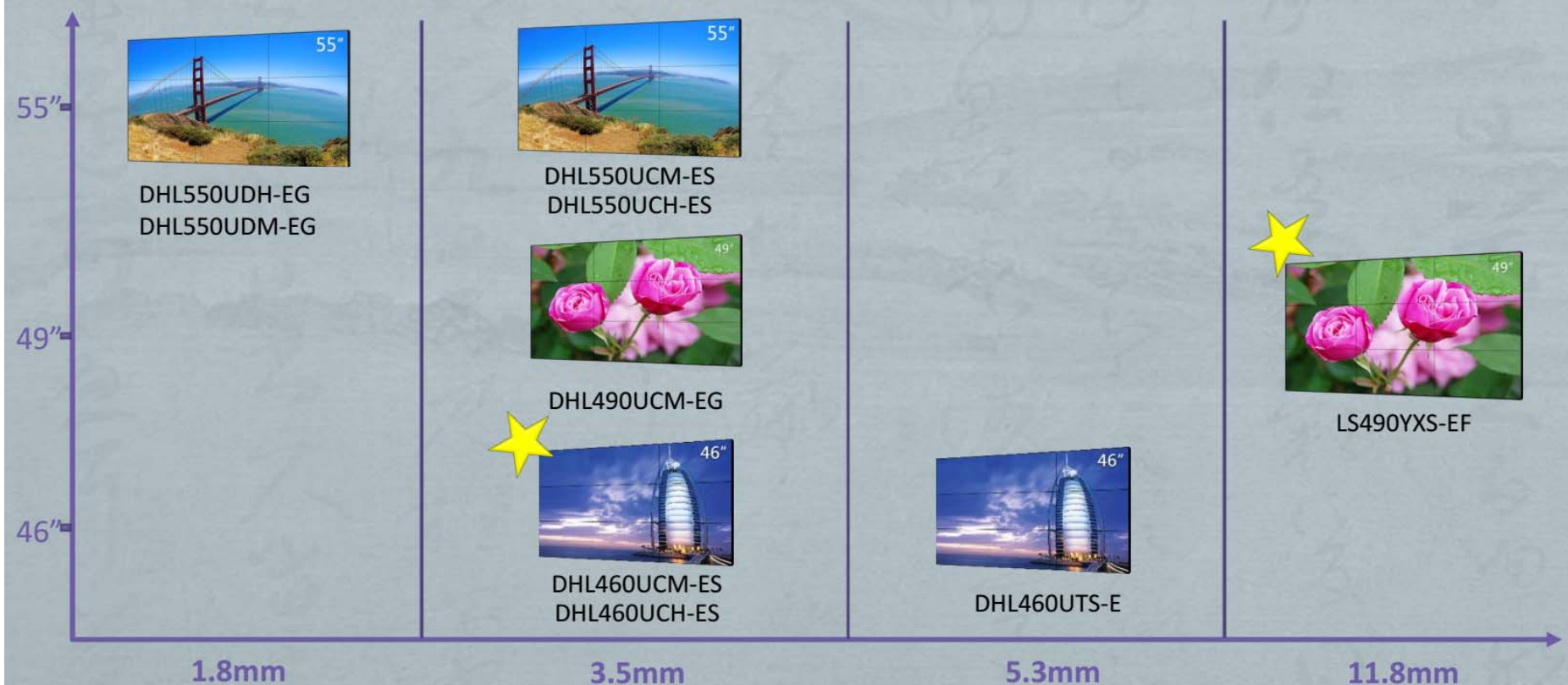
Intelligent brightness control, make the best display effect under different brightness environment;





## Display Product

### LCD SPLICING





## Display Product

### MONITOR

High-  
Protective



DHL27



DHL32



DHL43



DHL49



DHL55



DHL49-4K



DHL55-4K

Essential  
Security



LM17-L100



LM18-L100



LM19-L100



LM22-L200



LM24-L200

Light



DHL19-F600



DHL22-F600



DHL24-F600



DHL27-F600



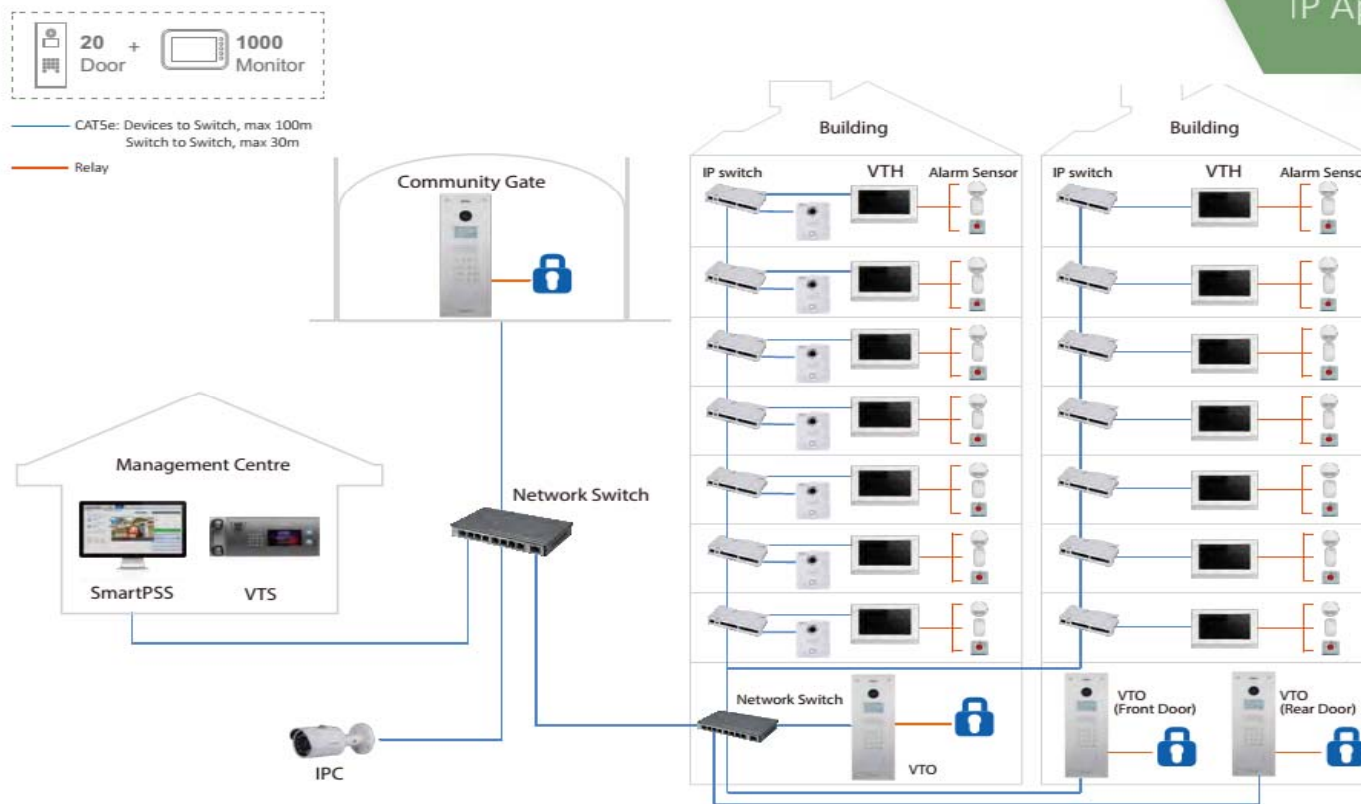
DHL32-F600



DHL43-F600

Monitor Size

## IP Apartment Solution <



Complete IP apartment solution with large scale and abundant functions. The whole solution integrates video intercom, real-time video surveillance and intrusion detection. Various authentication methods (password, RFID card) provide the most security. Calling management center and calling between residents provide home convenience and community management.

### Features



Video & Audio Call



Night Vision



Group Call



Emergency Call



Unlock Remotely



Alarm Integration



Video & Audio Messaging



IPC Surveillance

### Recommend



**VTO1210C-X**

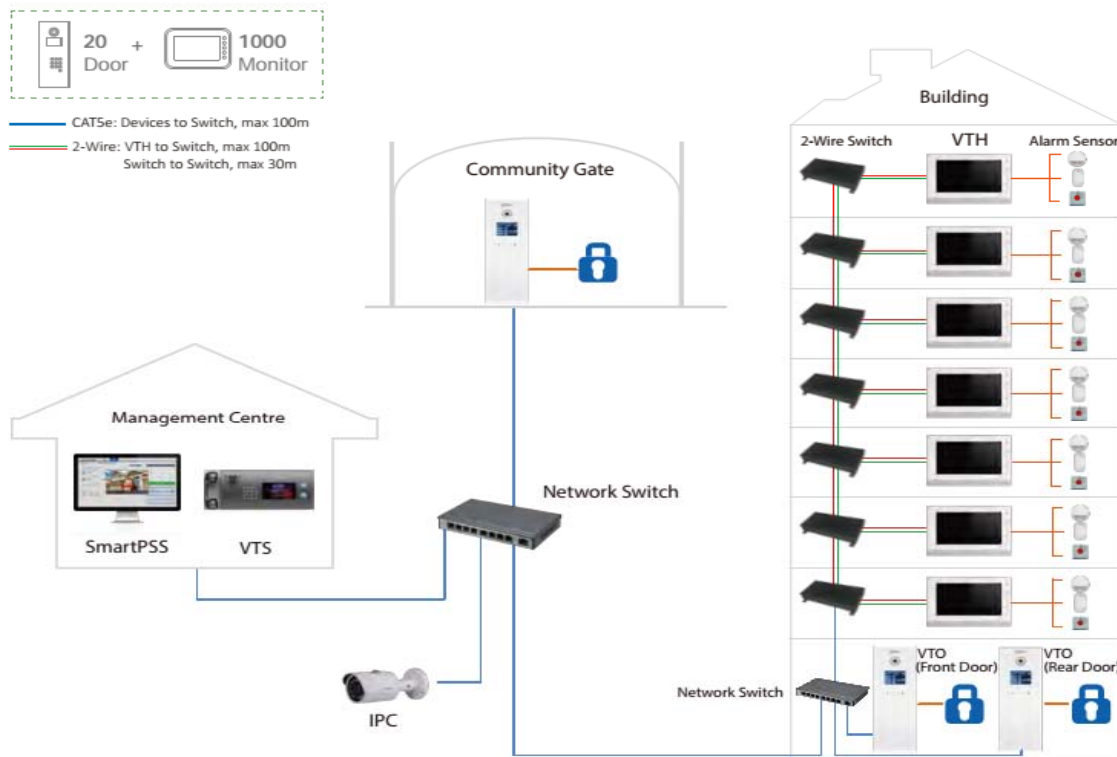
Unit Outdoor Station  
1.3MP COMS  
IP54, IK07



**VTH1550CH**

IP Indoor Monitor  
7" Capacitive

## IP 2-Wire Apartment Solution <



Use two wires to transmit both signal and power. 2-wire indoor monitors can access to Internet easily by special converter. The system adapts to multiple wiring environments easily and reserves all digital apartment functions. The system is designed to replace existing analog apartment system and make a full IP world.

### Features



Video & Audio Call



Night Vision



Group Call



Emergency Call



Unlock Remotely



Alarm Integration



Video & Audio Messaging



IPC Surveillance

### Recommend



#### VTO1220BW

Unit Outdoor Station  
1.3MP COMS  
IP65



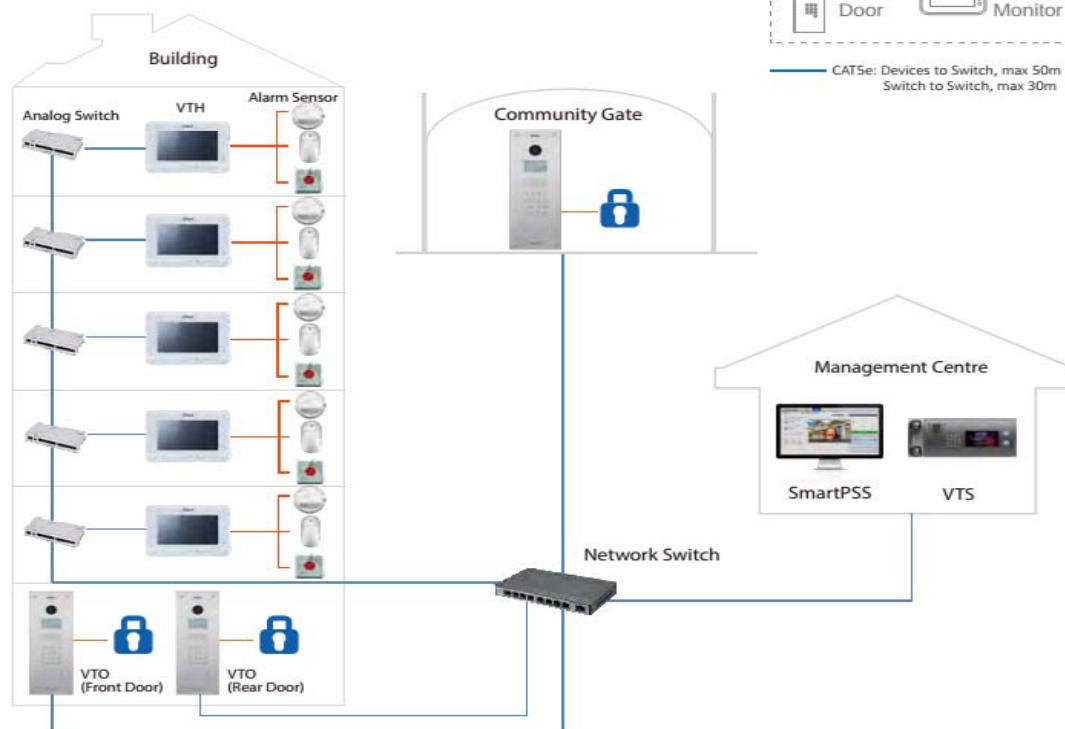
#### VTH5222CH

2-Wire Indoor Monitor  
7" Capacitive



## > Analog Apartment Solution

Analog apartment system provides simple installation. High video quality and nearly zero time delay exceed traditional analog experience. Cost-effective implementation gives users semi-digital solution.



### Features



Video & Audio Call



Unlock Remotely



Night Vision



Alarm Integration



Emergency Call

### Recommend



#### VTO1210C-X

Unit Outdoor Station  
1.3MP COMS  
IP54, IK07



#### VTH2020A

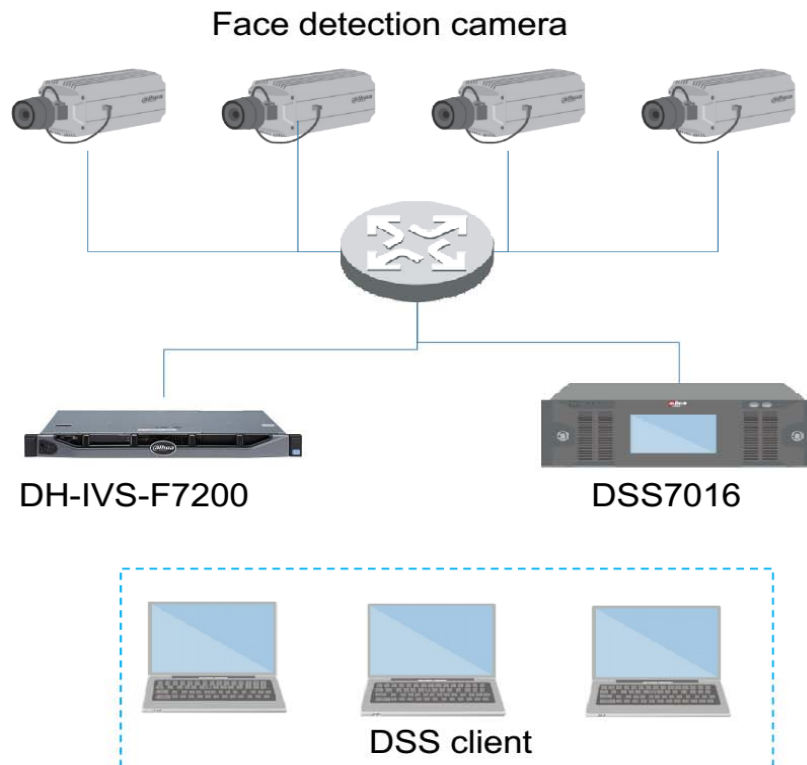
Analog Indoor Monitor  
7" TFT LCD





# Face Recognition

## Architecture



- Face detection camera : if there is any human face appearing in the video, and capture the face then send it to the rear-end for analysis and processing, it can activate snapshot, record and alarm;
- DH-IVS-F7000 : Realize Real time comparison of face image, register library search, Capture library search, register library rechecking and capture face image storage, support up to 4 channel . Storage face register library, capture feature library, include database. **Can be used alone without DSS platform.**
- DSS7016 platform: client, face detection business, alarm link and register library management.



