



# DSS' S New Features

V6.01.000

- Unified the firmware of DSS4004 and DSS7016D, it become true to Use the same procedure to upgrade
- When you use the “Configtool” to Upgrade, the username and password are Consistent with the “CONFIG SYSTEM”
- The username and Password of ssh respectively are “root” and “dh-qQ3j!” ,and when you modify the password of “CONFIG SYSTEM”, the password of ssh will be modified too, and it will become “7ujMko0+the Password of CONFIG SYSTEM”
- Add the recovery mode in startup mode, it will recovery the password of system
- Support 12 Group Raid

- |  |
|--|
| • Optimize the stability of hot spare .  |
| • DSS4004 support hot spare.   |
| • DSS pure software support hot spare.   |
| • Solve the problem of fail to upgrade via WEB .   |
| • DSS4004 support local storage.<br><a href="#"><i>DSS4004 has 4 hdd port, In actual use, we suggest that use two data hdd drives, because there will be the problem of high CPU if use 3 data hdd at the same time.</i></a> |
| • Auto register will support up to 2000 devices.   |
| • Auto register will support Dynamic Multi-connect.  |
| • Update the SDK version to the latest of Hikvision.   |
| • Solve the problem of failure alarm storage, when set the pre record on DSS WEB and the NVR or IPC has no local storage   |
| • Support 8000 online users.   |

- Release the Pure Software version
- Support Video Intercom
- Support the People Count
- NKB1000 control the Preview and TV Wall interface of DSS Client by connect the USB port of PC.
- In Preview, it support to display the Emap resource in window.
- Get back the system's password

- **Operating System**

Centos 6.7 64-bit

- **Hardware**

Memory@8GB

System Disk@1TB

Ethernet port@1000Mbps

- **ISO File**

Pure software installed for the first time, need to burn the ISO file into U disk images file, then the server start from U disk and start the installation. [Please refer to “DSS Pure Software Version Installation Guide”](#)

- **Bin File**

After initial ISO installation, can upgrade the DSS version by “Configtool “, just like DSS7016D or DSS4004

- **License**

After installed the pure software, system will support 100 ch based video for 30 days ;

you can apply for a 30-day value-added function trial, at present, including POS, People Count, Video Talk, Trial only free 100 channel and 30-day;

if purchase the add-on function, it will be indefinite period;

- Entrance


**DSS**  
Digital Surveillance System

system ▾ | Help | Exit | About | **License**

**General** | Business | Cascade | System | Statistics

Org | Account | Device | Server

General Org | Logic Org

| Org Name | Upper Org | Operation   |
|----------|-----------|---|
| root     |           |  |

Total 1 record(s) | << 1 / 1 >> | Go to page


- Trial

## DSS

Digital Surveillance System


Trial

You can apply for a 30-day value-added service trial

 In trial: Basic Video, POS, People Count, Video Talk  
Trial expire on:2016-02-24 22 day(s) left.

Step1


Export trial license file

 Click "Export" to export trial license file, and contact salesman for application of activation file.

Export

Step2

Import Activation File

 Update activation file provided by salesman (suffix is ".dat"). **This operation cannot be reversed, be careful!**

Import

Buy

To get permanent usage permit, please buy corresponding module.

- Purchase

## DSS

Digital Surveillance System

Trial

You can apply for a 30-day value-added service trial

Buy

To get permanent usage permit, please buy corresponding module.

Step1

Select Module and Channel

Select module and channel you want to buy (must be integral multiple of 100), export license file, and contact salesman to buy.

Basic Video

2000

POS

100

People Count

100

Video Talk

100

Export

Step2

Import Activation File

Update activation file provided by salesman (suffix is ".dat"). **This operation cannot be reversed, be careful!**

Import



## How to Apply?

1. Trial : Export Trial License file

Purchase : Select module and channel you want to purchase, and Export License file

2. Contact the salesman, salesman sent the “License file”to : [xu\\_aiwei@dahuatech.com](mailto:xu_aiwei@dahuatech.com); and cc to : [shen\\_jieling@dahuatech.com](mailto:shen_jieling@dahuatech.com); 。

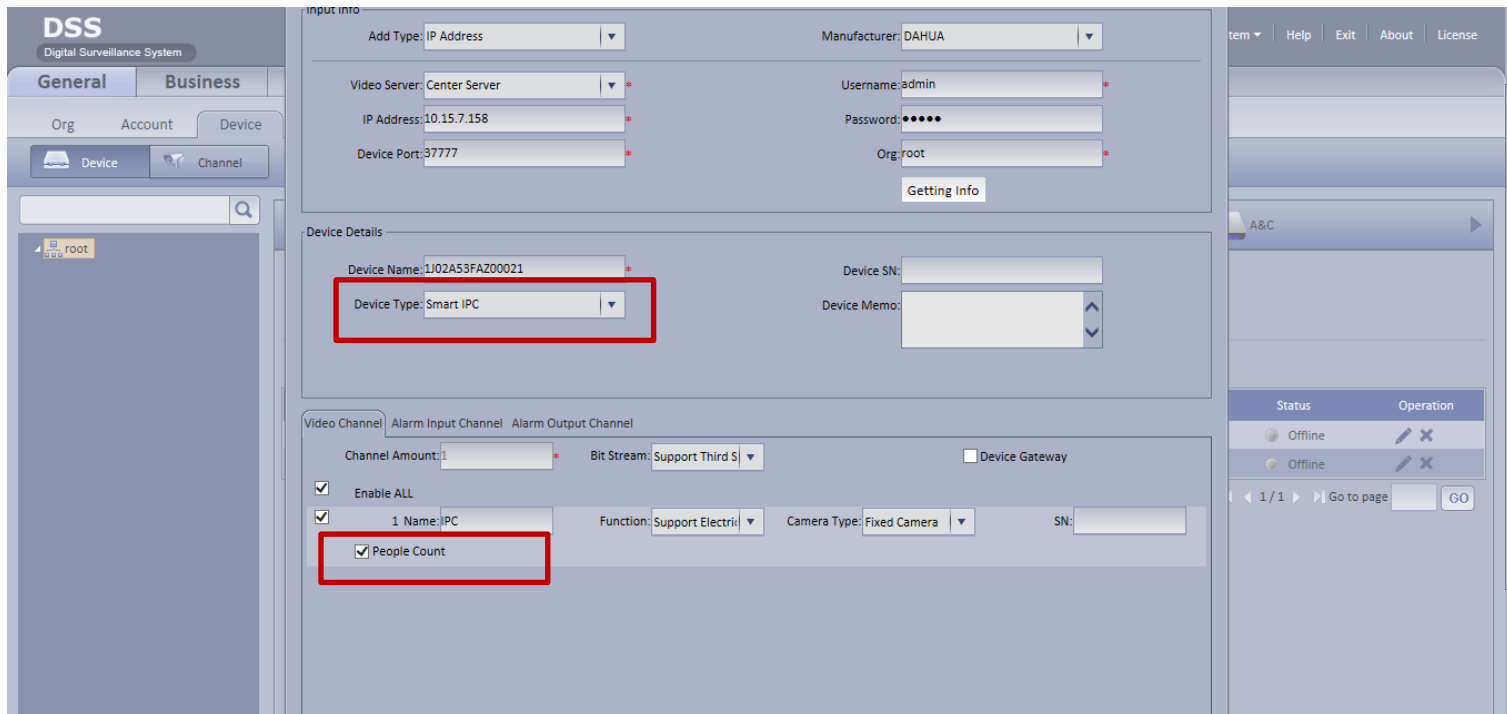
3. After we offer the activation file, enter the license interface and import this file and reboot, system will be ok.

### *Note :*

- *System will support 100 ch and 30 days based video for free.*
- *This version , the channel nums can only be multiples of 100.*

# People Count

- Add Smart IPC and login its WEB to configure the people count rules.
- Enable the option :“People Count”



**DSS**  
Digital Surveillance System

**General** | **Business**

Org | Account | Device

Device | Channel

root

input info

Add Type: IP Address | Manufacturer: DAHUA

Video Server: Center Server | Username: admin

IP Address: 10.15.7.158 | Password: \*\*\*\*\*

Device Port: 37777 | Org: root

Getting Info

Device Details

Device Name: LJ02A53FAZ00021 | Device SN:

Device Type: Smart IPC | Device Memo:

Video Channel | Alarm Input Channel | Alarm Output Channel

Channel Amount: 1 | Bit Stream: Support Third S | Device Gateway

☒ Enable ALL

☒ 1 Name: IPC | Function: Support Elektrik | Camera Type: Fixed Camera | SN:

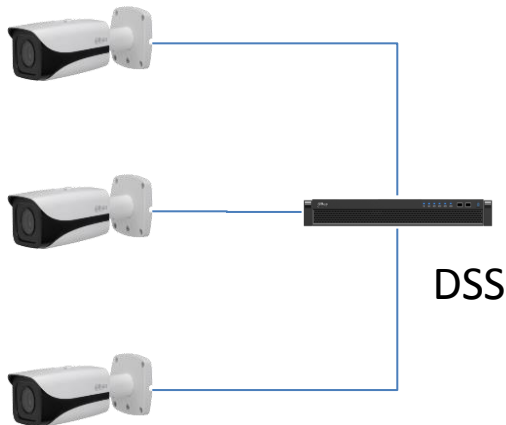
☒ People Count

Status | Operation

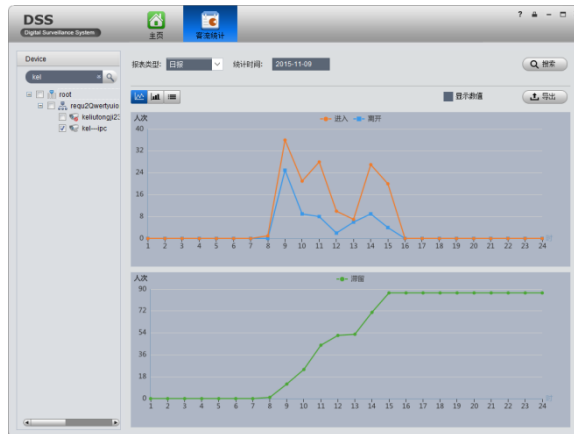
Offline | Offline

1 / 1 | Go to page | GO

# People Count

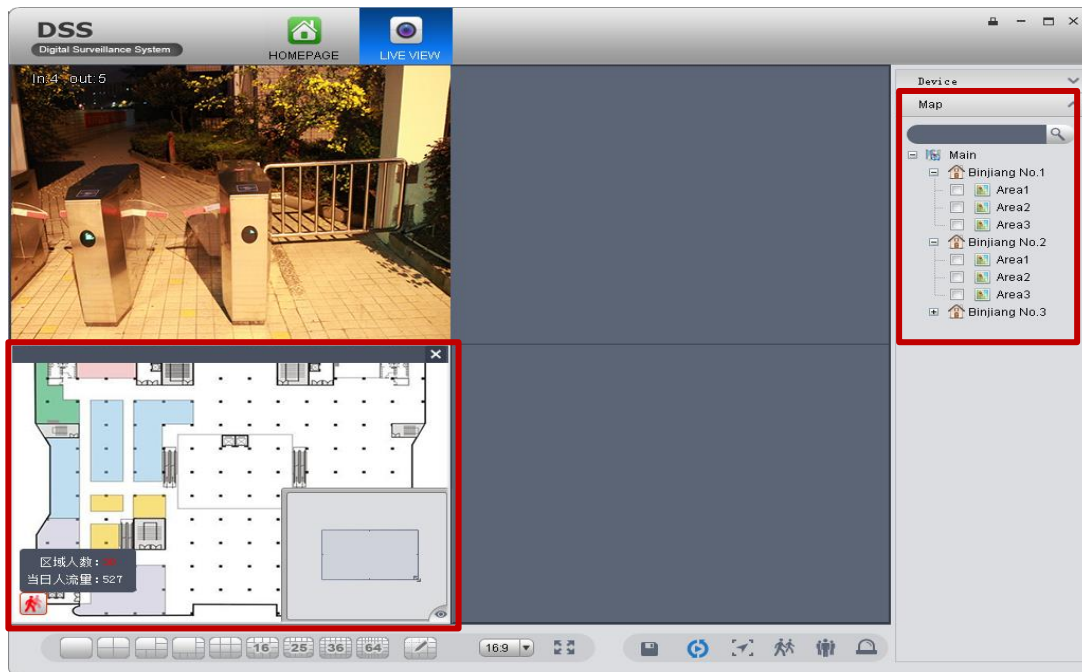


## Smart IPC



It is to make **statistics of enter and leave people in the specific area** of the image, and finally it comes out the statistics data, providing kinds of data reports such as daily report, monthly report and annual report. There are two ways to present: **line chart and histogram**, providing data exporting function.

# E-MAP and Preview



- After add map resources on web, the client will show map list simultaneously in preview interface.
- Can drag the map to the preview window, can close manually.
- Can double click or drag the video on the map to the corresponding window and preview

- Login the web of VTO and finish configuration.
- Configure the VTH.
- Centre Control Number : 888888
- IP Address of SIP Server is IP of DSS, the Port is : 5080

IP VDP Door Station Web Server V1.0

System Config

- > Local Config
- > LAN Config
- > Network Config
- > Video Set
- > User Manager
- > FingerPrint Manager

Info Search

Logout

Local Config

Sensitivity of fill light to open: 60

VTO Connecting Time: 120

Device Type: Villa Station

Reboot Date: Tuesday

Version Info: 2016-01-14 V1.0.0.0

Centre Control Number: 888888

Default Refresh OK

IP VDP Door Station Web Server V1.0

System Config

- > Local Config
- > LAN Config
- > Network Config
- > Video Set
- > User Manager
- > FingerPrint Manager

Info Search

Logout

TCP/IP

FTP Config

SIP Server Config

Port Config

IP Address: 10.15.6.94

Port: 5080 (1~65535)

Username: 01018001

Password: .....

SIP Realm: VDP

IP VDP Door Station Web Server V1.0

System Config

- > Local Config
- > LAN Config
- > Network Config
- > Video Set
- > User Manager
- > FingerPrint Manager

Info Search

Logout

LAN Config

Building No.: 1

Building Unit No.: 1

VTO No.: 8001

Call VTS Time: 00 : 00 To 23 : 59 ☐ Call VTS Or Not

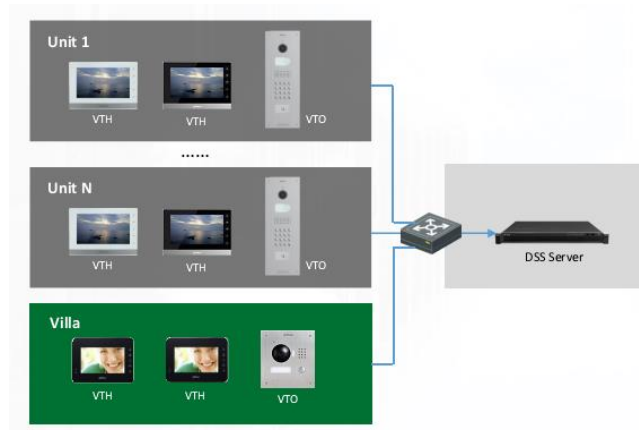
Support Building: ☒ Turn on ☐ Turn off

Support Unit: ☒ Turn on ☐ Turn off

Server Type: VTNC

Warning: The device needs reboot after modifying the config above.

Default Refresh OK



## Video Intercom

- Video call between control center and outdoor station
- Audio call between control center and indoor monitor
- Control the access of outdoor station remotely

## Push Notification

- Push notification such as advertisements, daily news and delivery notice from control center to indoor monitors

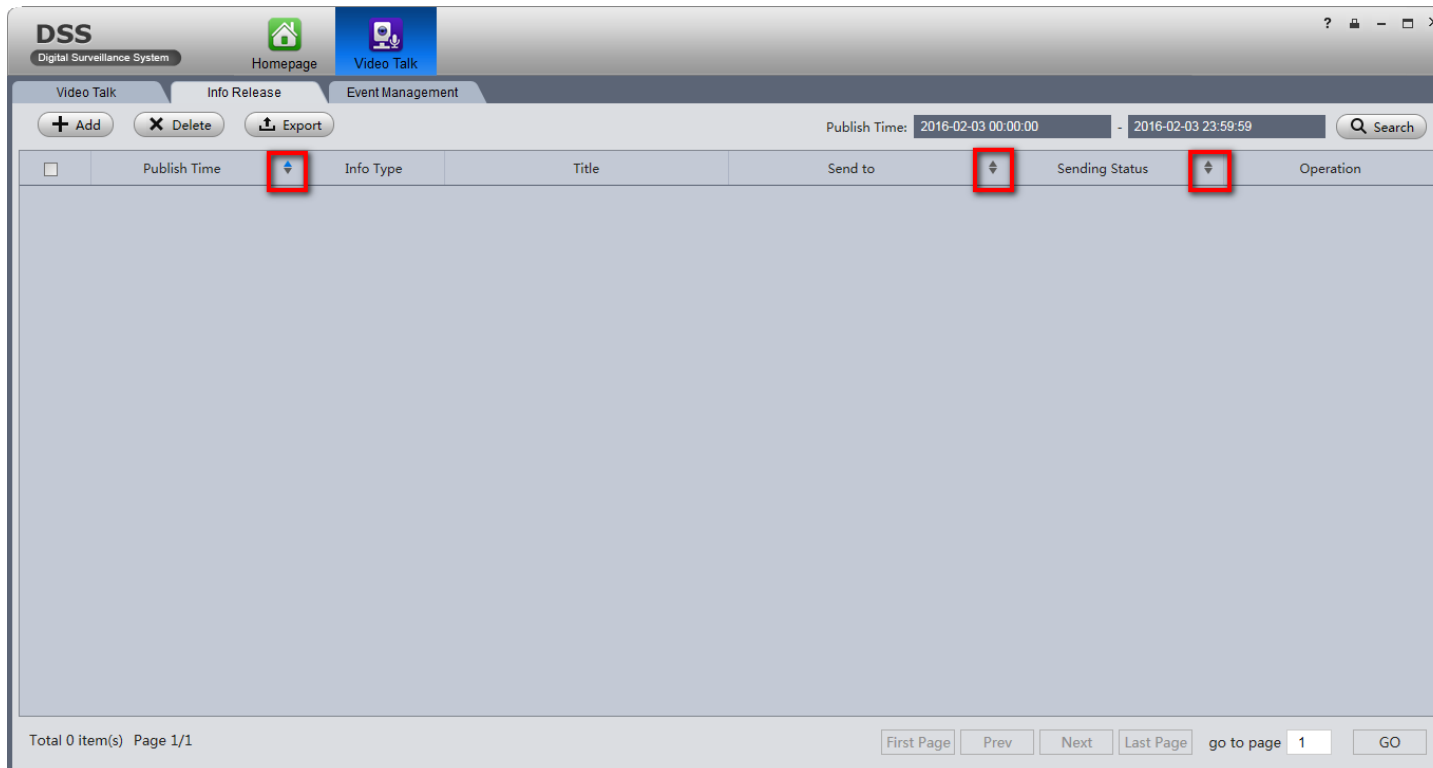
## Alarm Management

- Alerts along with link video will be sent to the control center for emergency handling once an alarm is triggered by any sensor connected to indoor monitors



\*SIP-based communication, the SIP server is integrated in the DSS. Don't support WLAN Mapping

- Support Order



**DSS**  
Digital Surveillance System

Homepage Video Talk

Video Talk Info Release Event Management

+ Add X Delete Export

Publish Time: 2016-02-03 00:00:00 - 2016-02-03 23:59:59 Search

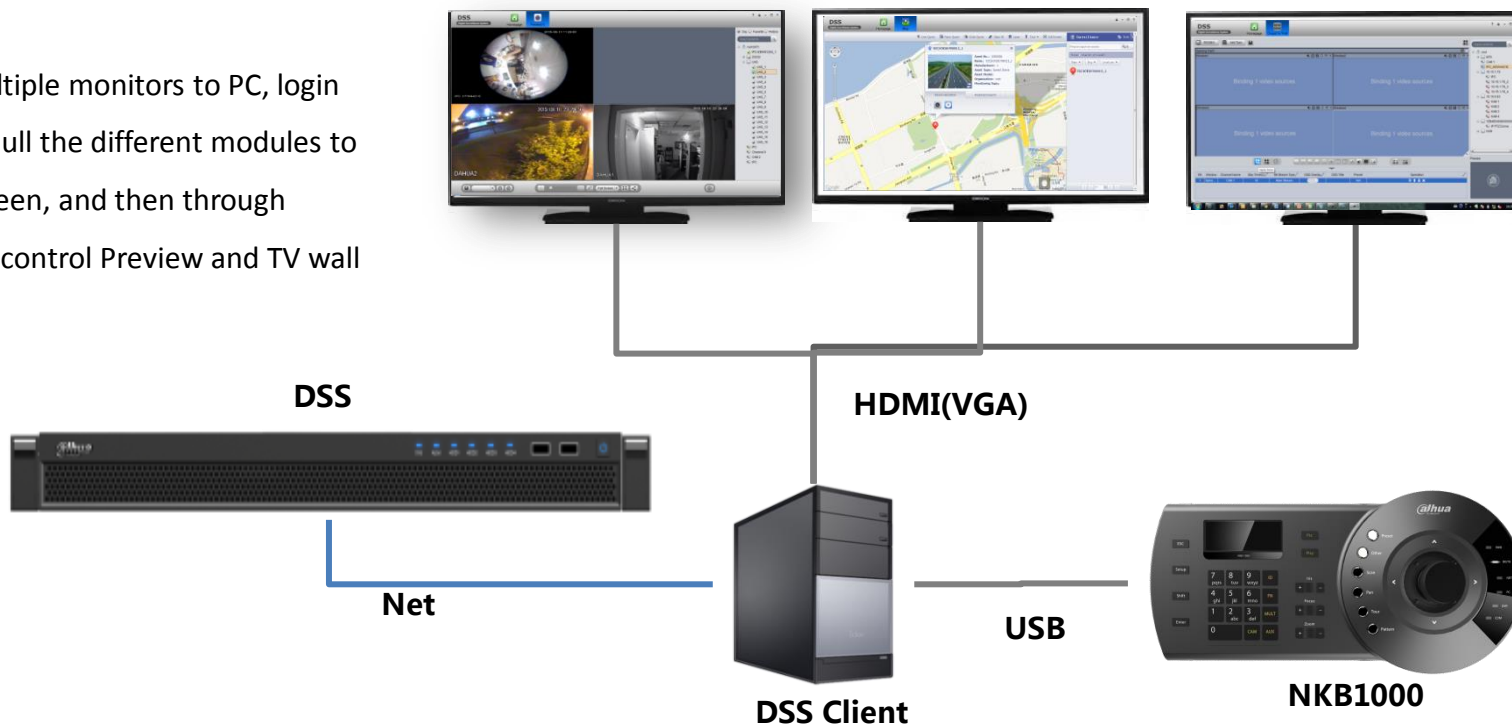
| <input type="checkbox"/> | Publish Time | Info Type | Title | Send to | Sending Status | Operation |
|--------------------------|--------------|-----------|-------|---------|----------------|-----------|
|--------------------------|--------------|-----------|-------|---------|----------------|-----------|

Total 0 item(s) Page 1/1

First Page Prev Next Last Page go to page 1 GO

# NKB1000 Control Preview and TV WALL

Connect multiple monitors to PC, login  
DSS Client, pull the different modules to  
different screen, and then through  
NKB1000 to control Preview and TV wall





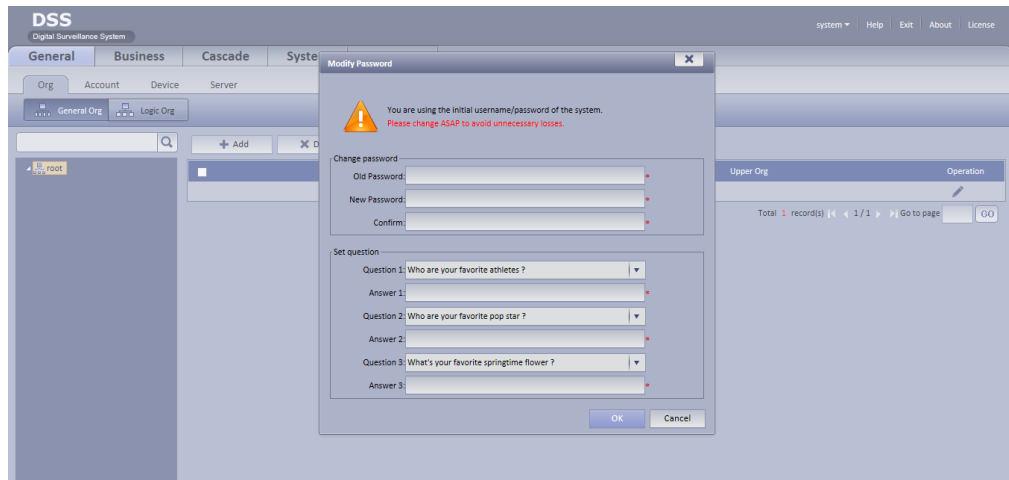
# Get Back Password

## WEB

- When login system for the first time, it will pop up change passwords and get back password interface .

### Note :

- For the safety of system, modify the initial password timely , and set the answers to find password, avoid forgot password and can't normal login .;
- after change the password, the interface will not pop up, and there is no entrance to configure, it will be optimized in next version.



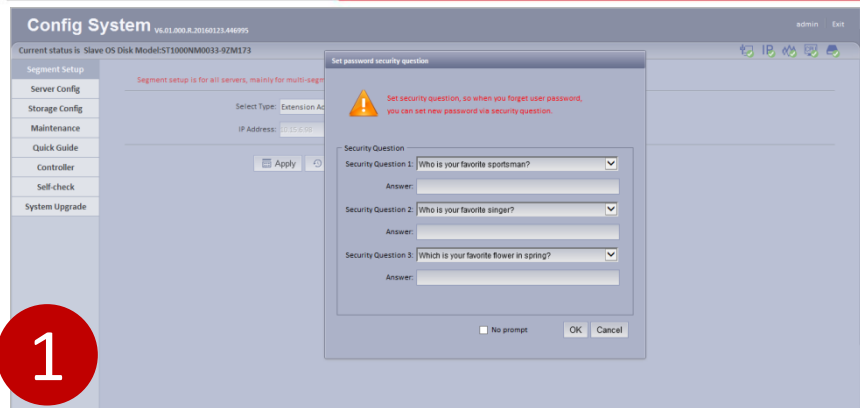
## CONFIG SYSTEM

- When login system for the first time, it will pop up change passwords and get back password interface .
- If you don't need tip any more, you can enable the option: "No Prompt".
- After setting the answer, when login with wrong password , it will show the retrieve password entry, answer questions and to reset the password.

### *Note :*

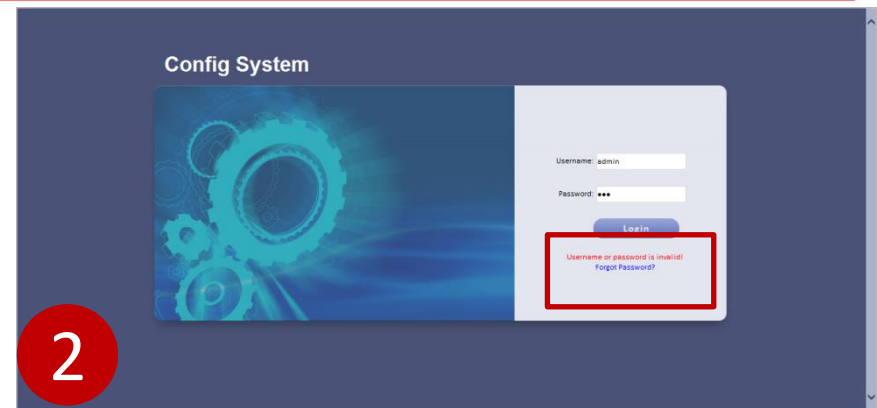
- For the safety of system, modify the initial password timely , and set the answers to find password, avoid forgot password and can't normal login ;
- after change the password, the interface will not pop up, and there is no entrance to configure, it will be optimized in next version.

# Get Back Password



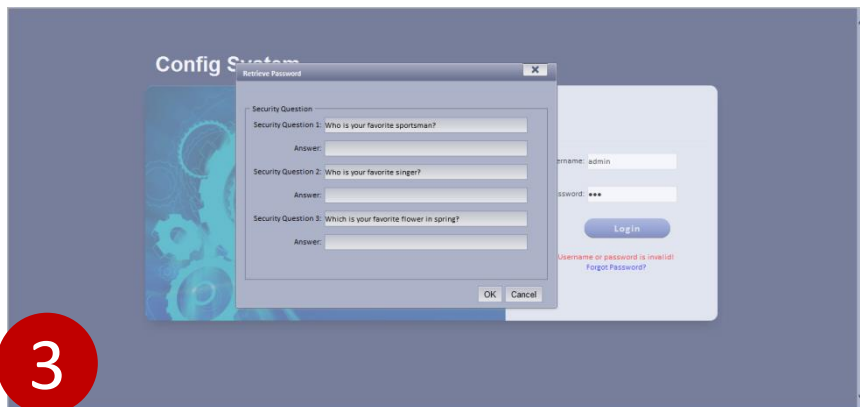
1

Set the answer of question to get back the password



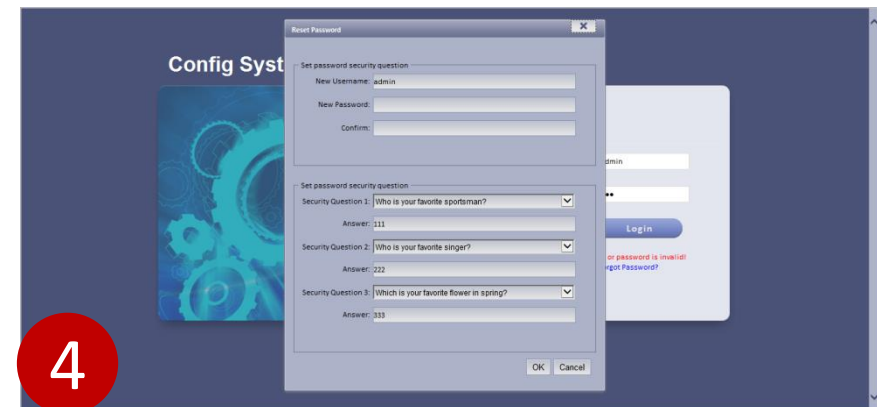
2

When forget the password, it will show "Forgot Password"



3

Input the answer.

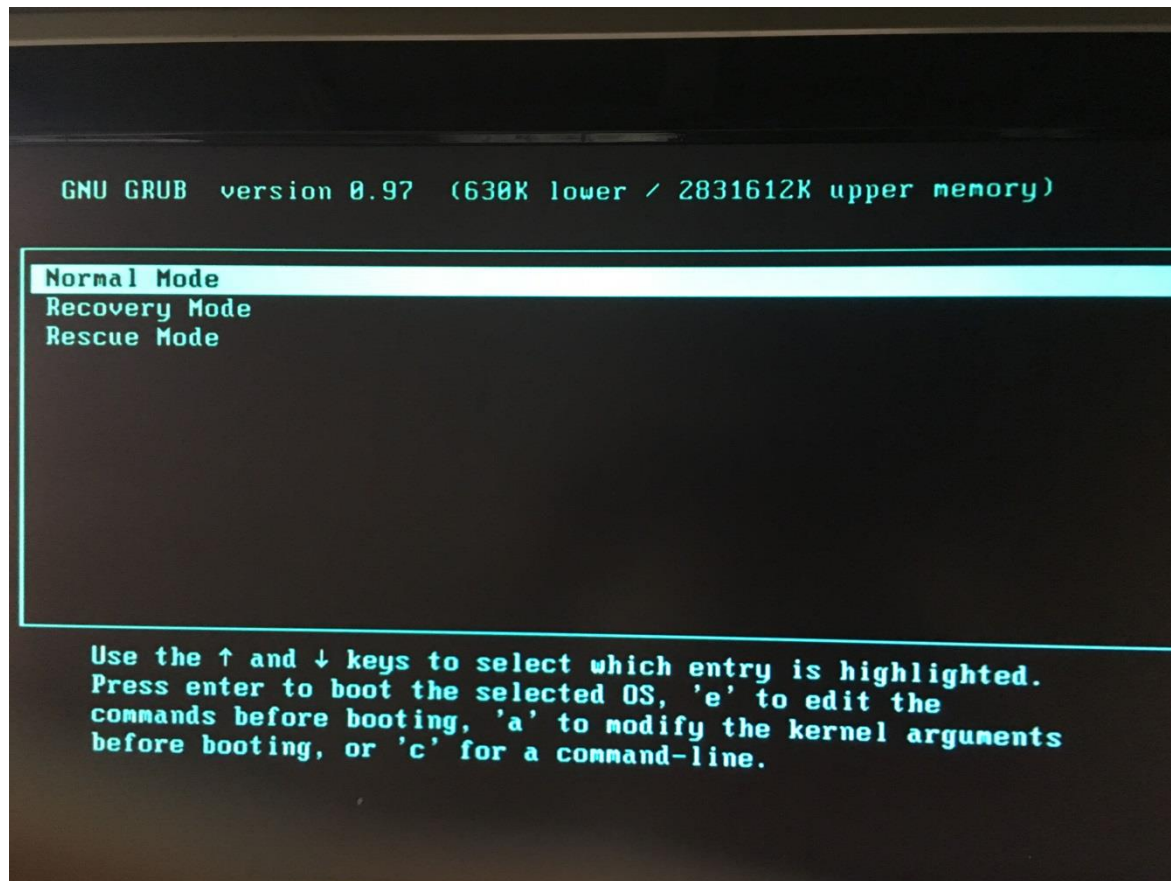


4

Reset the password.

# Recovery Password

Connect a display and a keyboard to DSS, then restart manually , press the Esc key , system will enter the following interface, select "Recovery Mode", after the machine up, the password will back to default





***Dahua Technology  
Make Your Life Safer***