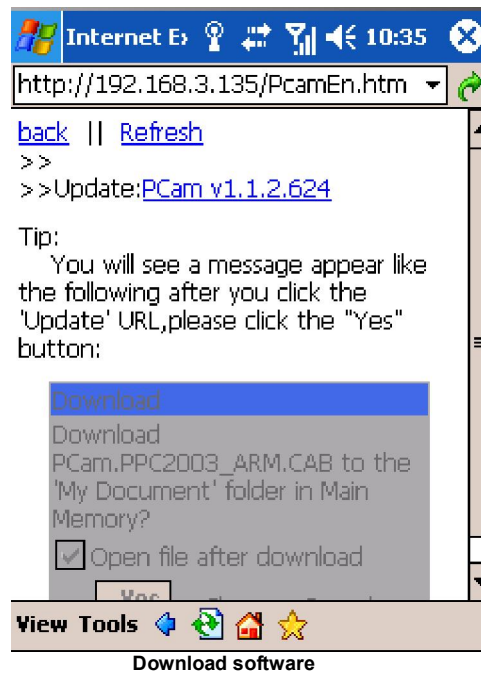
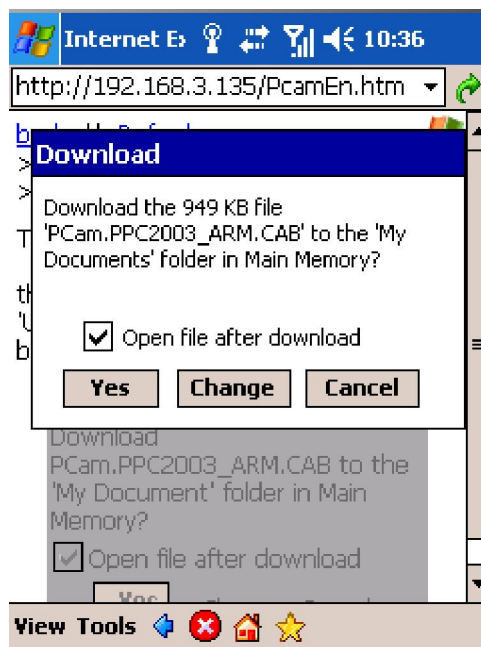


below is the instruction on Windows mobile phones for your reference:

STEP1: Firstly activate the network access on mobile phone and then run "Internet Explorer". Input the server's address and the connection is built up shown as below:

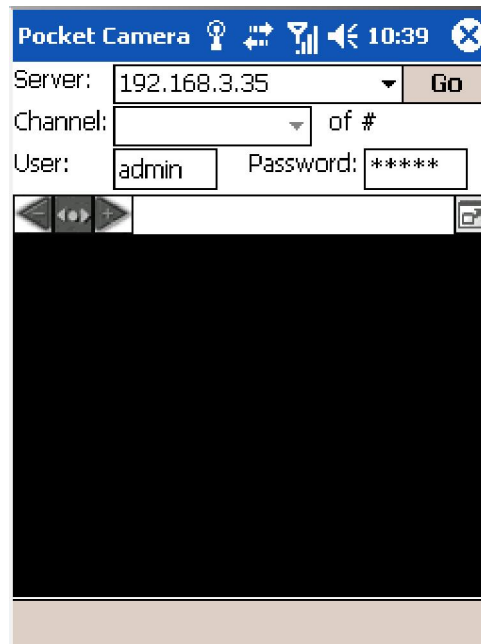


STEP2: Click on the software name. A dialog box pops up:



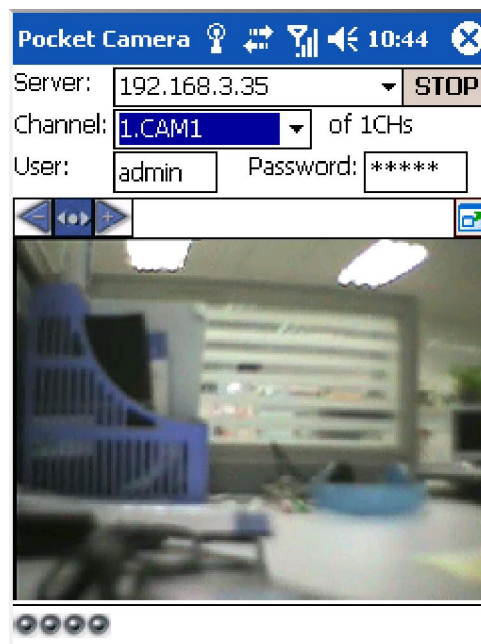
STEP3: Click “Yes” to start downloading and installing:

STEP4: PCam will be opened automatically after installed



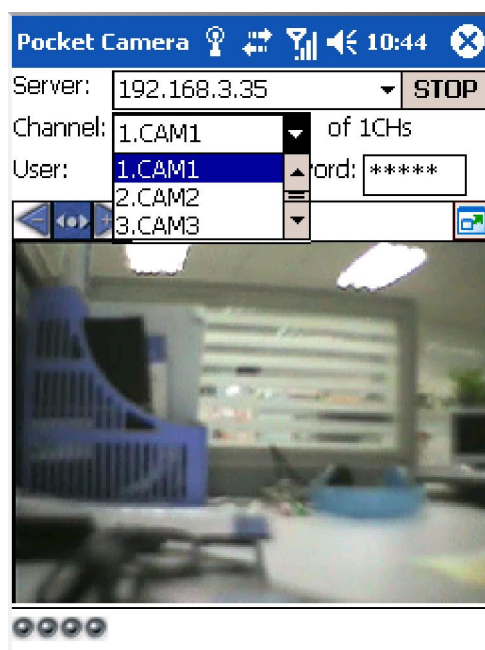
Login interface

STEP5: Input the server's address, ID and password respectively in the columns of “Server”, “User” and “Password”, and click “Go” to log on the server. It will show the picture if access successfully.



Logon system successfully

STEP6: Camera one is the default channel after login. Change the channel in rolling-down menu of "Channel":



Channel choose