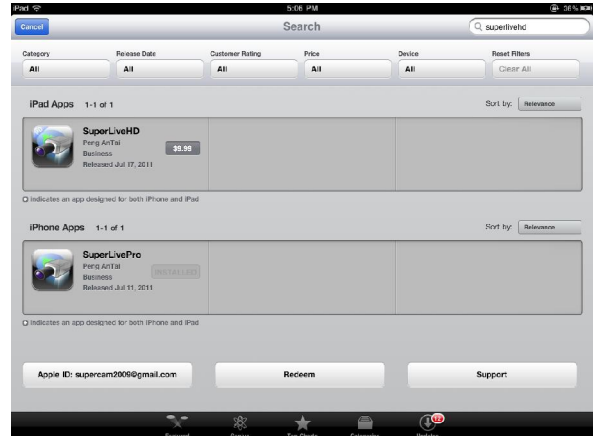


Appendix 1. Software Installation

(Only available for iPad)

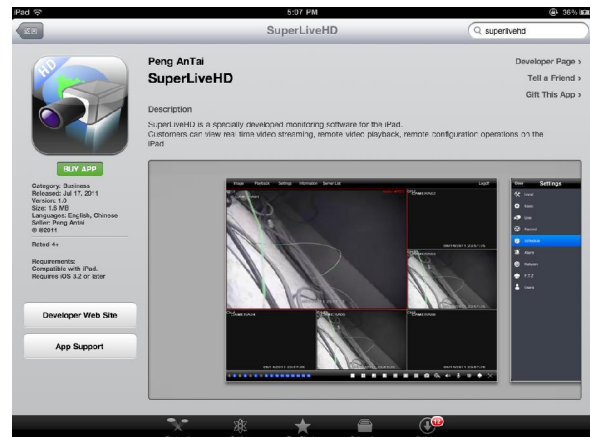
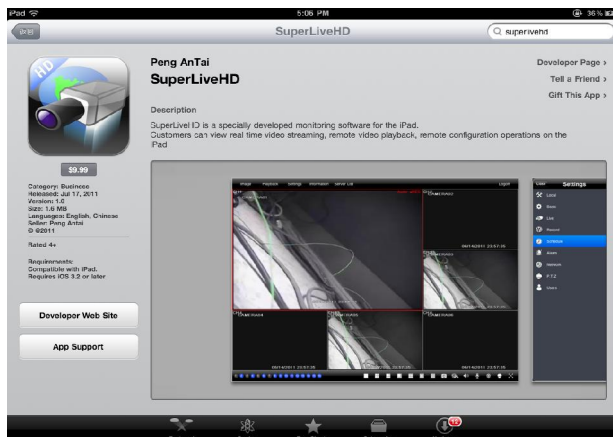
Software Installation for iPad

1. Directly install from Ipad



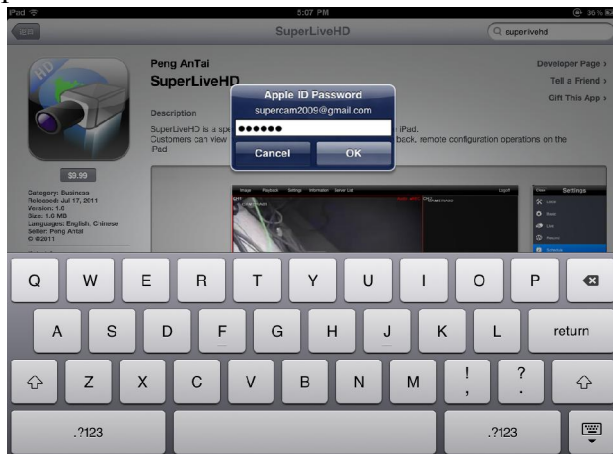
Step 1: Open App Store function of Ipad

Step 2: Enable Search function to search “SuperLiveHD”



Step 3: Click “\$9.99” button.

Step 4: Click “BUY APP” button.



Step 5: Enter user name and password to give the payment information, and then the software will be installed automatically.

2. Install from PC.



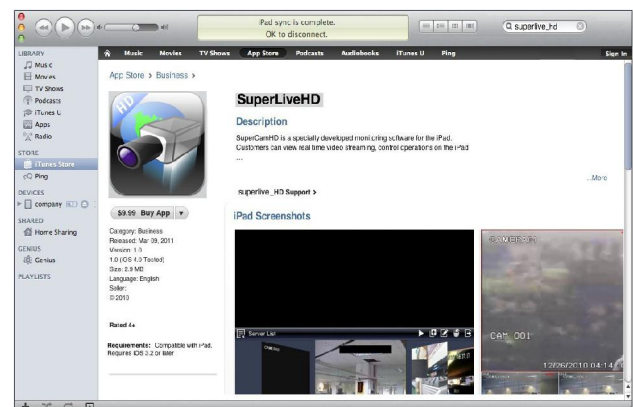
Step 1: Install iTunes and login.



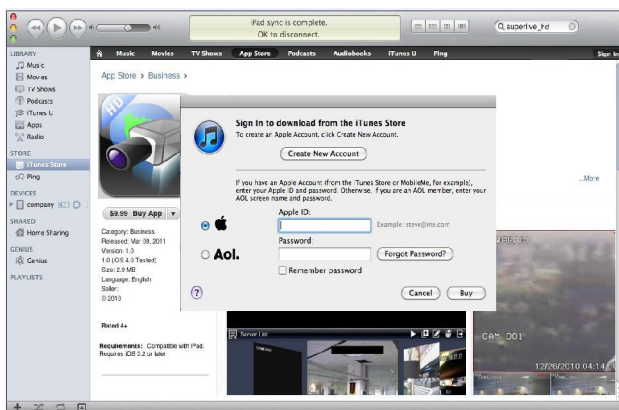
Step 2: Connect iPad and PC.



Step 3: Enable Search function to search “SuperLiveHD”.



Step 4: Click “\$9.99 Buy APP” button.



Step 5: Enter Apple ID and Password to give the payment information.

Step 6: Select “synchronously Apps” and then click “Sync”.



Appendix 2. Operation Instruction For SuperLiveHD

1. Login and Server List

Input server's IP address (or domain name), user name and password

Click "Remember server" to save the setting; click ▼ button user can quick input saved server address, user name and password.;

If failed connecting, please check below points;

- 1.) Check the network connection to your iPad/iPhone.
- 2.) Check if the server address input is invalid.
- 3.) Check the username and password, please note that they are case sensitive; and make sure no spacekey entered in each line;
- 4.) Try changing the DVR's HTTP port and DATA port; in some countries, some ports may be blocked by carriers.

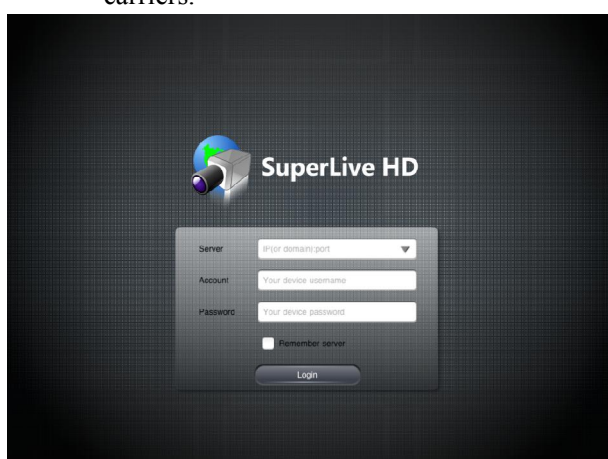


Fig 1

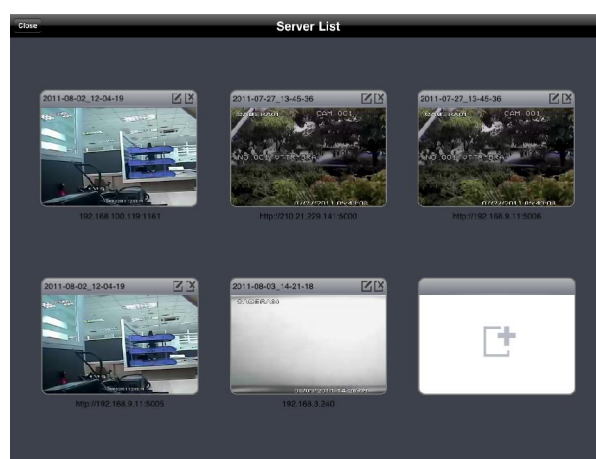


Fig 2

Server	Input server's IP address (or domain name); Click ▼ button to enter the server list and select.
Account	Input username
Password	Input password
Remember server	Click "Remember server" to save the current device to server list

2. Main Interface

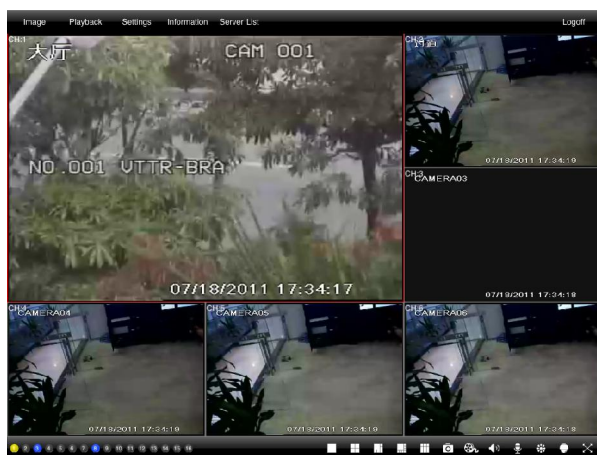


Fig 3

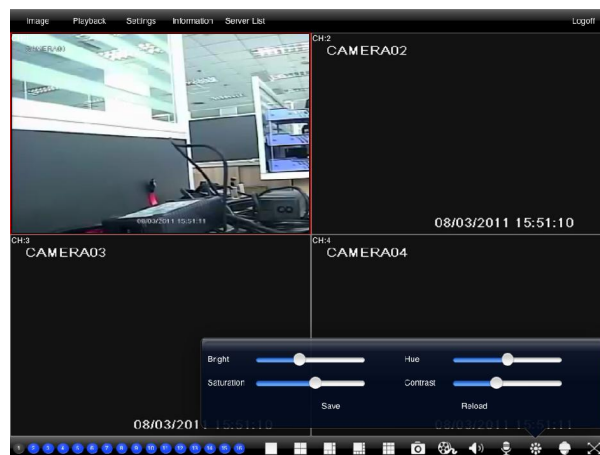


Fig 4



Fig 5

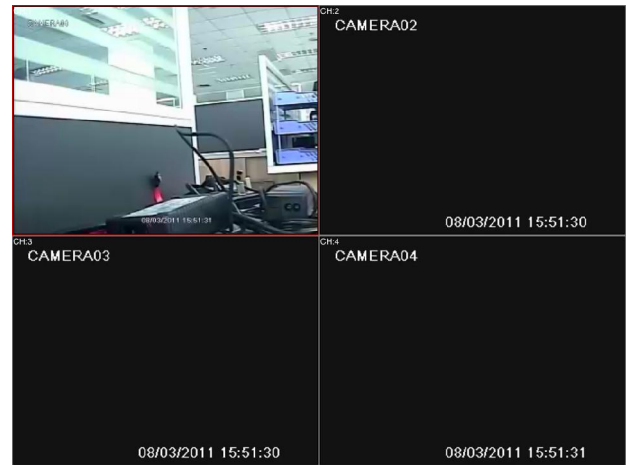


Fig 6

Icon	Function Description	Icon	Function Description
	View history snapshots of the device (as shown in Fig7).		Local record.
	View recordings, including local and remote playback (as shown in Fig9).		Live audio
	Configuration, including local and remote configuration.		Mic on/off.
	Check device information.		Color. Click it to enter into Color adjustment pannel (as shown in Fig 4).
	Server list.		PTZ control. Click it to enter into PTZ control panel (as shown in Fig5).
	Snapshot.		Full screen.(as shown in Fig6)
		Division mode.	
		Channel buttons.	

3. Image Review Interface

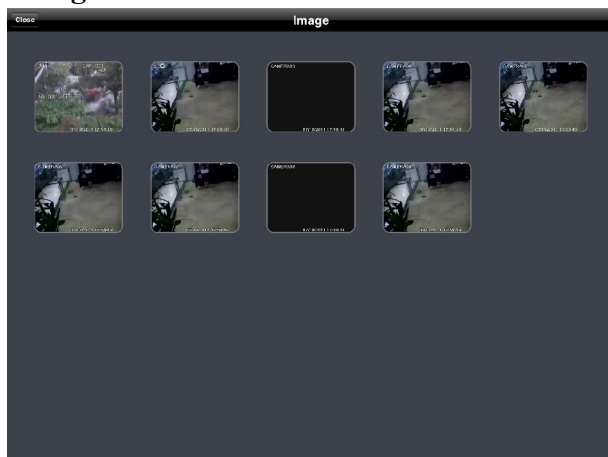


Fig 7



Fig 8

4. Playback Interface



Fig 9

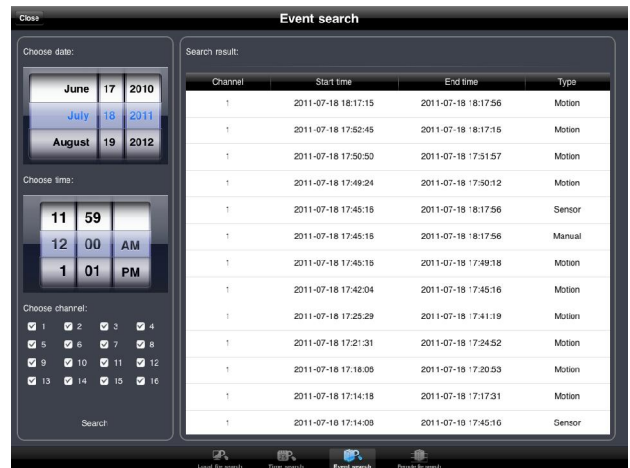


Fig 10



Fig 11

Note: Only DVR 3.0 supports remote playback.

5. Configuration Interface

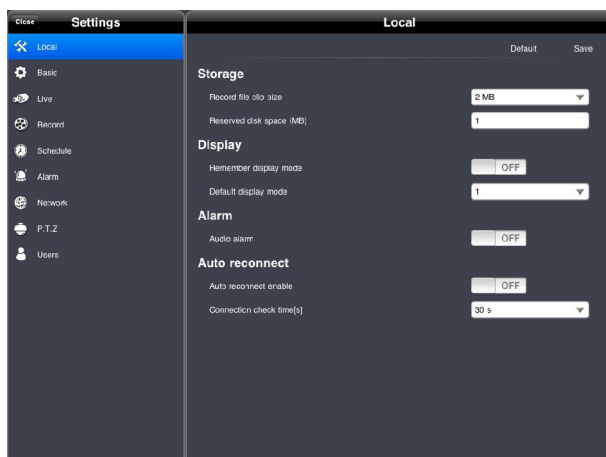


Fig 12

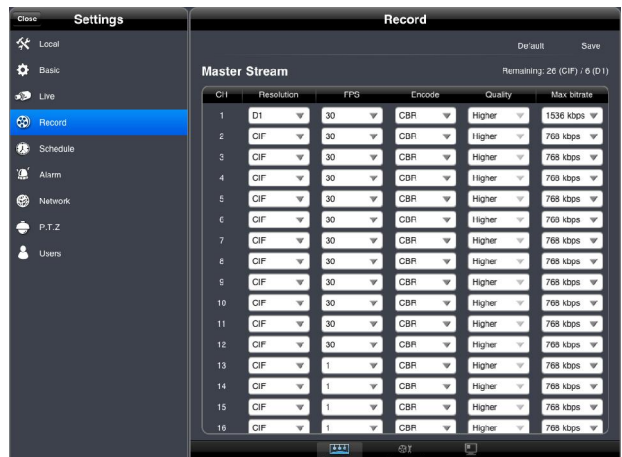


Fig 13

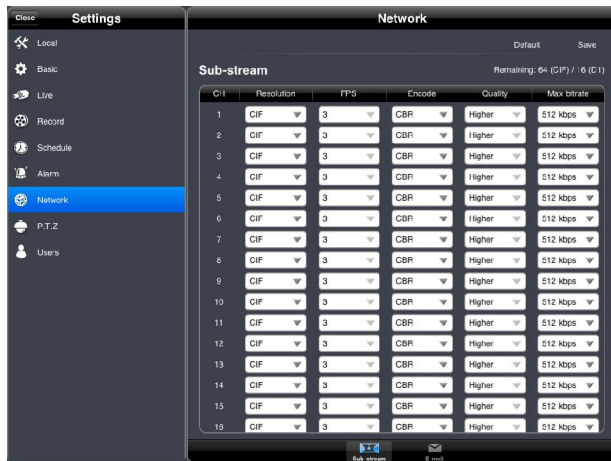


Fig 14

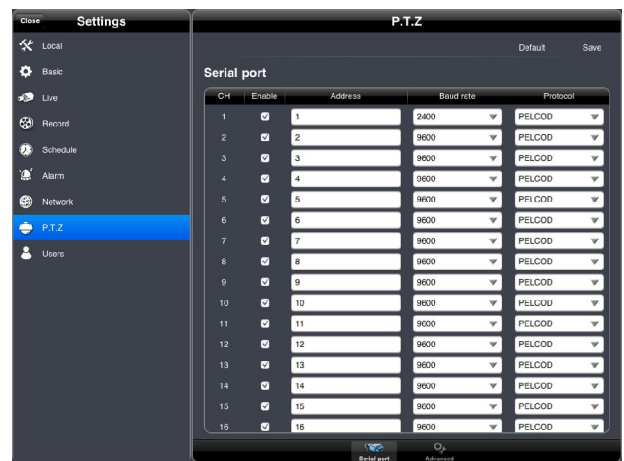


Fig 15

Local Settings Description:

Record file clip size: The size of a minimum video file saved. When the current recording file size is greater than the set value (Max 128MB), it will be stored to another new video file.

Reserved disk space: Reserved SD card disk space, when the disk space is less than this value, the local recording will be stopped.

Default display mode: Division mode.

Remember display order: Remember the display order of channels. It will automatically open the channel viewed last time when logging in again.

Audio alarm: This would trigger an audio alarm in case of a Video Loss/Sensor/Motion alarm.

Other remote settings are the same with the functions in DVR3.0 Web Client.

Note: Only DVR 3.0 supports remote configuration.

6. Information Interface

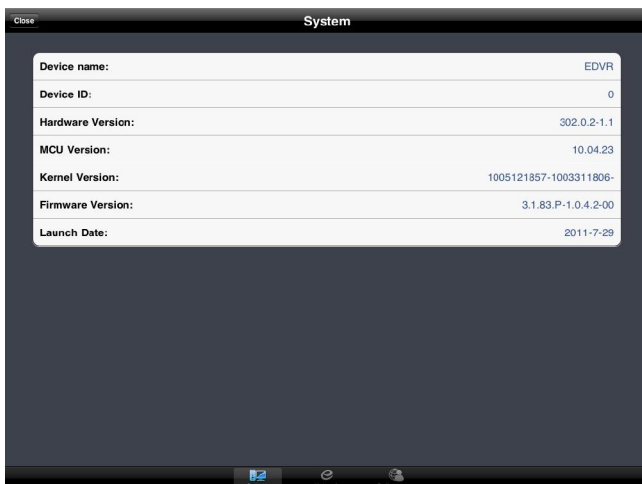


Fig 16

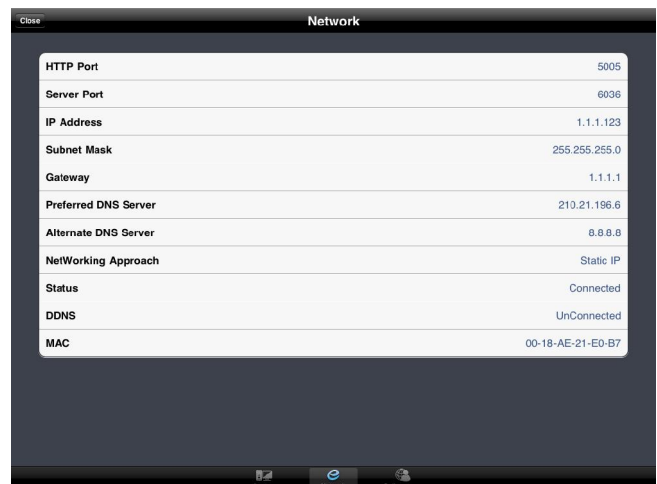





Fig 17

Icon	Function Description
	Check the software and hardware information of the device.
	Check the web information of the device (applicable for DVR 3.0 only).
	Check the information of online user in connection with this device (applicable for DVR 3.0 only).

7. Device Information Interface.

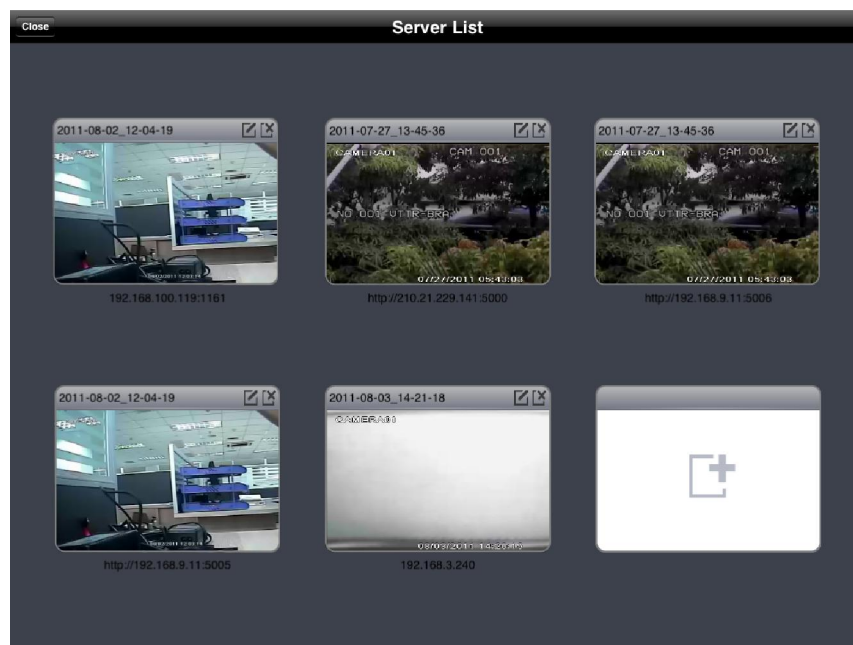


Fig 18