

# Installation Manual

## USB-Modem

Issue 2



**Texecom**  
[www.texe.com](http://www.texe.com)

# 1 Introduction

The *USB-Modem* has been specifically designed for use with Wintex UDL software and a PC to allow trouble free uploading/downloading with *Premier* control panels.

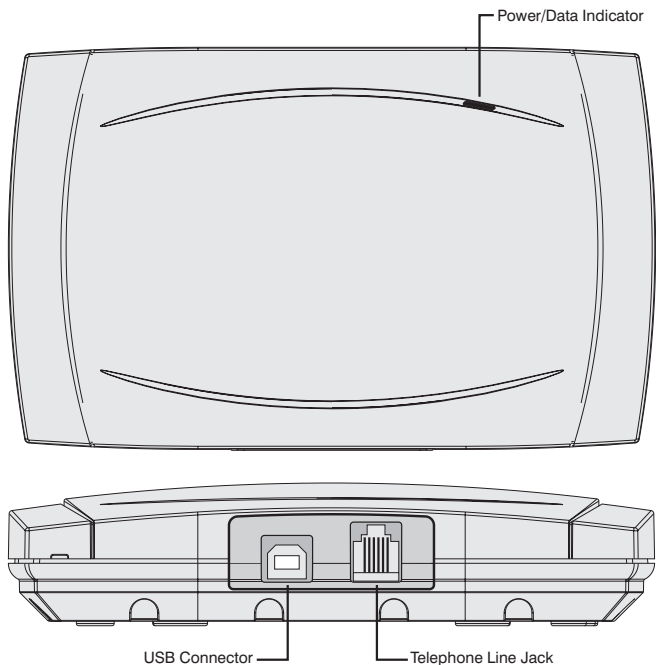
## System Requirements

The following are the minimum requirements required for the *USB-Modem* to work properly with your computer:

- 133 MHz or faster Intel® Pentium® or AMD® processor
- 10 MB free hard disk space
- 16 MB RAM (32 MB or higher recommended)
- Microsoft® Windows® 98 Second Edition (SE), Windows 2000, Windows Millennium Edition (ME), Windows XP or Windows Vista
- DVD/CD-ROM drive for modem software installation

## USB-Modem Layout

The *USB-Modem* has only two connectors, one, the USB Connector, and two, the Telephone Line Jack. No extra power connector is needed as the unit is a USB-powered device that draws power from the computer's USB port.



**Figure 1. *USB-Modem* Indicators and Connectors**

**Telephone Line Jack:** Connect the telephone supplied into this socket and plug the other end into a telephone wall socket.

**USB Connector:** Connect the smaller end of the supplied USB cable into the USB Connector. Connect the other end into one of the computer's USB ports.

**Power/Data Indicator:** This indicator is lit when the *USB-Modem* is powered from the USB port. The indicator flickers when the *USB-Modem* is sending or receiving data.

## 2 Installation

### USB Driver Installation

The *USB-Modem* requires a driver to be installed onto the computer before it can be used. The *USB-Modem* uses the same driver as the *USB-Com*, the driver can be found on the Wintex CD in the **D:\USB-Com** folder or alternatively it can be downloaded from the Texecom web site **www.texecom.com**.

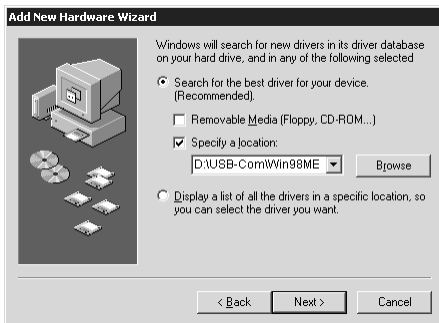
If you are already using a *USB-Com* with the computer then driver will already be installed and you can skip steps 2 - 7.

#### ► Windows 98SE and Windows ME

- 1) Connect the *USB-Modem* into a USB port on the PC. Turn on your computer to allow the Operating System to detect the *USB-Modem*.
- 2) When detected the **Add New Hardware Wizard** screen appears:



- 3) If you are using the drivers from the Wintex CD insert the CD into your DVD/CD-ROM drive. Then click the **Specify the location of the driver (Advanced)** option and click the **Next** button.
- 4) Click the **Specify a location** check box. Then, click the **Browse** button to locate the driver files in **D:\USB-Com\Win98ME** (where D: represents your DVD/CD-ROM drive). Ensure that the **Removable Media (Floppy, CD-ROM...)** check box is not selected:




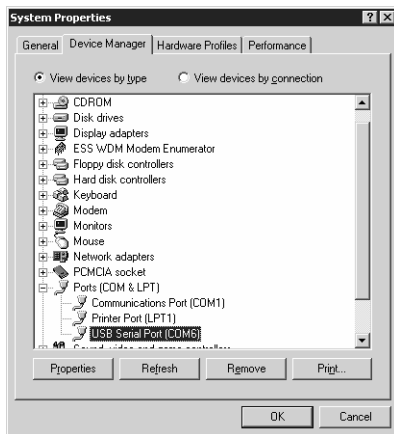
- 5) Click the **Next** button, the following screen appears:



- 6) Click the **Next** button, the following screen appears:



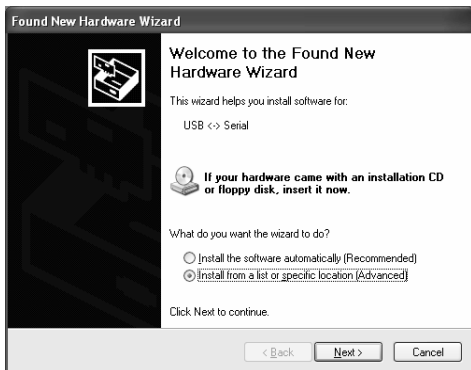
- 7) Click the **Finish** button to complete the *USB-Modem* installation.
- 8) The *USB-Modem* will be assigned a virtual com port, to find out which port number has been assigned to the *USB-Modem*, open the **Device Manager** (press the  +**Break** on your keyboard) and expand the **Ports (COM & LPT)** option. You should see the **USB Serial Port** and its com port number, COM6 in the example below:



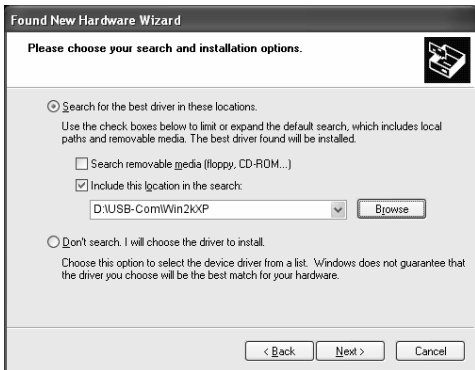
- 9) The *USB-Modem* is now installed and ready for use with Wintex UDL software, see Configuring Wintex Software.

## ► Windows XP and Windows 2000

- 1) Connect the *USB-Modem* into a USB port on the PC. Turn on your computer to allow the Operating System to detect the *USB-Modem*.
- 2) When detected the **Found New Hardware Wizard** screen appears:



- 3) If you are using the driver from the Wintex CD insert the CD into your CD-ROM/DVD drive. Then click the **Install from a list or specific location (Advanced)** option and click the **Next** button.
- 4) Click the **Include this location in the search** check box. Then, click the **Browse** button to locate the driver files in **D:\USB-Com\Win2kXP** (where D: represents your DVD/CD-ROM drive). Ensure that the **Search removable Media (Floppy, CD-ROM...)** check box is not selected:




- 5) Click the **Next** button, the following screen appears:

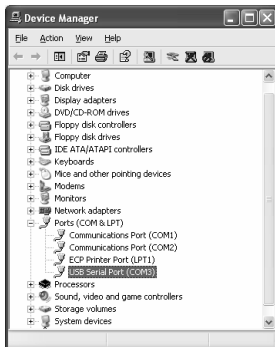


- 6) Click the **Finish** button to complete the USB High Speed Serial Converter installation.
- 7) After a short delay the **Found New Hardware Wizard** screen will appear again:





- 8) Repeat steps 4 to 7 to install the USB Serial Port driver.
- 9) The *USB-Modem* will be assigned a virtual com port, to find out which port number has been assigned to the *USB-Modem*, open the **Device Manager** (press the  + **Break** on your keyboard) and expand the **Ports (COM & LPT)** option. You should see the **USB Serial Port** and its com port number, COM3 in the example below:



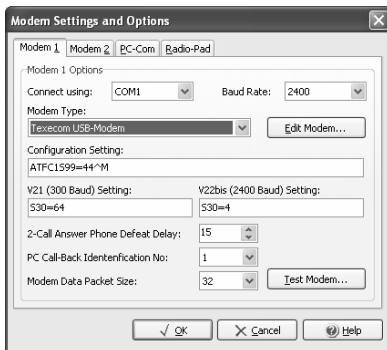
- 10) The *USB-Modem* is now installed and ready for use with Wintex UDL software, see Configuring Wintex Software.

### 3 Configuring Wintex Software

Once the USB driver is installed you need to configure Wintex software to the same port that was assigned by the virtual com port driver:

#### ► Wintex UDL (V5.3)

- 1) Run *Wintex* and open the **Modem Settings & Options** screen by pressing **CTRL+M** on the keyboard:



- 2) In the **Modem 1 or 2 Options** section set the com port to the same number that was assigned by the USB driver, e.g. COM3.
- 3) Click on the **Modem Type** drop down list and select **Texecom USB Modem** from the list.
- 4) Click on the **OK** button. *Wintex* is now ready for use.

The *USB-Modem* can be configured for use with earlier releases of Wintex. In order to do so, you need to create two modem driver entries in Wintex, one for use with the *Com-300* and one for use with the *Com-2400*:

*Com-300* Configuration Setting: **ATFC99=44S30=64^M\***

*Com-2400* Configuration Setting: **ATFC99=44S30=4^M\***

## 4 Specifications

### Electrical

Operating Voltage:	5Vdc
Current Consumption:	30mA
Modem:	V21, V22, V22bis
Dialling Formats:	Pulse or DTMF
REN:	1.0
Telecommunication Standards:	CTR21

### Environmental

Operating Temperature:	-10°C to +55°C
Maximum Humidity:	95% non-condensing

### Physical

Dimensions:	145mm x 90mm x 30mm
Material:	Polycarbonate
Packed Weight:	150g

### Standards



The *USB-Modem* conforms to European Union (EU) Low Voltage Directive (LVD) 73/23/EEC (amended by 93/68/EEC) and Electro-Magnetic Compatibility (EMC) Directive 89/336/EEC (amended by 92/31/EEC and 93/68/EEC).

The CE mark indicates that this product complies with the European requirements for safety, health, environment and customer protection.

### Warranty

All Texecom products are designed for reliable, trouble free operation. Quality is carefully monitored by extensive computerised testing. As a result the *USB-Modem* is covered by a two-year warranty against defects in materials or workmanship.

Due to our policy of continuous improvements Texecom reserve the right to change specification without prior notice.

*Premier* is a trademark of Texecom Ltd.

# **Texecom**

**www.texe.com**

Texecom Limited, Bradwood Court, St. Crispin Way, Haslingden, Lancashire BB4 4PW, England.

## **Technical Support:**

**UK Customers Tel: 08456 300 600**

(Calls charged at 3.36 pence per minute from a BT landline. Calls from other networks may vary.)

**International Customers Tel: +44 1278 411707**

**Email: techsupport@texe.com**

**© Texecom Limited 2007**

**INS326-2**