

**Holographic PIR**  
**INSTALLATION INSTRUCTIONS**

Best  
**Manufacturer**  
1999 & 2000

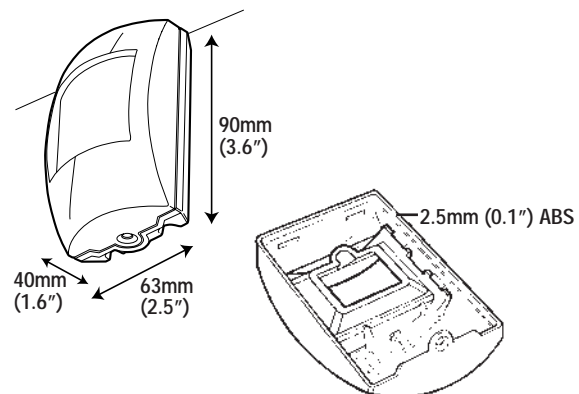
Intruder Alarm  
**Manufacturer**  
2000 & 2001

THANK YOU FOR VOTING TEXECOM

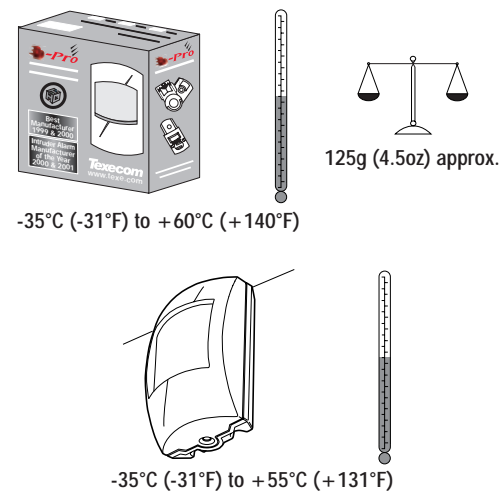
Ask your distributor today for the new Texecom full colour Product Guide.

**Texecom**  
www.texe.com

## 1 PHYSICAL



## 2 ENVIRONMENTAL



## 3 FALSE ALARM PROTECTION

<b>Design:</b>	Noise reduction circuits with maximum ground plane.
<b>RF Immunity:</b>	No false alarms from 80MHz to 1GHz at 50V/m modulated, equivalent to a 700W uniform transmitter at 3m (10ft). Complies with BS EN 61000-4-3 : 1997.
<b>Electrostatic Discharge:</b>	No false alarm up to 8kV. Complies with BS EN 61000-4-2 : 1995.
<b>Fast Transient Immunity:</b>	No false alarm up to ±1kV. Complies with BS EN 61000-4-4 : 1995.
<b>High Energy Transient Immunity:</b>	No false alarm up to ±1kV. Complies with BS EN 61000-4-5 : 1995.
<b>Conducted RF Susceptibility:</b>	No false alarms at 10Vrms. Complies with BS EN 61000-4-6 : 1996.
<b>Conducted Emissions:</b>	Complies with EN 55022 Class B.
<b>Radiated Emissions:</b>	Complies with EN 55022 Class B.
<b>EMC:</b>	Independently certified to EN 50130-4 : 1996.
<b>Pulse Count:</b>	Adjustable Pulse Count. Internal link to select.

## QUALITY ASSURANCE



## WARRANTY

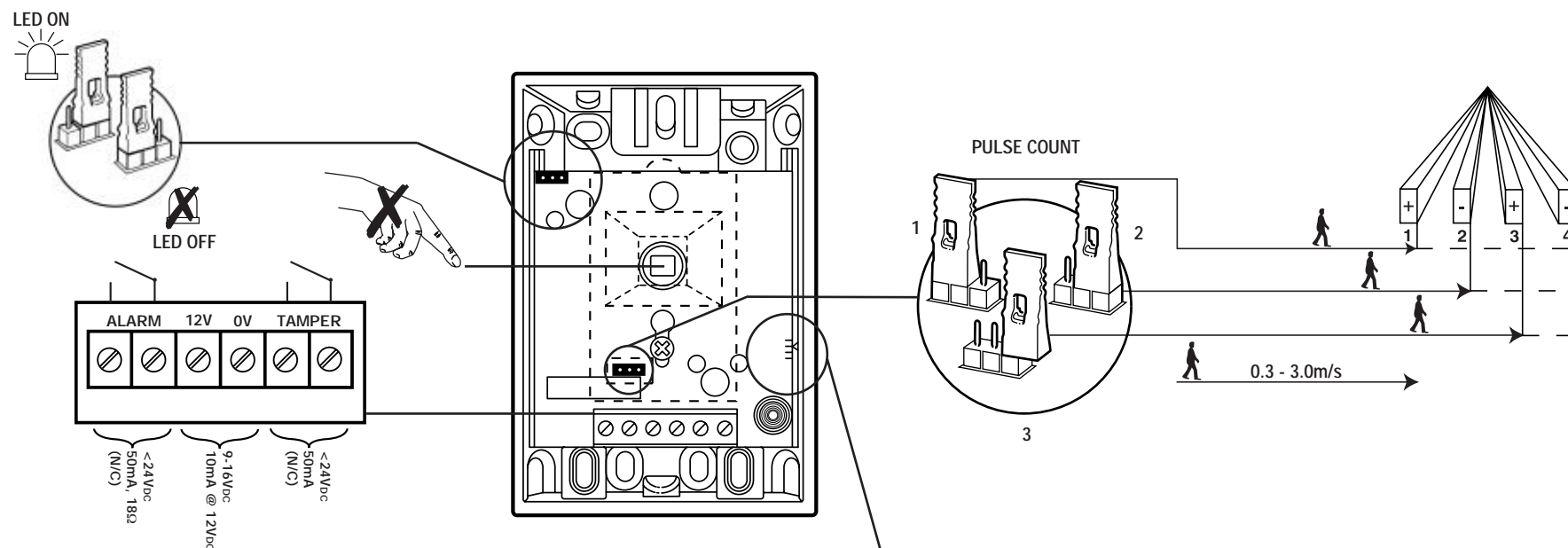
10 year replacement warranty.

The 3D-Pro is designed to detect the movement of an intruder and activate an alarm control panel. As the 3D-Pro is not a complete alarm system, but only a part thereof, Texecom cannot accept responsibility or liability for any damages whatsoever based on a claim that the 3D-Pro failed to function correctly.

Due to our policy of continuous improvement Texecom reserves the right to change specification without prior notice. All specifications are measured at 20°C (68°F).

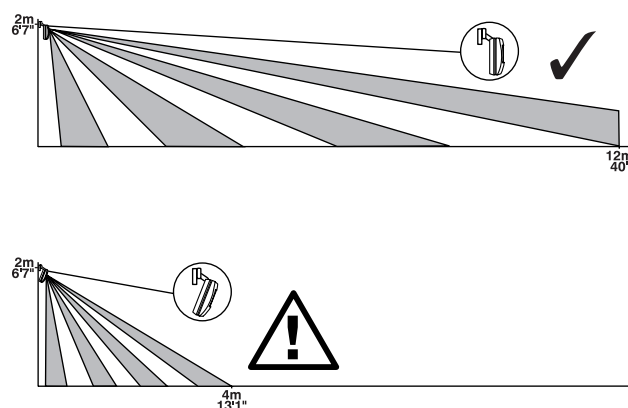
Document Ref: 3DPRO/EU/1.0-4  
© 1994 - 2004 Texecom Ltd

## 4



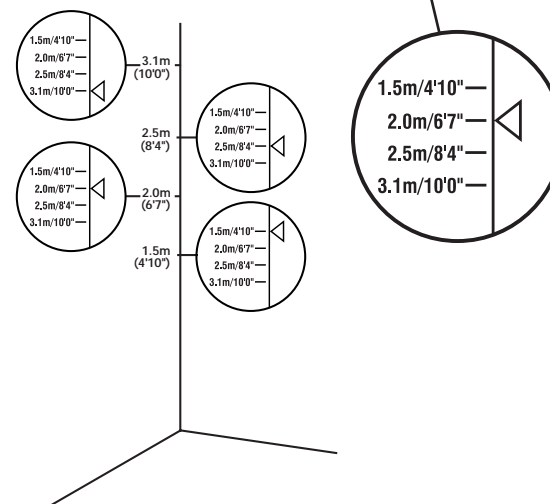
## 6

### ANGLING THE DETECTOR



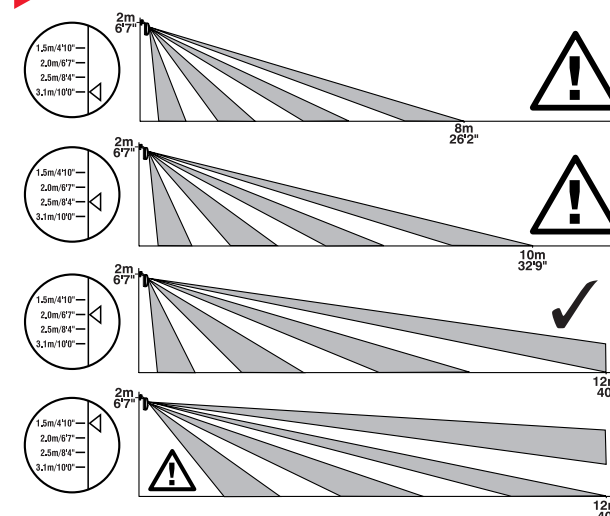
## 7

### MOUNTING HEIGHT AND SETTINGS



## 8

### COVERAGE AT 2m



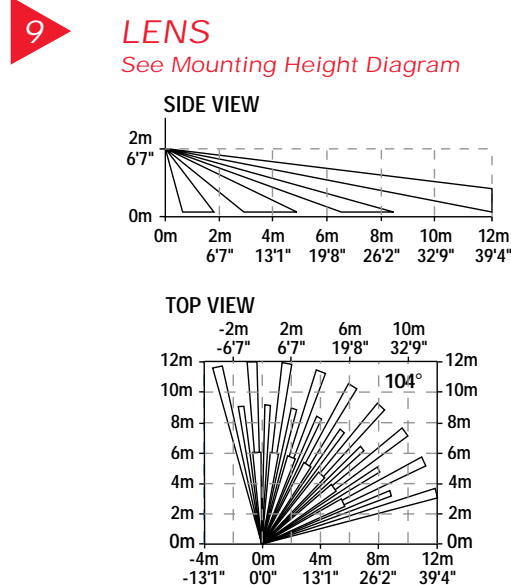
**3D-Pro**  
Holographic PIR  
INSTALLATION INSTRUCTIONS

Best  
Manufacturer  
1999 & 2000

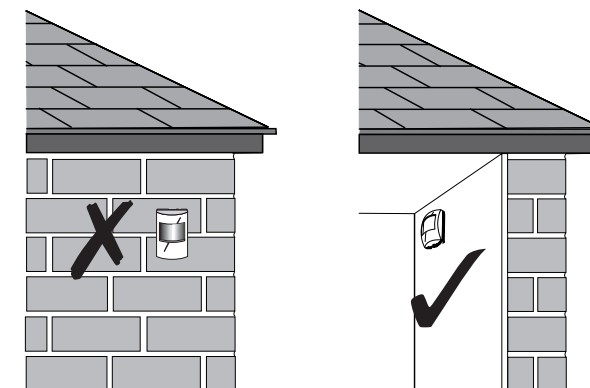
Intruder Alarm  
Manufacturer  
of the Year  
2000 & 2001

THANK YOU FOR VOTING TEXECOM  
Ask your distributor today for the new Texecom full colour Product Guide.

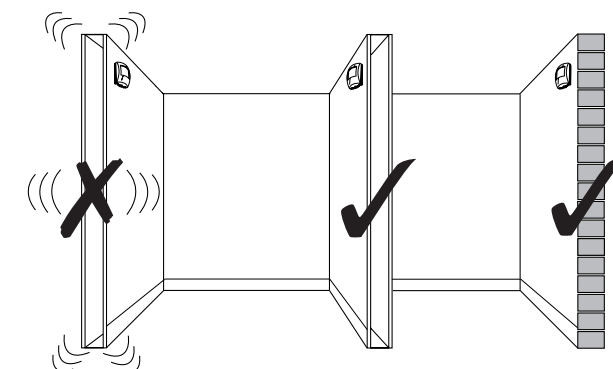
**Texecom**  
www.texe.com



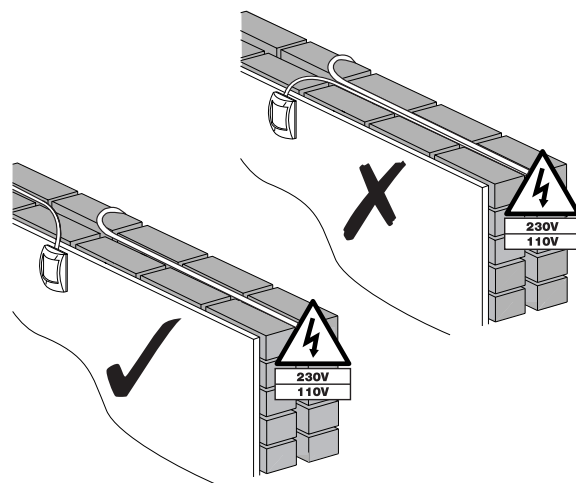
**10 MOUNTING THE 3D-PRO**  
For indoor use only



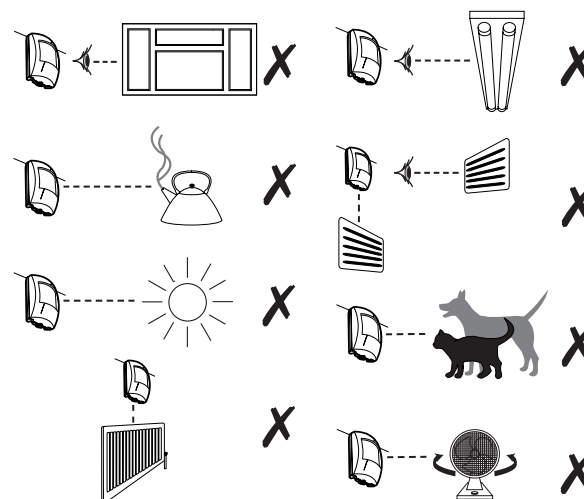
**11 MOUNTING THE 3D-PRO**  
Mount on a stable surface



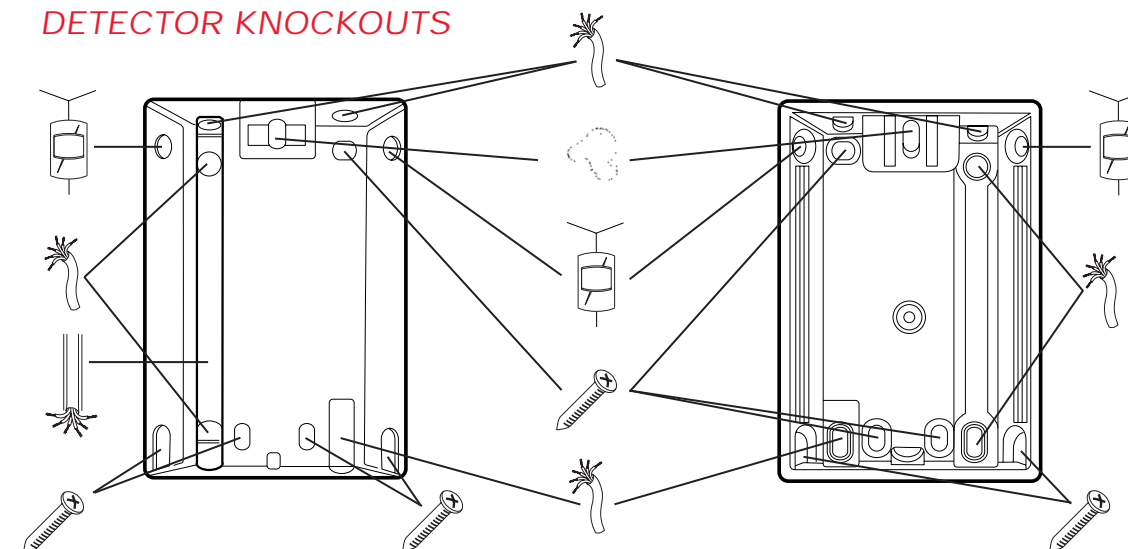
**12 WIRING**  
Do not run cable parallel to mains wiring



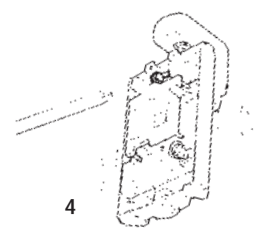
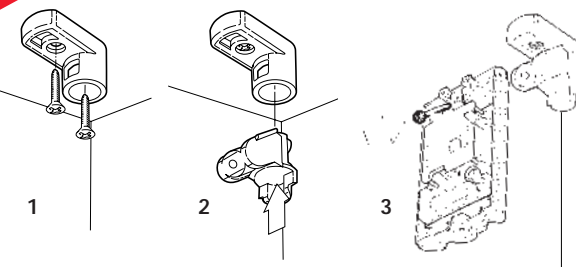
**13 CHOOSING A LOCATION**  
Avoid common false alarm sources



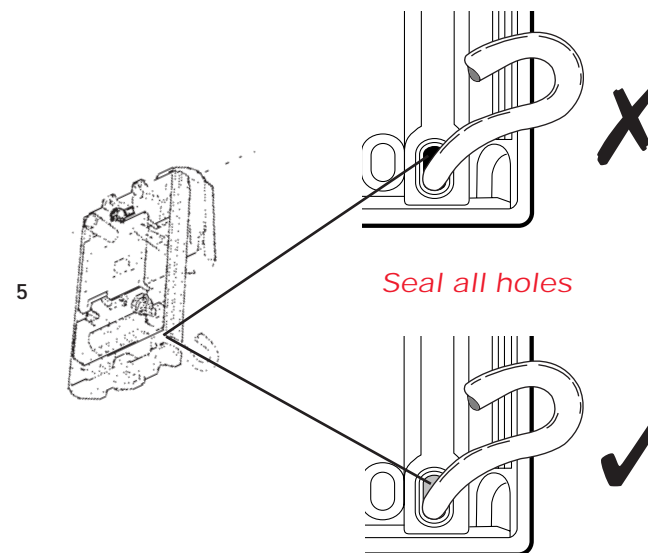
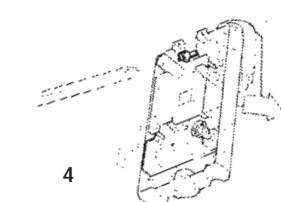
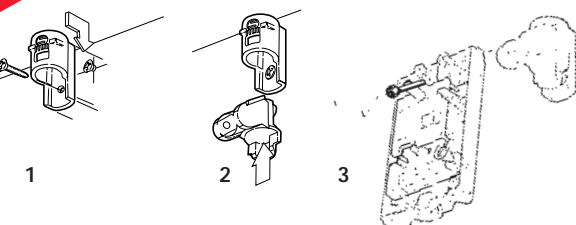
**14 DETECTOR KNOCKOUTS**



**15 CEILING MOUNT BRACKET**



**16 WALL MOUNT BRACKET**



**17 MOUNTING WITHOUT BRACKETS**

