

# 3D-Quad

## Holographic PIR

### INSTALLATION INSTRUCTIONS



Best  
Manufacturer  
1999 & 2000

Intruder Alarm  
Manufacturer  
of the Year  
2000 & 2001

THANK YOU FOR VOTING TEXECOM

Ask your distributor today for the new Texecom full colour Product Guide.

**Texecom**  
www.texe.com

## QUALITY ASSURANCE



Certificate Number: FM 35285



## WARRANTY

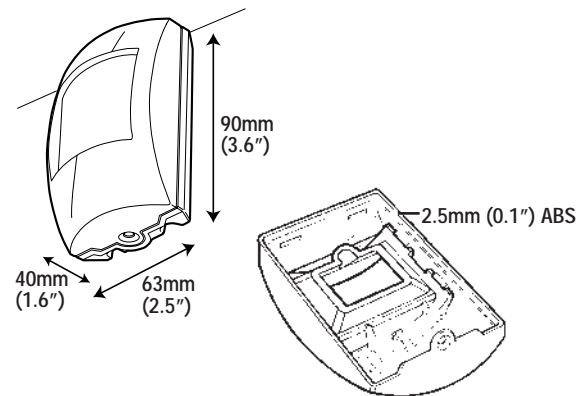
10 year replacement warranty.

The 3D-Quad is designed to detect the movement of an intruder and activate an alarm control panel. As the 3D-Quad is not a complete alarm system, but only a part thereof, Texecom cannot accept responsibility or liability for any damages whatsoever based on a claim that the 3D-Quad failed to function correctly.

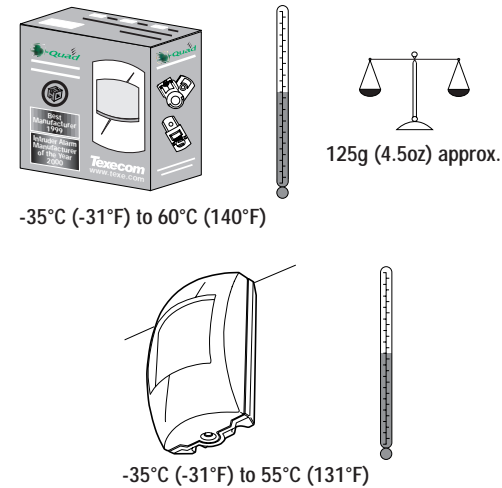
Due to our policy of continuous improvement Texecom reserves the right to change specification without prior notice. All specifications are measured at 20°C (68°F).

Document Ref: 3DQUAD/EU/1.0-2  
© 1994 - 2004 Texecom Ltd

## 1 PHYSICAL

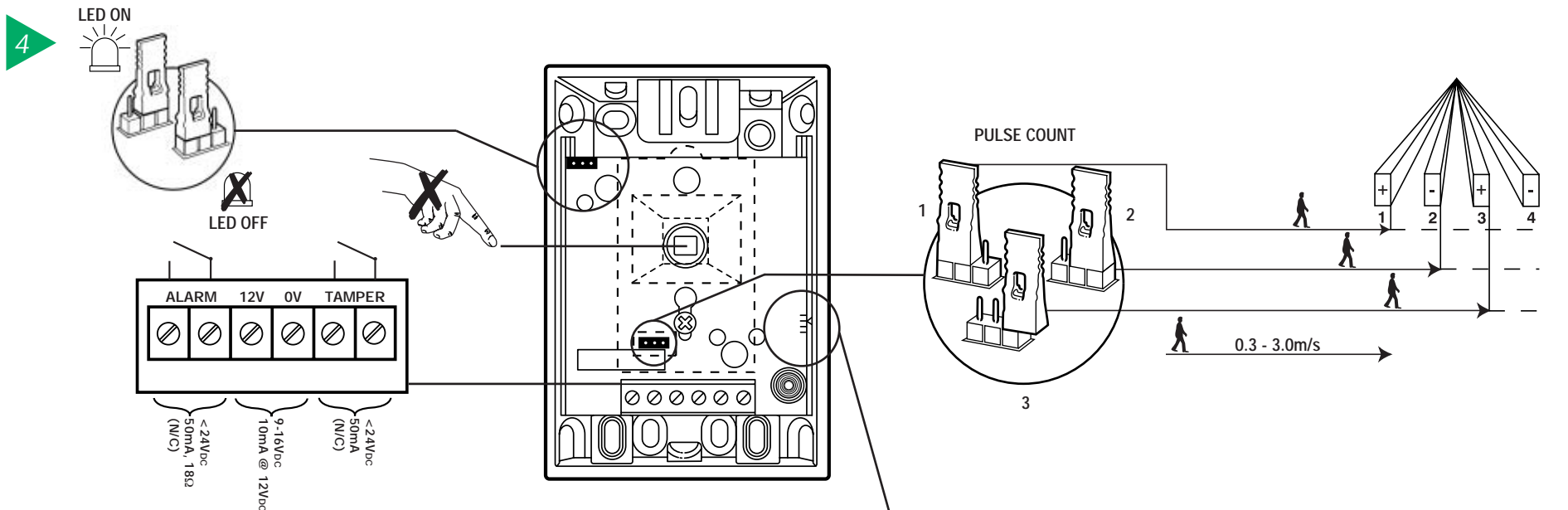


## 2 ENVIRONMENTAL

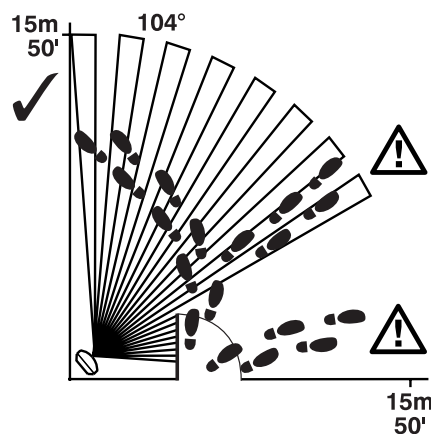


## 3 FALSE ALARM PROTECTION

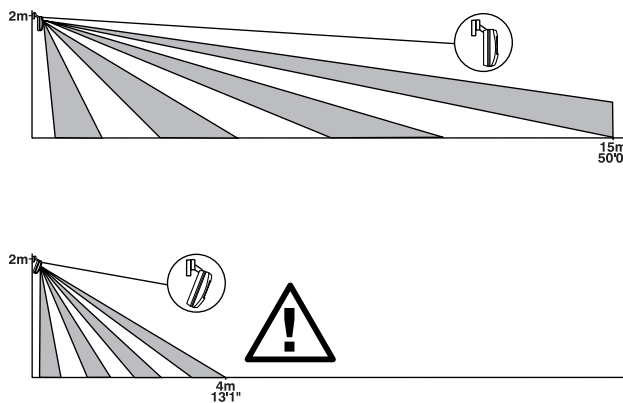
<b>Design:</b>	Noise reduction circuits with maximum ground plane.
<b>RF Immunity:</b>	No false alarms from 80MHz to 1GHz at 50V/m modulated, equivalent to a 700W uniform transmitter at 3m (10ft). Complies with BS EN 61000-4-3 : 1997.
<b>Electrostatic Discharge:</b>	No false alarm up to 8kV. Complies with BS EN 61000-4-2 : 1995.
<b>Fast Transient Immunity:</b>	No false alarm up to ±1kV. Complies with BS EN 61000-4-4 : 1995.
<b>High Energy Transient Immunity:</b>	No false alarm up to ±1kV. Complies with BS EN 61000-4-5 : 1995.
<b>Conducted RF Susceptibility:</b>	No false alarms at 10Vrms. Complies with BS EN 61000-4-6 : 1996.
<b>Conducted Emissions:</b>	Complies with EN 55022 Class B.
<b>Radiated Emissions:</b>	Complies with EN 55022 Class B.
<b>EMC:</b>	Independently certified to EN 50130-4 : 1996.
<b>Pulse Count:</b>	Adjustable Pulse Count. Internal link to select.



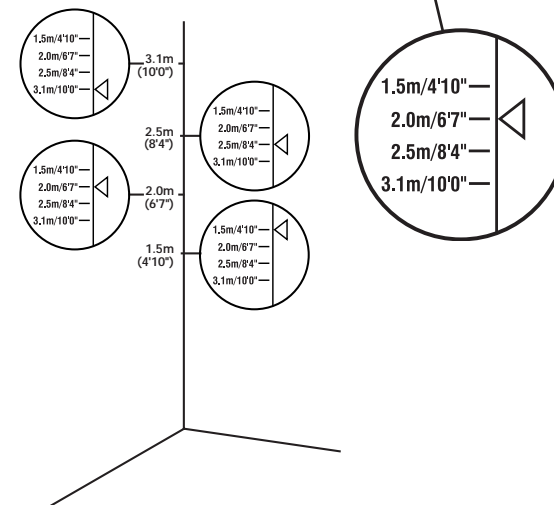
## 5 COVERAGE AND PICK-UP



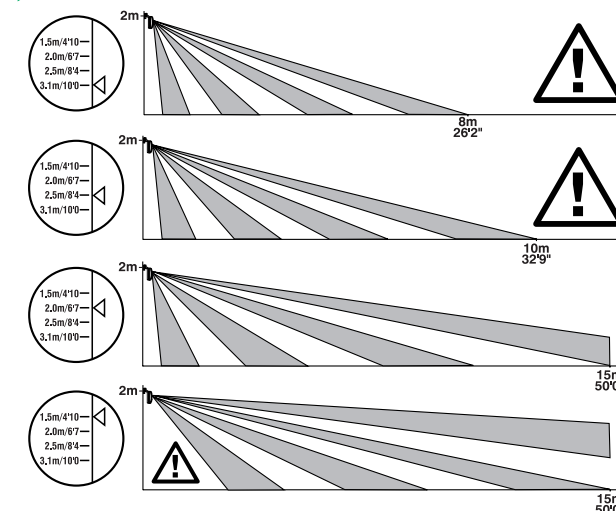
## 6 ANGLING THE DETECTOR



## 7 MOUNTING HEIGHT AND SETTINGS



## 8 COVERAGE AT 2m





Holographic PIR

## INSTALLATION INSTRUCTIONS



Best  
Manufacturer  
1999

Intruder Alarm  
Manufacturer  
of the Year  
2000

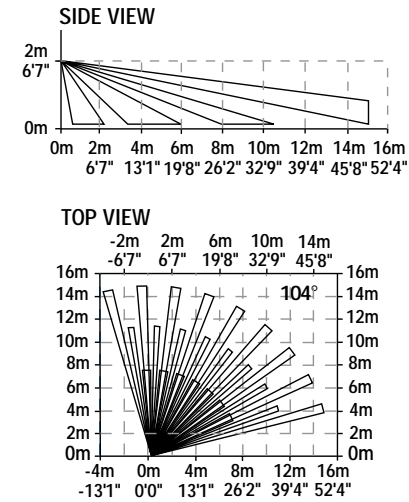
**Texecom**  
www.texe.com

INS 151-2

9

### LENS

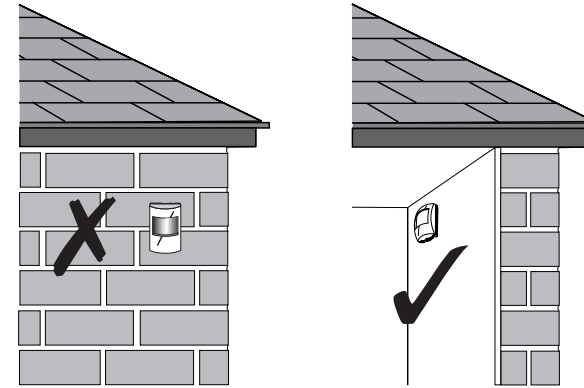
See Mounting Height Diagram



10

### MOUNTING THE 3D-QUAD

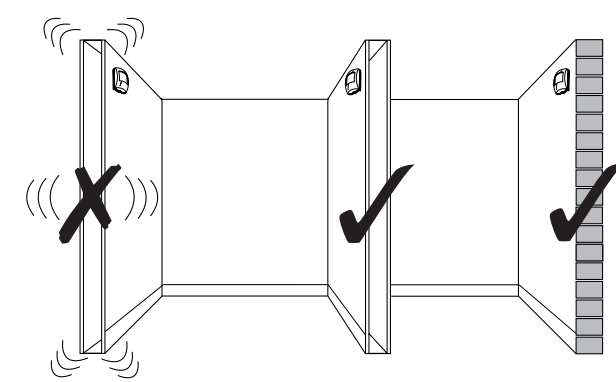
For indoor use only



11

### MOUNTING THE 3D-QUAD

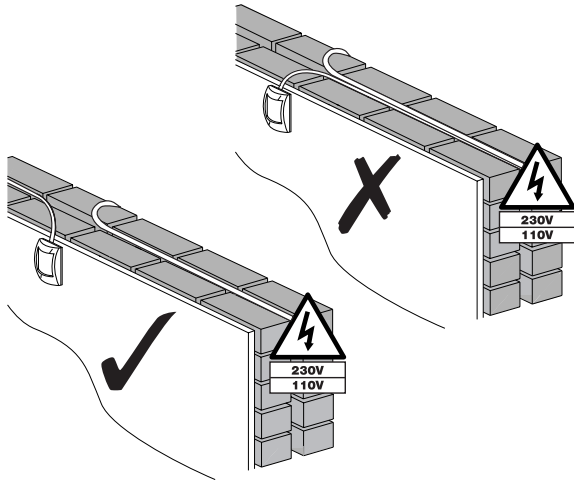
Mount on a stable surface



12

### WIRING

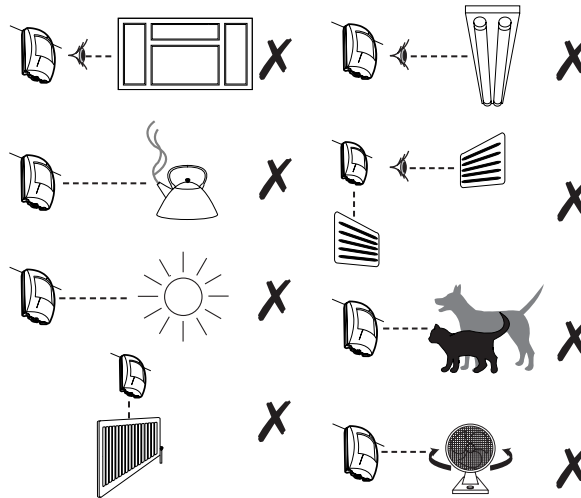
Do not run cable parallel to mains wiring



13

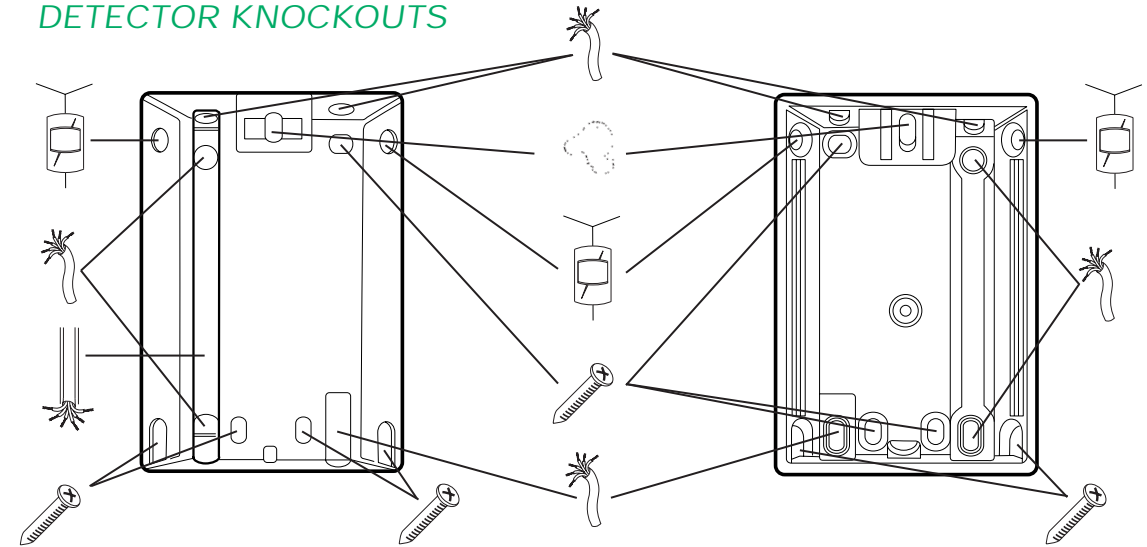
### CHOOSING A LOCATION

Avoid common false alarm sources



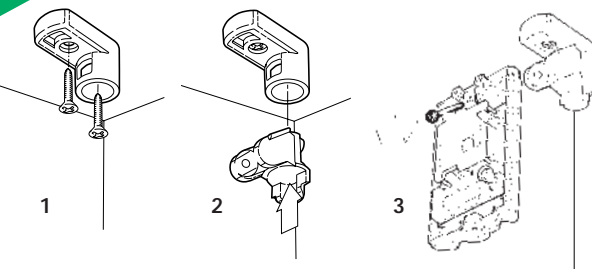
14

### DETECTOR KNOCKOUTS



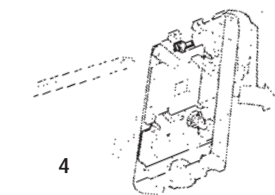
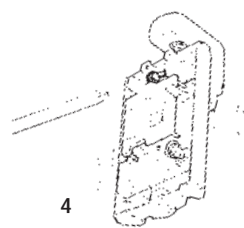
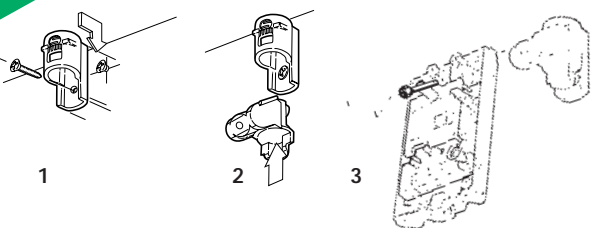
15

### CEILING MOUNT BRACKET

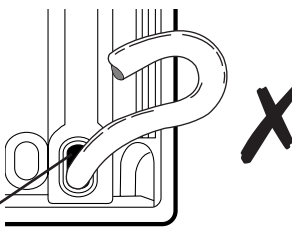


16

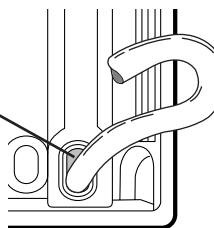
### WALL MOUNT BRACKET



5



Seal all holes



6

6

17

### MOUNTING WITHOUT BRACKETS

