

# **Speed Dome Web3.0 Operation Manual**

**Version 4.2.0**

# Table of Contents

1	Network Connection .....	1
1.1	Preparation.....	1
1.2	Log in .....	1
1.3	Live Interface .....	3
1.4	Encode Setup .....	3
1.5	Video Window Setup .....	4
1.6	System Menu.....	5
1.7	Video Window Function Option .....	5
1.8	PTZ Control.....	6
1.9	PTZ Setup/Menu .....	7
2	Setup.....	10
2.1	Camera .....	10
2.1.1	Video .....	10
2.1.2	Audio .....	15
2.2	IVS Setup .....	16
2.2.1	Global Setup .....	16
2.2.2	Scene Setup .....	17
2.2.3	Rule Setup .....	18
2.2.4	Parameter.....	22
2.3	Network.....	24
2.3.1	TCP/IP .....	24
2.3.2	Connection .....	26
2.3.3	PPPoE .....	27

2.3.4	DDNS .....	28
2.3.5	IP filter .....	29
2.3.6	SMTP (e-mail) .....	29
2.3.7	UPnP .....	31
2.3.8	SNMP .....	32
2.3.9	Bonjour .....	33
2.3.10	Multicast .....	34
2.3.11	IEEE802 .....	34
2.3.12	Qos .....	35
2.4	Event .....	36
2.4.1	Video detect .....	36
2.4.2	Alarm .....	40
2.4.3	Abnormality .....	42
2.5	Storage .....	44
2.5.1	Record schedule and snapshot schedule .....	44
2.5.2	Destination .....	45
2.5.3	Record control .....	46
2.6	System .....	47
2.6.1	General .....	47
2.6.2	Account .....	49
2.6.3	PTZ .....	52
2.6.4	Default .....	54
2.6.5	Import/Export .....	54
2.6.6	Auto maintenance .....	55
2.6.7	Firmware update .....	55
2.7	Information .....	55
2.7.1	Version .....	56
2.7.2	Log .....	56
2.7.3	Online User .....	57
3	Alarm .....	58
4	Log out .....	59

## Important

- **The following functions are for reference only. Some series products may not support all the functions listed below.**
- **Usually we recommend IE 7 or higher version. For those versions below IE 7, it may not support the operation of some functions.**

# 1 Network Connection

## 1.1 Preparation

This series speed dome product supports the Web access and management via PC.

Web includes several modules: monitor channel preview, PTZ control, system configuration, alarm and etc.

Please follow the steps listed below for network connection.

- Make sure the speed dome has connected to the network properly.
- Speed dome IP address and PC IP address shall be in the same network segment. If there is router, please set the corresponding gateway and subnet mask.
- Use order ping `***.***.***.***`(\* speed dome address) to check connection is OK or not.

## 1.2 Log in

Open IE and input speed dome address in the address bar.

For example, if your device IP is 192.168.1.108, then please input `http:// 192.168.1.108` in IE address bar. See Figure 1-1.

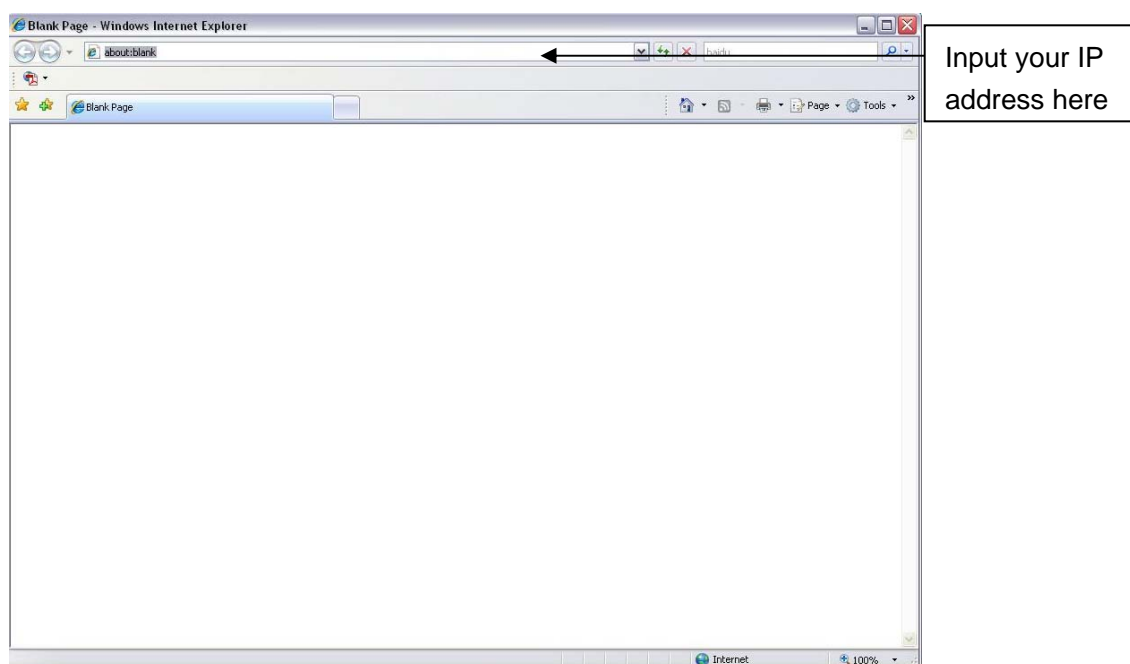


Figure 1-1

The login interface is shown as below. See Figure 1-2.

Please input your user name and password.

Default factory name is **admin** and password is **admin**.

**Note: For security reasons, please modify your password after you first login.**

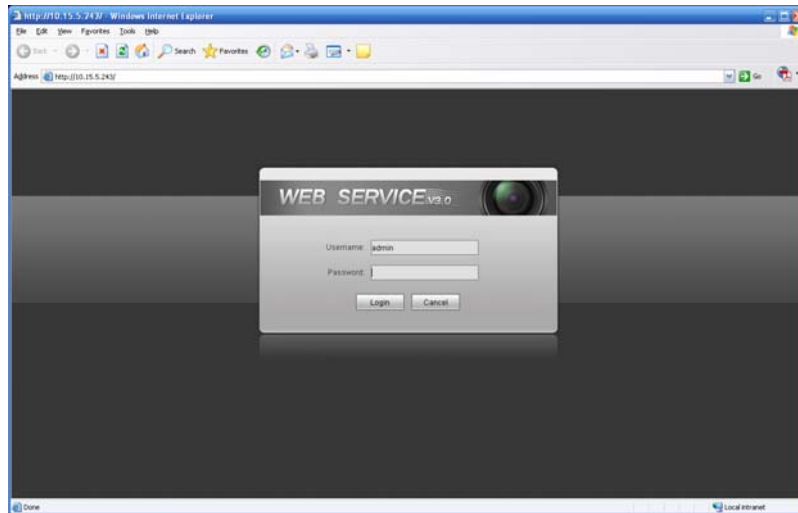


Figure 1-2

If it is your first time to login in, system pops up warning information to ask you whether install control webrec.cab or not. Please click OK button, system can automatically install the control. When system is upgrading, it can overwrite the previous Web too.

If you can't download the ActiveX file, please check whether you have installed the plug-in to disable the control download. Or you can lower the IE security level. See Figure 1-3.

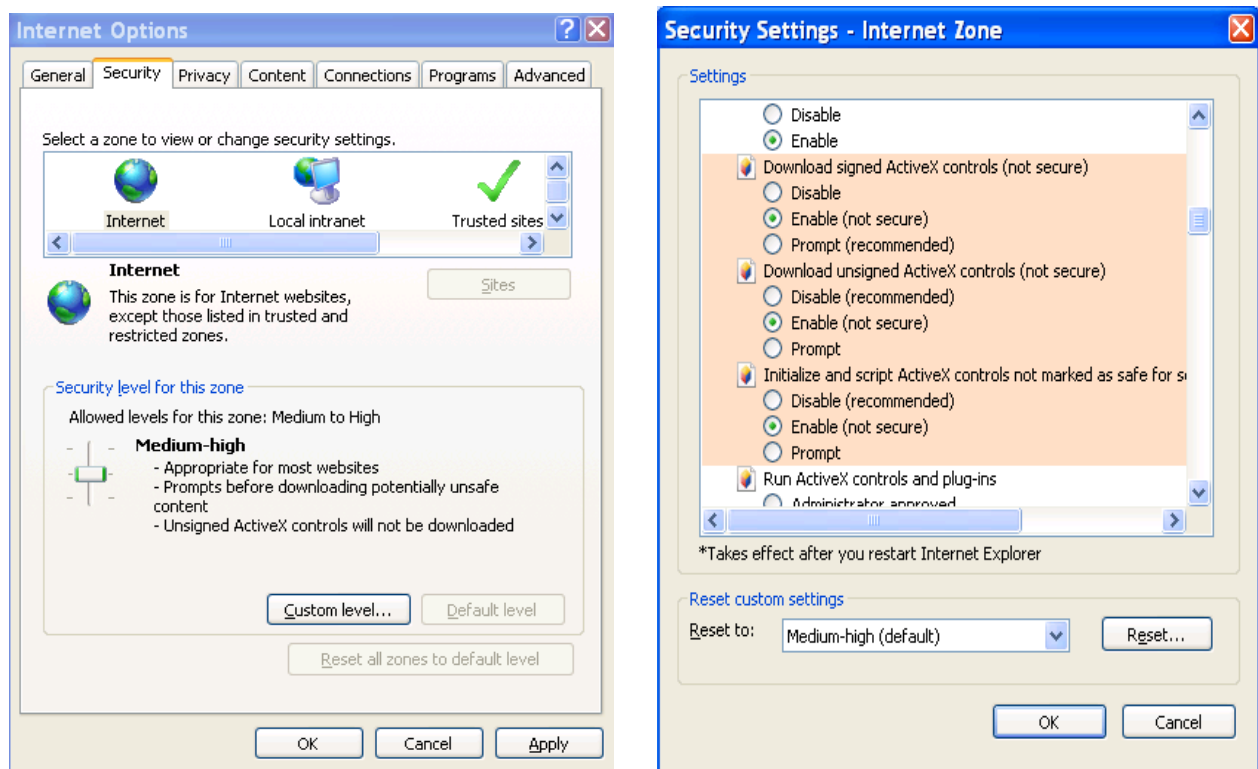


Figure 1-3

## 1.3 Live Interface

After you logged in, you can see the live monitor window. Now you can operate the speed dome via the WEB. See Figure 1-4.

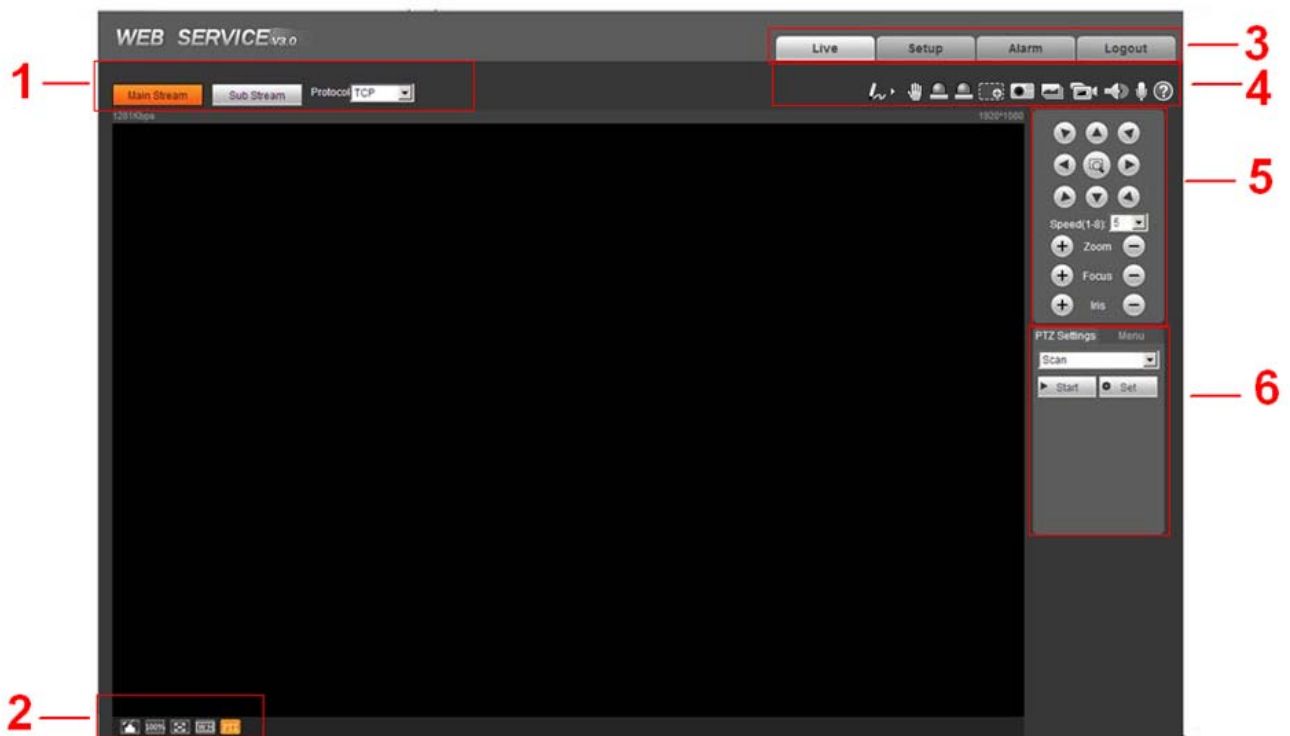


Figure 1-4

There are six sections:

- Section 1: Encode setup bar
- Section 2: Window adjust bar
- Section 3: System menu bar
- Section 4: Window function option bar
- Section 5: PTZ control
- Section 6: PTZ function

## 1.4 Encode Setup

The encode setup interface is shown as in Figure 1-5.



Figure 1-5

Please refer to the following sheet for detailed information.

Parameter	Function
Main stream	In normal network width environment, main stream can record audio/video file and realize network monitor.
Sub (Extra) stream	If network width is not sufficient, you can use sub stream to realize network monitor. It is to reduce network bandwidth usage.
Protocol	You can select video monitor protocol from the dropdown list. There are three options: TCP/UDP/Multicast.

## 1.5 Video Window Setup

The interface is shown as in Figure 1-6.

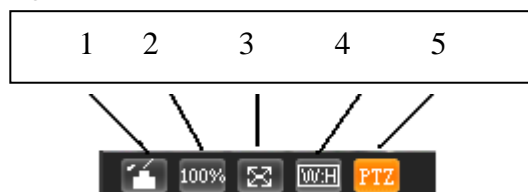


Figure 1-6

Please refer to the following sheet for detailed information.

SN	Parameter	Function
1	Image control	Click it to open picture setup interface. See Figure 1-7. This interface is on the top right pane.
2	Original size	Click this button to go to original size. It is to display the actual size of the video. It depends on the resolution of the video.
3	Full screen	Click it to go to full-screen mode. Double click the mouse or click the Esc button to exit the full screen.
4	Width and height ratio	Click it to restore original ratio or suitable window.
5	Open/close PTZ interface	Left click it to display or hide the PTZ control interface.

The picture setup interface is shown as in Figure 1-7.



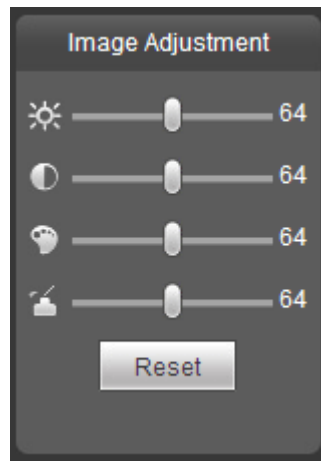






Figure 1-7

Please refer to the following sheet for detailed information.

Parameter		Function	
Video setup		Brightness setup icon. It is to adjust monitor video brightness.	<b>Note:</b> <ul style="list-style-type: none"> <li>● All the operations here apply to WEB end only.</li> <li>● Please go to Setup-&gt;Camera-&gt;Conditions to adjust brightness, contrast, hue and saturation setup.</li> </ul>
		Contrast setup icon. It is to adjust monitor video contrast ness.	
		Saturation setup icon. It is to adjust monitor video saturation.	
		Hue setup icon. It is to adjust monitor video hue.	
	Reset	Restore brightness, contrastness saturation and hue to system default setup.	

## 1.6 System Menu

System menu is shown as in Figure 1-8.

Please refer to chapter 1.3 Live, chapter 2 Setup, chapter 3 Alarm, chapter 5 Log out for detailed information.



Figure 1-8

## 1.7 Video Window Function Option

The interface is shown as below. See Figure 1-9.



Figure 1-9

Please refer to the following sheet for detailed information.

SN	Parameter	Function
1	Remark	Click it and then select pen color, you can write down the mark information on the preview interface.
2	Gesture control	On the preview interface you can left click mouse to control the PTZ and use the middle button to zoom in/zoom out.
3	Alarm output	Click it to generate an alarm output and the button becomes red. Click it again to stop alarm output. There are two alarm output icons since this series product supports two relay output. <b>Please note the alarm output interface may vary due to different series products.</b>
4	Digital zoom	When video is in original status, click this button you can select any zone to zoom in. After zoom in ,you can drag the zoom in area in the specified area. Right click mouse system restores original status. You can use the wheel to zoom out the video.
5	Snapshot	You can snapshot important video. You can go to Setup->Camera->Video->Path to modify the local record save path.
6	Triple snap	Click it, system can snap at 1f/s for three times. All images are memorized in system storage folder.
7	Record	When you click local record button, the system begins recording. You can go to Setup->Camera->Video->Path to modify the local record save path.
8	Audio output	Turn on or off audio when you are monitoring. You can go to Setup->Camera->Audio to set.
9	Bidirectional talk	Click it to begin audio talk. You can go to Setup->Camera->Audio to set bidirectional talk mode.
10	Help	Click it to open help file.

## 1.8 PTZ Control

Before PTZ operation, please make sure you have properly set PTZ protocol. (Please go to Setup->System->PTZ to set.).

Here you can view direction keys, speed, zoom, focus, iris button. See Figure 1-10.

- PTZ direction: PTZ supports eight directions: left/right/up/down/upper left/upper right/bottom left/bottom right/ fast positioning.
- Speed: The step 8 speed is faster than step 1.

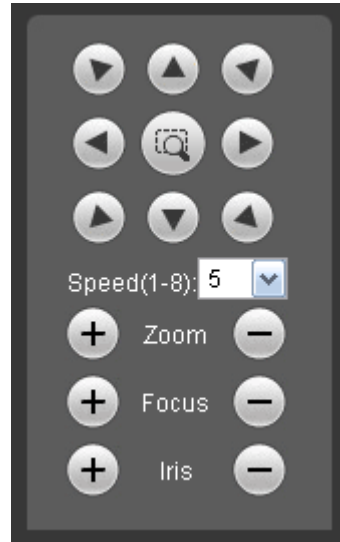


Figure 1-10

## 1.9 PTZ Setup/Menu

The PTZ setup/Menu interface is shown as in Figure 1-11.

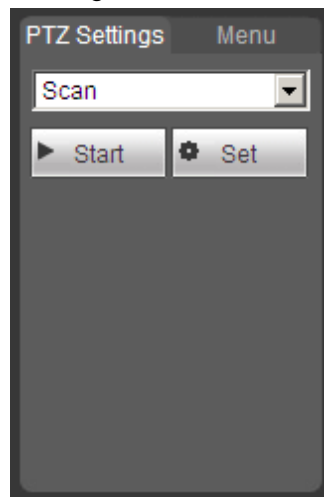


Figure 1-11

Click PTZ set button, the interface is shown as in Figure 1-12. Here you can select scan, preset, tour pattern, assistant function and etc.

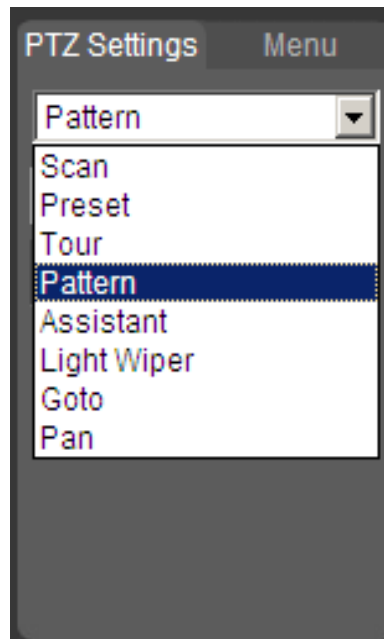


Figure 1-12

Please refer to the following sheet for PTZ setup information.

Parameter	Function
Scan	<ul style="list-style-type: none"> <li>Select Scan from the dropdown list, click Set button and then control the PTZ to set the scan left limit and right limit. Start button, you can begin scan operation. Default SN is 1.</li> </ul>
Preset	<ul style="list-style-type: none"> <li>Select Preset from the dropdown list, input the preset value and then click Add button, now system save current position as one preset. Click View button, the camera turns to the corresponding position of the preset.</li> </ul>
Tour	<ul style="list-style-type: none"> <li>Select Tour from the dropdown list and then input tour value. Click Add or Delete button to add/remove one preset from the tour. Click Start button, you can begin tour.</li> </ul>
Pattern	<ul style="list-style-type: none"> <li>You can select Pattern from the dropdown list and then click Add button, now you can operate PTZ to realize zoom, focus, iris, direction operation and etc. Click Stop button to stop memory pattern process. Click Start button to begin PTZ movement.</li> </ul>
Assistant	<ul style="list-style-type: none"> <li>Input assistant value and click AUX on button to enable corresponding assistant value. Click AUX off button to disable assistant function.</li> </ul>

Parameter	Function
Goto	<ul style="list-style-type: none"> <li>● It is the accurate positioning function. Please input corresponding horizontal angle, tilt angle, and speed dome zoom speed and then click Goto button to go to a specified position.</li> <li>● One unit of the horizontal angle or tile angle stands for 0.1 degree.</li> </ul>
Pan	Select Pan from the dropdown list and then click Start button, you can turn the PTZ realize 360 degrees movement. Click Stop button to stop current operation.

## 2 Setup

### 2.1 Camera

#### 2.1.1 Video

##### 2.1.1.1 Video bit stream

The video bit stream interface is shown as below. See Figure 2-1.

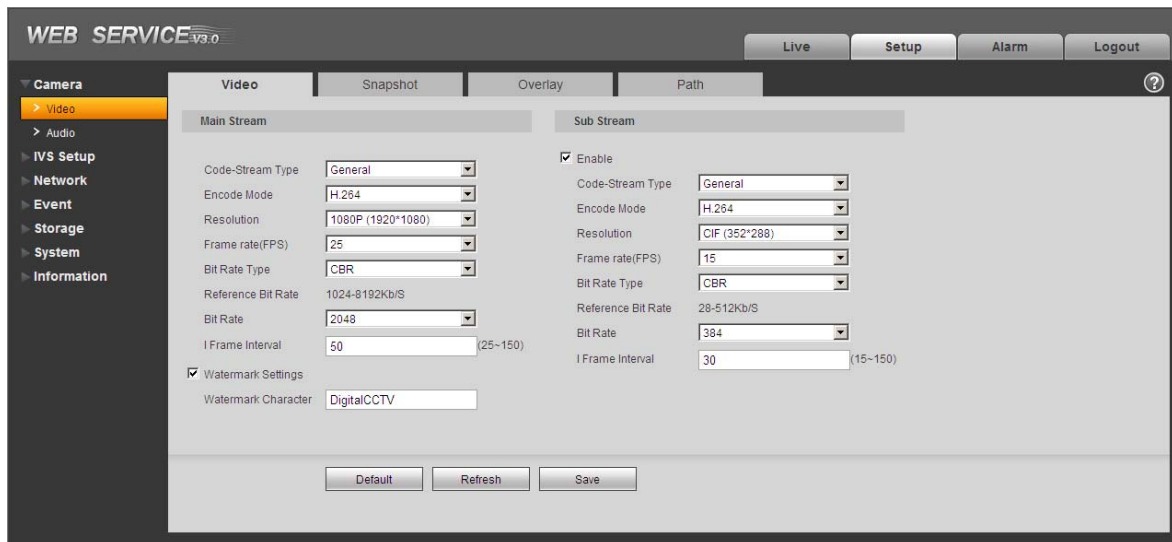


Figure 2-1

Please refer to the following sheet for detailed information.

Parameter		Function
Main stream	Bit stream type	It includes general stream, motion stream and alarm stream. You can select different encode frame rates for different recorded events. The frame rates of the motion detect and alarm is customized.
	Encode mode	There are four options: H.264, H.264B, H.264H, and MJPEG encode mode. <ul style="list-style-type: none"><li>● H.264 : Main Profile encode mode.</li><li>● H.264B :Baseline Profile encode mode.</li><li>● H.264H: High Profile encode mode.</li><li>● MJPEG: In this encode mode, the video needs general large bit stream to guarantee the video definition. You can use the max bit stream value in the recommend bit to get the better video output effect.</li></ul>

Parameter		Function
	Resolution	There are multiple resolutions. You can select from the dropdown list. For each resolution, the recommended bit stream value is different.
	Frame Rate (FPS)	PAL: 1~25f/s, NTSC: 1~30f/s. The frame rate may vary due to different resolutions.
	Bit Rate Type	There are two options: VBR and CBR. Please note, you can set video quality in VBR mode. In MJPEG mode, the bit stream control mode can only be CBR.
	Recommended Bit	Recommended bit rate value according to the resolution and frame rate you have set.
	Bit Rate	<ul style="list-style-type: none"> <li>• In CBR, the bit rate here is a fixed value.</li> <li>• It is the max value in VBR mode.</li> </ul>
	I Frame	Here you can set the P frame amount between two I frames. The value ranges from 1 to 150. Default value is 50. Recommended value is frame rate *2. <b>Important</b> <b>I frame interval setup is null if it is the MJPEG encode mode.</b>
Sub stream	Watermark	This function allows you to verify the video is tampered or not. The max length is 128-digit. The character can only include number, character, underline and hyphen.
	Enable	Please check the box here to enable extra stream function. This function is enabled by default.
	Bit stream type	General bit stream.

Parameter		Function
	Encode mode	<p>There are four options: H.264, H.264B, H.264H, and MJPEG encode mode.</p> <ul style="list-style-type: none"> <li>● H.264 : Main Profile encode mode.</li> <li>● H.264B :Baseline Profile encode mode. H.264B is mainly for Blackberry cell phone to realize the monitor. You need to enable the sub stream function in your camera and set the resolution as CIF. Then you can monitor via the Blackberry cell phone.</li> <li>● H.264H: High Profile encode mode.</li> <li>● MJPEG: In this encode mode, the video needs general large bit stream to guarantee the video definition. You can use the max bit stream value in the recommend bit to get the better video output effect.</li> </ul>
	Resolution	<p>There are multiple resolutions. You can select from the dropdown list.</p> <p>For each resolution, the recommended bit stream value is different.</p>
	Frame Rate (FPS)	<p>PAL: 1~25f/s, NTSC: 1~30f/s.</p> <p>The frame rate may vary due to different resolutions.</p>
	Bit Rate Type	<p>There are two options: VBR and CBR.</p> <p>Please note, you can set video quality in VBR mode.</p>
	Recommended Bit	<p>Recommended bit rate value according to the resolution and frame rate you have set.</p>
	Bit Rate	<ul style="list-style-type: none"> <li>• In CBR, the bit rate here is a max value. In dynamic video, system needs to lower frame rate or video quality to guarantee the value.</li> <li>• It is null in VBR mode.</li> <li>• Please refer to recommended bit rate for the detailed information.</li> </ul>
	I Frame	<p>Here you can set the P frame amount between two I frames. The value ranges from 1 to 150. Default value is 50.</p> <p>Recommended value is frame rate *2.</p> <p><b>Important</b></p> <p><b>I frame interval setup is null if it is the MJPEG encode mode.</b></p>

#### 2.1.1.2 Snapshot



The snapshot interface is shown as in Figure 2-2.

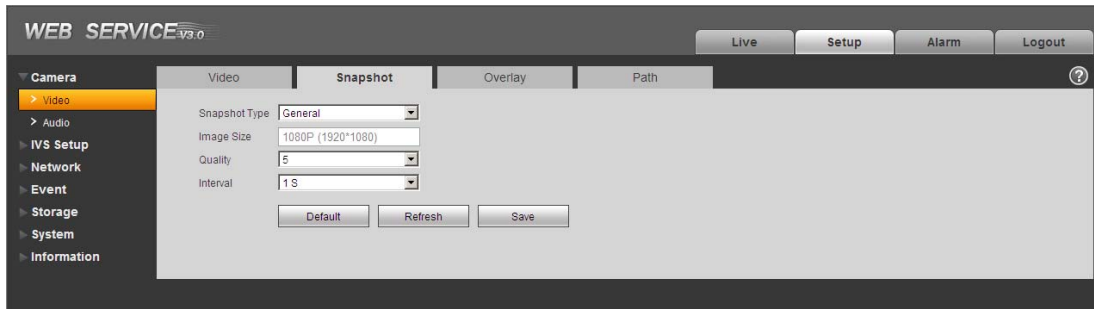


Figure 2-2

Please refer to the following sheet for detailed information.

Parameter	Function
Snapshot type	<p>There are two modes: general (schedule) and Event (activation).            General (schedule) snapshot is to snap in the specified period.            Event (Activation) snapshot is to snap when the motion detect, camera masking, local alarm event occurrence.            If you want to use this function, please make sure:</p> <ul style="list-style-type: none"> <li>● The event occurred during the specified period.</li> <li>● Motion detect, video masking, local alarm and corresponding snap function are all enable.</li> </ul>
Image size	It has relationship with the resolution of the main stream.
Quality	It is to set the image quality. There are six levels.
Interval	It is to set snapshot frequency. The value ranges from 1s to 7s.

#### 2.1.1.3 Video Overlay

The video overlay interface is shown as in Figure 2-3.

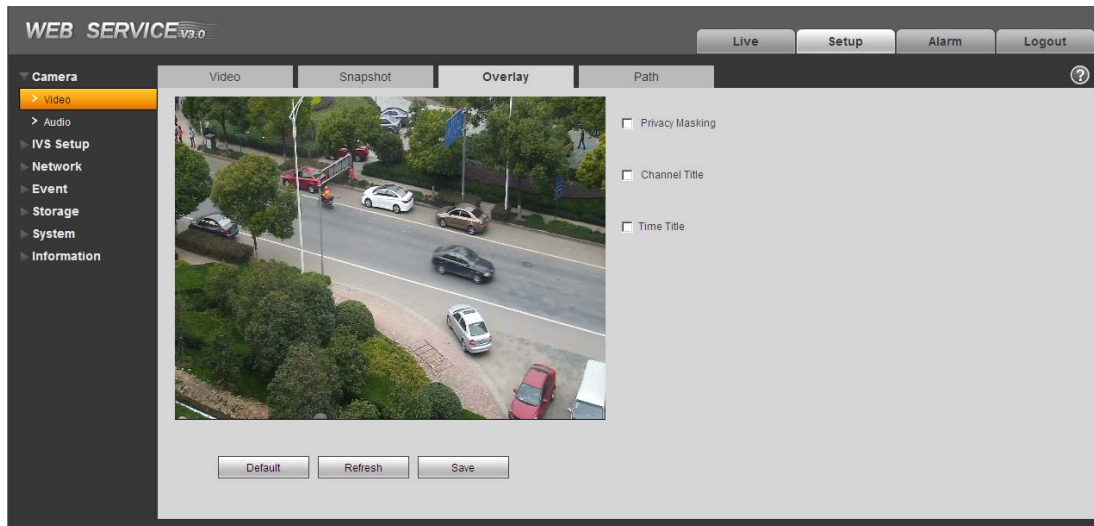




Figure 2-3

Please refer to the following sheet for detailed information.

Parameter	Function
Privacy mask	<ul style="list-style-type: none"> <li>Here you can privacy mask the specified video in the monitor video.</li> <li>Click Setup button, you can set privacy mask region. System max supports 4 privacy mask zones.</li> </ul>
Time Title	<ul style="list-style-type: none"> <li>You can enable this function so that system overlays time information in video window.</li> <li>There is no time title if you do not enable this function here.</li> <li>Click Setup button, you can set time title display region. You can use the mouse to drag the time tile position.</li> </ul>
Channel Title	<ul style="list-style-type: none"> <li>You can enable this function so that system overlays channel information in video window.</li> <li>There is no channel title if you do not enable this function here.</li> <li>Click Setup button, you can set channel title display region. You can use the mouse to drag the channel tile position.</li> </ul>

#### 2.1.1.4 Path

The storage path interface is shown as in Figure 2-4.

Here you can set snap image saved path (  in the preview interface) and the record storage path (  in the preview interface). The snap picture default setup is C:\PictureDownload and record file default setup is C:\RecordDownload. Please click the Save button to save current setup.

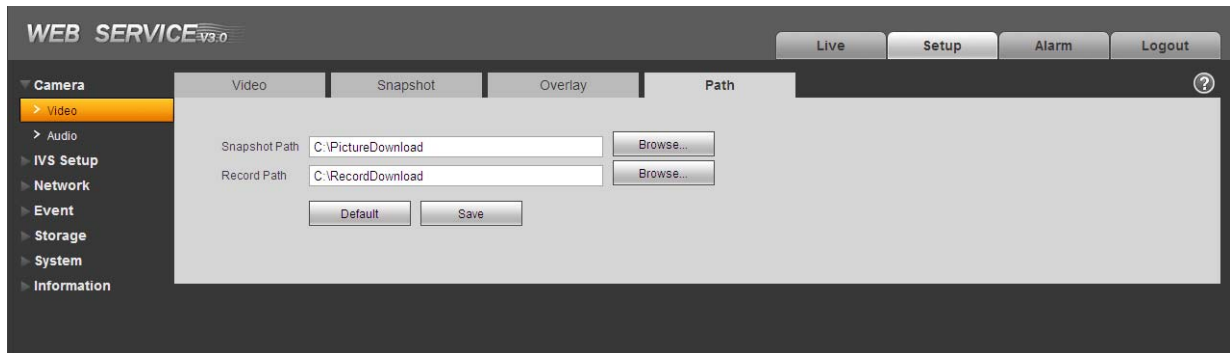


Figure 2-4

### 2.1.2 Audio

The audio interface is shown as below. See Figure 2-5.

#### Important

**Please make sure you have enabled the video function, otherwise you can not enable the audio function.**

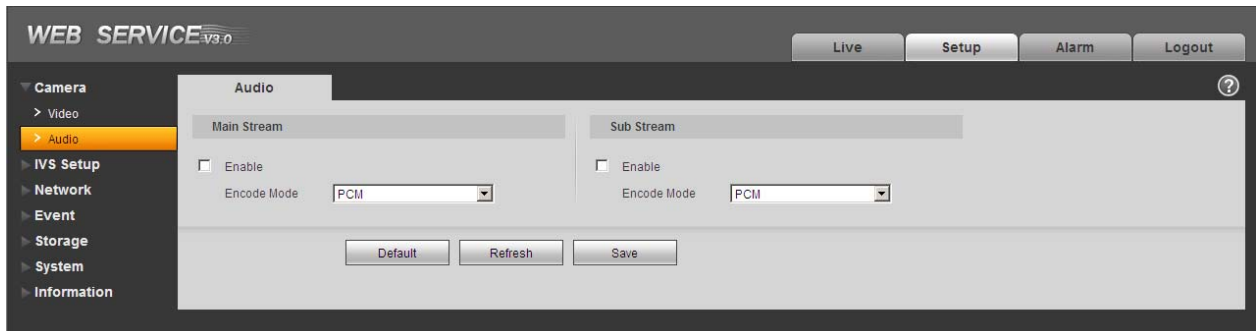


Figure 2-5

Please refer to the following sheet for detailed information.

Parameter	Function
Audio enable	<ul style="list-style-type: none"> <li>● Main stream: Recorded file only contains video by default. You need to check the audio box here to enable audio function so that the main stream the network transmitted is audio/video composite stream.</li> <li>● Sub (Extra) stream: Recorded file only contains video by default. You need to check the audio box here to enable audio function so that the extra stream the network transmitted is audio/video composite stream.</li> </ul>
Encode mode	<p>The encode mode of the main stream and extra stream include PCM, G.711A and G.711Mu.</p> <p>The setup here is for audio encode mode and the bidirectional talk encode both.</p>

## 2.2 IVS Setup

### 2.2.1 Global Setup

The global setup interface is shown as in Figure 2-6.

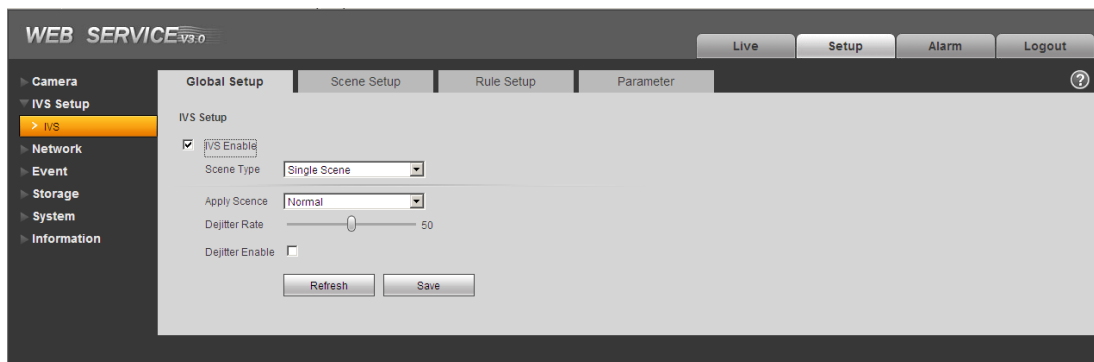


Figure 2-6

Please refer to the following sheet for detailed information.

Parameter	Function
IVS enable	Check the box here to enable IVS function.
Scene type	<p>It includes: panorama, single scene and multiple-scene.</p> <ul style="list-style-type: none"> <li>● Panorama: Realize the intelligent analytics of current monitor video after you enabled the preview function.</li> <li>● Single scene: Realize the intelligent analytics of one scene.</li> <li>● Multiple-scene: It is to realize the intelligent analytics of several scenes and the scenes support tour function.</li> </ul>
Appply scene	The default setup is normal.

Parameter	Function
De-jitter	Here you can set device de-jitter rate.
De-jitter enable	Check the box here to enable de-jitter module.

## 2.2.2 Scene Setup

The scene setup is shown as in Figure 2-7.

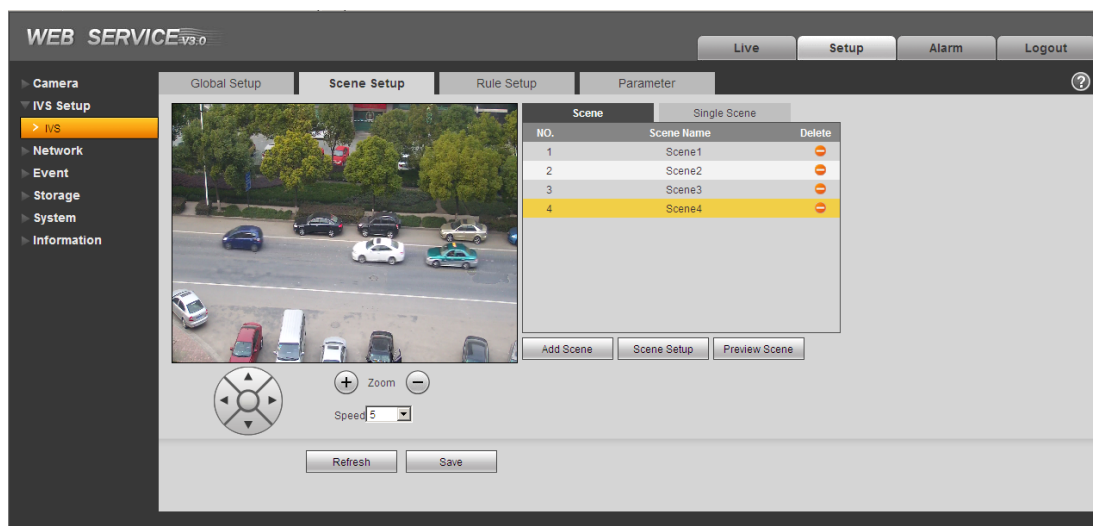





Figure 2-7

Please refer to the following sheet for detailed information.

Parameter	Function
Add scene	Click it to add a scene.
Scene setup	Click it to set current monitor video as the corresponding scene and get a number.
Preview scene	Click it to preview the selected scene.
Zoom	Click  to zoom in and click  to zoom out.
PTZ	Click PTZ button  to adjust scene position.
Speed	It is to set PTZ movement speed. The value ranges from 1 to 8.

### 2.2.2.1 Single Scene

In Figure 2-6, select the single scene from the scene type list, you can see the single scene interface is shown as in Figure 2-8.

Here you can select one item from the No. list to view one monitor scene.

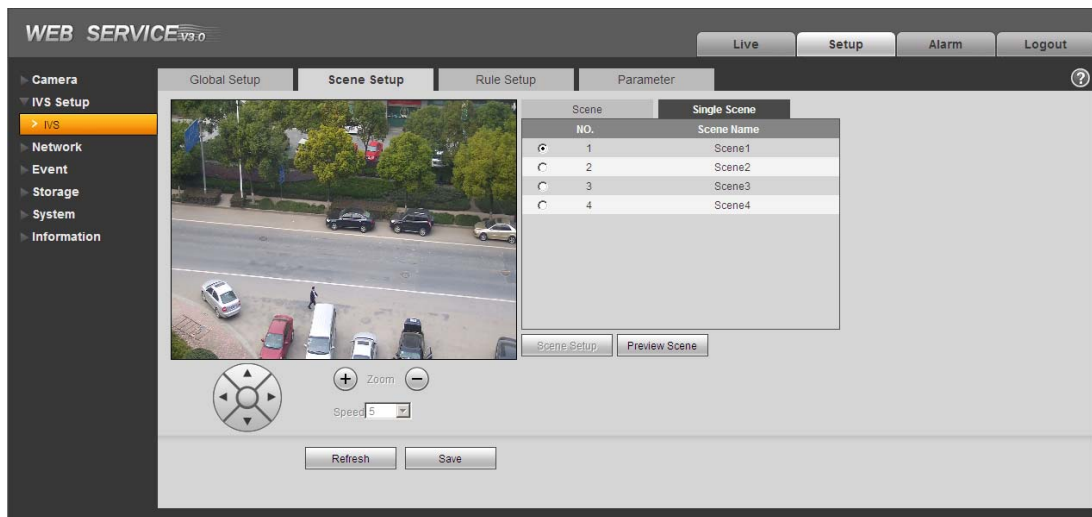


Figure 2-8

### 2.2.2.2 Multiple-scene track

In Figure 2-6, select the Multiple-scene from the scene type list, you can see the multiple-scene interface is shown as in Figure 2-9.

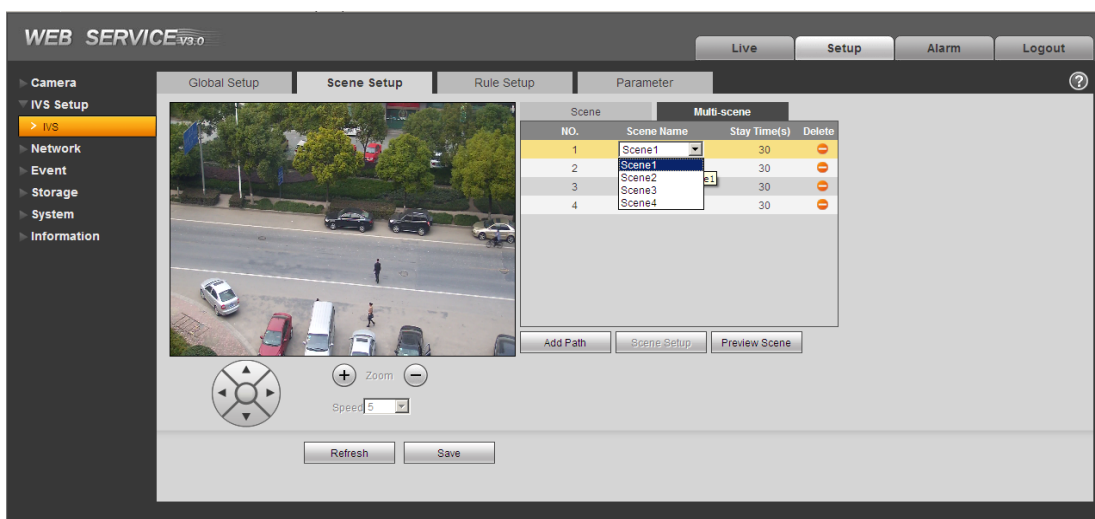


Figure 2-9

In Figure 2-9, click Add scene button you can set tour point during the scene tour process. Move the mouse to the Scene name list; you can select several scenes as a tour. Move the mouse to the Stay time, you can set stay time period.

### 2.2.3 Rule Setup

The rule setup interface is shown as in Figure 2-10.

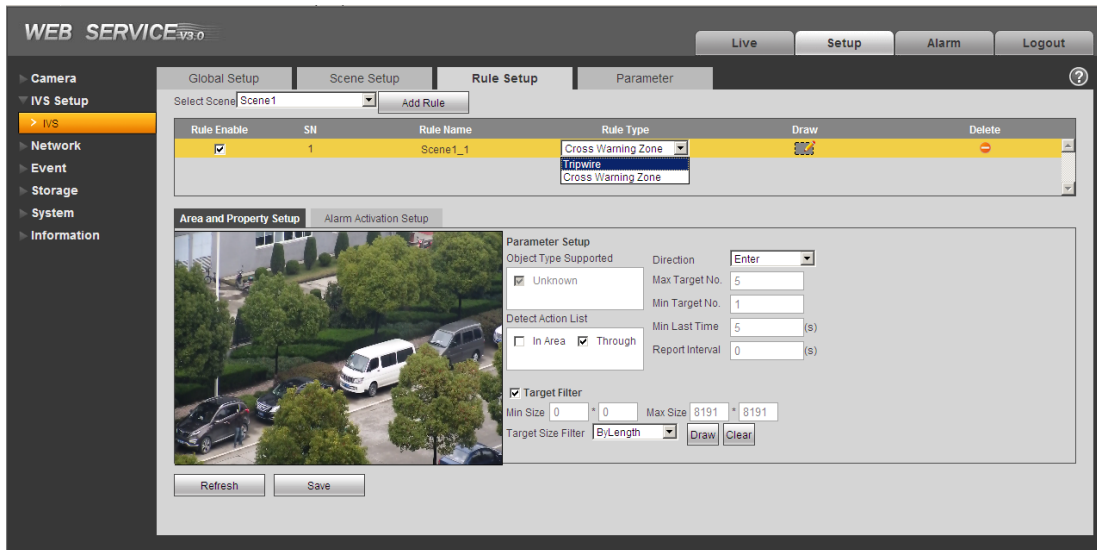




Figure 2-10

Please refer to the following sheet for detailed informaiton.

Parameter	Function
Select scene.	You can select the scene from the dropdown list so that you can add the corresponding rule.
Add rule	Click it to add a rule to the selected scene.
Rule enable	Check the box here to enable the rule.
Rule name	Move you mouse to the rule name column to set a name.
Rule type	Move you mouse to the Rule type column to set the rule type. The option includes: Tripwire/Cross warning zone.
Draw rule	Click button  to draw current rule.
Delete rule	Click button  to delete current rule.

### 2.2.3.1 Tripwire

The tripwire interface is shown as in Figure 2-11.

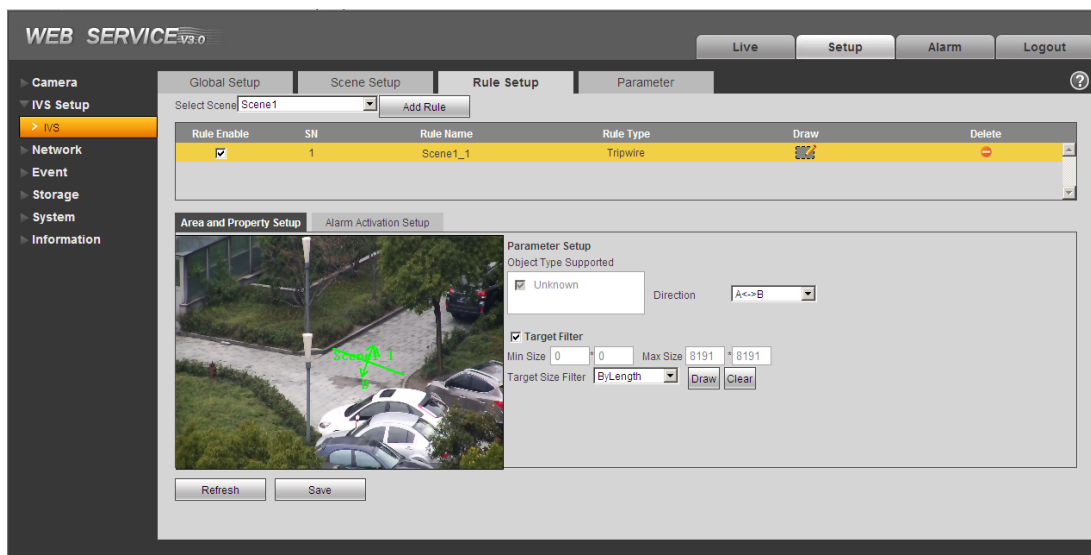
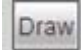
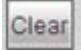


Figure 2-11

Please refer to the following sheet for detailed informaiton.

Parameter	Function
Object type supported	You can select an object type here. The default setup is Unknown.
Direction	It is to set tripwire direction. The option includes: A->B、B->A、A<->B.
Target filter	Check the box here to enable this function and then click button  , you can set the target filter model in this scene for this rule. Click the button  , you can remove selected target filter model.

### 2.2.3.2 Cross Warning Zone

The cross warning zone interface is shown as in Figure 2-12.



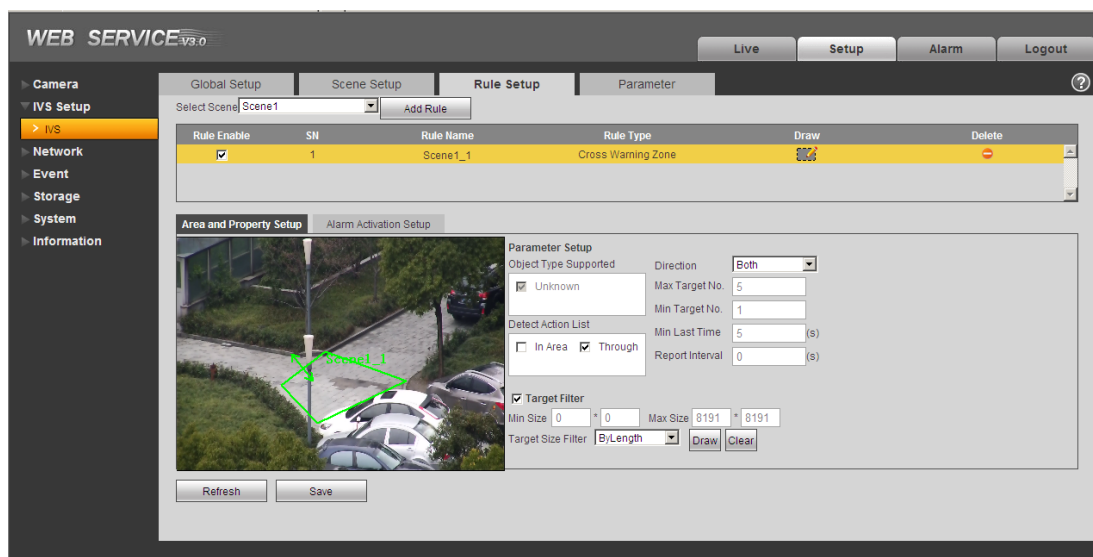
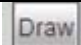
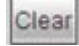


Figure 2-12

Please refer to the following sheet for detailed informaiton.

Parameter	Function
Object type supported	You can select an object type here. The default setup is Unknown.
Detect action list	<ul style="list-style-type: none"> <li>In area: When the tracking object is in the detect zone and the stay time is more than the time threshold you set here, system can activate an alarm.</li> <li>Through area: System can generate an alarm when the tracking object is crossing the limit you set here.</li> </ul>
Direction	It is for the Through area option in the Detect action list item. It is to set the cross direction. The option includes: in/out/both (in&out)
Max target No.	It is for the In area option in the Detect action list item. It is to set the alarm activation amount in the zone. System will not generate an alarm when the object amount in the zone is more than the threshold you set here.
Min target No.	It is for the In area option in the Detect action list item. It is to set the alarm activation amount in the zone. System will not generate an alarm when the object amount in the zone is less than the threshold you set here.
Min last time	It is for the In area option in the Detect action list item. Here is to set the min time between the target in the zone and an alarm activation occurrence.
Report interval	It is for the In area option in the Detect action list item. It is to set alarm period. System just alarms once if the value is 0 here.
Target filter	Check the box here to enable this function and then click button  , you can set the target filter model in this scene. Click the button  , you can remove selected target filter model.

### 2.2.3.3 Alarm Activation Setup

Alarm activation setup is shown as in Figure 2-13.

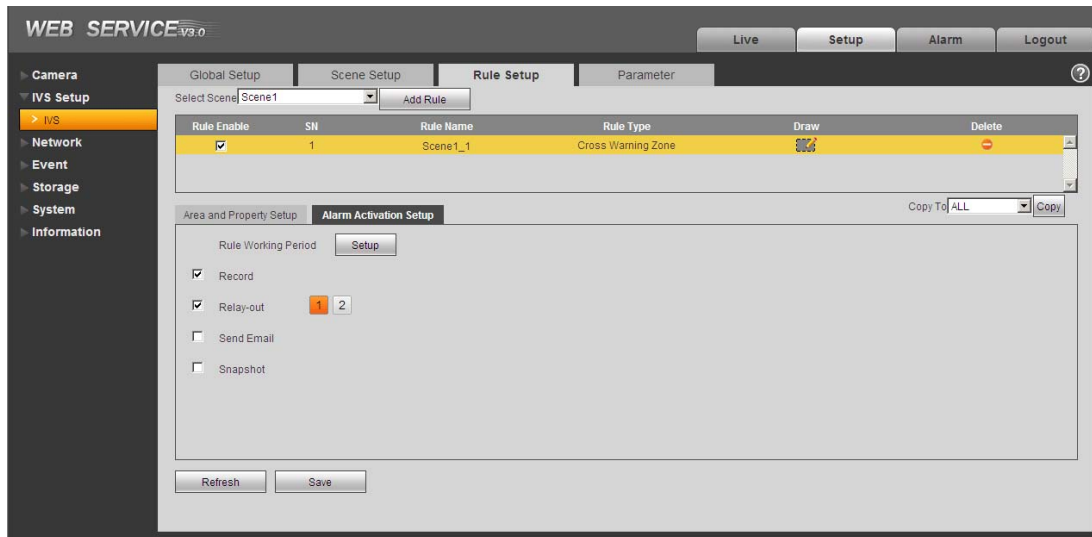
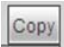


Figure 2-13

Please refer to the following sheet for detailed informaiton.

Parameter	Function
Rule Working period	Here you can set rule arm and disarm period. Please click the Setup button to set.
Record	Check the box here so that the device can record when alarm activation occurred.
Relay output	Check the box here so that the device can output an alarm when alarm activation occurred.
Send e-mail	<ul style="list-style-type: none"><li>• Check the box here so that the device can send out an email when alarm activation occurred.</li><li>• Please note current function is null when the device is offline, or IP conflict occurred.</li></ul>
Snapshot	Check the box here so that the device can snapshot when alarm activation occurred.
Copy	Select a rule name from the dropdown list and then click  button; you can copy the alarm activation setup of current rule to the selected rule.

### 2.2.4 Parameter

The parameter interface is shown as in Figure 2-14.

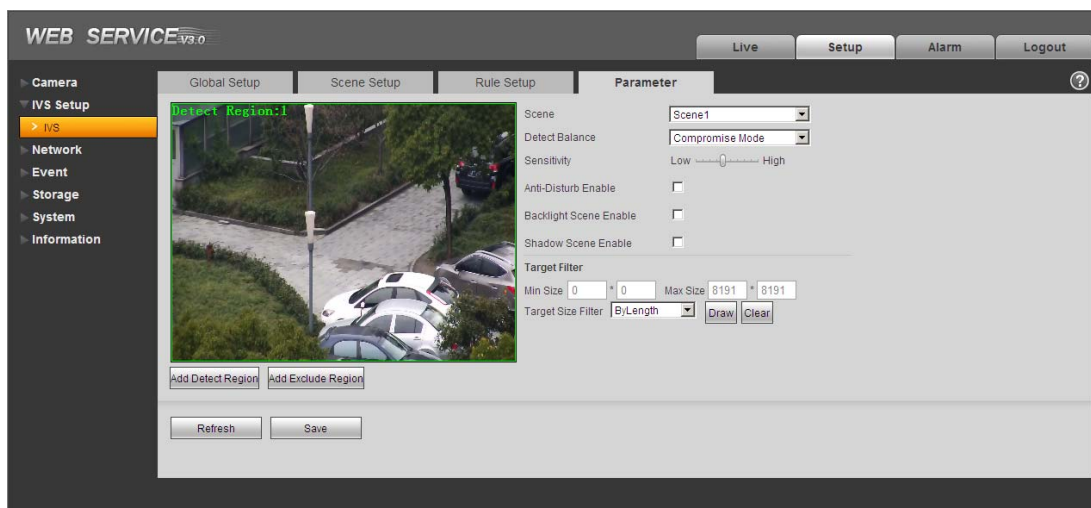

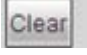




Figure 2-14

Please refer to the following sheet for detailed informaiton.

Parameter	Function
Scene	Please select a scene from the dropdown list you want to set.
Detect balance	There are three modes: compromise mode, omission detect less and error detect less.
Sensitivity	The level ranges from 1 to 10. The default setup is 5. The higher the sensitivity is, the easier for the device to detect the low contrast object and small object. At the same time, the error detect may become more.
Anti-disturbance mode	It is to control the random disturbance in the scene.
Backlight scene enable	Check the box here so that the device can have higher recognition capability in the backlight scene.
Shadow scene enable	Check the box here so that the device can have higher recognition capability in the shadow scene.
Target filter	Click button  , you can set the target filter model in this scene. Click the button  , you can remove selected target filter model.
Add detect region	Click button  , you can draw a detection zone.
Add excluded region	Click button  , you can draw the privacy mask (shield) zone.

## 2.3 Network

### 2.3.1 TCP/IP

The TCP/IP interface is shown as in Figure 2-15.

WEB SERVICE v3.0

Live Setup Alarm Logout

Camera  
IVS Setup  
Network  
TCP/IP  
Connection  
PPPoE  
DDNS  
IP Filter  
SMTP(Email)  
UPnP  
SNMP  
Bonjour  
Multicast  
IEEE802  
QoS  
Event  
Storage  
System  
Information

TCP/IP

Host Name: IPDome

Ethernet Card: Wire( DEFAULT)

Mode: ☒ Static ☐ DHCP

MAC Address: 00 . 17 . eb . 70 . 79 . 54

IP Version: IPv4

IP Address: 10 . 64 . 0 . 42

Subnet mask: 255 . 255 . 0 . 0

Default Gateway: 10 . 64 . 0 . 1

Preferred DNS Server: 8 . 8 . 8 . 8

Alternate DNS Server: 8 . 8 . 8 . 8

☒ Enable ARP/Ping to set IP address service

Default Refresh Save

Figure 2-15

Please refer to the following sheet for detailed information.

Parameter	Function
Host Name	It is to set current host device name.
Ethernet Card	Please select the Ethernet port if the device has several network cards.
Mode	<p>There are two modes: static mode and the DHCP mode.</p> <ul style="list-style-type: none"><li>● The IP/subnet mask/gateway are null when you select the DHCP mode to auto search the IP.</li><li>● If you select the static mode, you need to set the IP/subnet mask/gateway manually.</li><li>● Besides, IP/subnet mask/gateway and DHCP are read-only when the PPPoE dial is OK.</li></ul>
Mac Address	It is to display host Mac address. It is read-only.

IP Version	<p>It is to select IP version. IPV4 or IPV6.</p> <p>You can access the IP address of these two versions.</p> <ul style="list-style-type: none"> <li>● <b>Please note system needs to check the validity of all IPv6 addresses. The IP address and the default gateway shall be in the same IP section. That is to say, the specified length of the subnet prefix shall have the same string.</b></li> <li>● <b>When PPPoE function is enabled, the IP/subnet mask/default gateway is read-only. You can not set or restore default setup.</b></li> </ul>
IP Address	Please use the keyboard to input the corresponding number to modify the IP address and then set the corresponding subnet mask and the default gateway.
Default Gateway	It is the similar gateway of the IPv4. It shall not be left in blank.
Preferred DNS	DNS IP address. It is the similar DNS of the IPv4. It shall not be left in blank.
Alternate DNS	Alternate DNS IP address. It is the similar DNS of the IPv4. It shall not be left in blank.
Enable ARP/Ping set device IP address service.	<p>You can use ARP/Ping command to modify or set the device IP address if you know the device MAC address.</p> <p>Before the operation, please make sure the speed dome and the PC in the same LAN. This function is on by default.</p> <p>You can refer to the steps listed below.</p> <p><b>Step 1:</b> Get an IP address. Set the speed dome and the PC in the same LAN.</p> <p><b>Step 2:</b> Get the physical address from the label of the speed dome.</p> <p><b>Step 3:</b> Go to the Run interface and then input the following commands.</p> <pre>arp -s &lt;IP Address&gt; &lt;MAC&gt; ping -I 480 -t &lt;IP Address&gt;</pre> <p>Such as: arp -s 192.168.0.125 11-40-8c-18-10-11 ping -I 480 -t 192.168.0.125</p> <p><b>Step 4:</b> Reboot the device.</p> <p><b>Step 5:</b> You can see the setup is OK if you can see there are output information such as "Reply from 192.168.0.125 ..." from the command output lines. Now you can close the command line.</p> <p><b>Step 6:</b> Open the browse and then input http://&lt;IP address&gt;. Click the Enter button, you can access now.</p>

### 2.3.2 Connection

The connection interface is shown as in Figure 2-16.

Figure 2-16

Please refer to the following sheet for detailed information.

Parameter	Function
Max connection	It is the max Web connection for the same device. The value ranges from 1 to 20. The default setup is 10.
TCP port	The value ranges from 1025 to 65535. The default value is 37777. You can input the actual port number if necessary.
UDP port	The value ranges from 1025 to 65535. The default value is 37778. You can input the actual port number if necessary.
HTTP port	The value ranges from 1025 to 65535. The default value is 80. You can input the actual port number if necessary.

RTSP port	<ul style="list-style-type: none"> <li>Usually, the default value is 554. You do not need to input again if you are using the default value. When you are using QuickTime (Apple browser) or VLC play real-time video, you can use the following format to play. The Blackberry also supports this function.</li> <li>Real-time monitor bit stream Url format. Please specify the channel number, bit stream type in the Url if you are requesting real-time monitor bit stream Rtsp stream media service. You still need to provide user name or password if it has verification information.</li> <li>When you are using Blackberry phone to access, the bit stream mode shall be H.264B, resolution is CIF and the audio shall be disabled.</li> <li>The Url format is shown as below:  rtsp://username:password@ip:port/cam/realmonitor?channel=1&amp;subtype=0  You need to input the following items manually.  Username/password/IP/port/subtype.  The IP is device IP and the port default value is 554. You can leave it in blank if it is the default value. The channel number begins with 1.  subtype: bit stream type, main stream is 0 (subtype=0) and extra stream is 1 (subtype=1) .  You do not need to input the user name and password if you do not need the verification. Such as:  Main stream: rtsp://ip:port/cam/realmonitor?channel=1&amp;subtype=0</li> </ul>
HTTPS Enable	It is to enable HTTPs communication service control. If you enable this function, you can use https://ip:port to login the device. In data encryption protection mode, you can use https://ip to login if you are using the default port.
HTTPS Port	The HTTPs communication port value ranges from 1025 to 65535.

### Important

The value 0 to 1024 (excluding the default value of HTTP/RTSP/HTTPs), 1900, 3800, 5000, 5050, 9999, 37776, 37780-37880, 39999 and etc are the special ports value and they are not open for user to set.

### 2.3.3 PPPoE

The PPPoE interface is shown as in Figure 2-17.

Input the PPPoE user name and password you get from the IPS (internet service provider) and enable PPPoE function. Please save current setup and then reboot the device to get the setup activated.

Device connects to the internet via PPPoE after reboot. You can get the IP address in the WAN from the IP address column.

PPPoE is set to connect to the internet. You can get an account from your IPS (Internet service provider), you can set here to dial to the interface. You can see the registered IP address in the interface if your setup is right.

**Please note, you need to go to the IP address item to view the device current device information. You can access the client-end via this address.**

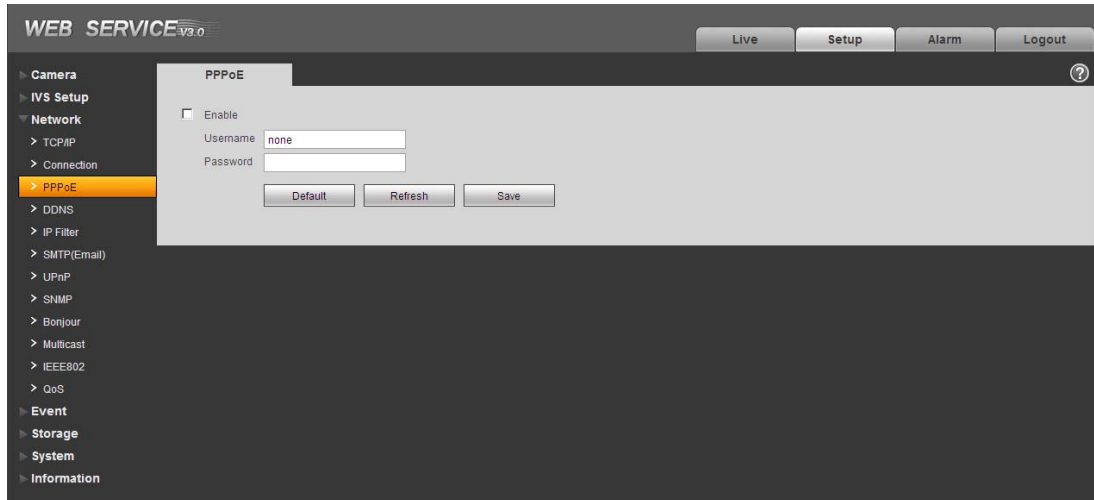


Figure 2-17

### 2.3.4 DDNS

The DDNS interface is shown as in Figure 2-18.

The DDNS is to set to connect the various servers so that you can access the system via the server. Please go to the corresponding service website to apply a domain name and then access the system via the domain. It works even your IP address has changes.

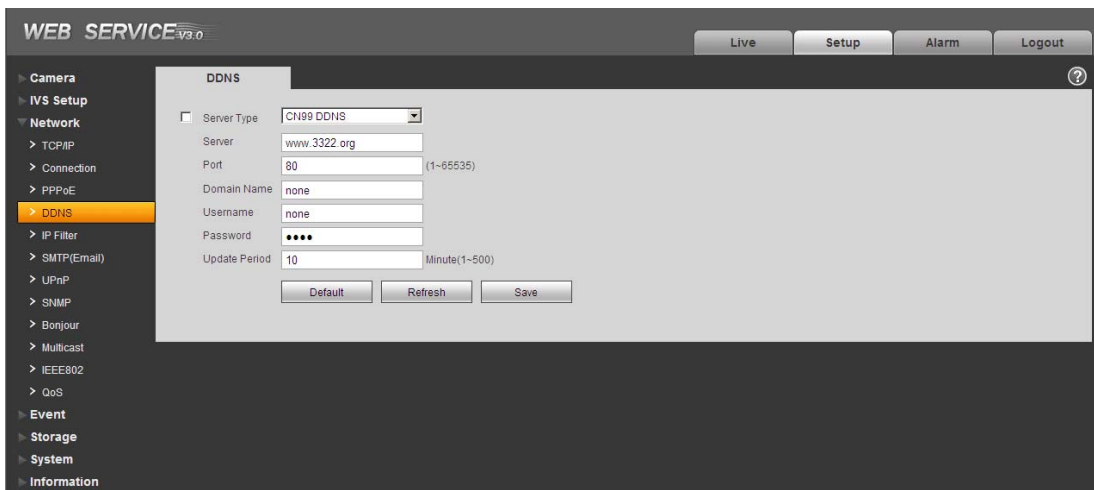


Figure 2-18



Please refer to the following sheet for detailed information.

Parameter	Function
Server Type	You can select DDNS protocol from the dropdown list and then enable DDNS function.
Server IP	DDNS server IP address
Server Port	DDNS server port.
Domain Name	Your self-defined domain name.
User	The user name you input to log in the server.
Password	The password you input to log in the server.
Update period	<ul style="list-style-type: none"> <li>• Device IP and service connection refresh period.</li> <li>• The default setup is 10 minutes.</li> </ul>

### 2.3.5 IP filter

The IP filter interface is shown as in Figure 2-19.

You can enable IP filter function so that some specified IP user can access the speed dome.

You can add IP address or IP address section.

If you do not check the box here, it means there is on access limit.

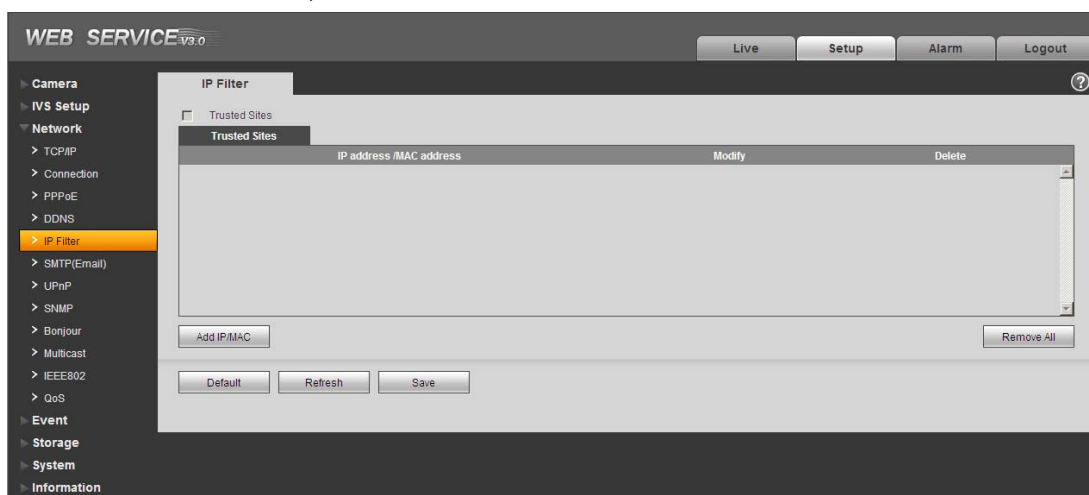


Figure 2-19

### 2.3.6 SMTP (e-mail)

The SMTP interface is shown as in Figure 2-20.

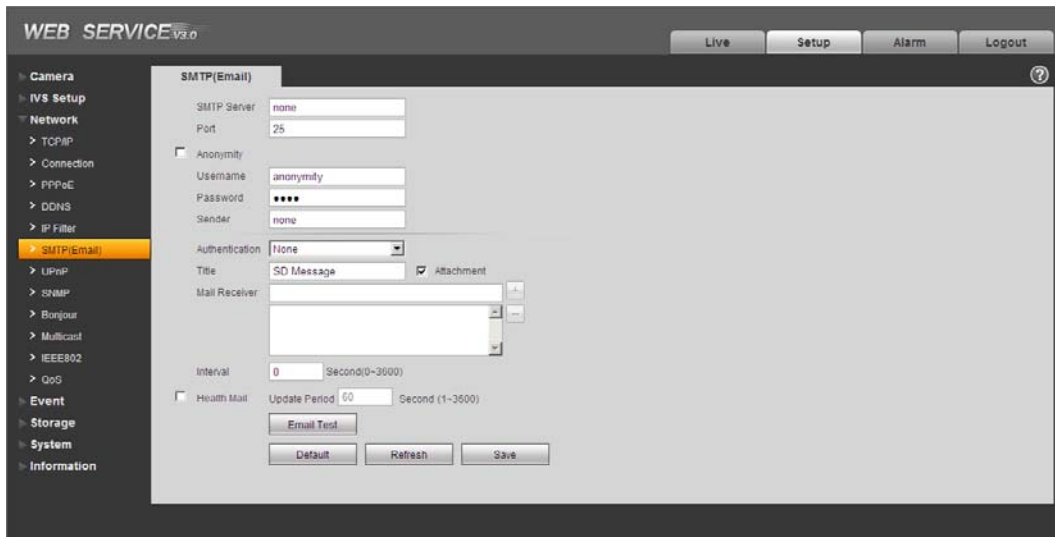


Figure 2-20

Please refer to the following sheet for detailed information.

Parameter	Function
SMTP Server	Input server address and then enable this function.
Port	Default value is 25. You can modify it if necessary.
Anonymity	For the server supports the anonymity function. You can auto login anonymously. You do not need to input the user name, password and the sender information.
User Name	The user name of the sender email account.
Password	The password of sender email account.
Sender	Sender email address.
Authentication (Encryption mode)	You can select SSL or none.
Title (Subject)	Input email subject here.
Attachment	System can send out the email of the snapshot picture once you check the box here.
Mail receiver	Input receiver email address here. Max three addresses.

Parameter	Function
Interval	The send interval ranges from 0 to 3600 seconds. 0 means there is no interval. Please note system will not send out the email immediately when the alarm occurs. When the alarm, motion detection or the abnormality event activates the email, system sends out the email according to the interval you specified here. This function is very useful when there are too many emails activated by the abnormality events, which may result in heavy load for the email server.
Health mail enable	Please check the box here to enable this function.
Update period (interval)	This function allows the system to send out the test email to check the connection is OK or not. Please check the box to enable this function and then set the corresponding interval. System can send out the email regularly as you set here.
Email test	The system will automatically sent out an email once to test the connection is OK or not .Before the email test, please save the email setup information.

### 2.3.7 UPnP

It allows you to establish the mapping relationship between the LAN and the public network.

Here you can also add, modify or remove UPnP item. See Figure 2-21.

In the Windows OS, From Start->Control Panel->Add or remove programs. Click the “Add/Remove Windows Components” and then select the “Network Services” from the Windows Components Wizard. Click the Details button and then check the “Internet Gateway Device Discovery and Control client” and “UPnP User Interface”. Please click OK to begin installation.

Enable UPnP from the Web. If your UPnP is enabled in the Windows OS, the speed dome can auto detect it via the “My Network Places”

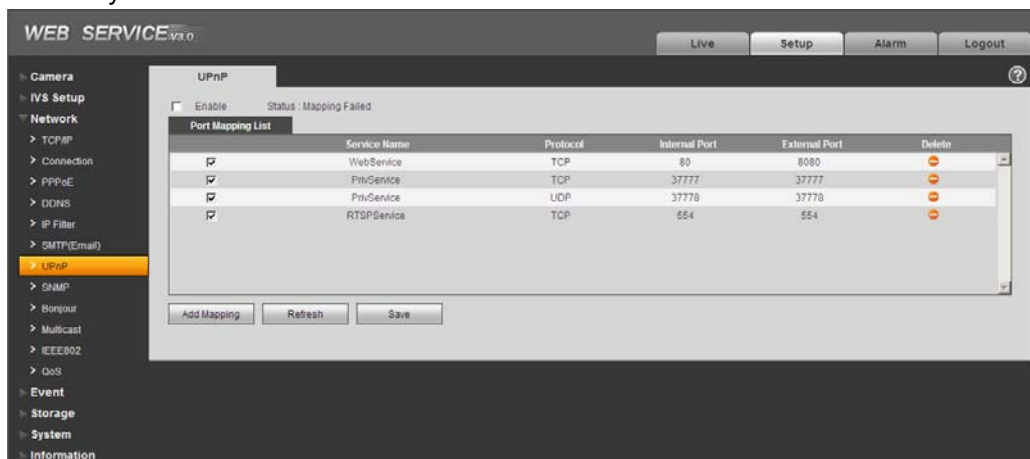


Figure 2-21

### 2.3.8 SNMP

The SNMP interface is shown as in Figure 2-22.

The SNMP allows the communication between the network management work station software and the proxy of the managed device. Please install the software such as MG MibBrowser 8.0c software or establish the SNMP service before you use this function. You need to reboot the device to activate the new setup.

Figure 2-22

Please refer to the following sheet for detailed information.

Parameter	Function
SNMP Port	The listening port of the proxy program of the device. It is a UDP port not a TCP port. The value ranges from 1 to 65535. The default value is 161
Read Community	It is a string. It is a command between the manage process and the proxy process. It defined the authentication, access control and the management relationship between one proxy and one group of the managers. Please make sure the device and the proxy are the same. The read community will read all the objects the SNMP supported in the specified name. The default setup is public.
Write Community	It is a string. It is a command between the manage process and the proxy process. It defined the authentication, access control and the management relationship between one proxy and one group of the managers. Please make sure the device and the proxy are the same. The read community will read/write/access all the objects the SNMP supported in the specified name. The default setup is write.

Parameter	Function
Trap address	The destination address of the Trap information from the proxy program of the device.
Trap port	The destination port of the Trap information from the proxy program of the device. It is for the gateway device and the client-end PC in the LAN to exchange the information. It is a non-protocol connection port. It has no effect on the network applications. It is a UDP port not TCP port. The value ranges from 1 to 165535. The default value is 162.
SNMP version	<ul style="list-style-type: none"> <li>● Check SNMP v1, system only processes the information of V1.</li> <li>● Check SNMP v2, system only processes the information of V2.</li> <li>● Check SNMP v3, you can set account and password. You need to set the corresponding account and password for security verification when the server wants to access the device. At the same time, the V1 and V2 option is null.</li> </ul>

### 2.3.9 Bonjour

The Bonjour interface is shown as below. See Figure 2-23.

Bonjour is based on the multicast DNS service from the Apple. The Bonjour device can automatically broadcast its service information and listen to the service information from other device.

You can use the browse of the Bonjour service in the same LAN to search the speed dome device and then access if you do not know the speed dome information such as IP address.

You can view the server name when the speed dome is detected by the Bonjour. Please note the safari browse support this function. Click the "Display All Bookmarks: and open the Bonjour, system can auto detect the speed dome of the Bonjour function in the LAN.

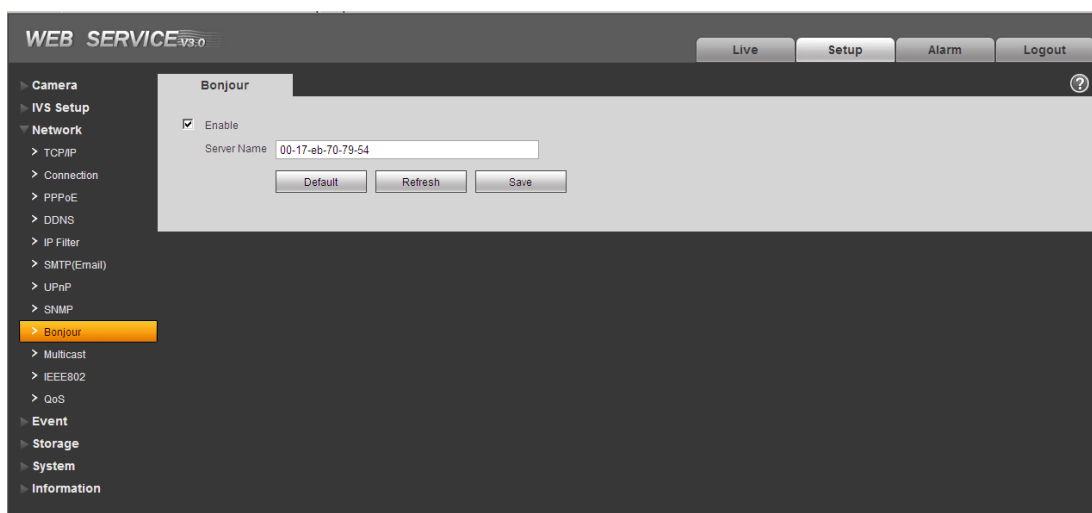


Figure 2-23

### 2.3.10 Multicast

The multicast interface is shown as in Figure 2-24.

Multicast is a transmission mode of data packet. When there is multiple-host to receive the same data packet, multiple-cast is the best option to reduce the broad width and the CPU load. The source host can just send out one data to transit. This function also depends on the relationship of the group member and group of the outer.

Here you can set multicast address and port. You also need to go to Live interface to set the protocol as Multicast.



Figure 2-24

### 2.3.11 IEEE802

IEEE802.1X works standing for local and metropolitan area networks and port based network access control protocol. It supports manual operation of the client to choose means of authenticating by which to control it to access to the Local Area Networks or not. It supports the ability to authenticate, to calculate fee, to ensure security and to maintain requirements. See Figure 2-25.

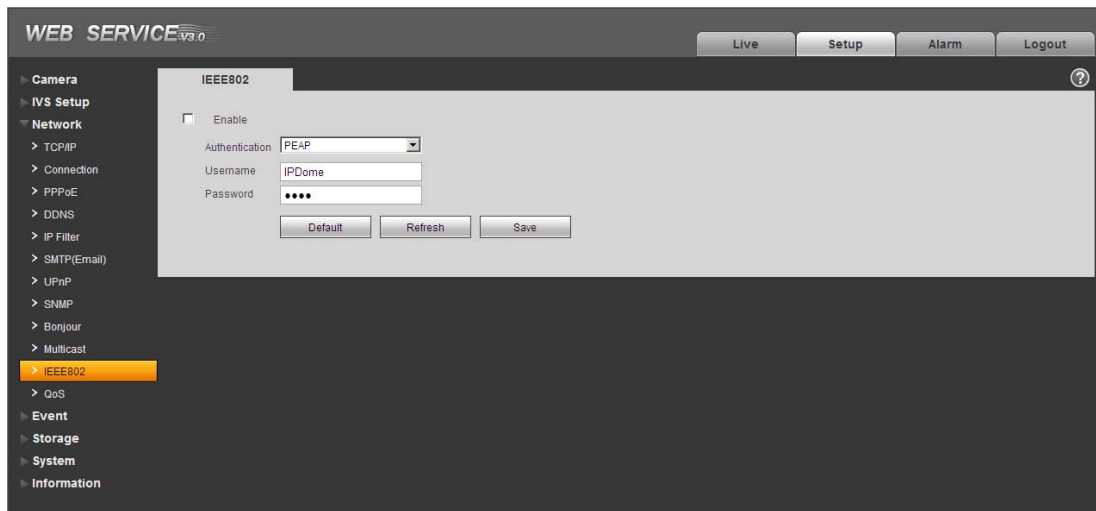


Figure 2-25

Please refer to the following sheet for detailed information.

Parameter	Function
Authentication	PEAP (protected EAP protocol).
Username	It needs the username to login, which is authenticated by the server.
Password	Please input password here.

### 2.3.12 Qos

The QoS interface is shown as below. See Figure 2-26.

QoS (Quality of Service) is network security mechanism. It is a technology to fix the network delay and jam problem and etc. For the network service, the quality of service includes the transmission bandwidth, delay, the packet loss and etc. We can guarantee the transmission bandwidth, lower the delay, and reduce the loss of the data packet and anti-dither to enhance the quality.

We can set the DSCP (Differentiated Services Code Point) of the IP to distinguish the data packet so that the router or the hub can provide different services for various data packets. It can select the different queues according to the priority of the packets and select the bandwidth of the each queue. It can also discard at the different ratio when the broad bandwidth is jam.

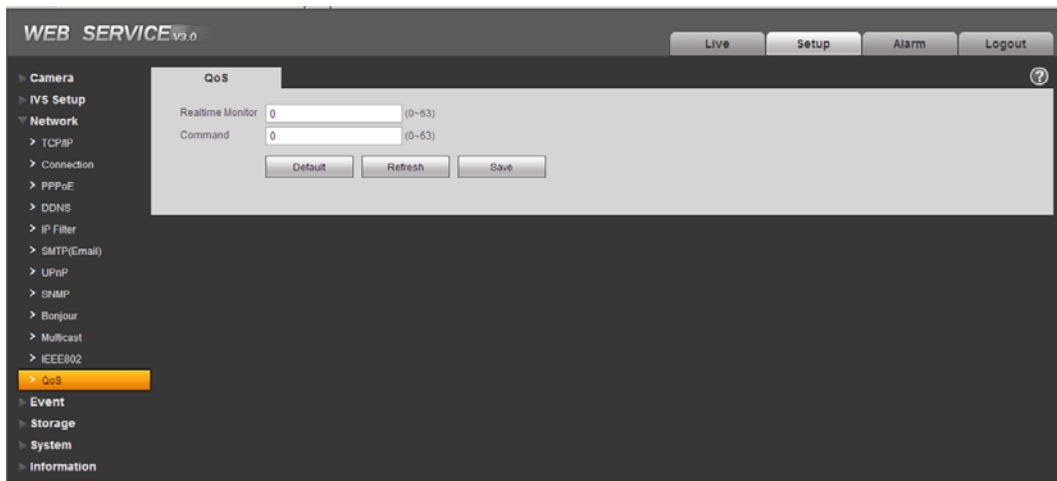


Figure 2-26

Please refer to the following sheet for detailed information.

Parameter	Function
Real-time monitor	The data packet of the network video monitor.
Command	The non-monitor packet such as device setup and search.

## 2.4 Event

### 2.4.1 Video detect

#### 2.4.1.1 Motion Detect

The motion detect interface is shown as in Figure 2-27.

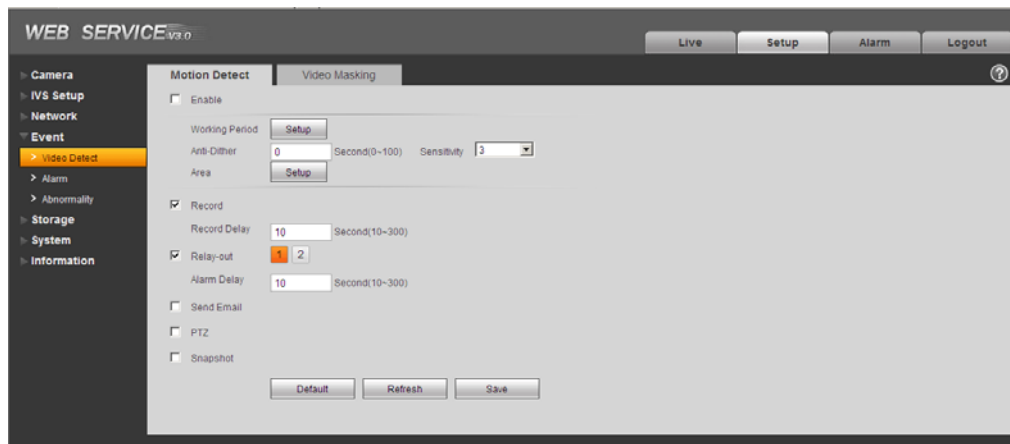
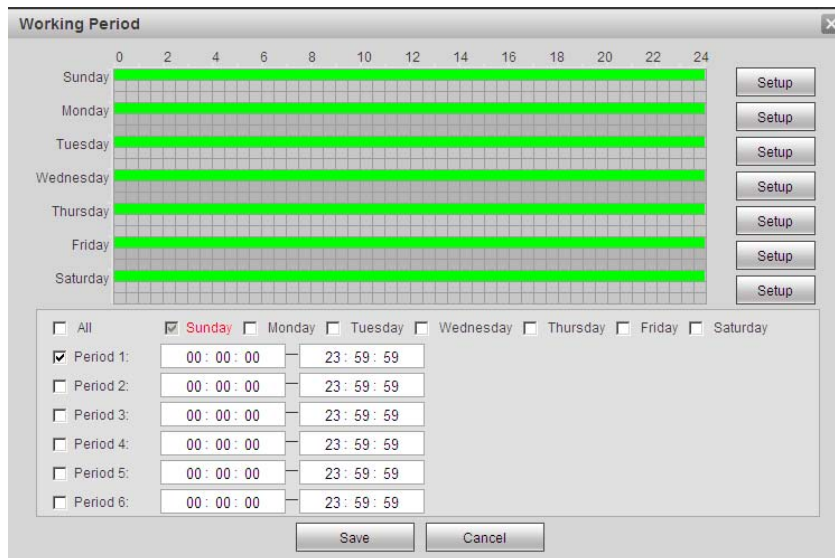


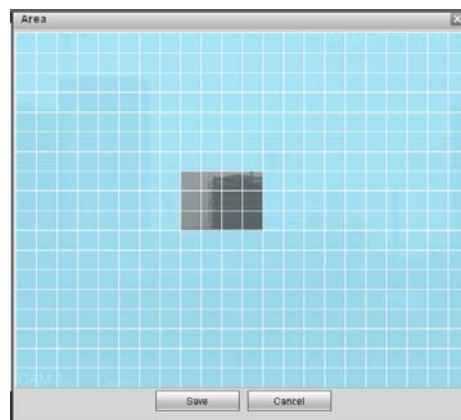
Figure 2-27





The 'Working Period' window features a 24-hour time scale at the top. Below it, a grid shows the days of the week (Sunday through Saturday). Each day has a corresponding 'Setup' button. At the bottom, there are checkboxes for 'All', 'Sunday' (checked), 'Monday', 'Tuesday', 'Wednesday', 'Thursday', 'Friday', and 'Saturday'. Below these are six 'Period' settings, each with a start and end time (e.g., 'Period 1: 00:00:00 to 23:59:59'). 'Period 1' is checked. 'Save' and 'Cancel' buttons are at the bottom right.

Figure 2-28



The 'Area' window displays a large blue grid. In the center, a small 3x3 grid of squares is highlighted in a darker shade. At the bottom, there are 'Save' and 'Cancel' buttons.

Figure 2-29

Please refer to the following sheet for detailed information.

Parameter	Function
Enable	You need to check the box to enable motion detection function.
Sensitivity	There are six levels. The sixth level has the highest sensitivity.

Parameter	Function
Region	<ul style="list-style-type: none"> <li>• There are six levels. The sixth level has the highest sensitivity.</li> <li>• Region: If you select motion detection type, you can click this button to set motion detection zone. The light blue zones are the valid motion detect area. All area are the valid motion detect zone by default. You can use mouse to set invalid area.</li> <li>• Do remember clicking OK button to save your motion detection zone setup.</li> </ul>
Working Period	<ul style="list-style-type: none"> <li>• Motion detection function becomes activated in the specified periods. See Figure 2-28.</li> <li>• There are six periods in one day. Please draw a circle to enable corresponding period.</li> <li>• Select date. If you do not select, current setup applies to today only. You can select all week column to apply to the whole week.</li> <li>• Click OK button, system goes back to motion detection interface; please click save button to exit.</li> </ul>
Anti-dither	System only memorizes one event during the anti-dither period. The value ranges from 0s to 100s.
Relay out	<p>Enable alarm activation function. You need to select alarm output port so that system can activate corresponding alarm device when alarm occurs.</p> <p><b>Please note the relay output number here is for reference only. The alarm output number may vary due to different series products.</b></p>
Alarm Delay	System can delay the alarm output for specified time after motion detect alarm ended. The value ranges from 10s to 300s.
Record channel	System auto activates motion detection channel to record once motion detect alarm occurs (working with motion detection function). Please note you need to go to Storage-> Schedule to set motion detect record period and go to Storage->Record control to set current channel as auto record.
Record Delay	System can delay the record for specified time after motion detect alarm ended. The value ranges from 10s to 300s.
Send Email	If you enabled this function, System can send out email to alert you when alarm occurs and ends.
PTZ	<ul style="list-style-type: none"> <li>• Here you can set PTZ movement when alarm occurs. Such as go to preset x when there is an alarm.</li> <li>• The event type includes: preset, tour and pattern and etc.</li> </ul>
Snapshot	It is snapshot activation function.

### 2.4.1.2 Video Masking

The video masking interface is shown as in Figure 2-30.

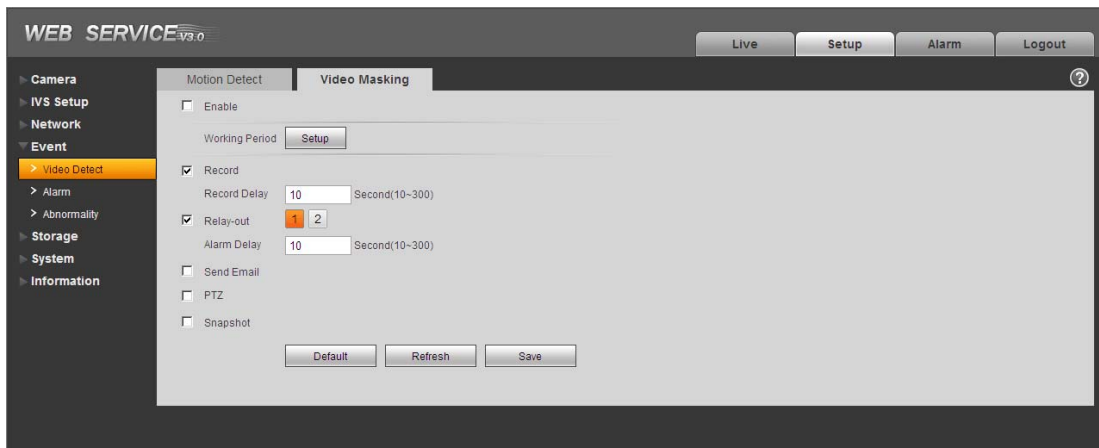


Figure 2-30

Please refer to the following sheet for detailed information.

Parameter	Function
Enable	You need to check the box to enable video masking function.
Sensitivity	There are six levels. The sixth level has the highest sensitivity.
Working Period	<ul style="list-style-type: none"><li>• Video masking function becomes activated in the specified periods.</li><li>• There are six periods in one day. Please draw a circle to enable corresponding period.</li><li>• Select date. If you do not select, current setup applies to today only. You can select all week column to apply to the whole week.</li><li>• Click OK button, system goes back to motion detection interface; please click save button to exit.</li></ul>
Anti-dither	System only memorizes one event during the anti-dither period. The value ranges from 0s to 100s.
Relay out	Enable alarm activation function. You need to select alarm output port so that system can activate corresponding alarm device when video masking alarm occurs. <b>Please note the relay output number here is for reference only. The alarm output number may vary due to different series products.</b>
Alarm Delay	System can delay the alarm output for specified time after video masking alarm ended. The value ranges from 10s to 300s.

Parameter	Function
Record channel	System auto activates motion detection channel to record once video masking alarm occurs (working with motion detection function). Please note you need to go to Storage-> Schedule to set motion detect record period and go to Storage->Record control to set current channel as auto record.
Record Delay	System can delay the record for specified time after video masking alarm ended. The value ranges from 10s to 300s.
Email	If you enabled this function, System can send out email to alert you when alarm occurs.
PTZ	<ul style="list-style-type: none"> <li>Here you can set PTZ movement when alarm occurs. Such as go to preset x when there is an alarm.</li> <li>The event type includes: preset, tour and pattern and etc.</li> </ul>
Snapshot	It is snapshot activation function.

## 2.4.2 Alarm

### 2.4.2.1 Alarm activation

The alarm activation interface is shown as in Figure 2-31.

Figure 2-31

Please refer to the following sheet for detailed information.

Parameter	Function
Enable	You need to check the box to enable this function.

Parameter	Function
Working Period	<ul style="list-style-type: none"> <li>• This function becomes activated in the specified periods.</li> <li>• There are six periods in one day. Please draw a circle to enable corresponding period.</li> <li>• Select date. If you do not select, current setup applies to today only. You can select all week column to apply to the whole week.</li> <li>• Click OK button, system goes back to motion detection interface; please click save button to exit.</li> </ul>
Anti-dither	System only memorizes one event during the anti-dither period. The value ranges from 0s to 100s.
Sensor type	There are two options: NO/NC. From NO to NC, system enables alarm. From NC to NO, system disables alarm.
Relay out	<ul style="list-style-type: none"> <li>• Enable alarm activation function. You need to select alarm output port so that system can activate corresponding alarm device when alarm occurs.</li> <li>• <b>Please note the relay output number here is for reference only. The alarm output number may vary due to different series products.</b></li> </ul>
Alarm Delay	System can delay the alarm output for specified time after alarm ended. The value ranges from 10s to 300s.
Record Channel	System auto activates motion detection channel to record once alarm occurs (working with motion detection function). Please note you need to go to Storage-> Schedule to set current channel as general record.
Record Delay	System can delay the record for specified time after alarm ended. The value ranges from 10s to 300s.
Send Email	If you enabled this function, System can send out email to alert you when alarm occurs and ends.
PTZ	<ul style="list-style-type: none"> <li>• Here you can set PTZ movement when alarm occurs. Such as go to preset x when there is an alarm.</li> <li>• The event type includes: preset, tour and pattern.</li> </ul>
Snapshot	You need to input capture channel number so that system can backup motion detection snapshot file.

#### 2.4.2.2 Relay output

The relay output interface is shown as in Figure 2-32.



Figure 2-32

Please refer to the following sheet for detailed information.

Parameter	Function
Alarm output	There are two output channels. Please click the corresponding button. If you want to enable the alarm activation output function, please press the corresponding button and then trigger. <b>Please note the interface here is for reference only. The alarm output number may vary due to different series products.</b>
Trigger	When the alarm output channel is open, the output port can immediately output an alarm once it occurred.
Refresh	Refresh alarm output status.

### 2.4.3 Abnormality

It includes five statuses: No SD card, capacity warning, SD card error, and disconnection and IP conflict. There are two interfaces for you reference. See Figure 2-33 through Figure 2-37.

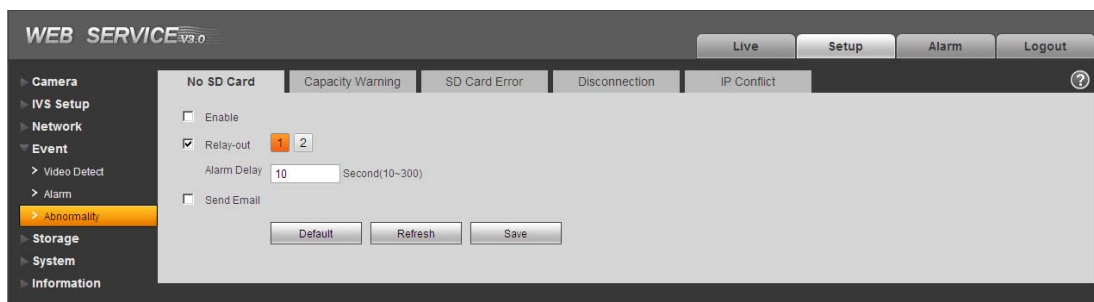


Figure 2-33

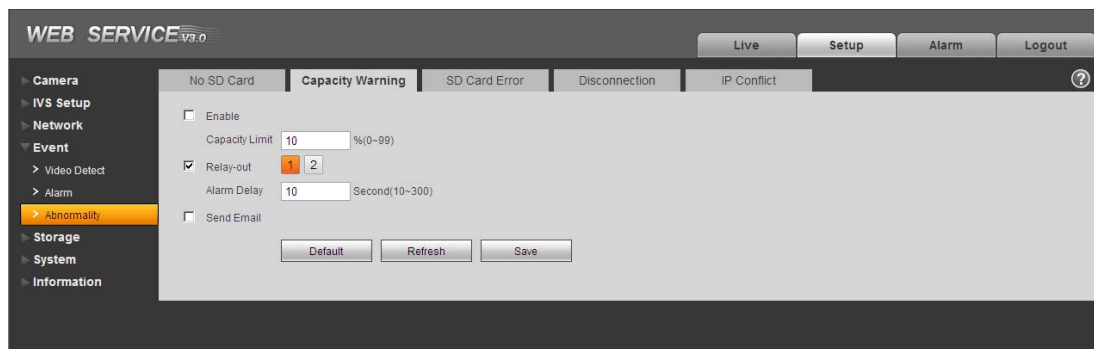


Figure 2-34

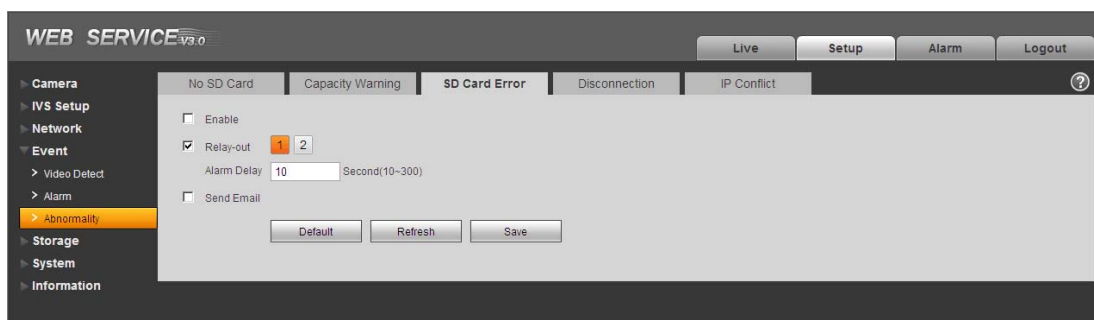


Figure 2-35

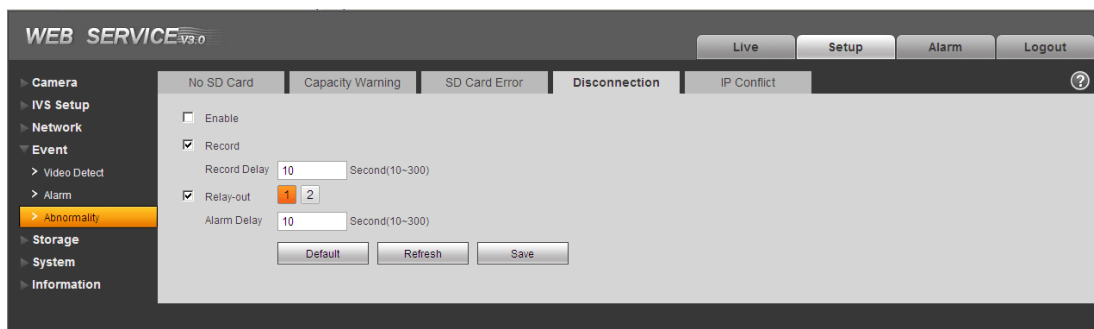


Figure 2-36

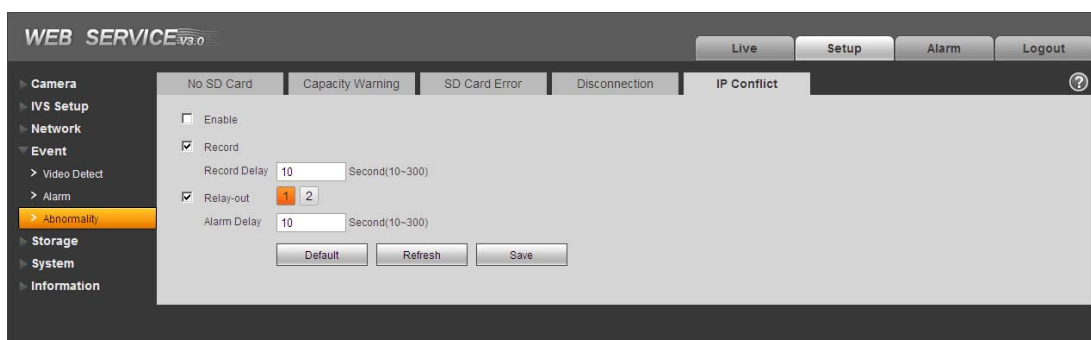


Figure 2-37

Please refer to the following sheet for detailed information.

Parameter	Function
Event Type	<ul style="list-style-type: none"> <li>The abnormal events include: no disk, no space, disk error, net error, offline, IP conflict.</li> <li>You need to draw a circle to enable this function.</li> </ul>
Record	System auto activates channel to record once an alarm occurs (For offline type only. See Figure 2-37. ). You need to check the box to enable this function.
Record Delay	System can delay the record for specified time after alarm ended. The value ranges from 10s to 300s.
Relay Out	The corresponding alarm output channel when alarm occurs. You need to check the box to enable this function.
Relay out Delay	The alarm output can delay for the specified time after alarm stops. The value ranges from 10s to 300s.
Send email	If you enable this function, system can send out email to alarm the specified user.

## 2.5 Storage

### 2.5.1 Record schedule and snapshot schedule

In these two interfaces, you can add or remove the schedule record/snapshot setup. See Figure 2-38. There are three record modes: general (auto), motion detect and alarm. There are six periods in one day. Please make sure you have enabled the corresponding record mode in the Setup->Storage->Conditions.

You can view the current time period setup from the color bar.

- Green color stands for the general record/snapshot.



- Yellow color stands for the motion detect record/snapshot.
- Red color stands for the alarm record/snapshot.

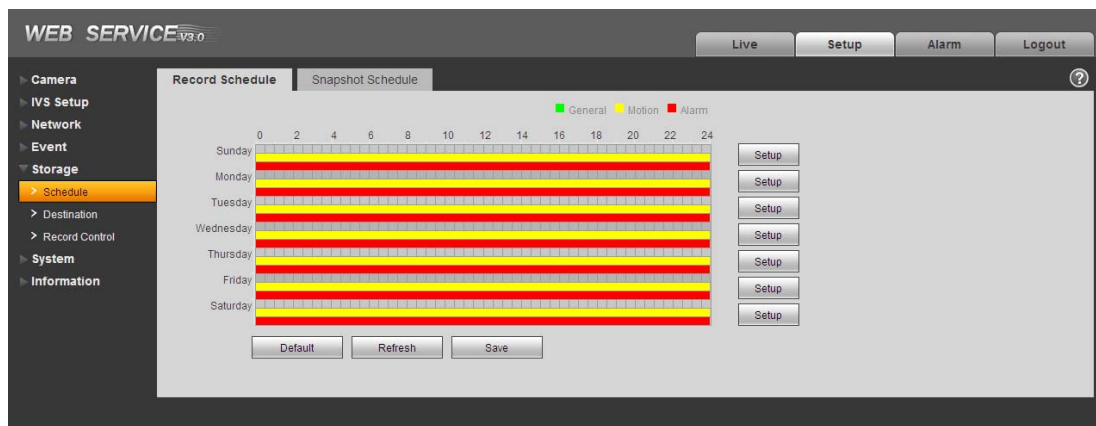


Figure 2-38

## 2.5.2 Destination

The destination interface is shown as in Figure 2-39.

It is to set the storage mode of the speed dome record file or snapshot pictures. There are two options: local storage/FTP. You can only select one mode. System can save according to the event types. It is corresponding to the three modes (general/motion/alarm) in the Schedule interface. Please check the box to enable the save functions.

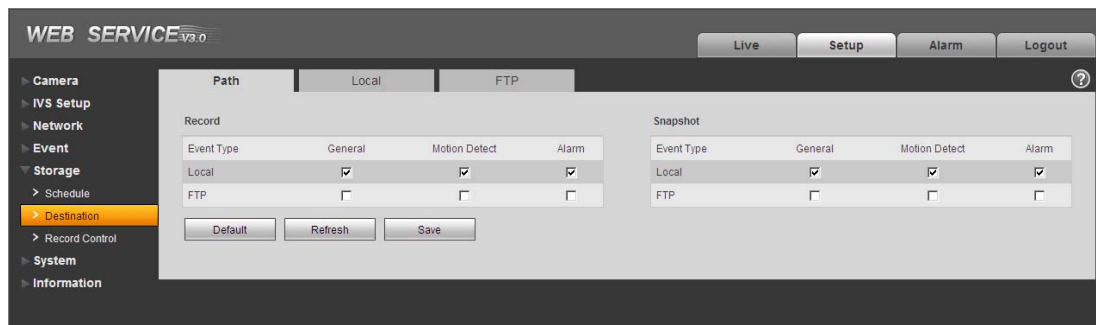


Figure 2-39

Please refer to the following sheet for detailed information.

Parameter	Function
Event Type	It includes: general, motion detect and alarm.
Local	It is to save in the SD card.
FTP	It is to save in the FTP server.

The local interface is shown as in Figure 2-40. Here you can view local SD card information. You can also operate the read-only, write-only, hot swap and format operation.



Figure 2-40

The FTP interface is shown as in Figure 2-41. You need to check the box to enable the FTP function. When network disconnect occurred or there is malfunction. Emergency storage can save the record/snapshot picture to the local SD card.

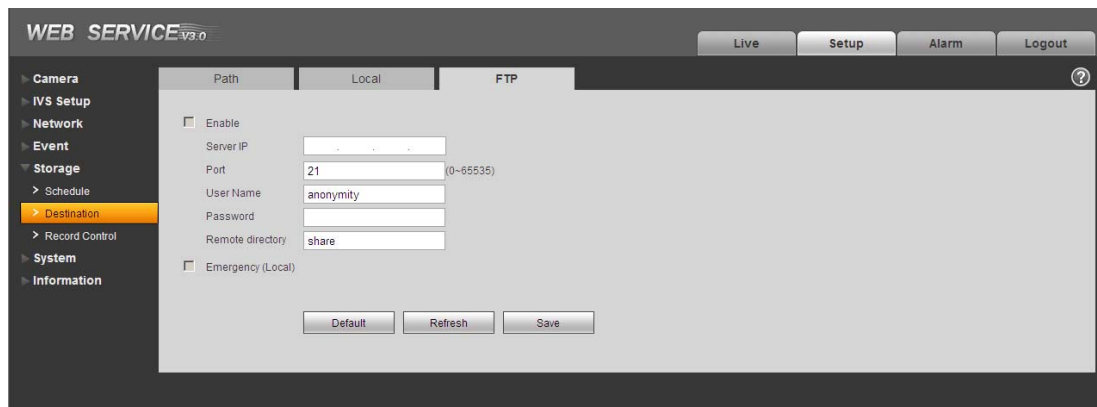


Figure 2-41

### 2.5.3 Record control

The record control interface is shown as in Figure 2-42.

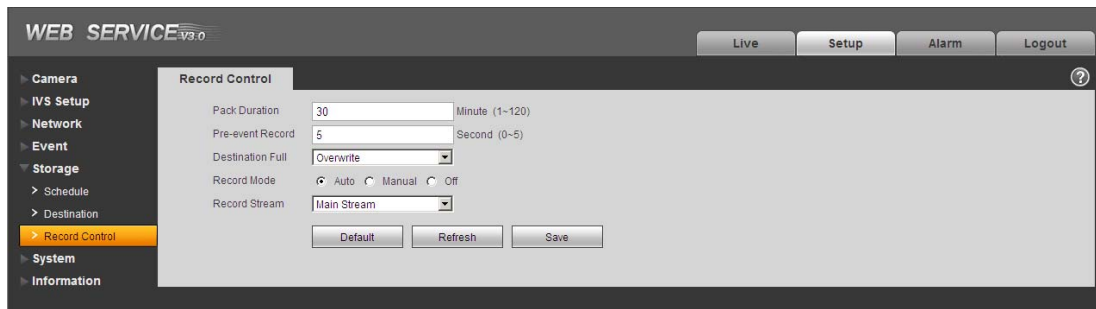


Figure 2-42

Please refer to the following sheet for detailed information.

Parameter	Function
Pack Duration	Here you can select file size. Default setup is 60 minutes.
Pre-record	<p>Please input pre-record value here.</p> <p>For example, you can input 4 here so that system can read the previous four seconds video before the alarm occurrence from the buffer and record the 4 seconds video in the file.</p> <p>Please note, if there is no record when alarm record or motion detect record occurred, system can record the N seconds' video before the event occurrence in the file.</p>
Disk Full	<p>There are two options: stop recording or overwrite the previous files when HDD is full.</p> <ul style="list-style-type: none"> <li>● Stop: Current working HDD is overwriting or current HDD is full, it will stop record.</li> <li>● Overwrite: Current working HDD is full; it will overwrite the previous file.</li> </ul>
Record Mode	There are three modes: Auto/manual/close.
Record Bit Stream	You can select main stream or extra stream.

## 2.6 System

### 2.6.1 General

The general interface includes the general setup and the date/time setup.

#### 2.6.1.1 General

The general interface is shown as in Figure 2-43.

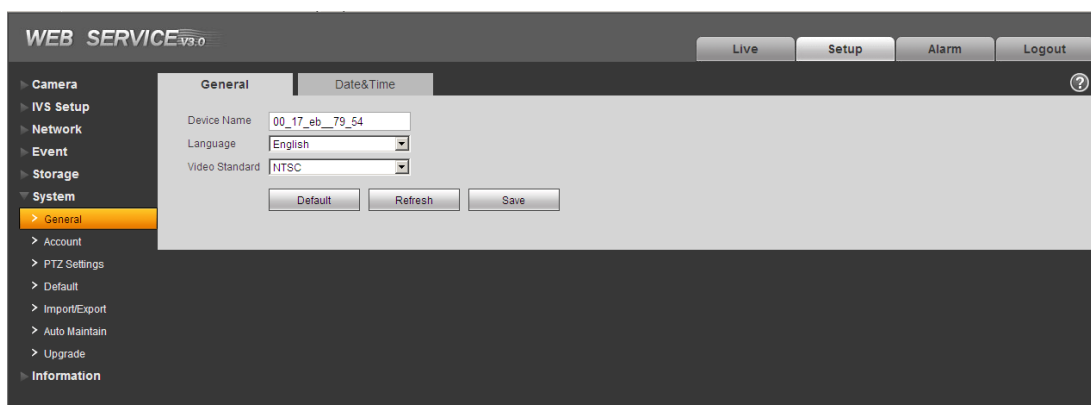


Figure 2-43

Please refer to the following sheet for detailed information.

Parameter	Function
Device Name	It is to set device name.
Video Standard	This is to display video standard.
Language	You can select the language from the dropdown list. <b>Please note the device needs to reboot to get the modification activated.</b>

#### 2.6.1.2 Date and time

The date and time interface is shown as in Figure 2-44

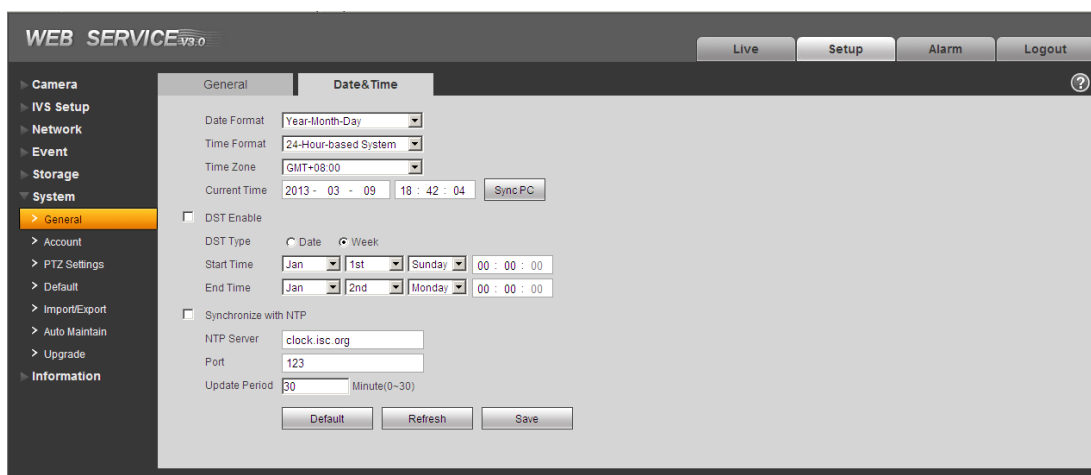


Figure 2-44

Please refer to the following sheet for detailed information.

Parameter	Function
Date format	Here you can select date format from the dropdown list.
Time Format	There are two options: 24-H and 12-H.
Time zone	The time zone of the device.
System time	It is to set system time. It becomes valid after you set.
Sync PC	You can click this button to save the system time as your PC current time.
DST	Here you can set day night save time begin time and end time. You can set according to the date format or according to the week format.
NTP	You can check the box to enable NTP function.
NTP server	You can set the time server address.
Port	It is to set the time server port.
Update period	It is to set the sync periods between the device and the time server. The update function is null if the value is 0.

## 2.6.2 Account

### Note:

- For the character in the following user name or the user group name, system max supports 6-digits. The space in the front or at the end of the string is null. The valid string includes: character, number, and underline.
- The max user amount is 20 and the max group amount is 8. You can add or delete user group.
- The factory default setup includes two levels: user and admin. .User management adopts group/user modes. The user name and the group name shall be unique. One user shall be included in only one group.

### 2.6.2.1 User name

In this interface you can add/remove user and modify user name. See Figure 2-45.

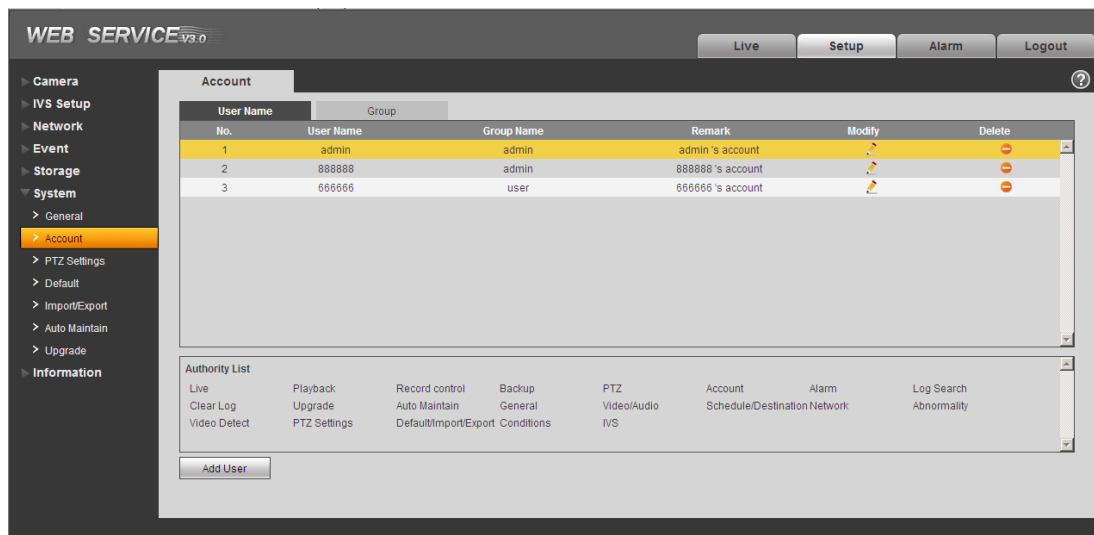


Figure 2-45

**Add user:** It is to add a name to group and set the user rights. See Figure 2-46.

Here you can input the user name and password and then select one group for current user.

Please note the user rights shall not exceed the group right setup.

For convenient setup, please make sure the general user has the lower rights setup than the admin.

**Add User**

User Name:

Password:

Confirm Password:

Group:

Remark:

Authority List: ☒ All

- ☒ Live
- ☒ Playback
- ☒ Record control
- ☒ Backup
- ☒ PTZ

Save Cancel

Figure 2-46

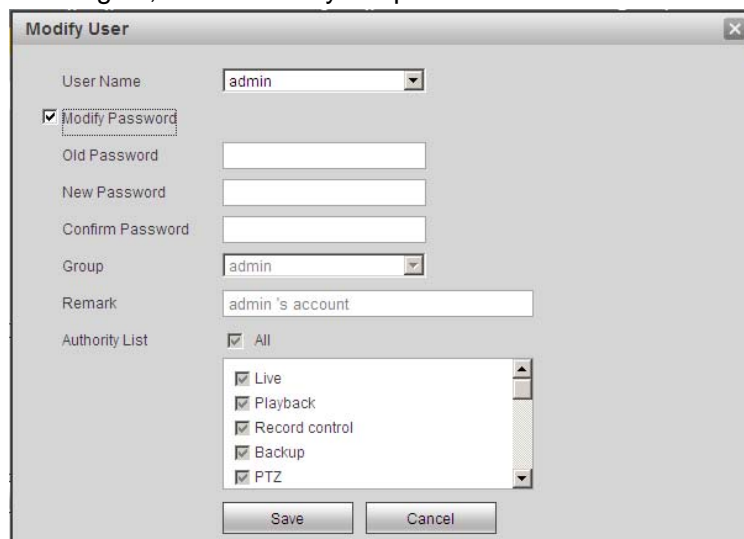
### Modify user

It is to modify the user property, belonging group, password and rights. See Figure 2-47.

### Modify password

It is to modify the user password. You need to input the old password and then input the new password twice to confirm the new setup. Please click the OK button to save.

For the user of the account rights, he can modify the password of other users.



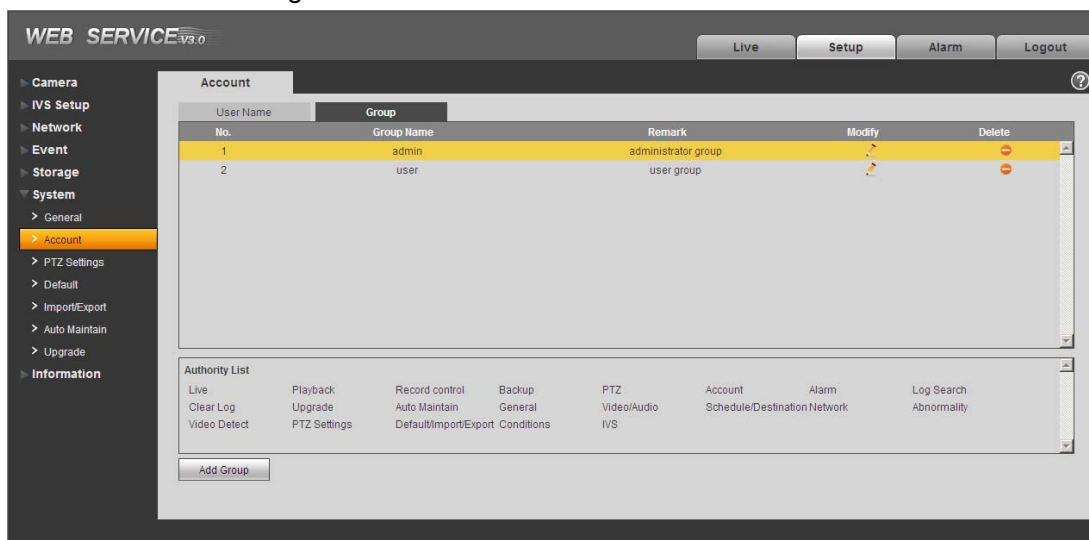
The 'Modify User' dialog box contains the following fields and options:

- User Name: dropdown menu with 'admin' selected.
- ☒ Modify Password: checked checkbox.
- Old Password: text input field.
- New Password: text input field.
- Confirm Password: text input field.
- Group: dropdown menu with 'admin' selected.
- Remark: text input field with 'admin's account'.
- Authority List:
  - ☒ All: checked checkbox.
  - Live: ☒ checked checkbox.
  - Playback: ☒ checked checkbox.
  - Record control: ☒ checked checkbox.
  - Backup: ☒ checked checkbox.
  - PTZ: ☒ checked checkbox.
- Buttons: 'Save' and 'Cancel' at the bottom.

Figure 2-47

### 2.6.2.2 Group

The group management interface can add/remove group, modify group password and etc. The interface is shown as in Figure 2-48.



The 'WEB SERVICE v3.0' interface shows the 'Account' management section. It includes a sidebar menu with options like Camera, IVS Setup, Network, Event, Storage, System, and Information. The main area displays a table of groups:

No.	Group Name	Remark	Modify	Delete
1	admin	administrator group		
2	user	user group		

Below the table is an 'Authority List' section with a grid of checkboxes for various permissions:

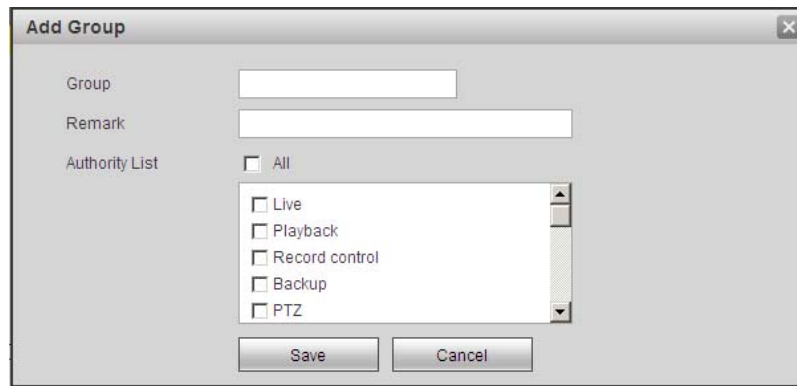
Authority List	
Live	Playback
Record control	Backup
PTZ	Account
Clear Log	Upgrade
Video Detect	PTZ Settings
Auto Maintain	General
Default/Import/Export	Conditions
IVS	Alarm
Schedule/Destination Network	Log Search
Abnormality	

An 'Add Group' button is located at the bottom left of the main area.

Figure 2-48

**Add group:** It is to add group and set its corresponding rights. See Figure 2-49.

Please input the group name and then check the box to select the corresponding rights. It includes: live playback, record control, backup, PTZ control, user management and etc.



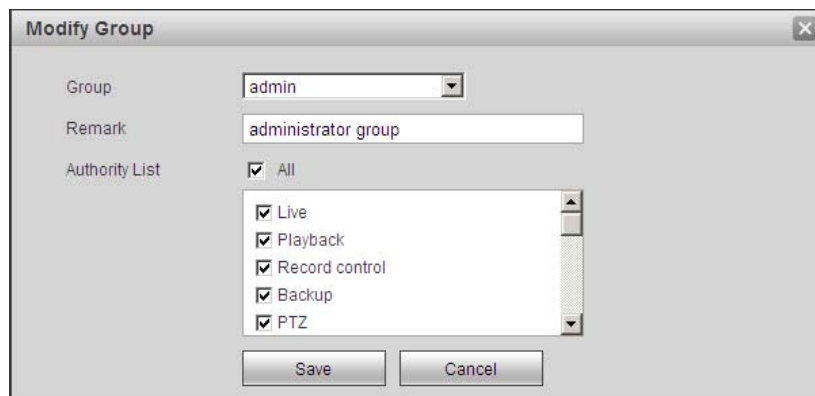
The 'Add Group' dialog box contains the following fields and controls:

- Group:** A text input field.
- Remark:** A text input field.
- Authority List:** A list of permissions with checkboxes:
  - ☐ All
  - ☐ Live
  - ☐ Playback
  - ☐ Record control
  - ☐ Backup
  - ☐ PTZ
- Buttons:** 'Save' and 'Cancel' buttons at the bottom.

Figure 2-49

### Modify group

Click the modify group button, you can see an interface is shown as in Figure 2-50. Here you can modify group information such as remarks and rights.



The 'Modify Group' dialog box contains the following fields and controls:

- Group:** A dropdown menu showing 'admin'.
- Remark:** A text input field containing 'administrator group'.
- Authority List:** A list of permissions with checkboxes:
  - ☒ All
  - ☒ Live
  - ☒ Playback
  - ☒ Record control
  - ☒ Backup
  - ☒ PTZ
- Buttons:** 'Save' and 'Cancel' buttons at the bottom.

Figure 2-50

## 2.6.3 PTZ

The PTZ interface includes two interfaces.

### 2.6.3.1 Network PTZ

The network PTZ interface is shown as in Figure 2-51.



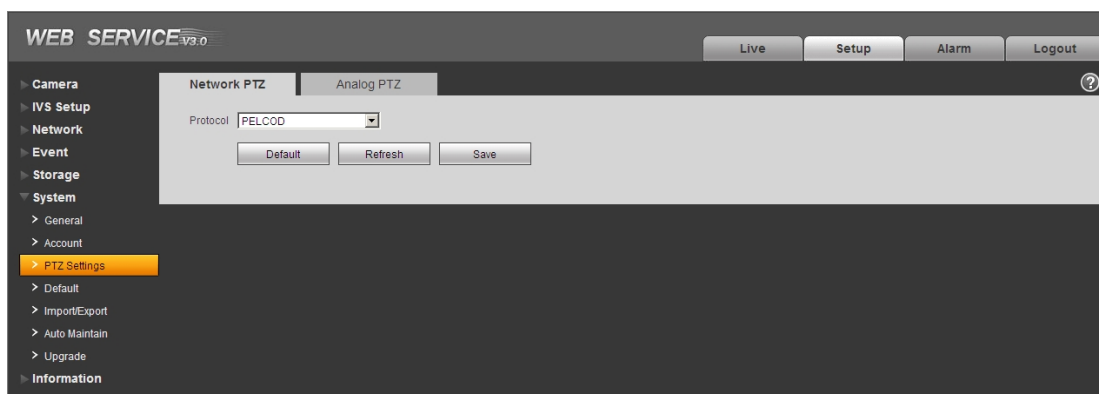


Figure 2-51

Please refer to the following sheet for detailed information.

Parameter	Function
Protocol	Select the corresponding dome protocol.

### 2.6.3.2 Analog PTZ Setting

The analog PTZ setting interface is shown as in Figure 2-52.

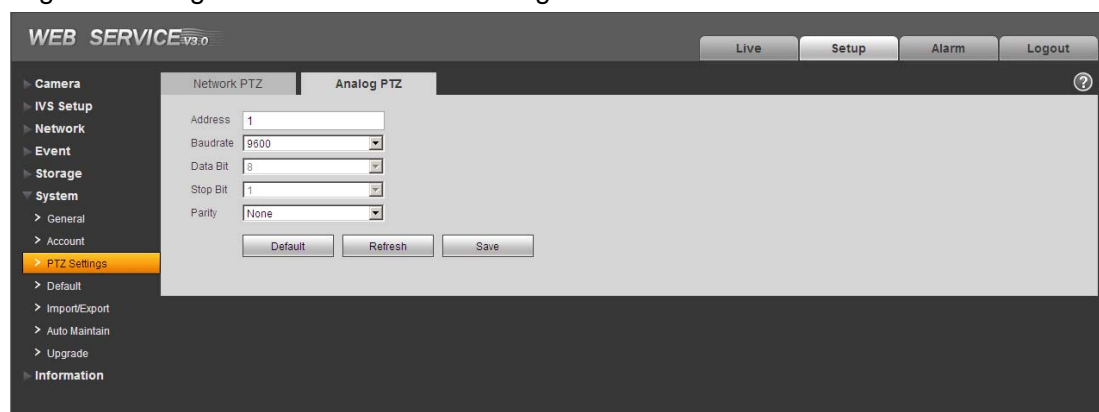


Figure 2-52

Please refer to the following sheet for detailed information.

Parameter	Function
Address	Set the software address you can control the device via the RS485 BUS. Default value is 1.
Baud Rate	Set the baud rate you can control the device via the RS485 BUS. Default setup is 9600.
Data Bit	Display data bit value.
Stop bit	Display stop bit value.

Parameter	Function
Parity	Set the parity you can control the device via the RS485 BUS.

### 2.6.4 Default

The default setup interface is shown as in Figure 2-53.

Please note system can not restore some information such as network IP address.

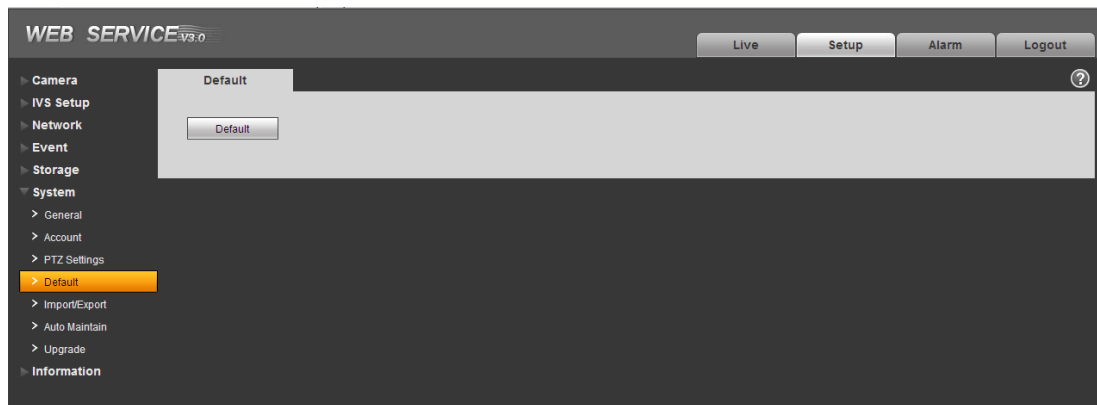


Figure 2-53

### 2.6.5 Import/Export

The interface is shown as in Figure 2-54.

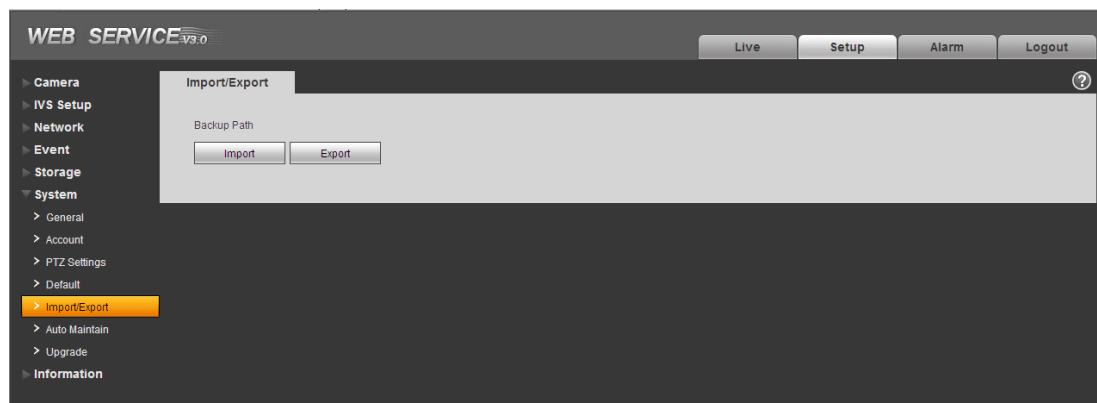


Figure 2-54

Please refer to the following sheet for detailed information.

Parameter	Function
Import	It is to import the local setup files to the system.
Export	It is to export the corresponding system setup to your local PC.

### 2.6.6 Auto maintenance

The auto maintenance interface is shown as in Figure 2-55.

Here you can select auto reboot and auto delete old files interval from the dropdown list.

If you want to use the auto delete old files function, you need to set the file period.

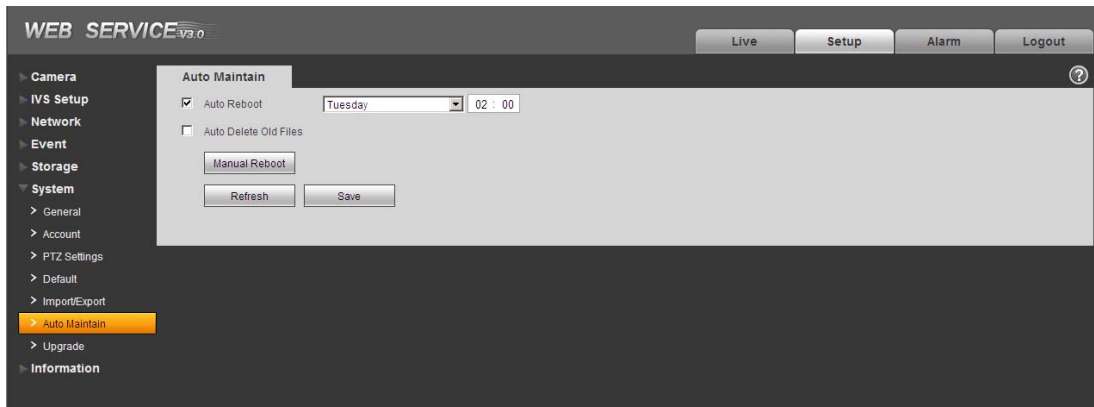


Figure 2-55

### 2.6.7 Firmware update

The firmware interface is shown as in Figure 2-56.

Please select the upgrade file and then click the update button to begin firmware update.

#### **Important**

**Do not turn off the device power, disconnect the device, reboot or shutdown the device during the update period.**

**Please reboot the device if you update the improper program, otherwise some function module of the device may become null!**

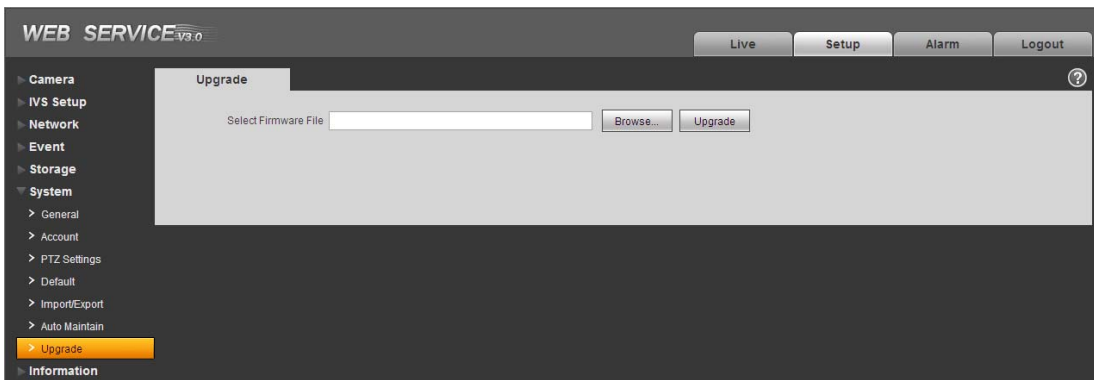


Figure 2-56

## 2.7 Information

### 2.7.1 Version

The version interface is shown as in Figure 2-57.

Here you can view system software version, WEB version, release date and etc. Please note the following information is for reference only.

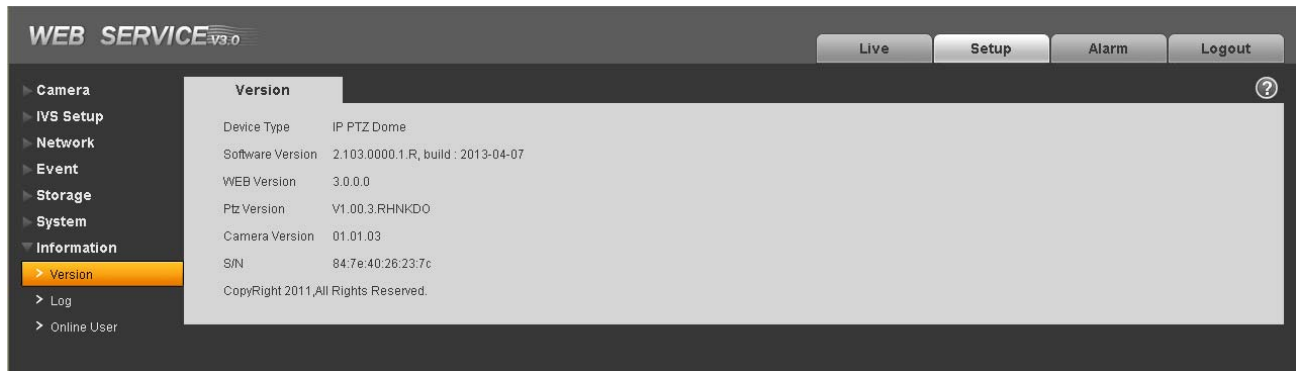


Figure 2-57

### 2.7.2 Log

Here you can view system log. See Figure 2-58.

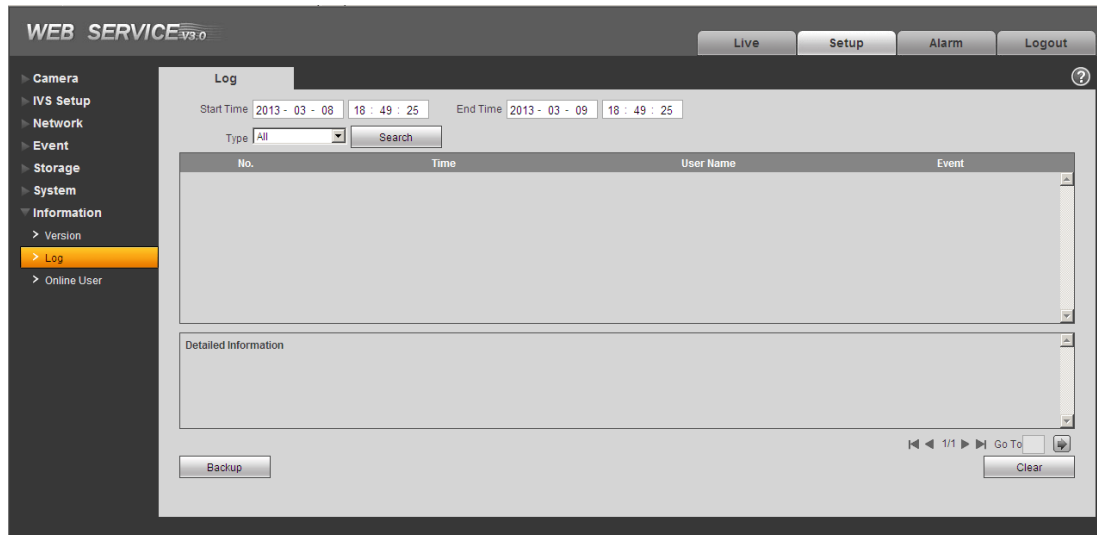


Figure 2-58

Please refer to the following sheet for log parameter information.

Parameter	Function
Type	Log types include: system operation, configuration operation, data operation, alarm event, record operation, and user management, log clear.
Start time	Set the start time of the requested log.

Parameter	Function
End time	Set the end time of the requested log.
Search	You can select log type from the drop down list and then click search button to view the list. You can click the stop button to terminate current search operation.
Detailed information	You can select one item to view the detailed information.
Clear	You can click this button to delete all displayed log files.
Backup	You can click this button to backup log files to current PC.

### 2.7.3 Online User

The online user interface is shown as in Figure 2-59.

Here you can view online user name, group name, IP address and login time.

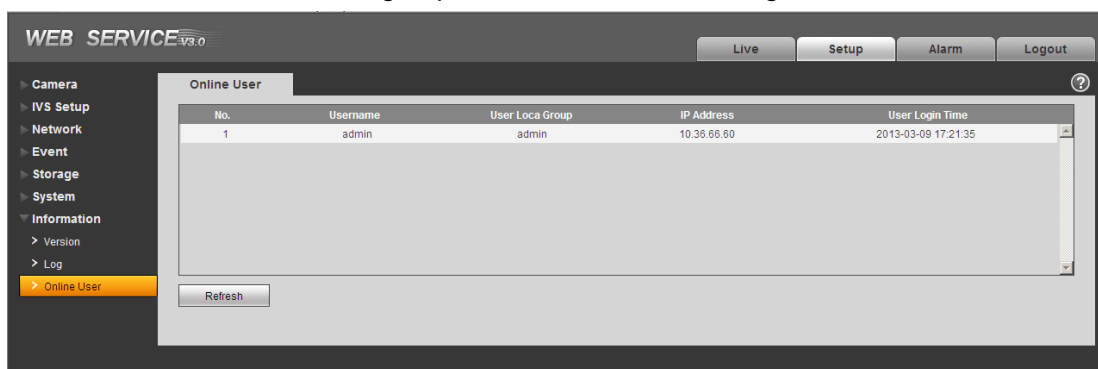


Figure 2-59

### 3 Alarm

Click alarm function, you can see an interface is shown as in Figure 3-1.

Here you can set device alarm type and alarm sound setup. When the specified alarm occurred (you have subscribed), system can record the corresponding alarm information on the right pane of the alarm list.

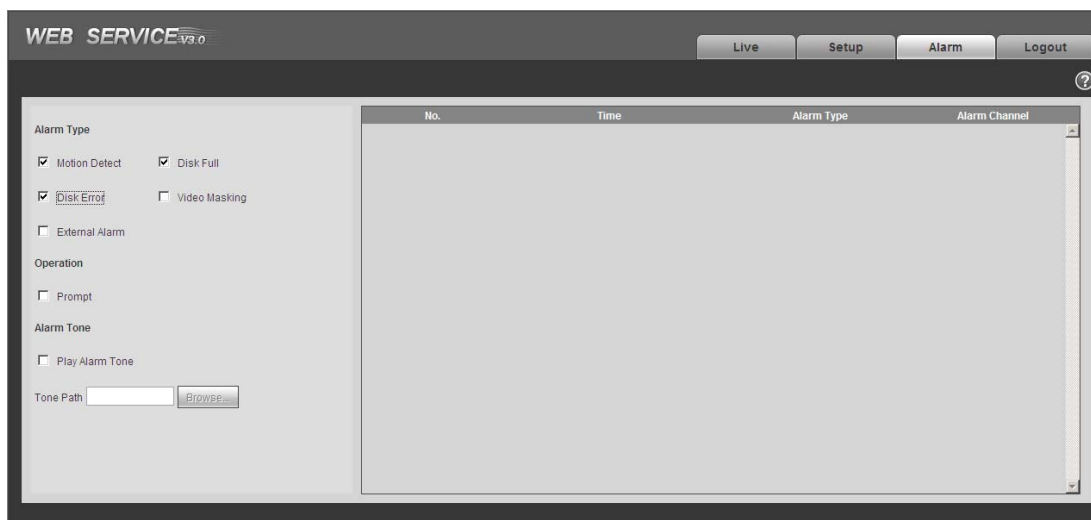


Figure 3-1

Please refer to the following sheet for detailed information.

Type	Parameter	Function
Alarm type	Motion detect	System alarms when motion detection alarm occurs,
	Disk full	System alarms when disk is full.
	HDD malfunction	System generates an alarm when HDD is malfunction.
	Camera masking	System alarms when camera is viciously masking.
	External alarm	Alarm input device sends out alarm.
Operation	Prompt	System automatically pops up alarm dialogue box.
Alarm audio	Audio	When alarm occurs, system auto generates alarm audio. The audio supports customized setup.
	Path	Here you can specify alarm sound file.

## 4 Log out

Click log out button, system goes back to log in interface. See Figure 4-1.

You need to input user name and password to login again.

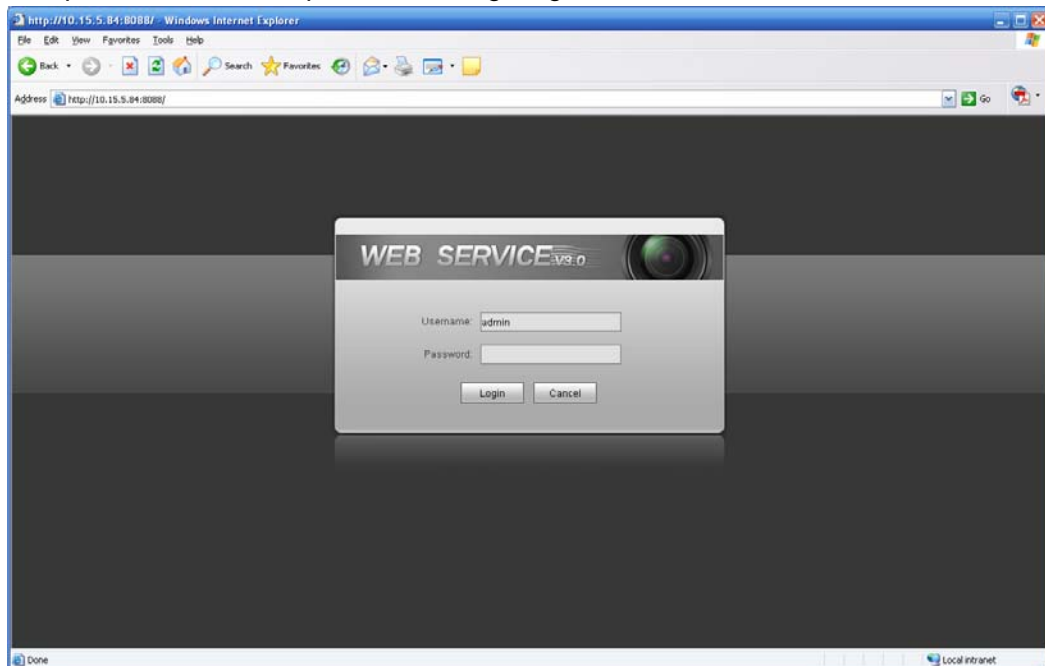


Figure 4-1

### Note:

- This manual is for reference only. Slight difference may be found in user interface.
- All the designs and software here are subject to change without prior written notice.
- All trademarks and registered trademarks are the properties of their respective owners.
- If there is any uncertainty or controversy, please refer to the final explanation of us.
- Please visit our website for more information.